

Figure 1 Updating red spruce growth trends

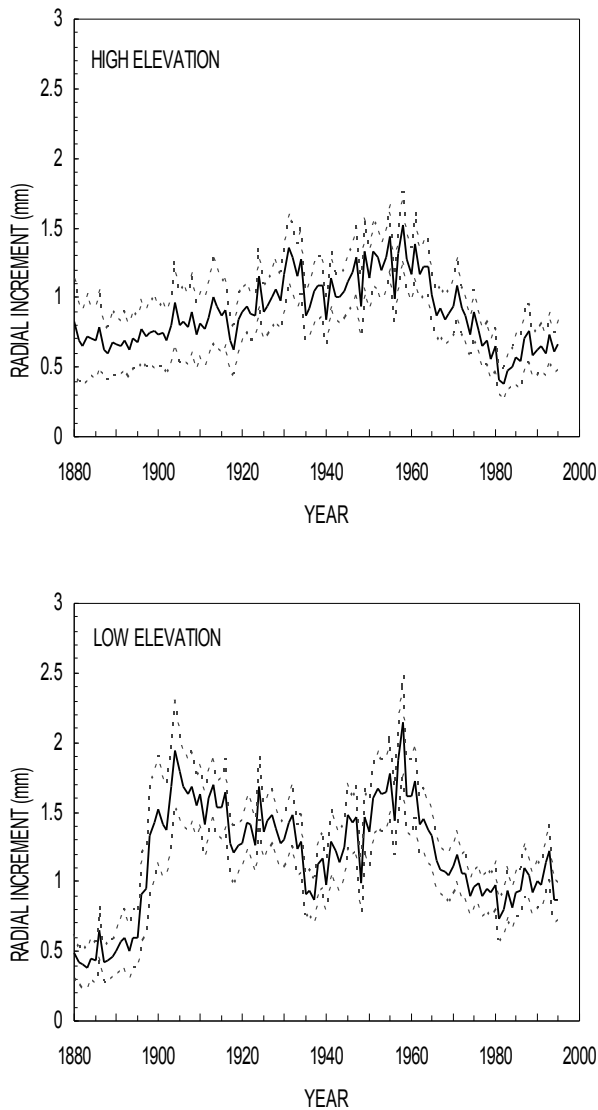


Figure 1: Mean annual radial growth of red spruce. Trees are from high (N=38) and low (N=45) elevations on Mt. Mansfield (VT), Mt. Washington (NH), and Whiteface Mt. (NY). Dashed lines indicate 95% confidence interval (+/- 2 standard errors of the mean). Only trees >70 years old were used in the analyses; sample size prior to 1925 is variable.

Figure 2

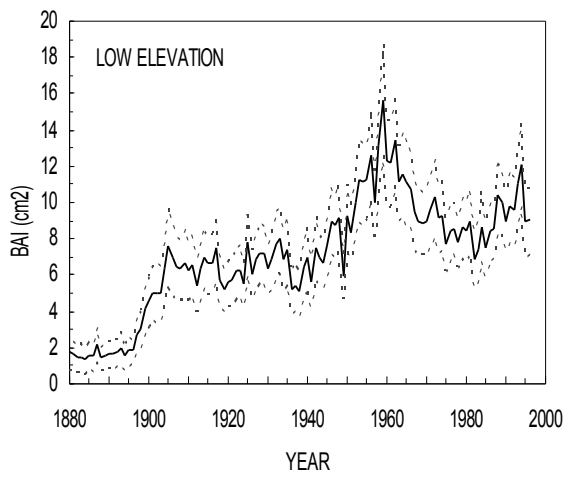
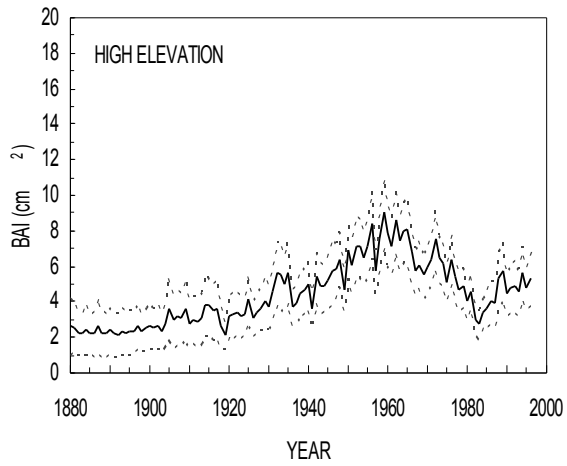


Figure 2. Mean annual basal area increment of red spruce. Details as in Figure 1.

Figure 2: Table Data

	1999	1998	1997	1996	1995	1994	1993	1992	1991	1990	1989	1988
high MEAN BAI					5.31	4.83	5.64	4.6	4.92	4.74	4.45	5.74
high N=					37	37	37	38	38	38	38	38
SE OF MEAN					0.76	0.59	0.74	0.64	0.74	0.66	0.6	0.8
2 x SE					1.51	1.17	1.47	1.27	1.49	1.31	1.21	1.6
UPPER LIMIT					6.83	6	7.11	5.87	6.4	6.05	5.66	7.34
LOWER LIMIT					3.8	3.65	4.16	3.32	3.43	3.42	3.25	4.14
LOW MEAN BAI					9.04	9	12.09	11.03	9.6	9.81	8.98	10.03
LOW N=					43	43	44	44	44	45	45	45
SE OF MEAN					0.91	0.93	1.15	1.07	0.93	0.98	0.82	0.89
2 x SE					1.81	1.86	2.3	2.15	1.85	1.97	1.63	1.77
UPPER LIMIT					10.85	10.86	14.39	13.17	11.45	11.77	10.61	11.81
LOWER LIMIT					7.23	7.13	9.79	8.88	7.75	7.84	7.35	8.26
	1987	1986	1985	1984	1983	1982	1981	1980	1979	1978	1977	1976
high MEAN BAI	5.27	3.92	4.05	3.66	3.42	2.75	2.94	4.62	4.01	4.87	4.64	5.4
high N=	38	38	38	38	38	38	38	38	38	38	38	38
SE OF MEAN	0.79	0.62	0.59	0.5	0.44	0.44	0.37	0.51	0.5	0.56	0.55	0.56
2 x SE	1.59	1.25	1.18	1	0.89	0.88	0.75	1.01	0.99	1.12	1.1	1.12
UPPER LIMIT	6.86	5.17	5.24	4.65	4.3	3.63	3.69	5.63	5	5.99	5.74	6.52
LOWER LIMIT	3.69	2.68	2.87	2.66	2.53	1.86	2.19	3.61	3.02	3.74	3.54	4.27
LOW MEAN BAI	10.37	8.58	8.49	7.47	8.67	7.41	6.86	8.94	8.45	8.68	7.78	8.57
LOW N=	45	45	45	45	45	45	45	45	45	45	45	45
SE OF MEAN	1.01	0.77	0.82	0.76	0.95	0.83	0.78	0.88	0.87	0.87	0.67	0.71
2 x SE	2.03	1.55	1.64	1.52	1.91	1.65	1.57	1.77	1.73	1.74	1.34	1.41
UPPER LIMIT	12.4	10.13	10.13	8.99	10.58	9.06	8.43	10.71	10.18	10.42	9.12	9.98
LOWER LIMIT	8.35	7.03	6.84	5.95	6.76	5.75	5.29	7.18	6.72	6.95	6.44	7.16
	1975	1974	1973	1972	1971	1970	1969	1968	1967	1966	1965	1964
high MEAN BAI	6.34	5.12	6.14	6.45	7.52	6.39	5.92	5.56	6.11	5.73	6.76	8.07
high N=	38	38	38	38	38	38	38	38	38	38	38	38
SE OF MEAN	0.69	0.53	0.63	0.68	0.82	0.71	0.66	0.65	0.69	0.65	0.8	0.93
2 x SE	1.37	1.06	1.27	1.36	1.65	1.41	1.33	1.29	1.38	1.3	1.6	1.86
UPPER LIMIT	7.71	6.18	7.4	7.8	9.17	7.8	7.25	6.86	7.49	7.03	8.36	9.93
LOWER LIMIT	4.97	4.06	4.87	5.09	5.88	4.98	4.59	4.27	4.74	4.43	5.15	6.21
LOW MEAN BAI	8.47	7.71	9.3	9.2	10.26	9.59	8.95	8.88	9	9.51	10.74	11.12
LOW N=	45	45	45	45	45	45	45	45	45	45	45	45
SE OF MEAN	0.78	0.74	0.97	0.93	1.06	1	0.94	0.85	0.88	0.96	1.06	1.18
2 x SE	1.56	1.49	1.94	1.86	2.12	2.01	1.87	1.7	1.76	1.93	2.12	2.37
UPPER LIMIT	10.04	9.2	11.24	11.06	12.38	11.59	10.82	10.58	10.76	11.43	12.86	13.49
LOWER LIMIT	6.91	6.23	7.35	7.34	8.14	7.58	7.07	7.17	7.24	7.58	8.62	8.75

Sheet1

	1963	1962	1961	1960	1959	1958	1957	1956	1955	1954	1953	1952
high MEAN BAI	7.94	7.44	8.64	7.18	7.83	9.01	7.55	5.72	8.37	7.09	6.52	7.09
high N=	38	38	38	38	38	38	38	38	38	38	38	38
SE OF MEAN	0.85	0.77	0.91	0.78	0.9	0.96	0.78	0.61	0.95	0.77	0.72	0.82
2 x SE	1.7	1.55	1.82	1.55	1.8	1.92	1.55	1.21	1.89	1.54	1.44	1.65
UPPER LIMIT	9.63	8.99	10.46	8.73	9.63	10.93	9.1	6.93	10.26	8.63	7.96	8.74
LOWER LIMIT	6.24	5.89	6.82	5.63	6.04	7.09	6	4.51	6.47	5.56	5.08	5.45
LOW MEAN BAI	11.55	11.12	13.41	12.19	12.25	15.67	13.18	9.96	12.64	11.21	11.13	11.25
LOW N=	45	45	45	45	45	45	45	45	45	45	45	45
SE OF MEAN	1.14	1.03	1.26	1.2	1.19	1.54	1.22	0.93	1.23	1.03	1.12	1.16
2 x SE	2.27	2.05	2.51	2.41	2.39	3.07	2.44	1.86	2.46	2.07	2.23	2.33
UPPER LIMIT	13.82	13.18	15.92	14.6	14.63	18.75	15.62	11.82	15.11	13.28	13.36	13.58
LOWER LIMIT	9.28	9.07	10.89	9.79	9.86	12.6	10.73	8.1	10.18	9.15	8.9	8.92
	1951	1950	1949	1948	1947	1946	1945	1944	1943	1942	1941	1940
high MEAN BAI	7.1	6.1	6.88	4.67	6.42	5.85	5.73	5.22	4.86	4.87	5.38	3.67
high N=	38	38	38	38	38	38	38	38	38	38	38	38
SE OF MEAN	0.85	0.76	0.8	0.59	0.76	0.73	0.9	0.76	0.66	0.71	0.73	0.46
2 x SE	1.7	1.52	1.59	1.17	1.52	1.46	1.79	1.53	1.32	1.43	1.47	0.91
UPPER LIMIT	8.8	7.63	8.47	5.84	7.94	7.31	7.53	6.75	6.17	6.3	6.85	4.58
LOWER LIMIT	5.4	4.58	5.29	3.5	4.9	4.39	3.94	3.69	3.54	3.44	3.91	2.75
LOW MEAN BAI	9.98	8.37	9.26	5.93	9.19	8.74	8.96	7.57	6.66	6.98	7.53	5.62
LOW N=	45	45	45	45	45	45	45	45	45	45	45	45
SE OF MEAN	0.87	0.75	0.88	0.61	0.93	0.84	0.91	0.81	0.7	0.73	0.86	0.66
2 x SE	1.74	1.49	1.75	1.23	1.85	1.67	1.82	1.63	1.39	1.47	1.72	1.31
UPPER LIMIT	11.72	9.86	11.01	7.16	11.04	10.41	10.78	9.19	8.05	8.45	9.25	6.93
LOWER LIMIT	8.23	6.87	7.5	4.7	7.34	7.06	7.15	5.94	5.27	5.51	5.81	4.31
	1939	1938	1937	1936	1935	1934	1933	1932	1931	1930	1929	1928
high MEAN BAI	4.95	4.72	4.5	3.92	3.72	5.59	5.01	5.51	5.65	4.57	3.77	3.99
high N=	38	38	38	38	38	38	38	38	38	38	38	38
SE OF MEAN	0.68	0.65	0.62	0.54	0.54	0.85	0.8	0.89	0.92	0.72	0.61	0.71
2 x SE	1.36	1.31	1.25	1.07	1.08	1.7	1.59	1.79	1.84	1.44	1.22	1.42
UPPER LIMIT	6.3	6.03	5.75	4.99	4.8	7.29	6.6	7.3	7.5	6	4.99	5.41
LOWER LIMIT	3.59	3.42	3.25	2.85	2.65	3.88	3.42	3.72	3.81	3.13	2.55	2.57
LOW MEAN BAI	6.97	6.47	5.06	5.37	5.18	7.4	6.85	7.98	7.71	6.83	6.34	7.14
LOW N=	45	45	45	45	45	45	45	45	45	45	45	45
SE OF MEAN	0.85	0.77	0.66	0.66	0.63	0.92	0.83	0.93	0.94	0.8	0.69	0.83
2 x SE	1.71	1.55	1.33	1.31	1.27	1.84	1.66	1.86	1.88	1.61	1.38	1.66
UPPER LIMIT	8.68	8.02	6.39	6.69	6.45	9.24	8.51	9.84	9.6	8.44	7.72	8.8
LOWER LIMIT	5.27	4.93	3.73	4.06	3.91	5.56	5.19	6.12	5.83	5.22	4.96	5.48
	1927	1926	1925	1924	1923	1922	1921	1920	1919	1918	1917	1916
high MEAN BAI	3.66	3.39	3.12	4.2	3.25	3.21	3.36	3.31	3.24	2.14	2.7	3.64
high N=	38	38	38	38	38	38	37	36	35	35	35	34
SE OF MEAN	0.59	0.55	0.49	0.66	0.56	0.62	0.59	0.62	0.62	0.39	0.64	0.82
2 x SE	1.19	1.09	0.99	1.32	1.11	1.23	1.19	1.24	1.24	0.78	1.27	1.64

Sheet1

UPPER LIMIT	4.85	4.48	4.11	5.52	4.36	4.44	4.55	4.55	4.48	2.91	3.98	5.28
LOWER LIMIT	2.47	2.29	2.13	2.88	2.14	1.97	2.17	2.06	2	1.36	1.43	2
LOW MEAN BAI	7.24	6.9	6.05	7.8	5.49	6.24	6.2	5.69	5.63	5.18	5.74	7.47
LOW N=	45	45	45	43	43	42	42	41	40	39	37	37
SE OF MEAN	0.82	0.79	0.68	0.88	0.6	0.71	0.69	0.65	0.64	0.58	0.71	0.92
2 x SE	1.64	1.58	1.36	1.76	1.2	1.42	1.38	1.3	1.28	1.15	1.41	1.85
UPPER LIMIT	8.88	8.48	7.41	9.56	6.68	7.66	7.58	6.99	6.91	6.33	7.15	9.31
LOWER LIMIT	5.6	5.31	4.69	6.05	4.29	4.82	4.82	4.39	4.35	4.02	4.33	5.62

	1915	1914	1913	1912	1911	1910	1909	1908	1907	1906	1905	1904
high MEAN BAI	3.53	3.78	3.81	3.13	2.91	3.03	2.78	3.58	3.08	3.18	2.97	3.63
high N=	34	33	33	33	33	33	32	31	31	31	31	31
SE OF MEAN	0.81	0.85	0.85	0.7	0.7	0.66	0.67	0.85	0.73	0.78	0.74	0.88
2 x SE	1.62	1.69	1.71	1.4	1.4	1.31	1.33	1.7	1.45	1.55	1.48	1.76
UPPER LIMIT	5.15	5.48	5.52	4.53	4.32	4.34	4.11	5.28	4.53	4.73	4.45	5.39
LOWER LIMIT	1.9	2.09	2.11	1.73	1.51	1.71	1.44	1.88	1.63	1.63	1.5	1.86
LOW MEAN BAI	6.69	6.62	7	6.36	5.46	6.55	6.29	6.68	6.36	6.46	6.97	7.55
LOW N=	37	37	37	37	37	36	34	34	33	32	31	31
SE OF MEAN	0.8	0.82	0.82	0.77	0.76	0.85	0.82	0.92	0.82	0.87	1	1.06
2 x SE	1.6	1.64	1.65	1.54	1.52	1.7	1.64	1.84	1.64	1.74	2	2.11
UPPER LIMIT	8.3	8.26	8.65	7.9	6.98	8.25	7.92	8.52	8	8.2	8.97	9.67
LOWER LIMIT	5.09	4.99	5.35	4.83	3.94	4.85	4.65	4.84	4.72	4.72	4.98	5.44

	1903	1902	1901	1900	1899	1898	1897	1896	1895	1894	1893	1892
high MEAN BAI	2.74	2.35	2.64	2.58	2.65	2.53	2.35	2.63	2.34	2.37	2.25	2.39
high N=	31	31	30	29	28	28	28	28	27	27	26	26
SE OF MEAN	0.58	0.53	0.63	0.59	0.63	0.6	0.52	0.63	0.6	0.64	0.64	0.65
2 x SE	1.17	1.06	1.26	1.18	1.25	1.21	1.05	1.27	1.2	1.28	1.29	1.31
UPPER LIMIT	3.9	3.42	3.9	3.76	3.9	3.74	3.4	3.89	3.54	3.65	3.54	3.69
LOWER LIMIT	1.57	1.29	1.38	1.4	1.4	1.32	1.3	1.36	1.14	1.08	0.96	1.08
LOW MEAN BAI	6.32	5.03	5.05	5.05	4.57	4.13	2.98	2.75	1.84	1.87	1.6	1.99
LOW N=	31	31	31	31	30	28	28	28	28	28	28	28
SE OF MEAN	0.86	0.74	0.82	0.76	0.69	0.64	0.52	0.5	0.36	0.39	0.36	0.48
2 x SE	1.71	1.49	1.63	1.52	1.38	1.28	1.04	1	0.71	0.78	0.73	0.97
UPPER LIMIT	8.04	6.52	6.68	6.57	5.95	5.41	4.02	3.75	2.55	2.65	2.33	2.96
LOWER LIMIT	4.61	3.54	3.42	3.53	3.2	2.84	1.94	1.74	1.12	1.08	0.87	1.02

Sheet1

	1891	1890	1889	1888	1887	1886	1885	1884	1883	1882	1881	1880
high MEAN BAI	2.18	2.23	2.4	2.23	2.21	2.71	2.23	2.25	2.46	2.18	2.27	2.59
high N=	26	26	22	21	21	20	20	20	19	19	19	19
SE OF MEAN	0.59	0.61	0.65	0.61	0.63	0.79	0.64	0.59	0.71	0.62	0.62	0.72
2 x SE	1.18	1.22	1.29	1.23	1.25	1.58	1.28	1.17	1.43	1.23	1.24	1.43
UPPER LIMIT	3.36	3.45	3.69	3.45	3.47	4.28	3.51	3.42	3.89	3.41	3.51	4.02
LOWER LIMIT	1	1.01	1.1	1	0.96	1.13	0.95	1.08	1.03	0.95	1.03	1.16
LOW MEAN BAI	1.78	1.67	1.65	1.55	1.45	2.19	1.52	1.59	1.36	1.49	1.47	1.66
LOW N=	28	27	25	25	25	25	25	25	25	25	25	25
SE OF MEAN	0.38	0.39	0.38	0.37	0.32	0.46	0.38	0.4	0.36	0.41	0.35	0.39
2 x SE	0.76	0.78	0.75	0.75	0.65	0.93	0.77	0.79	0.72	0.81	0.7	0.79
UPPER LIMIT	2.54	2.45	2.41	2.3	2.09	3.12	2.29	2.39	2.08	2.3	2.17	2.45
LOWER LIMIT	1.01	0.89	0.9	0.8	0.8	1.26	0.75	0.8	0.64	0.67	0.77	0.87
	1879	1878	1877	1876	1875	1874	1873	1872	1871	1870	1869	1868
high MEAN BAI	2.67	2.18	1.89	1.98	2.65	2.35	2.02	2	2.16	2.31	1.83	1.82
high N=	18	18	18	17	17	17	17	17	16	16	12	12
SE OF MEAN	0.8	0.68	0.6	0.47	0.78	0.7	0.63	0.51	0.57	0.66	0.62	0.56
2 x SE	1.61	1.36	1.19	0.94	1.57	1.4	1.26	1.03	1.15	1.31	1.23	1.12
UPPER LIMIT	4.28	3.54	3.08	2.92	4.21	3.75	3.28	3.02	3.31	3.63	3.07	2.94
LOWER LIMIT	1.06	0.82	0.7	1.04	1.08	0.95	0.76	0.97	1.01	1	0.6	0.7
LOW MEAN BAI	1.78	1.89	1.77	1.66	2.2	2.12	1.86	1.84	2.33	2.56	2.17	2.25
LOW N=	23	23	23	23	22	22	22	22	21	21	17	17
SE OF MEAN	0.45	0.43	0.41	0.32	0.48	0.49	0.41	0.37	0.46	0.51	0.39	0.42
2 x SE	0.91	0.86	0.82	0.64	0.95	0.97	0.83	0.74	0.92	1.01	0.78	0.83
UPPER LIMIT	2.69	2.75	2.59	2.3	3.16	3.09	2.69	2.59	3.25	3.57	2.95	3.08
LOWER LIMIT	0.88	1.04	0.95	1.02	1.25	1.14	1.04	1.1	1.41	1.55	1.39	1.41
	1867	1866	1865	1864	1863	1862	1861	1860	1859	1858	1857	1856
high MEAN BAI	2.38	2	1.87	2.24	2.12	2.25	2.1	1.6	1.85	1.83	1.72	2.1
high N=	11	11	11	11	11	11	11	11	10	10	10	10
SE OF MEAN	0.64	0.59	0.55	0.6	0.61	0.65	0.58	0.35	0.56	0.47	0.43	0.59
2 x SE	1.29	1.17	1.1	1.2	1.21	1.3	1.16	0.69	1.11	0.94	0.87	1.17
UPPER LIMIT	3.67	3.17	2.97	3.44	3.33	3.55	3.26	2.29	2.97	2.78	2.58	3.27
LOWER LIMIT	1.09	0.83	0.77	1.03	0.91	0.95	0.95	0.91	0.74	0.89	0.85	0.92
LOW MEAN BAI	2.34	2.08	1.99	2.26	2.29	2.26	2.05	2.04	2.01	2	1.58	1.65
LOW N=	17	17	17	17	17	17	17	17	15	15	14	13
SE OF MEAN	0.48	0.48	0.44	0.56	0.56	0.5	0.46	0.5	0.51	0.53	0.45	0.45
2 x SE	0.96	0.97	0.87	1.12	1.13	0.99	0.93	1	1.02	1.06	0.89	0.9
UPPER LIMIT	3.31	3.05	2.86	3.38	3.42	3.26	2.98	3.04	3.03	3.05	2.47	2.55
LOWER LIMIT	1.38	1.12	1.11	1.14	1.16	1.27	1.13	1.03	1	0.94	0.68	0.75

Sheet1

	1855	1854	1853	1852	1851	1850	1849	1848	1847	1846	1845	1844
high MEAN BAI	1.97	1.48	1.9	1.89	1.85	1.77	1.49	1.93	1.94	1.82	1.72	0.99
high N=	10	10	9	9	9	9	8	8	8	8	8	8
SE OF MEAN	0.68	0.46	0.62	0.57	0.6	0.58	0.44	0.59	0.71	0.59	0.52	0.29
2 x SE	1.36	0.91	1.24	1.14	1.2	1.17	0.87	1.19	1.42	1.18	1.04	0.57
UPPER LIMIT	3.32	2.39	3.14	3.03	3.05	2.94	2.36	3.12	3.36	3	2.76	1.56
LOWER LIMIT	0.61	0.57	0.66	0.74	0.64	0.6	0.62	0.74	0.52	0.64	0.68	0.41
LOW MEAN BAI	1.42	1.19	1.11	0.97	1.32	1.16	1.29	1.65	1.27	1.29	1.2	0.66
LOW N=	13	13	12	12	12	12	9	9	9	9	9	9
SE OF MEAN	0.42	0.34	0.38	0.33	0.53	0.52	0.73	1.03	0.74	0.76	0.7	0.37
2 x SE	0.85	0.67	0.76	0.67	1.06	1.04	1.46	2.06	1.48	1.51	1.41	0.74
UPPER LIMIT	2.27	1.86	1.86	1.64	2.38	2.2	2.75	3.72	2.74	2.8	2.6	1.4
LOWER LIMIT	0.57	0.52	0.35	0.3	0.26	0.12	-0.17	-0.41	-0.21	-0.22	-0.21	-0.07
	1843	1842	1841	1840	1839	1838	1837	1836	1835	1834	1833	1832
high MEAN BAI	1.37	1.41	1.43	1.78	1.49	1.71	2.05	2.36	1.98	2.46	2.58	2.25
high N=	8	8	8	8	6	6	6	6	6	6	5	5
SE OF MEAN	0.42	0.42	0.42	0.5	0.46	0.53	0.59	0.63	0.56	0.68	0.56	0.45
2 x SE	0.85	0.84	0.83	1	0.91	1.06	1.18	1.26	1.13	1.35	1.12	0.9
UPPER LIMIT	2.21	2.26	2.26	2.78	2.41	2.77	3.24	3.63	3.11	3.82	3.7	3.15
LOWER LIMIT	0.52	0.57	0.6	0.77	0.58	0.66	0.87	1.1	0.85	1.11	1.46	1.35
LOW MEAN BAI	0.9	1.01	0.99	1.26	1.2	1.31	1.36	1.6	1.5	1.65	1.43	1.33
LOW N=	9	8	8	8	6	6	6	6	6	6	6	6
SE OF MEAN	0.47	0.57	0.52	0.59	0.7	0.78	0.77	0.89	0.8	0.79	0.82	0.8
2 x SE	0.95	1.14	1.03	1.18	1.4	1.56	1.53	1.77	1.6	1.58	1.64	1.59
UPPER LIMIT	1.85	2.15	2.02	2.45	2.59	2.87	2.89	3.37	3.1	3.23	3.07	2.92
LOWER LIMIT	-0.05	-0.14	-0.05	0.08	-0.2	-0.25	-0.18	-0.17	-0.1	0.07	-0.2	-0.26
	1831	1830	1829	1828	1827	1826	1825	1824	1823	1822	1821	1820
high MEAN BAI	2.36	2.79	1.88	1.99	2.05	2.01	2.35	1.61	1.55	1.55	1.47	1.17
high N=	5	5	5	5	5	5	5	5	5	5	5	5
SE OF MEAN	0.57	0.56	0.47	0.5	0.56	0.52	0.58	0.34	0.35	0.31	0.39	0.26
2 x SE	1.14	1.11	0.94	1	1.11	1.04	1.16	0.68	0.7	0.62	0.77	0.52
UPPER LIMIT	3.5	3.9	2.82	2.98	3.16	3.05	3.51	2.29	2.25	2.17	2.25	1.69
LOWER LIMIT	1.22	1.68	0.94	0.99	0.94	0.97	1.18	0.93	0.85	0.92	0.7	0.65
LOW MEAN BAI	1.17	1.4	1.04	1.05	1.09	1.09	1.33	1.08	0.88	1.1	1.35	0.98
LOW N=	6	6	6	6	6	6	6	6	6	5	5	5
SE OF MEAN	0.58	0.69	0.58	0.58	0.57	0.64	0.74	0.64	0.48	0.53	0.73	0.53
2 x SE	1.15	1.39	1.15	1.15	1.14	1.28	1.49	1.29	0.97	1.06	1.46	1.06
UPPER LIMIT	2.32	2.78	2.19	2.2	2.23	2.37	2.82	2.37	1.85	2.16	2.81	2.03
LOWER LIMIT	0.02	0.01	-0.12	-0.11	-0.04	-0.19	-0.16	-0.21	-0.08	0.03	-0.11	-0.08

Sheet1

	1819	1818	1817	1816	1815	1814	1813	1812	1811	1810	1809	1808
high MEAN BAI	1.34	1.16	1.55	1.32	1.46	1.18	1.2	1	1.21	1.01	0.94	1.26
high N=	5	5	5	5	5	5	4	4	4	4	4	4
SE OF MEAN	0.29	0.22	0.56	0.36	0.5	0.56	0.52	0.45	0.39	0.33	0.33	0.4
2 x SE	0.58	0.44	1.11	0.73	0.99	1.13	1.03	0.9	0.78	0.67	0.67	0.8
UPPER LIMIT	1.92	1.6	2.66	2.05	2.45	2.31	2.24	1.89	1.99	1.67	1.61	2.06
LOWER LIMIT	0.75	0.72	0.44	0.59	0.47	0.06	0.17	0.1	0.44	0.34	0.28	0.46
LOW MEAN BAI	1.13	1.11	1.36	0.94	0.98	0.7	0.92	1.13	0.95	0.92	0.77	0.82
LOW N=	5	5	4	4	4	4	4	4	4	3	3	3
SE OF MEAN	0.68	0.61	0.58	0.4	0.39	0.32	0.28	0.32	0.18	0.1	0.13	0.13
2 x SE	1.37	1.23	1.16	0.81	0.78	0.64	0.55	0.64	0.37	0.2	0.25	0.27
UPPER LIMIT	2.5	2.33	2.52	1.75	1.76	1.34	1.47	1.77	1.32	1.12	1.02	1.09
LOWER LIMIT	-0.24	-0.12	0.2	0.13	0.19	0.06	0.37	0.49	0.58	0.72	0.52	0.55
	1807	1806	1805	1804	1803	1802	1801	1800	1799	1798	1797	1796
high MEAN BAI	1.98	1.36	1.23	1.25	1.61	1.18	1.4	1.63	1.19	1.04	0.94	0.96
high N=	4	4	4	4	4	4	4	4	4	4	4	4
SE OF MEAN	0.4	0.34	0.27	0.3	0.36	0.27	0.22	0.37	0.32	0.25	0.26	0.19
2 x SE	0.81	0.69	0.55	0.6	0.72	0.55	0.43	0.75	0.65	0.49	0.51	0.37
UPPER LIMIT	2.78	2.05	1.78	1.85	2.32	1.72	1.84	2.38	1.84	1.53	1.45	1.33
LOWER LIMIT	1.17	0.67	0.69	0.65	0.89	0.63	0.97	0.89	0.54	0.55	0.42	0.59
LOW MEAN BAI	0.94	0.55	0.84	0.66	0.84	0.69	0.81	0.77	0.64	0.77	0.94	0.68
LOW N=	3	2	2	2	2	2	2	2	2	2	2	2
SE OF MEAN	0.15	0.18	0.25	0.1	0.2	0.11	0.2	0.14	0.07	0.17	0.23	0.17
2 x SE	0.29	0.36	0.5	0.2	0.4	0.22	0.4	0.28	0.14	0.34	0.47	0.35
UPPER LIMIT	1.23	0.91	1.35	0.86	1.24	0.92	1.2	1.06	0.78	1.1	1.41	1.03
LOWER LIMIT	0.65	0.19	0.34	0.46	0.44	0.47	0.41	0.49	0.5	0.43	0.47	0.34
	1795	1794	1793	1792	1791	1790	1789	1788	1787	1786	1785	1784
high MEAN BAI	0.92	0.78	1.3	0.66	0.83	0.74	0.81	0.8	0.72	0.67	0.63	0.84
high N=	4	4	4	4	4	4	4	4	3	3	3	3
SE OF MEAN	0.18	0.21	0.34	0.2	0.23	0.25	0.25	0.24	0.25	0.21	0.17	0.42
2 x SE	0.35	0.42	0.69	0.41	0.46	0.49	0.5	0.48	0.49	0.43	0.33	0.84
UPPER LIMIT	1.27	1.2	1.98	1.07	1.29	1.23	1.31	1.28	1.21	1.1	0.97	1.68
LOWER LIMIT	0.57	0.35	0.61	0.26	0.37	0.25	0.31	0.32	0.23	0.24	0.3	0.01
LOW MEAN BAI	0.71	0.54	0.85	0.65	0.69	0.55	0.47	0.49	0.49	0.44	0.41	0.36
LOW N=	2	2	2	2	2	1	1	1	1	1	1	1
SE OF MEAN	0.31	0.27	0.32	0.25	0.25							
2 x SE	0.62	0.55	0.64	0.5	0.49							
UPPER LIMIT	1.33	1.09	1.5	1.15	1.19							
LOWER LIMIT	0.09	-0.01	0.21	0.15	0.2							

	1783	1782	1781	1780	1779	1778	1777	1776	1775 DIFF
high MEAN BAI	0.48	0.43	0.4	0.34	0.14	0.23	0.23	0.16	
high N=	3	3	3	3	3	1	1	1	
SE OF MEAN	0.24	0.25	0.27	0.26	0.07				
2 x SE	0.47	0.49	0.54	0.51	0.15				
UPPER LIMIT	0.95	0.92	0.94	0.85	0.28				
LOWER LIMIT	0	-0.06	-0.14	-0.17	-0.01				
LOW MEAN BAI	0.36	0.38	0.3	0.28					
LOW N=	1	1	1	1					
SE OF MEAN									
2 x SE									
UPPER LIMIT									
LOWER LIMIT									

Figure 3.

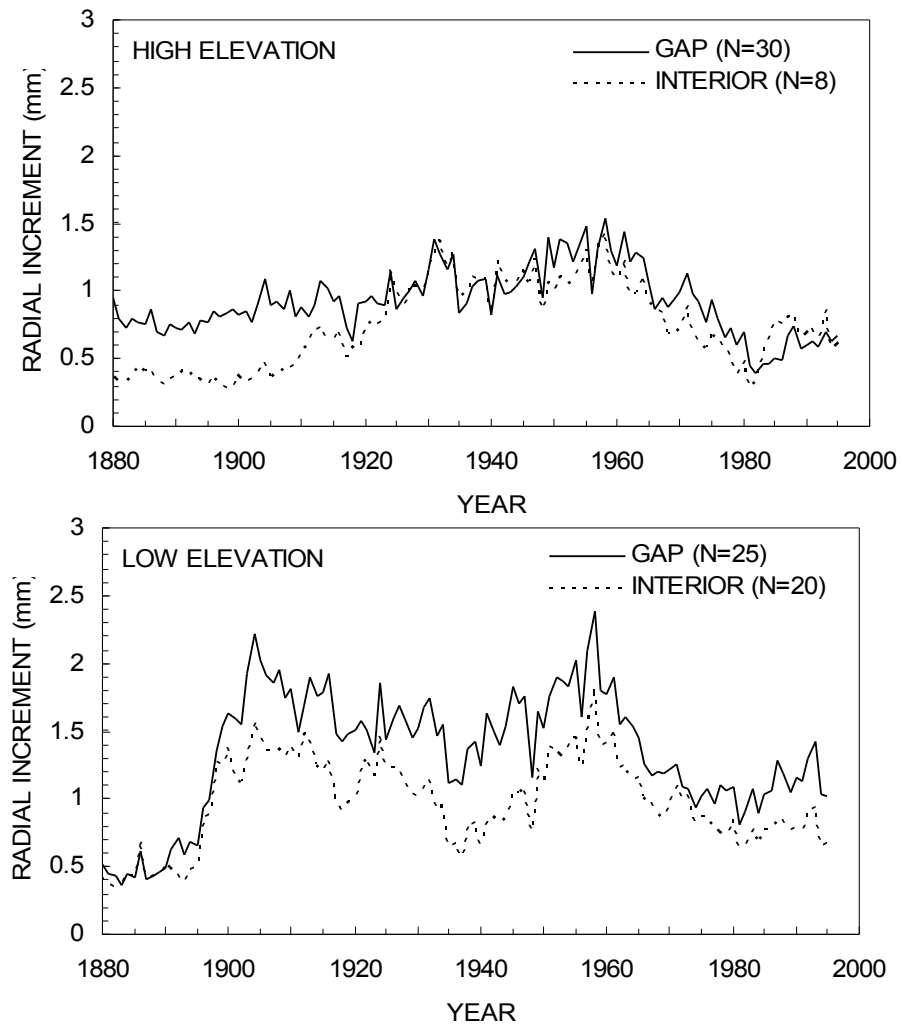


Figure 3. Mean annual radial growth of red spruce, stratified by crown exposure rating. See text for explanation of rating system. Other details as in Figure 1.

Figure 4.

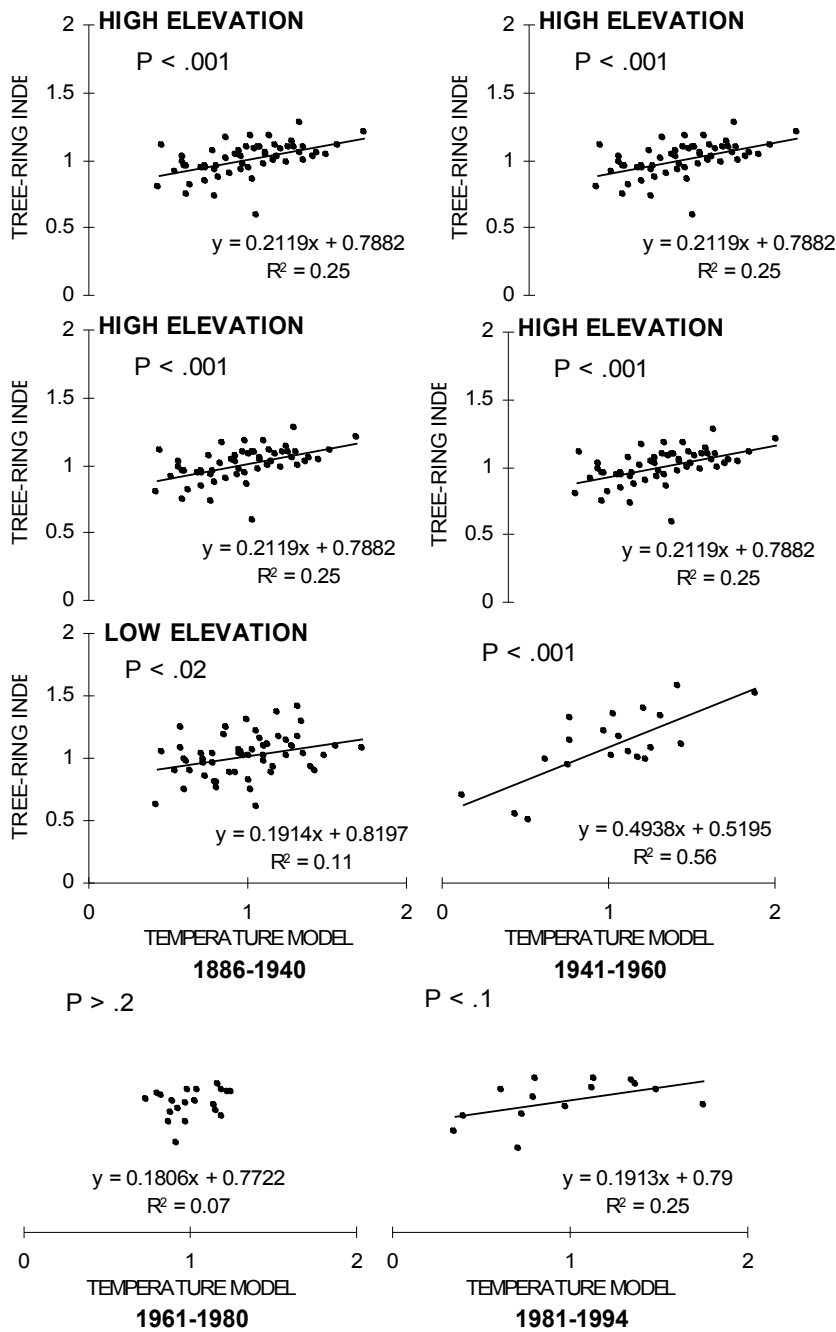


Figure 4. Regression of tree-ring indices and temperature model values over four verification periods. Tree-ring indices are first-differences of mean annual radial growth across all sites. Temperature model values are first-differences of values from a multiple linear regression equation developed by Cook (1987b), which is based on regional monthly mean temperatures. Tree-ring indices and temperature model values have been scaled to a mean of 1.0 by addition of a constant.

Figure 4. Table Data

TREE	1994	1993	1992	1991	1990	1989	1988	1987	1986	1985	1984
LOW MEAN	0.87	1.22	1.14	0.97	1	0.93	1.04	1.09	0.94	0.92	0.81
HIGH MEAN	0.62	0.73	0.6	0.65	0.62	0.59	0.76	0.71	0.54	0.57	0.51
FDIFFS											
LOW MEAN	-0.37	0.08	0.16	-0.04	0.08	-0.12	-0.05	0.16	0.01	0.11	-0.13
HIGH MEAN	-0.11	0.12	-0.05	0.03	0.04	-0.17	0.05	0.16	-0.02	0.06	0.03
SCALED MEANS											
LOW	0.62	1.07	1.15	0.95	1.06	0.87	0.93	1.14	1	1.1	0.86
HIGH	0.88	1.11	0.93	1.01	1.02	0.82	1.04	1.15	0.97	1.05	1.02
GROWTH PREDICTIONS	1994	1993	1992	1991	1990	1989	1988	1987	1986	1985	1984
GROWTH	1.09	1.38	1.26	1.45	0.7	1.08	1.35	1.38	1.24	1.44	1.07
FIRST DIFF	-0.29	0.12	-0.2	0.75	-0.38	-0.27	-0.03	0.14	-0.2	0.37	-0.6
SCALED PREDICTIONS	0.71	1.12	0.8	1.75	0.62	0.73	0.97	1.14	0.8	1.37	0.4
TREE	1983	1982	1981	1980	1979	1978	1977	1976	1975	1974	1973
LOW MEAN	0.94	0.8	0.74	0.98	0.92	0.95	0.89	0.99	0.96	0.89	1.06
HIGH MEAN	0.48	0.38	0.41	0.65	0.56	0.69	0.65	0.76	0.89	0.73	0.87
FDIFFS											
LOW MEAN	0.13	0.07	-0.24	0.06	-0.03	0.06	-0.1	0.03	0.07	-0.17	0
HIGH MEAN	0.1	-0.03	-0.24	0.08	-0.12	0.04	-0.12	-0.13	0.16	-0.13	-0.05
SCALED MEANS											
LOW	1.12	1.05	0.74	1.05	0.95	1.05	0.89	1.01	1.05	0.82	0.99
HIGH	1.08	0.96	0.75	1.07	0.86	1.03	0.87	0.86	1.15	0.85	0.93
GROWTH PREDICTIONS	1983	1982	1981	1980	1979	1978	1977	1976	1975	1974	1973
GROWTH	1.66	1.31	0.81	1.47	1.22	1.24	1.01	1.12	1.29	1.09	1.12
FIRST DIFF	0.35	0.49	-0.65	0.25	-0.02	0.23	-0.11	-0.17	0.19	-0.02	-0.27
SCALED PREDICTIONS	1.35	1.49	0.35	1.25	0.98	1.23	0.89	0.83	1.19	0.98	0.73

Sheet1

TREE	1972	1971	1970	1969	1968	1967	1966	1965	1964	1963	1962
LOW MEAN	1.06	1.19	1.12	1.05	1.07	1.09	1.15	1.32	1.37	1.45	1.41
HIGH MEAN	0.92	1.09	0.94	0.88	0.84	0.92	0.87	1.02	1.22	1.22	1.17
FDIFFS											
LOW MEAN	-0.13	0.07	0.07	-0.02	-0.02	-0.07	-0.17	-0.04	-0.08	0.04	-0.32
HIGH MEAN	-0.16	0.15	0.06	0.04	-0.08	0.05	-0.15	-0.2	0	0.05	-0.22
SCALED MEANS											
LOW	0.86	1.06	1.06	0.97	0.96	0.92	0.82	0.94	0.91	1.02	0.67
HIGH	0.82	1.13	1.05	1.02	0.91	1.04	0.84	0.79	0.99	1.04	0.77
GROWTH PREDICTIONS	1972	1971	1970	1969	1968	1967	1966	1965	1964	1963	1962
GROWTH	1.38	1.19	1.2	1.15	1.26	1.22	1.3	1.42	1.28	1.11	1.31
FIRST DIFF	0.19	-0.01	0.05	-0.11	0.03	-0.07	-0.12	0.14	0.16	-0.2	-0.08
SCALED PREDICTIONS	1.19	0.99	1.05	0.89	1.03	0.93	0.88	1.14	1.16	0.8	0.92
TREE	1961	1960	1959	1958	1957	1956	1955	1954	1953	1952	1951
LOW MEAN	1.73	1.61	1.62	2.14	1.87	1.44	1.78	1.65	1.63	1.67	1.6
HIGH MEAN	1.39	1.16	1.27	1.52	1.32	0.99	1.45	1.29	1.19	1.29	1.33
FDIFFS											
LOW MEAN	0.12	-0.01	-0.52	0.27	0.43	-0.34	0.13	0.02	-0.04	0.07	0.25
HIGH MEAN	0.23	-0.11	-0.24	0.2	0.33	-0.45	0.15	0.1	-0.1	-0.04	0.19
SCALED MEANS											
LOW	1.1	0.98	0.47	1.26	1.41	0.65	1.12	1.01	0.95	1.05	1.23
HIGH	1.21	0.88	0.75	1.18	1.31	0.54	1.14	1.09	0.89	0.95	1.18
GROWTH PREDICTIONS	1961	1960	1959	1958	1957	1956	1955	1954	1953	1952	1951
GROWTH	1.39	1.22	1.1	1.57	1.54	0.65	1.53	1.55	1.29	1.26	1.49
FIRST DIFF	0.17	0.12	-0.47	0.04	0.88	-0.87	-0.02	0.26	0.03	-0.23	0.31
SCALED PREDICTIONS	1.17	1.12	0.53	1.04	1.88	0.13	0.98	1.26	1.03	0.77	1.31

Sheet1

TREE	1950	1949	1948	1947	1946	1945	1944	1943	1942	1941	1940
LOW MEAN	1.35	1.46	0.99	1.46	1.42	1.48	1.25	1.15	1.22	1.29	0.98
HIGH MEAN	1.14	1.33	0.93	1.29	1.18	1.11	1.04	1	1.01	1.14	0.84
FDIFFS											
LOW MEAN	-0.11	0.47	-0.48	0.04	-0.06	0.23	0.1	-0.07	-0.07	0.31	-0.18
HIGH MEAN	-0.19	0.4	-0.36	0.11	0.07	0.07	0.04	0	-0.14	0.31	-0.26
SCALED MEANS											
LOW	0.88	1.46	0.51	1.03	0.93	1.22	1.09	0.91	0.92	1.29	0.8
HIGH	0.8	1.39	0.63	1.1	1.06	1.06	1.03	0.98	0.85	1.29	0.73
GROWTH PREDICTIONS	1950	1949	1948	1947	1946	1945	1944	1943	1942	1941	1940
GROWTH	1.17	1.42	1	1.56	1.12	0.94	1.16	1.09	1.47	1.24	1.03
FIRST DIFF	-0.24	0.42	-0.56	0.44	0.18	-0.22	0.07	-0.37	0.23	0.21	-0.21
SCALED PREDICTIONS	0.76	1.42	0.44	1.44	1.18	0.78	1.07	0.63	1.23	1.21	0.79
TREE	1939	1938	1937	1936	1935	1934	1933	1932	1931	1930	1929
LOW MEAN	1.17	1.13	0.87	0.94	0.91	1.29	1.23	1.48	1.42	1.3	1.27
HIGH MEAN	1.09	1.08	1.05	0.93	0.87	1.27	1.16	1.29	1.36	1.17	0.98
FDIFFS											
LOW MEAN	0.04	0.26	-0.07	0.03	-0.37	0.06	-0.25	0.06	0.12	0.03	-0.11
HIGH MEAN	0.01	0.03	0.12	0.06	-0.41	0.12	-0.13	-0.07	0.19	0.19	-0.09
SCALED MEANS											
LOW	1.03	1.24	0.92	1.01	0.61	1.04	0.74	1.05	1.1	1.02	0.87
HIGH	1	1.02	1.11	1.05	0.58	1.1	0.85	0.92	1.18	1.18	0.9
GROWTH PREDICTIONS	1939	1938	1937	1936	1935	1934	1933	1932	1931	1930	1929
GROWTH	1.23	0.88	1.29	1.12	1.01	0.95	1.49	1.46	1.5	1.37	1.35
FIRST DIFF	0.35	-0.41	0.17	0.11	0.06	-0.53	0.03	-0.04	0.14	0.01	-0.11
SCALED PREDICTIONS	1.35	0.59	1.17	1.11	1.06	0.47	1.03	0.96	1.14	1.01	0.89

Sheet1

TREE	1928	1927	1926	1925	1924	1923	1922	1921	1920	1919	1918
LOW MEAN	1.38	1.48	1.44	1.36	1.68	1.26	1.41	1.42	1.28	1.26	1.21
HIGH MEAN	1.06	1.01	0.94	0.9	1.15	0.87	0.88	0.94	0.89	0.84	0.63
FDIFFS											
LOW MEAN	-0.1	0.05	0.07	-0.24	0.42	-0.11	-0.01	0.17	0.05	0.08	-0.04
HIGH MEAN	0.06	0.07	0.04	-0.25	0.28	0	-0.03	0.07	0.08	0.21	-0.06
SCALED MEANS											
LOW	0.89	1.03	1.06	0.74	1.4	0.87	0.97	1.16	1.04	1.07	0.95
HIGH	1.04	1.06	1.03	0.74	1.27	0.99	0.95	1.06	1.07	1.2	0.93
GROWTH PREDICTIONS	1928	1927	1926	1925	1924	1923	1922	1921	1920	1919	1918
GROWTH	1.46	1.03	1.08	1.13	1.52	1.19	1.03	1.41	1.09	1.31	0.58
FIRST DIFF	0.43	-0.05	-0.05	-0.39	0.33	0.16	-0.38	0.32	-0.22	0.73	-0.21
SCALED PREDICTIONS	1.43	0.95	0.95	0.61	1.33	1.16	0.62	1.32	0.78	1.73	0.79
TREE	1917	1916	1915	1914	1913	1912	1911	1910	1909	1908	1907
LOW MEAN	1.28	1.64	1.54	1.53	1.7	1.6	1.41	1.63	1.55	1.69	1.63
HIGH MEAN	0.69	0.91	0.87	0.94	1	0.85	0.77	0.81	0.73	0.9	0.79
FDIFFS											
LOW MEAN	-0.36	0.1	0	-0.16	0.1	0.19	-0.18	0.16	-0.14	0.11	0
HIGH MEAN	-0.2	0.04	-0.05	-0.06	0.14	0.08	-0.04	0.11	-0.15	0.12	-0.04
SCALED MEANS											
LOW	0.62	1.09	0.99	0.82	1.09	1.17	0.81	1.15	0.85	1.09	0.99
HIGH	0.79	1.03	0.94	0.93	1.13	1.07	0.95	1.09	0.84	1.1	0.95
GROWTH PREDICTIONS	1917	1916	1915	1914	1913	1912	1911	1910	1909	1908	1907
GROWTH	0.79	1.36	1.25	1.52	1.51	1.23	1.03	1.22	1.14	1.41	0.85
FIRST DIFF	-0.57	0.11	-0.27	0.01	0.28	0.2	-0.19	0.08	-0.27	0.56	-0.39
SCALED PREDICTIONS	0.43	1.11	0.73	1.01	1.28	1.2	0.81	1.08	0.73	1.56	0.61

Sheet1

TREE	1906	1905	1904	1903	1902	1901	1900	1899	1898	1897	1896
LOW MEAN	1.68	1.8	1.94	1.68	1.38	1.42	1.53	1.42	1.32	0.95	0.91
HIGH MEAN	0.83	0.79	0.97	0.8	0.69	0.75	0.73	0.77	0.75	0.72	0.77
FDIFFS											
LOW MEAN	-0.06	-0.09	0.26	0.31	-0.04	-0.11	0.15	0.19	0.38	0.04	0.31
HIGH MEAN	0.03	-0.17	0.17	0.11	-0.04	0.05	-0.01	0.02	0.03	-0.05	0.11
SCALED MEANS											
LOW	0.92	0.9	1.25	1.29	0.95	0.88	1.14	1.17	1.36	1.03	1.3
HIGH	1.02	0.82	1.16	1.1	0.95	1.04	0.98	1.01	1.02	0.94	1.1
GROWTH PREDICTIONS	1906	1905	1904	1903	1902	1901	1900	1899	1898	1897	1896
GROWTH	1.24	0.84	1.19	1.33	0.99	1.25	1.33	1.09	1.23	1.04	1.33
FIRST DIFF	0.41	-0.36	-0.14	0.34	-0.27	-0.08	0.24	-0.14	0.19	-0.29	0
SCALED PREDICTIONS	1.41	0.64	0.86	1.34	0.73	0.92	1.24	0.86	1.19	0.71	1
TREE	1895	1894	1893	1892	1891	1890	1889	1888	1887	1886	1885
LOW MEAN	0.59	0.6	0.5	0.6	0.57	0.51	0.46	0.44	0.42	0.65	0.43
HIGH MEAN	0.68	0.7	0.63	0.7	0.65	0.66	0.68	0.6	0.63	0.78	0.69
FDIFFS											
LOW MEAN	-0.01	0.1	-0.1	0.03	0.08	0.08	0.03	0.02	-0.24	0.22	-0.02
HIGH MEAN	-0.02	0.1	-0.07	0.05	-0.01	0.08	0.11	-0.03	-0.11	0.1	-0.02
SCALED MEANS											
LOW	0.98	1.09	0.89	1.01	1.07	1.07	1.01	1.01	0.75	1.21	0.97
HIGH	0.97	1.09	0.92	1.04	0.98	1.07	1.1	0.96	0.87	1.09	0.97
GROWTH PREDICTIONS	1895	1894	1893	1892	1891	1890	1889	1888	1887	1886	1885
GROWTH	1.33	1.23	0.94	1.4	0.91	1.32	1.28	1.03	1.06	1.25	1.19
FIRST DIFF	0.1	0.29	-0.46	0.49	-0.41	0.04	0.25	-0.03	-0.19	0.07	
SCALED PREDICTIONS	1.1	1.29	0.54	1.49	0.59	1.04	1.25	0.97	0.81	1.07	

TREE	1884	1883	1882	1881	1880	1879	1878	1877	1876	1875	1874
LOW MEAN	0.45	0.38	0.4	0.42	0.48	0.49	0.57	0.54	0.54	0.7	0.65
HIGH MEAN	0.7	0.71	0.65	0.7	0.83	0.8	0.69	0.61	0.63	0.81	0.74
FDIFFS											
LOW MEAN	0.07	-0.03	-0.01	-0.07	0.03	-0.07	0.03	0	-0.13	0.05	0.07
HIGH MEAN	0.02	0.06	-0.05	-0.13	0.07	0.1	0.08	0.02	-0.18	0.07	0.1
SCALED MEANS											
LOW	1.06	0.96	0.97	0.92	1.02	0.91	1.02	0.98	0.86	1.04	1.05
HIGH	1.01	1.05	0.94	0.86	1.06	1.09	1.07	1.01	0.81	1.06	1.09
GROWTH PREDICTIONS											
GROWTH											
FIRST DIFF											
SCALED PREDICTIONS											

TREE	1873	1872	1871	1870	1869	1868	1867	1866	1865	1864	1863
LOW MEAN	0.58	0.6	0.76	0.86	0.74	0.78	0.81	0.73	0.73	0.81	0.83
HIGH MEAN	0.63	0.68	0.69	0.74	0.56	0.56	0.73	0.59	0.56	0.69	0.64
FDIFFS											
LOW MEAN	-0.02	-0.13	-0.1	0.26	-0.04	-0.04	0.08	0	-0.08	-0.02	-0.05
HIGH MEAN	-0.05	0.03	-0.04	0.32	-0.01	-0.11	0.14	0.03	-0.13	0.05	-0.07
SCALED MEANS											
LOW	0.97	0.86	0.89	1.24	0.95	0.95	1.07	0.99	0.9	0.96	0.94
HIGH	0.94	1.02	0.94	1.31	0.98	0.88	1.13	1.02	0.86	1.03	0.92
GROWTH PREDICTIONS											
GROWTH											
FIRST DIFF											
SCALED PREDICTIONS											

Sheet1

TREE	1862	1861	1860	1859	1858	1857	1856	1855	1854	1853	1852
LOW MEAN	0.88	0.8	0.81	0.81	0.79	0.73	0.72	0.62	0.54	0.49	0.42
HIGH MEAN	0.71	0.65	0.54	0.6	0.64	0.61	0.73	0.66	0.52	0.65	0.67
FDIFFS											
LOW MEAN	0.08	-0.02	0.1	0.01	0.11	0.06	0.1	0.09	0.09	0.06	-0.15
HIGH MEAN	0.05	0.12	-0.01	-0.03	0.03	-0.12	0.07	0.14	-0.07	-0.02	0.02
SCALED MEANS											
LOW	1.07	0.97	1.09	1	1.1	1.05	1.08	1.07	1.07	1.05	0.84
HIGH	1.04	1.11	0.98	0.95	1.01	0.87	1.06	1.13	0.91	0.97	1.01
GROWTH PREDICTIONS											
GROWTH											
FIRST DIFF											
SCALED PREDICTIONS											

TREE	1851	1850	1849	1848	1847	1846	1845	1844	1843	1842	1841
LOW MEAN	0.57	0.48	0.46	0.58	0.5	0.49	0.46	0.29	0.39	0.44	0.43
HIGH MEAN	0.65	0.62	0.51	0.65	0.63	0.61	0.61	0.36	0.47	0.53	0.54
FDIFFS											
LOW MEAN	0.08	0.14	-0.12	0.08	0.01	0.03	0.18	-0.11	0.01	0.01	-0.1
HIGH MEAN	0.03	0.17	-0.13	0.02	0.02	0	0.25	-0.11	-0.05	-0.02	-0.18
SCALED MEANS											
LOW	1.07	1.13	0.86	1.07	0.99	1.02	1.16	0.88	0.99	0.99	0.88
HIGH	1.02	1.15	0.86	1.01	1	0.99	1.23	0.88	0.93	0.97	0.8
GROWTH PREDICTIONS											
GROWTH											
FIRST DIFF											
SCALED PREDICTIONS											

TREE	1840	1839	1838	1837	1836	1835	1834	1833	1832	1831	1830
LOW MEAN	0.54	0.43	0.48	0.52	0.62	0.6	0.67	0.64	0.6	0.53	0.67
HIGH MEAN	0.73	0.53	0.58	0.74	0.87	0.74	0.92	0.92	0.82	0.85	1.06
FDIFFS											
LOW MEAN	0.21	-0.04	-0.04	-0.1	0.02	-0.07	0.03	0.03	0.07	-0.13	0.13
HIGH MEAN	0.33	-0.06	-0.15	-0.13	0.12	-0.18	0.15	0.1	-0.03	-0.21	0.34
SCALED MEANS											
LOW	1.2	0.94	0.94	0.88	1.01	0.92	1.02	1.02	1.06	0.85	1.12
HIGH	1.32	0.93	0.84	0.86	1.11	0.81	1.14	1.09	0.96	0.78	1.33
GROWTH PREDICTIONS											
GROWTH											
FIRST DIFF											
SCALED PREDICTIONS											
TREE	1829	1828	1827	1826	1825	1824	1823	1822	1821	1820	1819
LOW MEAN	0.53	0.51	0.58	0.55	0.69	0.59	0.47	0.57	0.7	0.56	0.68
HIGH MEAN	0.71	0.77	0.81	0.83	0.99	0.71	0.67	0.71	0.68	0.56	0.66
FDIFFS											
LOW MEAN	0.02	-0.07	0.03	-0.14	0.1	0.12	-0.01	-0.13	0.14	-0.12	-0.01
HIGH MEAN	-0.06	-0.04	-0.02	-0.16	0.28	0.03	-0.04	0.04	0.11	-0.1	0.08
SCALED MEANS											
LOW	1.01	0.92	1.02	0.84	1.08	1.11	0.98	0.86	1.12	0.86	0.98
HIGH	0.93	0.95	0.97	0.83	1.27	1.02	0.95	1.03	1.1	0.89	1.07
GROWTH PREDICTIONS											
GROWTH											
FIRST DIFF											
SCALED PREDICTIONS											
TREE	1829	1828	1827	1826	1825	1824	1823	1822	1821	1820	1819
LOW MEAN	0.53	0.51	0.58	0.55	0.69	0.59	0.47	0.57	0.7	0.56	0.68
HIGH MEAN	0.71	0.77	0.81	0.83	0.99	0.71	0.67	0.71	0.68	0.56	0.66
FDIFFS											
LOW MEAN	0.02	-0.07	0.03	-0.14	0.1	0.12	-0.01	-0.13	0.14	-0.12	-0.01
HIGH MEAN	-0.06	-0.04	-0.02	-0.16	0.28	0.03	-0.04	0.04	0.11	-0.1	0.08
SCALED MEANS											
LOW	1.01	0.92	1.02	0.84	1.08	1.11	0.98	0.86	1.12	0.86	0.98
HIGH	0.93	0.95	0.97	0.83	1.27	1.02	0.95	1.03	1.1	0.89	1.07
GROWTH PREDICTIONS											
GROWTH											
FIRST DIFF											
SCALED PREDICTIONS											

Sheet1

TREE	1818	1817	1816	1815	1814	1813	1812	1811	1810	1809	1808
LOW MEAN	0.69	0.72	0.52	0.57	0.44	0.56	0.72	0.63	0.43	0.37	0.42
HIGH MEAN	0.58	0.71	0.64	0.7	0.56	0.53	0.45	0.57	0.48	0.47	0.63
FDIFFS											
LOW MEAN	0.12	0.2	-0.04	0.12	-0.11	-0.16	0.09	0.31	0.06	-0.05	-0.07
HIGH MEAN	-0.12	0.07	-0.06	0.14	0.13	0.08	-0.12	0.09	0.02	-0.16	-0.42
SCALED MEANS											
LOW	1.1	1.18	0.94	1.11	0.87	0.83	1.07	1.29	1.05	0.94	0.92
HIGH	0.87	1.05	0.93	1.13	1.12	1.07	0.86	1.08	1.01	0.82	0.57
GROWTH PREDICTIONS											
GROWTH											
FIRST DIFF											
SCALED PREDICTIONS											

TREE	1807	1806	1805	1804	1803	1802	1801	1800	1799	1798	1797
LOW MEAN	0.49	0.26	0.4	0.31	0.4	0.33	0.4	0.38	0.32	0.39	0.49
HIGH MEAN	1.05	0.74	0.68	0.73	0.95	0.73	0.91	1.07	0.81	0.74	0.7
FDIFFS											
LOW MEAN	0.32	-0.14	0.09	-0.1	0.07	-0.07	0.02	0.07	-0.08	-0.1	0.13
HIGH MEAN	0.31	0.05	-0.05	-0.23	0.22	-0.18	-0.17	0.27	0.07	0.04	-0.04
SCALED MEANS											
LOW	1.3	0.85	1.08	0.89	1.06	0.92	1	1.05	0.91	0.89	1.11
HIGH	1.3	1.04	0.94	0.76	1.21	0.81	0.82	1.25	1.06	1.03	0.95
GROWTH PREDICTIONS											
GROWTH											
FIRST DIFF											
SCALED PREDICTIONS											

TREE	1796	1795	1794	1793	1792	1791	1790	1789	1788	1787	1786
LOW MEAN	0.37	0.41	0.32	0.5	0.39	0.43	0.21	0.18	0.19	0.19	0.17
HIGH MEAN	0.74	0.75	0.64	1.08	0.62	0.77	0.71	0.83	0.85	0.92	0.95
FDIFFS											
LOW MEAN	-0.04	0.09	-0.18	0.11	-0.04	0.32	0.03	-0.01	0	0.02	0.01
HIGH MEAN	-0.01	0.1	-0.44	0.47	-0.15	0.06	-0.13	-0.02	0.16	-0.03	-0.1
SCALED MEANS											
LOW	0.95	1.07	0.81	1.1	0.95	1.31	1.02	0.98	0.99	1.01	1
HIGH	0.98	1.09	0.55	1.46	0.83	1.05	0.86	0.97	1.15	0.96	0.89
GROWTH PREDICTIONS											
GROWTH											
FIRST DIFF											
SCALED PREDICTIONS											
TREE	1785	1784	1783	1782	1781	1780	1779	1778	1777	1776	1775
LOW MEAN	0.16	0.14	0.14	0.15	0.12	0.11					
HIGH MEAN	1.05	1.39	0.93	0.94	0.92	0.87	0.51	0.48	0.52	0.39	0.54
FDIFFS											
LOW MEAN	0.02	0	-0.01	0.03	0.01	0.11					
HIGH MEAN	-0.34	0.46	-0.01	0.02	0.05	0.36	0.35	-0.04	0.13	-0.15	0.54
SCALED MEANS											
LOW	1.01	0.99	0.98	1.02	1	1.1	0.99	0.99	0.99	0.99	0.99
HIGH	0.64	1.45	0.98	1	1.04	1.35	1.34	0.95	1.12	0.84	1.53
GROWTH PREDICTIONS											
GROWTH											
FIRST DIFF											
SCALED PREDICTIONS											

Figure 5

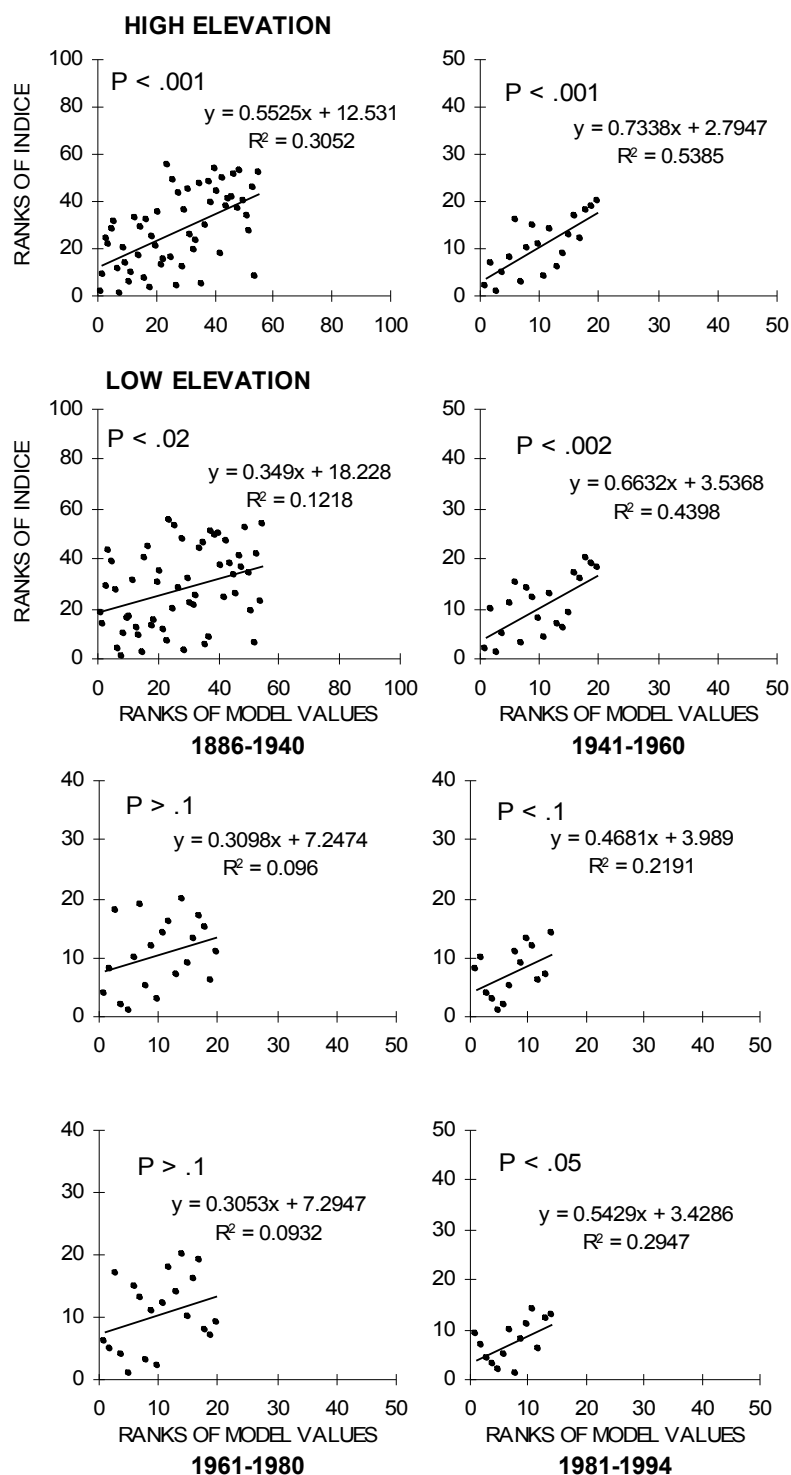


Figure 5. Spearman's rank correlation of tree-ring indices and temperature model values. All values were first standardized as in Figure 4, then transformed by ranking within each verification period.

Figure 5 Table Data

TREE	1994	1993	1992	1991	1990	1989	1988	1987	1986	1985	1984
LOW MEAN	0.87	1.22	1.14	0.97	1	0.93	1.04	1.09	0.94	0.92	0.81
HIGH MEAN	0.62	0.73	0.6	0.65	0.62	0.59	0.76	0.71	0.54	0.57	0.51
FDIFFS											
LOW MEAN	-0.37	0.08	0.16	-0.04	0.08	-0.12	-0.05	0.16	0.01	0.11	-0.13
HIGH MEAN	-0.11	0.12	-0.05	0.03	0.04	-0.17	0.05	0.16	-0.02	0.06	0.03
SCALED MEANS											
LOW RANKS	14	5	1	9	6	11	10	2	8	4	12
RANK HIGH	12	2	11	8	6	13	5	1	9	4	7
GROWTH PREDICTIONS	1994	1993	1992	1991	1990	1989	1988	1987	1986	1985	1984
GROWTH	1.09	1.38	1.26	1.45	0.7	1.08	1.35	1.38	1.24	1.44	1.07
FIRST DIFF	-0.29	0.12	-0.2	0.75	-0.38	-0.27	-0.03	0.14	-0.2	0.37	-0.6
MODEL RANKS	11	6	8	1	12	10	7	5	9	3	13
TREE	1983	1982	1981	1980	1979	1978	1977	1976	1975	1974	1973
LOW MEAN	0.94	0.8	0.74	0.98	0.92	0.95	0.89	0.99	0.96	0.89	1.06
HIGH MEAN	0.48	0.38	0.41	0.65	0.56	0.69	0.65	0.76	0.89	0.73	0.87
FDIFFS											
LOW MEAN	0.13	0.07	-0.24	0.06	-0.03	0.06	-0.1	0.03	0.07	-0.17	0
HIGH MEAN	0.1	-0.03	-0.24	0.08	-0.12	0.04	-0.12	-0.13	0.16	-0.13	-0.05
SCALED MEANS											
LOW RANKS	3	7	13	6	12	5	16	8	4	18	9
RANK HIGH	3	10	14	4	14	8	13	15	2	16	11
GROWTH PREDICTIONS	1983	1982	1981	1980	1979	1978	1977	1976	1975	1974	1973
GROWTH	1.66	1.31	0.81	1.47	1.22	1.24	1.01	1.12	1.29	1.09	1.12
FIRST DIFF	0.35	0.49	-0.65	0.25	-0.02	0.23	-0.11	-0.17	0.19	-0.02	-0.27
MODEL RANKS	4	2	14	1	11	2	16	18	4	12	20
TREE	1972	1971	1970	1969	1968	1967	1966	1965	1964	1963	1962
LOW MEAN	1.06	1.19	1.12	1.05	1.07	1.09	1.15	1.32	1.37	1.45	1.41
HIGH MEAN	0.92	1.09	0.94	0.88	0.84	0.92	0.87	1.02	1.22	1.22	1.17
FDIFFS											
LOW MEAN	-0.13	0.07	0.07	-0.02	-0.02	-0.07	-0.17	-0.04	-0.08	0.04	-0.32
HIGH MEAN	-0.16	0.15	0.06	0.04	-0.08	0.05	-0.15	-0.2	0	0.05	-0.22
SCALED MEANS											
LOW RANKS	17	2	3	10	11	14	19	13	15	7	20
RANK HIGH	18	3	5	9	12	7	17	19	10	6	20
GROWTH PREDICTIONS	1972	1971	1970	1969	1968	1967	1966	1965	1964	1963	1962
GROWTH	1.38	1.19	1.2	1.15	1.26	1.22	1.3	1.42	1.28	1.11	1.31
FIRST DIFF	0.19	-0.01	0.05	-0.11	0.03	-0.07	-0.12	0.14	0.16	-0.2	-0.08
MODEL RANKS	3	10	8	15	9	13	17	7	6	19	14

Sheet1

TREE	1961	1960	1959	1958	1957	1956	1955	1954	1953	1952	1951
LOW MEAN	1.73	1.61	1.62	2.14	1.87	1.44	1.78	1.65	1.63	1.67	1.6
HIGH MEAN	1.39	1.16	1.27	1.52	1.32	0.99	1.45	1.29	1.19	1.29	1.33
FDIFFS											
LOW MEAN	0.12	-0.01	-0.52	0.27	0.43	-0.34	0.13	0.02	-0.04	0.07	0.25
HIGH MEAN	0.23	-0.11	-0.24	0.2	0.33	-0.45	0.15	0.1	-0.1	-0.04	0.19
SCALED MEANS											
LOW RANKS	1	12	20	4	2	18	7	11	13	9	5
RANK HIGH	1	15	18	4	2	20	6	8	14	13	5
GROWTH PREDICTIONS	1961	1960	1959	1958	1957	1956	1955	1954	1953	1952	1951
GROWTH	1.39	1.22	1.1	1.57	1.54	0.65	1.53	1.55	1.29	1.26	1.49
FIRST DIFF	0.17	0.12	-0.47	0.04	0.88	-0.87	-0.02	0.26	0.03	-0.23	0.31
MODEL RANKS	5	9	18	11	1	20	13	5	12	15	4
TREE	1950	1949	1948	1947	1946	1945	1944	1943	1942	1941	1940
LOW MEAN	1.35	1.46	0.99	1.46	1.42	1.48	1.25	1.15	1.22	1.29	0.98
HIGH MEAN	1.14	1.33	0.93	1.29	1.18	1.11	1.04	1	1.01	1.14	0.84
FDIFFS											
LOW MEAN	-0.11	0.47	-0.48	0.04	-0.06	0.23	0.1	-0.07	-0.07	0.31	-0.18
HIGH MEAN	-0.19	0.4	-0.36	0.11	0.07	0.07	0.04	0	-0.14	0.31	-0.26
SCALED MEANS											
LOW RANKS	17	1	19	10	14	6	8	16	15	3	50
RANK HIGH	17	1	19	7	10	9	11	12	16	3	54
GROWTH PREDICTIONS	1950	1949	1948	1947	1946	1945	1944	1943	1942	1941	1940
GROWTH	1.17	1.42	1	1.56	1.12	0.94	1.16	1.09	1.47	1.24	1.03
FIRST DIFF	-0.24	0.42	-0.56	0.44	0.18	-0.22	0.07	-0.37	0.23	0.21	-0.21
MODEL RANKS	16	3	19	2	8	14	10	17	6	7	40

Sheet1

TREE	1939	1938	1937	1936	1935	1934	1933	1932	1931	1930	1929
LOW MEAN	1.17	1.13	0.87	0.94	0.91	1.29	1.23	1.48	1.42	1.3	1.27
HIGH MEAN	1.09	1.08	1.05	0.93	0.87	1.27	1.16	1.29	1.36	1.17	0.98
FDIFFS											
LOW MEAN	0.04	0.26	-0.07	0.03	-0.37	0.06	-0.25	0.06	0.12	0.03	-0.11
HIGH MEAN	0.01	0.03	0.12	0.06	-0.41	0.12	-0.13	-0.07	0.19	0.19	-0.09
SCALED MEANS											
LOW RANKS	27	6	40	30	55	23	53	22	13	28	46
RANK HIGH	31	27	7	21	55	8	49	45	3	4	47
GROWTH PREDICTIONS											
GROWTH	1939	1938	1937	1936	1935	1934	1933	1932	1931	1930	1929
FIRST DIFF	1.23	0.88	1.29	1.12	1.01	0.95	1.49	1.46	1.5	1.37	1.35
MODEL RANKS	0.35	-0.41	0.17	0.11	0.06	-0.53	0.03	-0.04	0.14	0.01	-0.11
	6	52	16	20	24	54	26	31	18	27	35
TREE	1928	1927	1926	1925	1924	1923	1922	1921	1920	1919	1918
LOW MEAN	1.38	1.48	1.44	1.36	1.68	1.26	1.41	1.42	1.28	1.26	1.21
HIGH MEAN	1.06	1.01	0.94	0.9	1.15	0.87	0.88	0.94	0.89	0.84	0.63
FDIFFS											
LOW MEAN	-0.1	0.05	0.07	-0.24	0.42	-0.11	-0.01	0.17	0.05	0.08	-0.04
HIGH MEAN	0.06	0.07	0.04	-0.25	0.28	0	-0.03	0.07	0.08	0.21	-0.06
SCALED MEANS											
LOW RANKS	43	25	21	52	1	45	36	10	24	18	37
RANK HIGH	22	19	26	53	1	32	37	20	18	2	44
GROWTH PREDICTIONS											
GROWTH	1928	1927	1926	1925	1924	1923	1922	1921	1920	1919	1918
FIRST DIFF	1.46	1.03	1.08	1.13	1.52	1.19	1.03	1.41	1.09	1.31	0.58
MODEL RANKS	0.43	-0.05	-0.05	-0.39	0.33	0.16	-0.38	0.32	-0.22	0.73	-0.21
	4	33	32	49	8	17	48	9	42	1	41

Sheet1

TREE	1917	1916	1915	1914	1913	1912	1911	1910	1909	1908	1907
LOW MEAN	1.28	1.64	1.54	1.53	1.7	1.6	1.41	1.63	1.55	1.69	1.63
HIGH MEAN	0.69	0.91	0.87	0.94	1	0.85	0.77	0.81	0.73	0.9	0.79
FDIFFS											
LOW MEAN	-0.36	0.1	0	-0.16	0.1	0.19	-0.18	0.16	-0.14	0.11	0
HIGH MEAN	-0.2	0.04	-0.05	-0.06	0.14	0.08	-0.04	0.11	-0.15	0.12	-0.04
SCALED MEANS											
LOW RANKS	54	15	33	48	17	9	49	11	47	14	34
RANK HIGH	52	25	41	43	6	17	39	13	50	9	40
GROWTH PREDICTIONS	1917	1916	1915	1914	1913	1912	1911	1910	1909	1908	1907
GROWTH	0.79	1.36	1.25	1.52	1.51	1.23	1.03	1.22	1.14	1.41	0.85
FIRST DIFF	-0.57	0.11	-0.27	0.01	0.28	0.2	-0.19	0.08	-0.27	0.56	-0.39
MODEL RANKS	55	19	45	28	11	14	39	22	43	2	50
TREE	1906	1905	1904	1903	1902	1901	1900	1899	1898	1897	1896
LOW MEAN	1.68	1.8	1.94	1.68	1.38	1.42	1.53	1.42	1.32	0.95	0.91
HIGH MEAN	0.83	0.79	0.97	0.8	0.69	0.75	0.73	0.77	0.75	0.72	0.77
FDIFFS											
LOW MEAN	-0.06	-0.09	0.26	0.31	-0.04	-0.11	0.15	0.19	0.38	0.04	0.31
HIGH MEAN	0.03	-0.17	0.17	0.11	-0.04	0.05	-0.01	0.02	0.03	-0.05	0.11
SCALED MEANS											
LOW RANKS	39	41	5	4	38	44	12	8	2	26	3
RANK HIGH	28	51	5	11	38	23	33	30	29	42	12
GROWTH PREDICTIONS	1906	1905	1904	1903	1902	1901	1900	1899	1898	1897	1896
GROWTH	1.24	0.84	1.19	1.33	0.99	1.25	1.33	1.09	1.23	1.04	1.33
FIRST DIFF	0.41	-0.36	-0.14	0.34	-0.27	-0.08	0.24	-0.14	0.19	-0.29	0
MODEL RANKS	5	47	36	7	44	34	13	37	15	46	29

Sheet1

TREE	1895	1894	1893	1892	1891	1890	1889	1888	1887	1886	1885
LOW MEAN	0.59	0.6	0.5	0.6	0.57	0.51	0.46	0.44	0.42	0.65	0.43
HIGH MEAN	0.68	0.7	0.63	0.7	0.65	0.66	0.68	0.6	0.63	0.78	0.69
FDIFFS											
LOW MEAN	-0.01	0.1	-0.1	0.03	0.08	0.08	0.03	0.02	-0.24	0.22	-0.02
HIGH MEAN	-0.02	0.1	-0.07	0.05	-0.01	0.08	0.11	-0.03	-0.11	0.1	-0.02
SCALED MEANS											
LOW RANKS	35	16	42	29	19	20	31	32	51	7	
RANK HIGH	35	14	46	24	34	16	10	36	48	15	
GROWTH PREDICTIONS											
GROWTH	1.33	1.23	0.94	1.4	0.91	1.32	1.28	1.03	1.06	1.25	1.19
FIRST DIFF	0.1	0.29	-0.46	0.49	-0.41	0.04	0.25	-0.03	-0.19	0.07	
MODEL RANKS	21	10	53	3	51	25	12	30	38	23	

TREE	1884	1883	1882	1881	1880	1879	1878	1877	1876	1875	1874
LOW MEAN	0.45	0.38	0.4	0.42	0.48	0.49	0.57	0.54	0.54	0.7	0.65
HIGH MEAN	0.7	0.71	0.65	0.7	0.83	0.8	0.69	0.61	0.63	0.81	0.74
FDIFFS											
LOW MEAN	0.07	-0.03	-0.01	-0.07	0.03	-0.07	0.03	0	-0.13	0.05	0.07
HIGH MEAN	0.02	0.06	-0.05	-0.13	0.07	0.1	0.08	0.02	-0.18	0.07	0.1
SCALED MEANS											
LOW RANKS											
RANK HIGH											
GROWTH PREDICTIONS											
GROWTH											
FIRST DIFF											
MODEL RANKS											

TREE	1873	1872	1871	1870	1869	1868	1867	1866	1865	1864	1863
LOW MEAN	0.58	0.6	0.76	0.86	0.74	0.78	0.81	0.73	0.73	0.81	0.83
HIGH MEAN	0.63	0.68	0.69	0.74	0.56	0.56	0.73	0.59	0.56	0.69	0.64
FDIFFS											
LOW MEAN	-0.02	-0.13	-0.1	0.26	-0.04	-0.04	0.08	0	-0.08	-0.02	-0.05
HIGH MEAN	-0.05	0.03	-0.04	0.32	-0.01	-0.11	0.14	0.03	-0.13	0.05	-0.07
SCALED MEANS											
LOW RANKS											
RANK HIGH											
GROWTH PREDICTIONS											
GROWTH											
FIRST DIFF											
MODEL RANKS											

Sheet1

TREE	1862	1861	1860	1859	1858	1857	1856	1855	1854	1853	1852
------	------	------	------	------	------	------	------	------	------	------	------

LOW MEAN	0.88	0.8	0.81	0.81	0.79	0.73	0.72	0.62	0.54	0.49	0.42
HIGH MEAN	0.71	0.65	0.54	0.6	0.64	0.61	0.73	0.66	0.52	0.65	0.67

FDIFFS

LOW MEAN	0.08	-0.02	0.1	0.01	0.11	0.06	0.1	0.09	0.09	0.06	-0.15
HIGH MEAN	0.05	0.12	-0.01	-0.03	0.03	-0.12	0.07	0.14	-0.07	-0.02	0.02

SCALED MEANS

LOW RANKS

RANK HIGH

GROWTH PREDICTIONS

GROWTH

FIRST DIFF

MODEL RANKS

TREE	1851	1850	1849	1848	1847	1846	1845	1844	1843	1842	1841
------	------	------	------	------	------	------	------	------	------	------	------

LOW MEAN	0.57	0.48	0.46	0.58	0.5	0.49	0.46	0.29	0.39	0.44	0.43
HIGH MEAN	0.65	0.62	0.51	0.65	0.63	0.61	0.61	0.36	0.47	0.53	0.54

FDIFFS

LOW MEAN	0.08	0.14	-0.12	0.08	0.01	0.03	0.18	-0.11	0.01	0.01	-0.1
HIGH MEAN	0.03	0.17	-0.13	0.02	0.02	0	0.25	-0.11	-0.05	-0.02	-0.18

SCALED MEANS

LOW RANKS

RANK HIGH

GROWTH PREDICTIONS

GROWTH

FIRST DIFF

MODEL RANKS

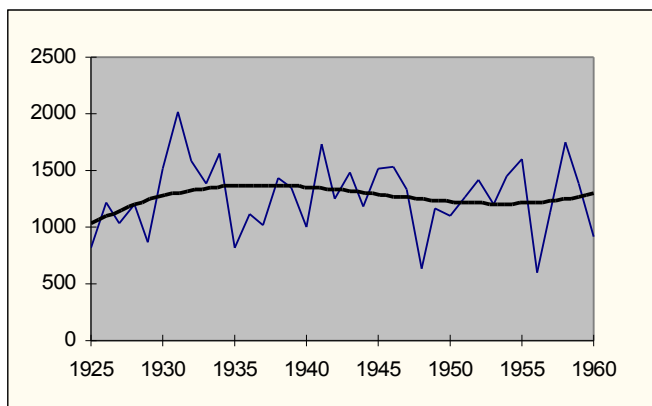
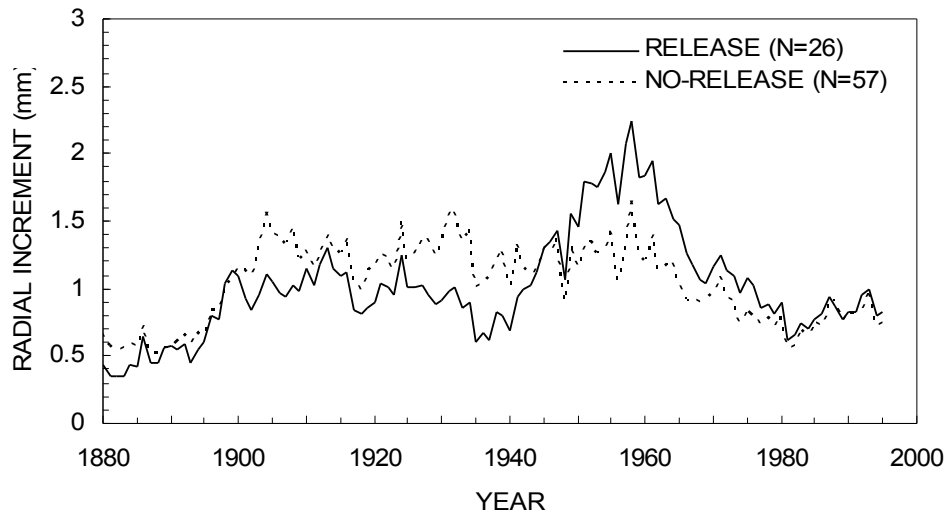
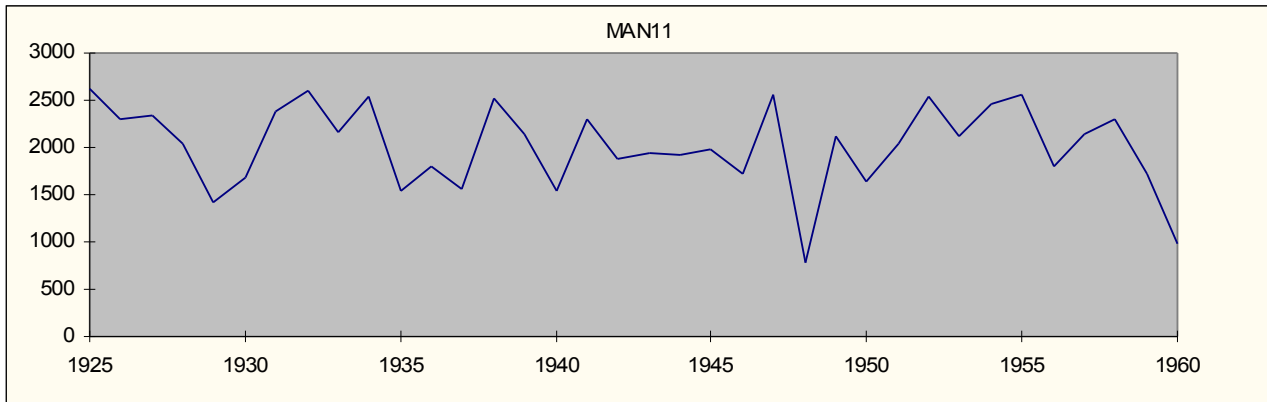
Sheet1

TREE	1840	1839	1838	1837	1836	1835	1834	1833	1832	1831	1830
LOW MEAN	0.54	0.43	0.48	0.52	0.62	0.6	0.67	0.64	0.6	0.53	0.67
HIGH MEAN	0.73	0.53	0.58	0.74	0.87	0.74	0.92	0.92	0.82	0.85	1.06
FDIFFS											
LOW MEAN	0.21	-0.04	-0.04	-0.1	0.02	-0.07	0.03	0.03	0.07	-0.13	0.13
HIGH MEAN	0.33	-0.06	-0.15	-0.13	0.12	-0.18	0.15	0.1	-0.03	-0.21	0.34
SCALED MEANS											
LOW RANKS											
RANK HIGH											
GROWTH PREDICTIONS											
GROWTH											
FIRST DIFF											
MODEL RANKS											
TREE	1829	1828	1827	1826	1825	1824	1823	1822	1821	1820	1819
LOW MEAN	0.53	0.51	0.58	0.55	0.69	0.59	0.47	0.57	0.7	0.56	0.68
HIGH MEAN	0.71	0.77	0.81	0.83	0.99	0.71	0.67	0.71	0.68	0.56	0.66
FDIFFS											
LOW MEAN	0.02	-0.07	0.03	-0.14	0.1	0.12	-0.01	-0.13	0.14	-0.12	-0.01
HIGH MEAN	-0.06	-0.04	-0.02	-0.16	0.28	0.03	-0.04	0.04	0.11	-0.1	0.08
SCALED MEANS											
LOW RANKS											
RANK HIGH											
GROWTH PREDICTIONS											
GROWTH											
FIRST DIFF											
MODEL RANKS											
TREE	1818	1817	1816	1815	1814	1813	1812	1811	1810	1809	1808
LOW MEAN	0.69	0.72	0.52	0.57	0.44	0.56	0.72	0.63	0.43	0.37	0.42
HIGH MEAN	0.58	0.71	0.64	0.7	0.56	0.53	0.45	0.57	0.48	0.47	0.63
FDIFFS											
LOW MEAN	0.12	0.2	-0.04	0.12	-0.11	-0.16	0.09	0.31	0.06	-0.05	-0.07
HIGH MEAN	-0.12	0.07	-0.06	0.14	0.13	0.08	-0.12	0.09	0.02	-0.16	-0.42
SCALED MEANS											
LOW RANKS											
RANK HIGH											
GROWTH PREDICTIONS											
GROWTH											
FIRST DIFF											
MODEL RANKS											

Sheet1

TREE	1807	1806	1805	1804	1803	1802	1801	1800	1799	1798	1797
LOW MEAN	0.49	0.26	0.4	0.31	0.4	0.33	0.4	0.38	0.32	0.39	0.49
HIGH MEAN	1.05	0.74	0.68	0.73	0.95	0.73	0.91	1.07	0.81	0.74	0.7
FDIFFS											
LOW MEAN	0.32	-0.14	0.09	-0.1	0.07	-0.07	0.02	0.07	-0.08	-0.1	0.13
HIGH MEAN	0.31	0.05	-0.05	-0.23	0.22	-0.18	-0.17	0.27	0.07	0.04	-0.04
SCALED MEANS											
LOW RANKS											
RANK HIGH											
GROWTH PREDICTIONS											
GROWTH											
FIRST DIFF											
MODEL RANKS											
TREE	1796	1795	1794	1793	1792	1791	1790	1789	1788	1787	1786
LOW MEAN	0.37	0.41	0.32	0.5	0.39	0.43	0.21	0.18	0.19	0.19	0.17
HIGH MEAN	0.74	0.75	0.64	1.08	0.62	0.77	0.71	0.83	0.85	0.92	0.95
FDIFFS											
LOW MEAN	-0.04	0.09	-0.18	0.11	-0.04	0.32	0.03	-0.01	0	0.02	0.01
HIGH MEAN	-0.01	0.1	-0.44	0.47	-0.15	0.06	-0.13	-0.02	0.16	-0.03	-0.1
SCALED MEANS											
LOW RANKS											
RANK HIGH											
GROWTH PREDICTIONS											
GROWTH											
FIRST DIFF											
MODEL RANKS											
TREE	1785	1784	1783	1782	1781	1780	1779	1778	1777	1776	1775
LOW MEAN	0.16	0.14	0.14	0.15	0.12	0.11	Err:520	###	###	###	###
HIGH MEAN	1.05	1.39	0.93	0.94	0.92	0.87	0.51	0.48	0.52	0.39	0.54
FDIFFS											
LOW MEAN	0.02	0	-0.01	0.03	0.01	0.11					
HIGH MEAN	-0.34	0.46	-0.01	0.02	0.05	0.36	0.35	-0.04	0.13	-0.15	0.54
SCALED MEANS											
LOW RANKS											
RANK HIGH											
GROWTH PREDICTIONS											
GROWTH											
FIRST DIFF											
MODEL RANKS											

Figure 6



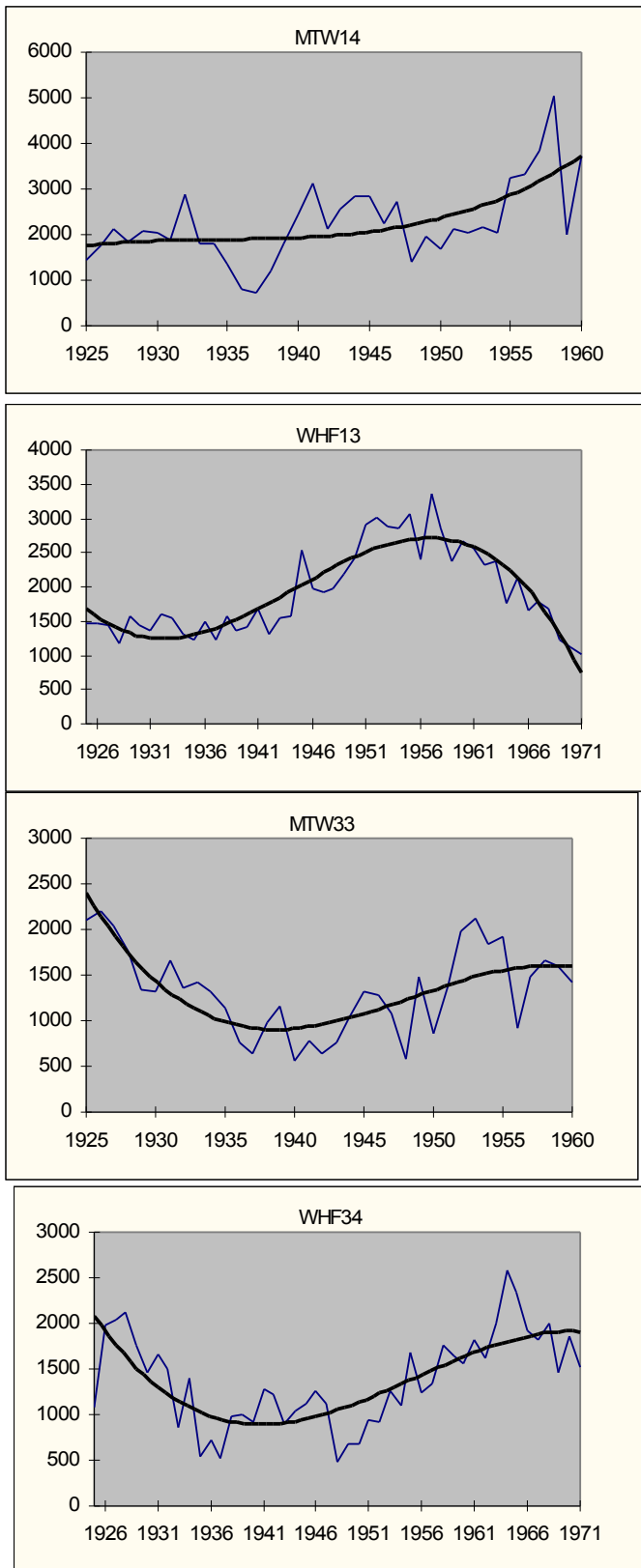


Figure 6. Mean annual radial growth for red spruce, classified by release category. See text for definition of categories. Other details as in Figure 1.

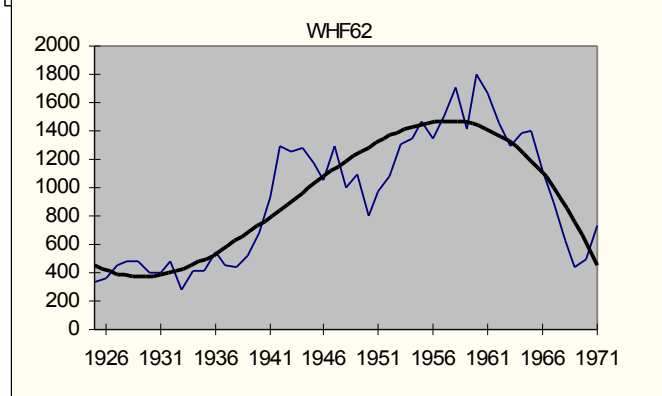
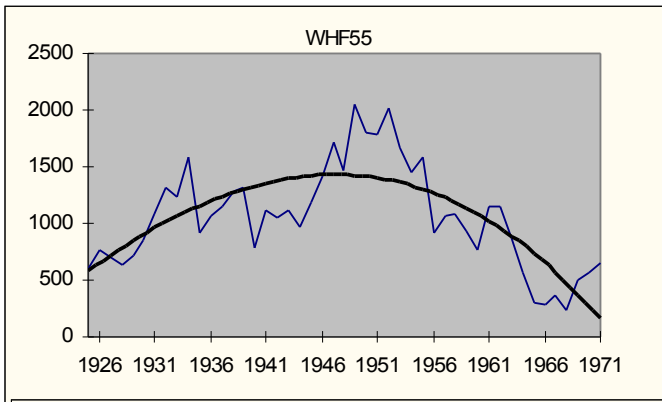
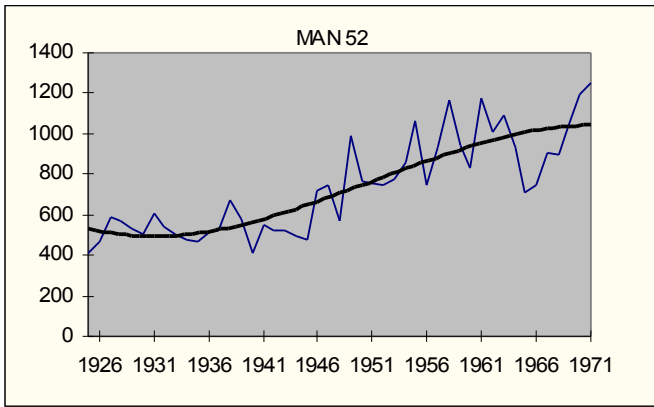
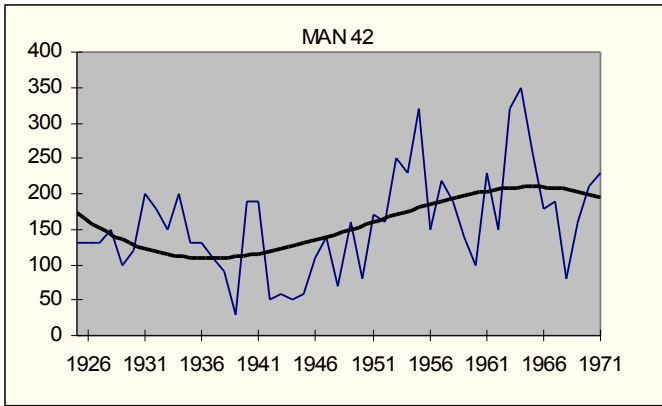


Figure 6 - Table Data

ELEV	RELEASE(1-no, 2-yes)	TREE	2000	1999	1998	1997	1996	1995	1994
1	1	MAN11						970	900
1	1	MAN12						1695	1395
1	1	MAN14						420	570
1	1	MAN15						965	990
1	1	MAN22						1360	1150
1	1	MAN23						1500	1905
1	1	MAN24						740	890
1	1	MAN32						730	875
1	1	MAN3G1						1280	1100
1	1	MTW13						890	860
1	1	MTW14						600	645
1	1	MTW21						675	550
1	1	MTW24						610	620
1	1	MTW25						410	370
1	1	MTW2G3						530	435
1	1	MTW2G4						610	940
1	1	MTW35						460	555
1	1	WHF11						1230	975
1	1	WHF14						785	480
1	1	WHF15						485	595
1	1	WHF21						1070	1435
1	1	WHF22						520	510
1	1	WHF23						705	855
1	1	WHF25						680	580
1	1	WHF32						1685	1325
1	1	WHF34						2060	2090
1	1	WHF35						1140	1100
1	2	MAN25							
1	2	MAN33						1010	1025
1	2	MAN34						770	1035
1	2	MAN35						530	600
1	2	MTW11						385	320
1	2	MTW12						1050	1005
1	2	MTW15						580	415
1	2	MTW22						570	490
1	2	MTW23						525	540
1	2	MTW2G1						1945	2460
1	2	MTW32						505	405
1	2	MTW33							
1	2	MTW3G1						890	880
1	2	WHF12						255	325
1	2	WHF13						575	550
1	2	WHF24						1540	1380
1	2	WHF31						470	580
1	2	WHF33						1185	670
2	1	MAN41						285	240

Sheet3

2	1	MAN42			
2	1	MAN44	510	595	
2	1	MAN51	360	385	
2	1	MAN52	60	90	
2	1	MAN61	1270	1070	
2	1	MAN64	410	355	
2	1	MTW51	750	1070	
2	1	MTW52	240	350	
2	1	MTW53	100	215	
2	1	MTW54	610	585	
2	1	MTW55	815	905	
2	1	MTW61	380	425	
2	1	MTW62	505	490	
2	1	MTW64	770	810	
2	1	MTW65	695	985	
2	1	MTW6G1	185	255	
2	1	MTW6G2	605	650	
2	1	WHF41	815	725	
2	1	WHF42	1135	990	
2	1	WHF43	1700	1205	
2	1	WHF44	1350	1010	
2	1	WHF45	770	600	
2	1	WHF51	850	765	
2	1	WHF52	250	120	
2	1	WHF55	145	90	
2	1	WHF61	125	105	
2	1	WHF62	100	130	
2	1	WHF63	260	230	
2	1	WHF65	1560	1000	
2	2	MAN43	1225	985	
2	2	MAN45	665	550	
2	2	MAN54	200	205	
2	2	MAN55	250	235	
2	2	MTW43	180	220	
2	2	MTW45	1570	1450	
2	2	MTW4G1	745	950	
2	2	WHF64	2170	1740	
		LREL	0.8	0.79	
		LNO	0.92	0.91	
		HREL	0.88	0.79	
		HNO	0.61	0.57	
		RELEASE (N=26)	24	0.82	0.79
		NO-RELEASE (N=57)	56	0.76	0.73

Sheet3

ELEV	RELEASE(1-no, 2-yes)	TREE	1993	1992	1991	1990	1989	1988	1987
1	1	MAN11	1560	975	820	945	935	1035	1025
1	1	MAN12	1650	1575	1465	1565	1035	1730	2025
1	1	MAN14	635	435	335	255	235	305	240
1	1	MAN15	1050	990	1370	1045	1145	1300	980
1	1	MAN22	2455	2290	1485	2010	1305	1775	2990
1	1	MAN23	2085	2060	1700	2570	2450	1965	2355
1	1	MAN24	415	355	465	710	715	835	890
1	1	MAN32	1185	780	735	935	820	720	1195
1	1	MAN3G1	1495	1130	1100	1060	1220	1415	1745
1	1	MTW13	1510	1780	1740	1585	1380	1685	1705
1	1	MTW14	870	1415	1265	675	690	840	940
1	1	MTW21	750	610	530	635	550	530	620
1	1	MTW24	915	750	695	915	685	775	975
1	1	MTW25	480	280	220	200	200	230	200
1	1	MTW2G3	905	800	630	380	575	810	1075
1	1	MTW2G4	790	820	840	970	1130	1100	1020
1	1	MTW35	635	645	515	390	505	595	555
1	1	WHF11	2205	2145	1800	2045	1940	2285	2420
1	1	WHF14	1480	1415	1230	1285	1095	940	930
1	1	WHF15	860	505	350	235	245	265	205
1	1	WHF21	1515	1265	1585	1440	865	1235	1250
1	1	WHF22	950	660	520	590	550	1060	810
1	1	WHF23	1415	1465	1140	1335	1405	1725	930
1	1	WHF25	935	735	840	850	730	995	745
1	1	WHF32	1925	1615	1330	1595	1375	1670	1260
1	1	WHF34	2740	2510	1900	1260	1670	1800	1360
1	1	WHF35	1830	1610	1265	1355	1180	1310	1325
1	2	MAN25				470	685	815	750
1	2	MAN33	970	770	890	800	1020	950	990
1	2	MAN34	1655	1585	1350	1620	1335	955	1385
1	2	MAN35	625	585	470	610	715	755	730
1	2	MTW11	460	480	490	305	665	845	695
1	2	MTW12	1820	1650	1415	1785	1005	1045	1595
1	2	MTW15	910	895	600	860	825	610	620
1	2	MTW22	750	970	850	800	760	1090	1200
1	2	MTW23	700	765	500	595	465	620	695
1	2	MTW2G1	3000	3125	2215	2425	2020	1665	2820
1	2	MTW32	535	595	430	455	445	650	615
1	2	MTW33	250	170	300	245	310	275	285
1	2	MTW3G1	1405	1645	1240	1355	1335	1420	865
1	2	WHF12	470	405	180	140	185	245	190
1	2	WHF13	930	1190	1000	695	690	695	570
1	2	WHF24	2195	1940	1740	1715	1290	1360	1665
1	2	WHF31	755	705	600	635	630	815	775
1	2	WHF33	850	870	730	715	630	1075	1015
2	1	MAN41	225	170	160	120	175	200	195
2	1	MAN42		100	70	150	100	20	60

Sheet3

2	1	MAN44	610	445	585	865	950	1205	990
2	1	MAN51	325	295	325	285	295	300	250
2	1	MAN52	90	100	90	140	130	90	100
2	1	MAN61	980	860	910	580	650	750	810
2	1	MAN64	310	315	270	280	485	510	395
2	1	MTW51	1400	910	1290	1115	465	665	535
2	1	MTW52	550	340	570	530	470	480	310
2	1	MTW53	205	125	185	275	215	350	325
2	1	MTW54	795	710	555	730	480	845	835
2	1	MTW55	1410	1165	980	1315	920	980	965
2	1	MTW61	495	375	410	495	540	670	625
2	1	MTW62	605	555	505	560	390	570	515
2	1	MTW64	1040	925	1040	965	905	1025	895
2	1	MTW65	1155	675	895	795	910	960	1100
2	1	MTW6G1	305	220	290	325	255	275	220
2	1	MTW6G2	810	700	725	975	775	930	875
2	1	WHF41	910	735	850	560	655	1085	1095
2	1	WHF42	1475	990	990	965	930	1220	1130
2	1	WHF43	1395	1220	1585	1270	1125	1275	670
2	1	WHF44	1210	1040	1085	920	1250	1915	1450
2	1	WHF45	480	470	290	250	280	290	185
2	1	WHF51	785	895	1035	930	725	1200	1415
2	1	WHF52	150	210	170	150	150	190	110
2	1	WHF55	110	125	110	110	155	240	155
2	1	WHF61	120	115	175	155	220	225	215
2	1	WHF62	100	110	60	135	185	180	185
2	1	WHF63	275	225	230	220	215	305	290
2	1	WHF65	1950	1950	2650	2090	2220	3130	3030
2	2	MAN43	1070	725	645	915	870	1090	1145
2	2	MAN45	635	855	540	440	350	390	375
2	2	MAN54	215	140	195	225	345	575	385
2	2	MAN55	195	155	120	100	165	375	240
2	2	MTW43	250	165	225	185	105	140	160
2	2	MTW45	1730	1570	1715	1675	1435	1795	2260
2	2	MTW4G1	910	600	515	325	175	285	240
2	2	WHF64	1655	1380	1645	1595	1655	1980	2115
		LREL	1.08	1.08	0.88	0.9	0.83	0.88	0.97
		LNO	1.31	1.17	1.03	1.07	0.99	1.15	1.18
		HREL	0.83	0.7	0.7	0.68	0.64	0.83	0.87
		HNO	0.7	0.57	0.64	0.61	0.57	0.74	0.66
		RELEASE (N=26)	1	0.96	0.82	0.83	0.77	0.87	0.94
		NO-RELEASE (N=57)	0.99	0.85	0.82	0.83	0.77	0.93	0.91

Sheet3

ELEV	RELEASE(1-no, 2-yes)	TREE	1986	1985	1984	1983	1982	1981	1980
1	1	MAN11	940	1125	1015	1890	1540	1520	1825
1	1	MAN12	1395	1595	1175	1675	1450	1270	1320
1	1	MAN14	260	395	385	480	365	355	410
1	1	MAN15	730	870	745	760	635	700	635
1	1	MAN22	2530	2285	1345	2465	1920	1510	1715
1	1	MAN23	2015	2350	1715	2290	2080	2345	2785
1	1	MAN24	610	710	725	660	615	635	660
1	1	MAN32	880	635	450	765	595	505	690
1	1	MAN3G1	1690	2395	2875	3175	2655	2090	2090
1	1	MTW13	2005	1610	1795	1560	1050	765	1290
1	1	MTW14	1225	1060	860	835	645	400	590
1	1	MTW21	460	495	370	450	470	285	445
1	1	MTW24	935	805	710	1040	725	450	905
1	1	MTW25	190	170	100	120	80	150	190
1	1	MTW2G3	775	360	615	365	250	15	140
1	1	MTW2G4	950	920	970	630	550	250	620
1	1	MTW35	505	435	590	660	535	285	435
1	1	WHF11	1720	1535	1165	1155	1015	985	1395
1	1	WHF14	595	775	600	755	550	1045	1240
1	1	WHF15	190	225	210	265	295	530	680
1	1	WHF21	750	825	840	1315	925	1155	1325
1	1	WHF22	810	840	630	470	470	500	660
1	1	WHF23	415	445	375	420	310	560	975
1	1	WHF25	550	515	390	590	540	540	635
1	1	WHF32	1120	1265	920	955	905	1020	1455
1	1	WHF34	1110	1410	840	870	830	580	1230
1	1	WHF35	1305	1300	1240	1265	1305	1045	1350
1	2	MAN25	570	510	530	475	375	330	300
1	2	MAN33	765	755	780	1045	1160	1185	1120
1	2	MAN34	1410	1370	1145	1225	1275	1250	1455
1	2	MAN35	605	550	540	780	880	855	1295
1	2	MTW11	600	715	495	470	290	240	410
1	2	MTW12	1805	1390	1140	1125	1055	1035	1280
1	2	MTW15	625	600	390	495	440	235	295
1	2	MTW22	1070	790	670	810	610	550	860
1	2	MTW23	720	670	660	740	915	920	1120
1	2	MTW2G1	2105	1715	1405	1560	1540	940	1615
1	2	MTW32	515	450	1040	1065	605	235	630
1	2	MTW33	370	225	170	75	115	225	80
1	2	MTW3G1	760	685	530	590	285	500	630
1	2	WHF12	145	190	245	265	245	270	450
1	2	WHF13	360	445	540	710	515	600	805
1	2	WHF24	1160	1330	865	1270	1250	1070	1785
1	2	WHF31	815	695	770	755	570	760	1680
1	2	WHF33	1105	1185	910	920	790	515	650
2	1	MAN41	110	150	195	205	130	235	255
2	1	MAN42	90	50	80	130	110	90	180

Sheet3

2	1	MAN44	460	540	615	465	390	615	700
2	1	MAN51	150	205	165	180	145	165	330
2	1	MAN52	120	50	50	30	40	40	90
2	1	MAN61	540	800	640	820	1060	840	1760
2	1	MAN64	295	390	300	340	285	440	615
2	1	MTW51	620	415	460	610	455	455	315
2	1	MTW52	180	200	230	350	150	330	600
2	1	MTW53	240	245	355	275	225	125	260
2	1	MTW54	715	860	905	805	545	560	1290
2	1	MTW55	850	935	710	515	430	460	780
2	1	MTW61	595	695	885	910	375	340	570
2	1	MTW62	475	665	510	445	305	300	455
2	1	MTW64	690	625	535	555	370	455	590
2	1	MTW65	1085	1100	1265	1580	1120	755	1175
2	1	MTW6G1	215	265	180	165	120	130	220
2	1	MTW6G2	805	915	800	595	735	830	1105
2	1	WHF41	510	440	300	340	230	330	695
2	1	WHF42	785	560	415	370	100	355	560
2	1	WHF43	225	335	330	475	315	570	940
2	1	WHF44	760	680	475	420	175	520	805
2	1	WHF45	145	195	150	135	75	315	490
2	1	WHF51	950	975	1080	990	1125	940	1015
2	1	WHF52	100	50	60	50	30	80	130
2	1	WHF55	50	80	60	100	135	0	250
2	1	WHF61	165	160	160	145	215	405	505
2	1	WHF62	190	170	220	110	185	55	385
2	1	WHF63	220	230	215	260	345	310	415
2	1	WHF65	2810	2600	1700	780	310	170	220
2	2	MAN43	695	1140	1010	1125	870	675	1060
2	2	MAN45	340	375	460	660	530	395	985
2	2	MAN54	245	290	315	350	220	220	455
2	2	MAN55	180	200	200	265	135	245	350
2	2	MTW43	110	145	265	195	110	190	345
2	2	MTW45	1880	1680	1215	1035	1345	1075	1245
2	2	MTW4G1	240	185	75	175	110	200	580
2	2	WHF64	1845	1880	1730	1255	1030	1370	1870
		LREL	0.86	0.79	0.71	0.8	0.72	0.65	0.91
		LNO	0.99	1.01	0.88	1.03	0.86	0.8	1.03
		HREL	0.69	0.74	0.66	0.63	0.54	0.55	0.86
		HNO	0.5	0.52	0.47	0.44	0.34	0.37	0.59
		RELEASE (N=26)	0.81	0.78	0.7	0.75	0.66	0.62	0.9
		NO-RELEASE (N=57)	0.73	0.75	0.66	0.72	0.59	0.57	0.8

Sheet3

ELEV	RELEASE(1-no, 2-yes)	TREE	1979	1978	1977	1976	1975	1974	1973
1	1	MAN11	1850	1660	1050	1065	920	925	1150
1	1	MAN12	1250	1435	1235	1075	1035	735	860
1	1	MAN14	365	350	305	420	370	490	710
1	1	MAN15	600	575	325	465	410	330	545
1	1	MAN22	1350	1365	1260	1300	900	1270	980
1	1	MAN23	2265	2195	1800	1575	1340	1525	2065
1	1	MAN24	675	575	470	595	630	640	615
1	1	MAN32	540	670	550	590	670	550	750
1	1	MAN3G1	2020	1740	1725	1815	1205	895	1360
1	1	MTW13	1190	1300	1805	2285	1975	2395	2235
1	1	MTW14	570	755	915	1000	875	1200	1100
1	1	MTW21	460	630	520	730	650	595	670
1	1	MTW24	855	945	845	795	690	610	645
1	1	MTW25	280	240	350	400	290	330	210
1	1	MTW2G3	265	310	515	930	640	555	550
1	1	MTW2G4	620	500	440	680	530	600	890
1	1	MTW35	445	490	360	515	510	395	620
1	1	WHF11	1320	1360	910	920	970	820	1140
1	1	WHF14	1280	1070	1210	990	1405	1170	1545
1	1	WHF15	825	870	760	710	935	680	1075
1	1	WHF21	1320	1705	1195	1375	1620	1625	2225
1	1	WHF22	480	750	1300	800	720	620	560
1	1	WHF23	865	1095	990	990	1090	775	780
1	1	WHF25	470	605	525	645	740	755	1005
1	1	WHF32	1315	1565	1390	1430	1560	1380	1675
1	1	WHF34	1360	1430	1320	930	750	590	460
1	1	WHF35	1160	1075	1175	1190	1535	1090	1250
1	2	MAN25	305	225	170	140	155	110	155
1	2	MAN33	1220	1160	885	995	1535	1645	1885
1	2	MAN34	940	1005	635	900	895	970	1075
1	2	MAN35	815	850	765	1055	960	845	1375
1	2	MTW11	360	435	520	640	765	1090	1105
1	2	MTW12	1170	1130	1555	2050	1540	1500	1535
1	2	MTW15	295	405	445	590	405	355	365
1	2	MTW22	880	970	1030	1520	1670	1320	2650
1	2	MTW23	1335	1370	1410	1305	1325	1165	1425
1	2	MTW2G1	2080	2025	1600	1890	1650	1500	1635
1	2	MTW32	700	675	485	805	745	635	860
1	2	MTW33	90	200	100	335	270	230	265
1	2	MTW3G1	690	740	1160	1675	1355	935	940
1	2	WHF12	475	590	740	665	685	455	420
1	2	WHF13	600	545	580	670	805	820	920
1	2	WHF24	1405	1225	1120	1155	1550	1485	1685
1	2	WHF31	1445	1510	1135	1115	1405	1125	1180
1	2	WHF33	595	615	565	700	540	500	610
2	1	MAN41	280	360	265	330	430	345	395
2	1	MAN42	130	170	190	300	310	210	200

Sheet3

2	1	MAN44	550	495	400	505	615	630	735
2	1	MAN51	240	405	345	565	815	615	690
2	1	MAN52	70	110	140	100	60	260	140
2	1	MAN61	1920	1980	1390	1510	1940	1430	1930
2	1	MAN64	580	720	650	740	995	615	780
2	1	MTW51	330	455	280	215	270	180	250
2	1	MTW52	360	350	390	450	370	340	400
2	1	MTW53	230	340	335	460	340	290	450
2	1	MTW54	975	1120	1085	1475	1420	1130	1440
2	1	MTW55	785	1190	1315	1200	1220	1000	1100
2	1	MTW61	480	600	500	535	545	475	600
2	1	MTW62	265	310	390	425	355	295	315
2	1	MTW64	515	720	445	745	915	720	940
2	1	MTW65	1055	1290	1315	1620	1660	1275	1415
2	1	MTW6G1	240	280	195	390	375	365	545
2	1	MTW6G2	1100	1275	1200	1470	1305	950	930
2	1	WHF41	620	745	560	700	630	760	1210
2	1	WHF42	395	540	560	715	810	645	880
2	1	WHF43	725	790	875	975	1630	960	1125
2	1	WHF44	615	780	800	850	1230	905	1015
2	1	WHF45	365	540	620	650	845	700	920
2	1	WHF51	970	1065	930	920	1415	1030	1300
2	1	WHF52	70	100	110	210	190	190	210
2	1	WHF55	200	220	220	365	450	480	580
2	1	WHF61	600	670	620	770	735	860	1185
2	1	WHF62	285	285	395	455	550	515	870
2	1	WHF63	285	430	415	435	740	590	995
2	1	WHF65	210	330	330	400	850	610	880
2	2	MAN43	955	950	660	895	1140	925	995
2	2	MAN45	630	810	600	960	750	580	525
2	2	MAN54	400	550	430	665	1030	735	760
2	2	MAN55	340	585	825	1000	1225	865	845
2	2	MTW43	180	255	545	575	590	600	450
2	2	MTW45	1555	1980	2090	1955	1980	2155	2195
2	2	MTW4G1	280	445	835	1005	1160	870	900
2	2	WHF64	1580	1810	1310	1415	2045	1675	1795
		LREL	0.86	0.87	0.83	1.01	1.01	0.93	1.12
		LNO	0.96	1.01	0.94	0.97	0.92	0.87	1.02
		HREL	0.74	0.92	0.91	1.06	1.24	1.05	1.06
		HNO	0.51	0.62	0.58	0.68	0.8	0.65	0.81
		RELEASE (N=26)	0.82	0.89	0.85	1.03	1.08	0.97	1.1
		NO-RELEASE (N=57)	0.73	0.81	0.75	0.82	0.86	0.75	0.91

Sheet3

ELEV	RELEASE(1-no, 2-yes)	TREE	1972	1971	1970	1969	1968	1967	1966
1	1	MAN11	910	1105	1055	1045	975	900	980
1	1	MAN12	780	1010	1015	1255	1540	1260	1630
1	1	MAN14	645	750	620	545	395	420	420
1	1	MAN15	545	605	465	495	415	500	520
1	1	MAN22	840	740	555	535	660	770	710
1	1	MAN23	1690	1375	1690	1480	1315	980	885
1	1	MAN24	700	660	705	640	545	560	535
1	1	MAN32	565	630	765	640	735	785	640
1	1	MAN3G1	1410	2430	2855	3215	2565	1530	1460
1	1	MTW13	1515	1835	1395	960	1310	1200	1040
1	1	MTW14	1155	1475	1125	1320	1180	970	925
1	1	MTW21	675	600	495	530	350	515	540
1	1	MTW24	595	1025	1130	1265	1720	1000	1215
1	1	MTW25	300	270	210	350	620	490	480
1	1	MTW2G3	580	605	515	450	630	690	650
1	1	MTW2G4	1240	1000	950	1080	1170	1290	1400
1	1	MTW35	600	685	610	555	380	315	285
1	1	WHF11	1005	890	915	1035	955	970	1165
1	1	WHF14	1440	1550	1445	1325	1475	1240	1385
1	1	WHF15	995	1305	1220	1135	1275	1200	1280
1	1	WHF21	2170	2565	2310	1935	1400	1910	2150
1	1	WHF22	900	810	800	650	570	630	520
1	1	WHF23	1150	1340	1215	1040	960	1075	980
1	1	WHF25	845	835	765	705	660	685	815
1	1	WHF32	1735	2230	1730	1825	1530	1800	1970
1	1	WHF34	590	710	720	640	960	1020	1170
1	1	WHF35	1090	1220	1160	1255	1350	1810	1520
1	2	MAN25	155	170	165	100	215	295	300
1	2	MAN33	1765	1905	1930	1385	1370	1625	1440
1	2	MAN34	1190	1170	1210	1060	880	710	750
1	2	MAN35	1590	1930	1860	1675	1285	1610	1710
1	2	MTW11	1165	1125	925	560	360	690	720
1	2	MTW12	930	1015	1110	1220	1690	1790	1650
1	2	MTW15	475	540	550	465	735	720	540
1	2	MTW22	2460	2320	1840	1840	2100	2660	2910
1	2	MTW23	1630	1710	1870	1705	1945	1920	2025
1	2	MTW2G1	1865	1775	1945	1990	1780	1130	1730
1	2	MTW32	850	1235	865	510	450	415	565
1	2	MTW33	320	405	255	235	195	275	270
1	2	MTW3G1	1660	1635	1440	1515	1350	1875	2310
1	2	WHF12	440	665	765	770	960	1115	1360
1	2	WHF13	1020	1645	1055	720	425	645	955
1	2	WHF24	1575	1965	1730	1530	1790	2105	2290
1	2	WHF31	1325	1530	1855	1470	2010	1815	1920
1	2	WHF33	520	515	495	460	785	1035	1180
2	1	MAN41	310	415	330	315	255	430	375
2	1	MAN42	200	230	210	160	80	190	180

Sheet3

2	1	MAN44	570	750	865	890	1010	1480	1160
2	1	MAN51	680	780	765	540	380	450	445
2	1	MAN52	260	370	300	270	320	370	400
2	1	MAN61	2030	2790	2510	2310	1060	1150	840
2	1	MAN64	935	1250	1195	1035	900	905	745
2	1	MTW51	290	255	150	105	175	165	150
2	1	MTW52	470	330	220	290	350	380	240
2	1	MTW53	615	725	640	605	415	495	505
2	1	MTW54	1795	2235	1970	1665	1565	1825	1550
2	1	MTW55	1440	1620	1325	1245	1200	1345	1155
2	1	MTW61	635	765	595	615	540	560	675
2	1	MTW62	420	450	380	425	420	465	485
2	1	MTW64	810	1025	865	665	725	880	785
2	1	MTW65	1450	1775	1515	1600	1635	1835	2030
2	1	MTW6G1	670	610	595	580	440	565	505
2	1	MTW6G2	1260	1250	1105	1210	1385	1160	1065
2	1	WHF41	1510	1970	1925	1770	1770	1535	1185
2	1	WHF42	1300	1465	1120	1365	1725	1540	1315
2	1	WHF43	1060	1585	1390	1530	1560	1795	1815
2	1	WHF44	795	1135	1010	850	845	915	690
2	1	WHF45	950	1265	880	755	720	1130	1025
2	1	WHF51	1350	1605	1350	1205	1150	1245	1410
2	1	WHF52	180	300	310	220	260	340	370
2	1	WHF55	690	695	415	560	1020	750	935
2	1	WHF61	1370	1165	940	795	650	670	580
2	1	WHF62	750	755	605	760	625	580	695
2	1	WHF63	835	1015	795	710	630	590	590
2	1	WHF65	930	1310	1120	770	780	1130	1170
2	2	MAN43	1085	1175	980	830	1025	1055	1075
2	2	MAN45	340	175	100	90	205	260	295
2	2	MAN54	750	645	565	500	240	375	280
2	2	MAN55	860	1030	1005	615	305	590	500
2	2	MTW43	565	735	495	445	625	895	1120
2	2	MTW45	2355	2545	2400	2300	2120	2010	2025
2	2	MTW4G1	785	870	760	790	865	910	925
2	2	WHF64	1670	2165	2015	2075	2095	2055	1930
		LREL	1.16	1.29	1.21	1.07	1.13	1.25	1.37
		LNO	0.99	1.12	1.05	1.03	1.02	0.98	1.01
		HREL	1.05	1.17	1.04	0.96	0.94	1.02	1.02
		HNO	0.89	1.06	0.91	0.86	0.82	0.9	0.84
		RELEASE (N=26)	1.13	1.25	1.16	1.03	1.07	1.18	1.26
		NO-RELEASE (N=57)	0.93	1.09	0.98	0.94	0.92	0.94	0.92

Sheet3

ELEV	RELEASE(1-no, 2-yes)	TREE	1965	1964	1963	1962	1961	1960	1959
1	1	MAN11	1220	1000	700	1240	1430	985	1725
1	1	MAN12	1210	990	1265	1605	1605	1455	1655
1	1	MAN14	520	515	840	1245	1780	1445	1745
1	1	MAN15	585	620	735	1105	1355	1460	1280
1	1	MAN22	645	425	340	150	255	230	755
1	1	MAN23	820	600	525	520	590	370	360
1	1	MAN24	600	680	810	710	785	575	1025
1	1	MAN32	755	695	910	1095	1270	925	1390
1	1	MAN3G1	2385	2670	3095	3165	4355	3525	3745
1	1	MTW13	1040	920	935	1270	1400	1370	935
1	1	MTW14	965	1075	1450	1785	1865	1700	1645
1	1	MTW21	720	945	960	835	870	630	720
1	1	MTW24	1160	1165	1525	1675	2115	2340	1530
1	1	MTW25	660	840	1070	910	1600	2580	1540
1	1	MTW2G3	1005	1025	1225	1135	1160	1220	835
1	1	MTW2G4	1740	2540	2530	1490	2090	2300	2300
1	1	MTW35	430	480	1215	1945	2185	3720	2010
1	1	WHF11	1390	1390	1095	1000	1070	910	1000
1	1	WHF14	1570	1565	1440	1300	1710	1500	1530
1	1	WHF15	1155	855	875	520	905	755	895
1	1	WHF21	2490	3000	2540	2210	2795	2110	2425
1	1	WHF22	530	600	440	360	670	430	580
1	1	WHF23	1070	1210	1190	810	1185	925	1160
1	1	WHF25	785	795	750	715	835	460	600
1	1	WHF32	1885	2350	2410	2235	2785	2195	2505
1	1	WHF34	1250	1560	860	660	800	290	320
1	1	WHF35	2030	2165	1905	1680	2000	1270	1400
1	2	MAN25	310	385	565	750	1170	1430	1595
1	2	MAN33	1675	1865	1870	2180	2715	2295	2505
1	2	MAN34	920	800	890	1645	1715	1435	1490
1	2	MAN35	1950	2205	2925	2675	3460	3185	3260
1	2	MTW11	855	655	660	665	1070	695	455
1	2	MTW12	2135	1760	2375	2325	2550	2655	2380
1	2	MTW15	890	1130	1300	1290	1560	1735	1665
1	2	MTW22	3300	2260	2830	2420	2690	2610	3390
1	2	MTW23	1980	1750	1745	1805	1795	1720	1325
1	2	MTW2G1	2460	2250	2640	2665	3240	3540	3110
1	2	MTW32	920	1120	1460	1230	1515	1710	1315
1	2	MTW33	360	445	820	890	1325	1385	1295
1	2	MTW3G1	2305	2855	3165	2485	3135	3260	3600
1	2	WHF12	1395	1350	1330	1300	1515	1235	1300
1	2	WHF13	1165	1420	1330	950	710	375	305
1	2	WHF24	2725	2535	2340	2145	2935	2685	2785
1	2	WHF31	2345	2575	2005	1625	1830	1555	1640
1	2	WHF33	1310	1595	1300	1090	1430	1395	1965
2	1	MAN41	495	595	775	580	780	525	655
2	1	MAN42	260	350	320	150	230	100	140

Sheet3

2	1	MAN44	1545	1660	1430	1060	1215	1080	1085
2	1	MAN51	570	730	730	730	885	780	645
2	1	MAN52	720	790	1150	1220	610	800	1110
2	1	MAN61	640	650	690	850	750	670	750
2	1	MAN64	705	935	1090	1005	1180	835	945
2	1	MTW51	145	185	185	230	280	115	265
2	1	MTW52	360	460	380	290	370	410	610
2	1	MTW53	625	860	780	820	1165	795	730
2	1	MTW54	1890	2250	2440	2260	2930	2515	2835
2	1	MTW55	1325	1250	1105	1110	1365	1445	1925
2	1	MTW61	720	1115	975	1050	1170	1145	1235
2	1	MTW62	510	555	300	330	500	610	660
2	1	MTW64	885	1135	1200	730	820	710	370
2	1	MTW65	1630	1655	1430	1415	1920	1435	1515
2	1	MTW6G1	580	745	805	765	975	940	1200
2	1	MTW6G2	1250	1260	1420	1275	1590	1525	1270
2	1	WHF41	1660	2190	1610	1785	2915	1780	2355
2	1	WHF42	1835	1965	1675	1380	2030	1615	1945
2	1	WHF43	2550	2615	2420	2035	2325	1635	2040
2	1	WHF44	1100	1585	1650	1495	1415	1305	1305
2	1	WHF45	1195	1885	1525	1485	1595	1130	1690
2	1	WHF51	1365	1770	1775	1480	1760	1660	1935
2	1	WHF52	380	440	480	340	600	550	470
2	1	WHF55	995	1480	1430	1530	1600	1130	1515
2	1	WHF61	770	995	985	1095	1210	1045	1065
2	1	WHF62	935	945	1005	975	1105	1220	1255
2	1	WHF63	660	780	920	675	690	455	705
2	1	WHF65	1380	2160	1980	1990	2430	1590	2100
2	2	MAN43	1130	1465	1320	1170	1290	1070	1080
2	2	MAN45	610	660	895	1300	1810	1505	1145
2	2	MAN54	305	565	865	1145	1150	770	930
2	2	MAN55	535	810	1225	1535	1825	2020	1925
2	2	MTW43	1395	1385	1290	1455	1665	1805	1415
2	2	MTW45	2270	2185	2730	2590	2845	2420	2330
2	2	MTW4G1	1400	1750	1975	1715	2050	1790	1440
2	2	WHF64	1515	1530	1360	1400	1785	1335	1790
		LREL	1.61	1.61	1.75	1.67	2.02	1.94	1.97
		LNO	1.13	1.21	1.25	1.24	1.54	1.4	1.39
		HREL	1.15	1.29	1.46	1.54	1.8	1.59	1.51
		HNO	0.99	1.2	1.16	1.07	1.28	1.05	1.21
		RELEASE (N=26)	1.47	1.51	1.66	1.63	1.95	1.83	1.82
		NO-RELEASE (N=57)	1.06	1.2	1.2	1.15	1.4	1.21	1.3

Sheet3

ELEV	RELEASE(1-no, 2-yes)	TREE	1958	1957	1956	1955	1954	1953	1952
1	1	MAN11	2300	2150	1795	2570	2465	2130	2540
1	1	MAN12	1540	1395	1200	1770	1380	1410	1440
1	1	MAN14	2040	2070	1705	1880	2080	1985	2035
1	1	MAN15	1500	1420	1405	2060	1535	1970	2325
1	1	MAN22	910	690	635	740	745	745	970
1	1	MAN23	665	570	390	595	665	855	630
1	1	MAN24	1585	1265	805	1480	1410	1440	1340
1	1	MAN32	1750	1130	605	1595	1445	1200	1410
1	1	MAN3G1	4230	3900	2395	3380	2980	3830	4105
1	1	MTW13	2075	1775	1615	1580	1780	1580	1585
1	1	MTW14	2455	2175	1985	1535	1810	1740	1680
1	1	MTW21	1730	1515	940	1030	1195	1210	1085
1	1	MTW24	2135	1885	1710	1560	1640	1810	1730
1	1	MTW25	2110	1710	1490	2470	1510	1730	1710
1	1	MTW2G3	2615	2035	1965	1755	2045	1730	1900
1	1	MTW2G4	5050	3220	2090	2000	1900	2630	2320
1	1	MTW35	5035	3855	3335	3230	2060	2145	2055
1	1	WHF11	1055	1150	860	1235	1095	1095	1000
1	1	WHF14	1185	965	905	1205	825	735	745
1	1	WHF15	945	830	730	1565	1240	965	1460
1	1	WHF21	2135	1615	1205	1795	1310	1970	2165
1	1	WHF22	500	420	180	270	240	170	260
1	1	WHF23	1140	815	645	985	995	1055	800
1	1	WHF25	860	620	505	1035	770	755	755
1	1	WHF32	2485	2060	1355	2240	2030	1700	2010
1	1	WHF34	250	210	0	70	70	80	110
1	1	WHF35	1535	1135	785	645	390	505	535
1	2	MAN25	1655	1480	925	1925	1840	2130	1980
1	2	MAN33	2775	2560	2080	3255	2750	2950	3000
1	2	MAN34	1485	1830	1525	1685	2045	1520	1545
1	2	MAN35	3635	3540	2405	3540	3435	3180	4065
1	2	MTW11	2535	2285	1475	1310	1565	1560	1330
1	2	MTW12	2860	3355	2395	3065	2845	2880	3020
1	2	MTW15	2610	2050	2130	1980	1940	1550	1335
1	2	MTW22	3620	2600	1930	2100	2040	1730	2060
1	2	MTW23	1845	1680	1435	1135	1250	1280	1015
1	2	MTW2G1	3875	3585	3095	3700	3035	3025	2800
1	2	MTW32	2375	2055	2050	1675	1835	1565	1515
1	2	MTW33	2040	1580	1330	1150	1415	1445	1555
1	2	MTW3G1	4580	5180	3705	4100	4195	3975	3590
1	2	WHF12	1210	910	420	695	445	290	590
1	2	WHF13	340	355	165	470	620	435	785
1	2	WHF24	3020	2935	1970	2295	2475	1725	1720
1	2	WHF31	1760	1350	1235	1680	1110	1270	920
1	2	WHF33	2275	2250	1410	2050	1580	1515	1400
2	1	MAN41	670	665	600	810	820	935	825
2	1	MAN42	190	220	150	320	230	250	160

Sheet3

2	1	MAN44	1400	1150	790	1290	950	885	905
2	1	MAN51	790	705	645	880	810	685	600
2	1	MAN52	1830	2570	820	2150	3510	3120	3400
2	1	MAN61	1000	980	530	890	830	940	840
2	1	MAN64	1165	935	750	1065	860	775	745
2	1	MTW51	865	645	465	645	460	405	335
2	1	MTW52	1040	810	690	860	690	860	1300
2	1	MTW53	1225	875	695	785	585	455	420
2	1	MTW54	4060	3395	2300	3530	3485	3120	2800
2	1	MTW55	2950	2675	2105	2465	2190	1860	2085
2	1	MTW61	1630	1590	1240	1300	1420	1170	855
2	1	MTW62	1245	1100	925	1090	780	830	950
2	1	MTW64	925	670	635	855	570	675	750
2	1	MTW65	1815	1980	1525	1720	1630	1665	1720
2	1	MTW6G1	1485	1345	1140	1455	1175	1125	1085
2	1	MTW6G2	1620	1430	1090	1255	1285	1115	1395
2	1	WHF41	3230	2550	1365	2550	2280	1535	1920
2	1	WHF42	2075	1655	1345	1960	1645	1520	2060
2	1	WHF43	1715	1160	670	1170	1095	1005	1445
2	1	WHF44	1295	950	755	930	895	1115	1125
2	1	WHF45	1620	1290	1030	1915	1400	1290	1805
2	1	WHF51	1625	1335	1140	1765	1220	1170	1465
2	1	WHF52	640	650	570	820	780	650	720
2	1	WHF55	1555	1240	770	1365	1375	1060	1435
2	1	WHF61	1000	805	595	1295	1095	805	1005
2	1	WHF62	995	830	815	1330	1105	1035	1150
2	1	WHF63	790	485	455	915	750	605	845
2	1	WHF65	1300	1210	740	1310	1000	1030	960
2	2	MAN43	1390	1115	850	1065	1010	920	1240
2	2	MAN45	1185	955	635	1125	1295	1000	605
2	2	MAN54	1090	1065	925	1580	1445	1665	2010
2	2	MAN55	2270	1775	1585	2760	1870	2125	2060
2	2	MTW43	1710	1510	1350	1470	1350	1310	1080
2	2	MTW45	2705	2350	2160	2610	2190	1900	1945
2	2	MTW4G1	2055	2140	2075	2600	1680	1625	2140
2	2	WHF64	1435	1355	850	1025	1280	970	865
		LREL	2.47	2.31	1.76	2.1	2.02	1.89	1.9
		LNO	1.92	1.58	1.23	1.57	1.39	1.45	1.51
		HREL	1.73	1.53	1.3	1.78	1.52	1.44	1.49
		HNO	1.46	1.26	0.91	1.36	1.23	1.12	1.24
		RELEASE (N=26)	2.24	2.07	1.62	2	1.87	1.75	1.78
		NO-RELEASE (N=57)	1.68	1.41	1.06	1.46	1.31	1.28	1.37

Sheet3

ELEV	RELEASE(1-no, 2-yes)	TREE	1951	1950	1949	1948	1947	1946	1945
1	1	MAN11	2035	1645	2115	775	2555	1715	1985
1	1	MAN12	1230	1095	1775	820	1360	1345	1700
1	1	MAN14	1885	1440	1730	665	1145	1470	1695
1	1	MAN15	1505	1360	1605	1060	1340	1365	1695
1	1	MAN22	865	500	565	315	685	1230	1055
1	1	MAN23	615	520	700	135	510	530	570
1	1	MAN24	1105	940	1625	1055	1785	1860	1985
1	1	MAN32	1275	1105	1160	640	1330	1535	1510
1	1	MAN3G1	4225	3605	3620	3000	3700	3405	3180
1	1	MTW13	1960	1820	1615	1210	1570	1560	1595
1	1	MTW14	2085	1765	1765	1520	1680	1740	1665
1	1	MTW21	745	715	735	445	1190	1120	1110
1	1	MTW24	2000	1585	1655	870	1625	1675	2095
1	1	MTW25	1820	1520	1870	1450	2280	2040	1840
1	1	MTW2G3	1290	1620	1485	1085	1680	1340	1760
1	1	MTW2G4	1160	2060	2090	1820	2510	2340	2520
1	1	MTW35	2130	1700	1945	1415	2715	2235	2840
1	1	WHF11	1155	850	925	830	935	995	910
1	1	WHF14	560	755	925	460	470	695	565
1	1	WHF15	1590	1230	1155	495	1470	1655	1500
1	1	WHF21	1480	1020	1365	1165	1925	2160	2145
1	1	WHF22	450	260	270	40	220	320	260
1	1	WHF23	950	1420	1805	1635	1850	1775	1715
1	1	WHF25	650	495	610	310	525	510	490
1	1	WHF32	1920	1235	1535	1435	1895	1850	1910
1	1	WHF34	90	360	410	230	420	300	270
1	1	WHF35	700	465	515	255	910	690	460
1	2	MAN25	1380	865	1490	580	1090	1275	1330
1	2	MAN33	2255	1820	2265	985	1845	1510	1430
1	2	MAN34	1545	1280	1635	1240	1085	1245	1270
1	2	MAN35	3720	3590	3120	2770	2935	2850	2900
1	2	MTW11	1015	635	780	400	500	335	260
1	2	MTW12	2915	2420	2200	1980	1930	1970	2545
1	2	MTW15	1730	1990	2195	1725	1920	1710	2330
1	2	MTW22	2050	1720	1970	630	1680	1700	1400
1	2	MTW23	1020	950	870	570	825	795	800
1	2	MTW2G1	3115	2545	2295	1930	2525	2315	2470
1	2	MTW32	1520	1090	1000	395	685	470	560
1	2	MTW33	1505	1320	1135	930	1330	1215	1065
1	2	MTW3G1	4145	3225	3070	1960	2425	2260	2650
1	2	WHF12	1355	1205	985	815	1210	835	705
1	2	WHF13	510	135	265	0	135	190	170
1	2	WHF24	1810	1420	1260	1050	1470	1665	1765
1	2	WHF31	945	680	685	490	1120	1255	1120
1	2	WHF33	1955	855	930	795	830	900	840
2	1	MAN41	705	920	1045	445	755	780	740
2	1	MAN42	170	80	160	70	140	110	60

Sheet3

2	1	MAN44	630	555	720	465	800	760	770
2	1	MAN51	520	425	675	380	615	525	380
2	1	MAN52	3370	2610	4360	3490	3670	2730	670
2	1	MAN61	750	630	730	550	600	660	690
2	1	MAN64	755	765	985	565	750	720	480
2	1	MTW51	255	180	235	95	205	315	675
2	1	MTW52	1290	910	880	700	860	850	1150
2	1	MTW53	350	400	480	305	810	805	1005
2	1	MTW54	3475	3380	3365	2610	3285	2180	2605
2	1	MTW55	2050	1730	1555	1725	2395	1655	1850
2	1	MTW61	1145	1440	1775	1335	2015	1905	2560
2	1	MTW62	1170	1090	990	615	880	780	1005
2	1	MTW64	425	260	690	250	480	565	220
2	1	MTW65	1630	1155	1225	965	1290	1190	990
2	1	MTW6G1	1065	1085	1160	945	1145	975	730
2	1	MTW6G2	1530	1280	1470	890	1380	1070	1395
2	1	WHF41	2070	1530	1840	1070	1800	1990	1865
2	1	WHF42	2135	1375	1485	1420	2550	2310	2475
2	1	WHF43	1585	1360	1740	1125	1245	1375	1640
2	1	WHF44	920	745	890	425	545	725	605
2	1	WHF45	1830	1565	1600	1180	1530	2020	2595
2	1	WHF51	1375	1175	1335	820	1095	950	910
2	1	WHF52	840	910	940	580	820	940	950
2	1	WHF55	1855	1500	1855	1175	1875	1915	1675
2	1	WHF61	1285	1110	1095	835	895	745	680
2	1	WHF62	1330	1300	1280	815	1195	1095	1155
2	1	WHF63	905	775	940	560	865	820	715
2	1	WHF65	950	940	840	670	1150	910	640
2	2	MAN43	1470	1235	1565	640	845	690	420
2	2	MAN45	655	435	760	475	780	815	500
2	2	MAN54	1790	1800	2055	1470	1725	1415	1185
2	2	MAN55	1940	1605	1990	1275	2000	1520	1325
2	2	MTW43	970	795	1100	1000	1300	1055	1170
2	2	MTW45	1960	1610	1630	1385	2075	1890	1660
2	2	MTW4G1	2225	1730	2185	1655	1975	2250	1445
2	2	WHF64	1070	840	945	410	840	900	695
		LREL	1.92	1.54	1.56	1.07	1.42	1.36	1.42
		LNO	1.39	1.23	1.39	0.93	1.49	1.46	1.52
		HREL	1.51	1.26	1.53	1.04	1.44	1.32	1.05
		HNO	1.28	1.11	1.28	0.9	1.25	1.15	1.13
		RELEASE (N=26)	1.79	1.45	1.55	1.06	1.43	1.35	1.31
		NO-RELEASE (N=57)	1.33	1.16	1.33	0.92	1.37	1.3	1.31

Sheet3

ELEV	RELEASE(1-no, 2-yes)	TREE	1944	1943	1942	1941	1940	1939	1938
1	1	MAN11	1915	1940	1890	2305	1535	2145	2520
1	1	MAN12	1560	1145	1325	1640	1100	1370	1390
1	1	MAN14	1345	1350	1425	1595	1125	1780	1940
1	1	MAN15	1635	1050	1270	1820	1515	2290	1770
1	1	MAN22	705	490	685	705	455	575	485
1	1	MAN23	625	600	755	605	425	605	700
1	1	MAN24	1790	1295	1210	1490	905	1505	1180
1	1	MAN32	1190	1485	1250	1735	1000	1355	1435
1	1	MAN3G1	3040	2705	3735	2855	1940	1745	2665
1	1	MTW13	1255	1835	1670	1640	1305	1280	1670
1	1	MTW14	1050	1245	1435	1680	1370	1485	1560
1	1	MTW21	1185	1115	1450	1420	1245	1620	1010
1	1	MTW24	1630	1620	1585	2180	1460	1940	1040
1	1	MTW25	1600	1120	1230	1360	1820	2540	1380
1	1	MTW2G3	1265	1270	1530	1115	1200	1605	1650
1	1	MTW2G4	1960	2180	2520	1650	1600	1640	1260
1	1	MTW35	2830	2575	2110	3105	2435	1805	1190
1	1	WHF11	880	875	960	965	655	810	795
1	1	WHF14	470	430	510	775	495	735	670
1	1	WHF15	1130	890	980	1220	860	1220	1260
1	1	WHF21	1720	1345	1760	1975	1450	1680	1880
1	1	WHF22	240	180	170	260	110	200	150
1	1	WHF23	1195	945	990	1465	1135	1535	1365
1	1	WHF25	400	370	435	640	445	580	650
1	1	WHF32	1610	1560	1550	2315	1745	1995	1880
1	1	WHF34	280	300	480	650	430	610	670
1	1	WHF35	410	530	615	410	215	205	185
1	2	MAN25	1035	765	650	780	555	1170	975
1	2	MAN33	1515	1020	940	900	725	1070	1305
1	2	MAN34	1080	810	970	985	780	820	880
1	2	MAN35	2110	1430	1790	1320	695	825	1765
1	2	MTW11	230	120	140	135	90	270	315
1	2	MTW12	1575	1555	1305	1690	1415	1365	1570
1	2	MTW15	2020	2890	3195	3255	2545	2335	1685
1	2	MTW22	1450	1230	1010	270	180	250	520
1	2	MTW23	535	615	600	570	460	455	625
1	2	MTW2G1	2285	2365	1845	1950	2310	2430	2475
1	2	MTW32	645	630	475	230	115	170	105
1	2	MTW33	590	480	345	320	555	995	435
1	2	MTW3G1	1980	1950	2170	1780	905	520	660
1	2	WHF12	670	510	520	605	445	460	635
1	2	WHF13	155	165	365	440	295	410	345
1	2	WHF24	1540	1115	1195	980	600	380	270
1	2	WHF31	1035	910	1220	1290	930	1005	975
1	2	WHF33	725	610	580	920	690	770	900
2	1	MAN41	780	795	835	940	575	750	895
2	1	MAN42	50	60	50	190	190	30	90

Sheet3

2	1	MAN44	715	760	670	965	570	975	720
2	1	MAN51	460	495	530	685	415	615	745
2	1	MAN52	840	970	1570	2120	2940	2540	3380
2	1	MAN61	1100	1100	900	1700	1480	920	510
2	1	MAN64	495	525	525	555	415	575	675
2	1	MTW51	470	435	460	800	710	1015	940
2	1	MTW52	860	1040	1270	1440	1050	1110	1220
2	1	MTW53	655	320	225	315	200	450	935
2	1	MTW54	2330	1995	1285	1670	1300	2340	2310
2	1	MTW55	1535	1365	1105	1155	1180	1600	1940
2	1	MTW61	2070	2270	2335	2460	1705	2240	1710
2	1	MTW62	810	1050	655	870	675	820	820
2	1	MTW64	400	335	750	660	305	490	380
2	1	MTW65	1240	1020	1075	1290	880	930	970
2	1	MTW6G1	905	805	835	855	695	820	785
2	1	MTW6G2	1480	1425	1575	1750	1405	1700	1545
2	1	WHF41	1800	1795	1625	1995	1515	2285	2295
2	1	WHF42	1880	1915	1795	1515	985	1610	1220
2	1	WHF43	1205	1340	1355	1735	1185	1995	1660
2	1	WHF44	595	595	765	1090	605	745	785
2	1	WHF45	2330	1775	2125	2165	1210	1880	2045
2	1	WHF51	890	775	960	1075	710	870	855
2	1	WHF52	880	690	930	1120	730	930	920
2	1	WHF55	1500	1410	1270	1650	1315	1895	1700
2	1	WHF61	860	915	955	945	730	785	530
2	1	WHF62	1075	1020	1120	1270	925	1070	915
2	1	WHF63	880	860	695	680	555	700	545
2	1	WHF65	730	810	1480	1800	920	1710	1830
2	2	MAN43	345	365	330	545	360	555	545
2	2	MAN45	380	230	185	255	235	355	355
2	2	MAN54	965	1120	1045	1110	785	1310	1285
2	2	MAN55	1555	1670	1510	1615	870	1560	1420
2	2	MTW43	1275	1255	1300	935	680	525	435
2	2	MTW45	1510	1340	1190	795	455	305	325
2	2	MTW4G1	1245	910	495	255	50	190	660
2	2	WHF64	530	500	455	425	230	235	180
		LREL	1.18	1.07	1.07	1.02	0.79	0.87	0.91
		LNO	1.29	1.2	1.32	1.47	1.11	1.37	1.27
		HREL	0.98	0.92	0.81	0.74	0.46	0.63	0.65
		HNO	1.06	1.02	1.06	1.25	0.94	1.21	1.2
		RELEASE (N=26)	1.11	1.02	0.99	0.94	0.69	0.8	0.83
		NO-RELEASE (N=57)	1.17	1.11	1.18	1.35	1.02	1.29	1.23

Sheet3

ELEV	RELEASE(1-no, 2-yes)	TREE	1937	1936	1935	1934	1933	1932	1931
1	1	MAN11	1570	1795	1550	2540	2170	2600	2375
1	1	MAN12	1045	930	1035	1720	1795	1875	1745
1	1	MAN14	1550	1625	1205	2660	2035	2625	2435
1	1	MAN15	1635	1535	1415	1880	1790	1605	1990
1	1	MAN22	385	640	830	590	565	970	940
1	1	MAN23	535	625	455	445	480	505	520
1	1	MAN24	1000	1105	1185	1650	2015	2115	2285
1	1	MAN32	1010	1120	820	1645	1390	1580	2010
1	1	MAN3G1	1505	1220	1110	2050	1925	1980	1610
1	1	MTW13	1465	1245	1780	1995	2255	2110	1565
1	1	MTW14	1270	1305	1275	1130	1465	1825	1850
1	1	MTW21	860	815	1195	1575	1495	1845	1690
1	1	MTW24	1415	1385	1045	1455	1645	2110	1530
1	1	MTW25	780	710	660	1100	1490	2300	2450
1	1	MTW2G3	1485	1440	1710	1750	1590	1905	1660
1	1	MTW2G4	1550	2370	2030	2470	1530	2260	1990
1	1	MTW35	715	800	1370	1790	1800	2875	1900
1	1	WHF11	625	800	730	765	850	970	1015
1	1	WHF14	515	675	550	925	835	1240	1195
1	1	WHF15	855	920	815	2015	1455	1550	1560
1	1	WHF21	1725	1335	1185	2575	2200	2655	3115
1	1	WHF22	40	130	30	260	230	410	590
1	1	WHF23	1200	1290	1240	1380	1675	1900	2090
1	1	WHF25	530	560	570	810	835	820	810
1	1	WHF32	1980	1835	2045	2355	2365	2870	2395
1	1	WHF34	600	620	850	1030	990	1240	1280
1	1	WHF35	185	280	295	330	395	475	505
1	2	MAN25	645	760	1140	1320	1420	1370	1660
1	2	MAN33	705	915	625	1110	1020	1135	1180
1	2	MAN34	505	585	510	805	790	985	810
1	2	MAN35	980	1350	1050	2075	1725	2425	2250
1	2	MTW11	115	295	795	1015	835	1390	1080
1	2	MTW12	1220	1505	1220	1300	1540	1600	1370
1	2	MTW15	1365	1690	1120	1300	1235	1455	1440
1	2	MTW22	390	800	790	1230	880	1050	870
1	2	MTW23	495	625	465	540	485	540	495
1	2	MTW2G1	1910	1590	1635	1895	1900	2140	2150
1	2	MTW32	70	120	160	250	560	685	690
1	2	MTW33	225	295	420	485	690	1045	950
1	2	MTW3G1	495	230	140	140	145	145	120
1	2	WHF12	430	435	450	395	360	520	580
1	2	WHF13	240	415	380	655	680	525	560
1	2	WHF24	315	305	310	410	375	385	390
1	2	WHF31	530	720	550	1405	865	1510	1670
1	2	WHF33	515	570	415	725	610	540	555
2	1	MAN41	640	705	680	1195	1160	1585	2070
2	1	MAN42	110	130	130	200	150	180	200

Sheet3

2	1	MAN44	575	495	435	810	785	905	1210
2	1	MAN51	530	505	340	635	650	740	1075
2	1	MAN52	2600	1910	1100	1300	880	630	1170
2	1	MAN61	460	520	530	1070	1180	1310	2180
2	1	MAN64	520	515	470	475	505	545	605
2	1	MTW51	850	935	1060	1775	1745	1870	1540
2	1	MTW52	1440	1040	900	1420	960	1090	930
2	1	MTW53	985	1035	950	1520	1360	1825	1340
2	1	MTW54	2505	1890	2060	2830	2395	2500	2160
2	1	MTW55	2420	2040	2085	2665	2395	2195	2145
2	1	MTW61	1805	1970	1930	2785	2695	3290	3050
2	1	MTW62	780	730	640	855	875	1925	1625
2	1	MTW64	390	160	240	600	505	480	835
2	1	MTW65	950	1005	735	1240	995	1190	1305
2	1	MTW6G1	795	680	680	1055	905	990	1270
2	1	MTW6G2	1795	1520	1555	1880	1705	1855	1870
2	1	WHF41	2325	2105	2025	2260	2215	2560	2625
2	1	WHF42	1230	1225	1305	1825	1685	1835	1695
2	1	WHF43	1800	1915	1565	2365	2335	2285	2780
2	1	WHF44	795	645	605	975	795	1125	1365
2	1	WHF45	1855	1375	1515	2675	2575	2960	3285
2	1	WHF51	895	710	845	795	970	870	980
2	1	WHF52	820	500	530	800	800	700	730
2	1	WHF55	1440	1500	1165	1915	1335	1345	1565
2	1	WHF61	530	500	550	650	635	575	495
2	1	WHF62	875	775	895	1160	1045	1295	1300
2	1	WHF63	655	555	535	855	515	605	790
2	1	WHF65	1650	1160	1250	1370	1260	1150	880
2	2	MAN43	365	315	260	670	485	590	810
2	2	MAN45	285	375	240	485	825	965	1175
2	2	MAN54	1155	1075	925	1590	1235	1315	1080
2	2	MAN55	1235	1070	660	1890	1790	1685	1515
2	2	MTW43	450	545	410	415	285	475	405
2	2	MTW45	385	295	410	660	795	915	965
2	2	MTW4G1	775	670	620	670	530	690	590
2	2	WHF64	100	100	85	70	50	60	55
		LREL	0.62	0.73	0.68	0.95	0.9	1.08	1.05
		LNO	1.04	1.08	1.07	1.51	1.45	1.75	1.67
		HREL	0.59	0.56	0.45	0.81	0.75	0.84	0.82
		HNO	1.17	1.03	0.98	1.4	1.27	1.41	1.5
		RELEASE (N=26)	0.61	0.68	0.61	0.9	0.85	1.01	0.98
		NO-RELEASE (N=57)	1.11	1.05	1.02	1.45	1.36	1.57	1.58

Sheet3

ELEV	RELEASE(1-no, 2-yes)	TREE	1930	1929	1928	1927	1926	1925	1924
1	1	MAN11	1675	1415	2035	2335	2295	2615	2270
1	1	MAN12	1490	1295	1585	1710	1875	1430	2240
1	1	MAN14	1775	1960	1900	2825	2755	2685	3410
1	1	MAN15	1515	1610	1480	1355	1335	1200	1680
1	1	MAN22	1115	1300	1140	1315	1600	1200	1485
1	1	MAN23	485	475	555	610	520	485	705
1	1	MAN24	2195	1925	2135	2100	1970	1730	1860
1	1	MAN32	1510	860	1195	1030	1220	815	1930
1	1	MAN3G1	1400	1380	1050	1630	1140	1800	
1	1	MTW13	1500	1845	1600	1655	1665	2080	2075
1	1	MTW14	1390	1680	1405	1880	1615	1990	2105
1	1	MTW21	1335	1275	1645	1365	980	1025	1455
1	1	MTW24	1505	1680	1720	1590	1465	1565	1980
1	1	MTW25	2130	2010	1920	2050	2360	2640	3100
1	1	MTW2G3	1545	1650	1420	1630	1605	2015	1995
1	1	MTW2G4	2060	1620	1750	2030	1590	1400	1600
1	1	MTW35	2045	2080	1840	2105	1780	1430	
1	1	WHF11	1045	1030	1155	1235	1185	1120	1365
1	1	WHF14	1115	1105	1160	1170	1290	965	1540
1	1	WHF15	1775	1630	2200	1955	2105	1380	2185
1	1	WHF21	2720	2135	2490	2620	2220	1645	2675
1	1	WHF22	370	340	500	480	560	530	620
1	1	WHF23	1700	1515	1845	1770	1630	1320	1900
1	1	WHF25	720	840	1090	1080	1105	840	1050
1	1	WHF32	2220	1955	2585	2420	2600	2095	2625
1	1	WHF34	1240	1490	1890	1990	1900	1260	1670
1	1	WHF35	525	455	485	435	535	400	390
1	2	MAN25	1315	1340	1765	2050	2210	2100	2360
1	2	MAN33	1355	1240	1570	1645	1755	1690	2245
1	2	MAN34	820	865	875	1020	1080	970	1015
1	2	MAN35	2560	2385	2285	2480	2785	2560	2865
1	2	MTW11	830	1105	1170	1310	980	1225	1485
1	2	MTW12	1440	1570	1180	1430	1460	1470	1720
1	2	MTW15	1340	1365	1225	1440	1400	1580	1460
1	2	MTW22	910	850	1080	1150	1020	1200	1070
1	2	MTW23	555	515	765	905	680	790	815
1	2	MTW2G1	1810	1615	1640	2190	2020	2155	2550
1	2	MTW32	885	875	1150	1140	1130	1595	1950
1	2	MTW33	1020	930	1115	1140	775	765	1165
1	2	MTW3G1	105	90	95	165	100	240	385
1	2	WHF12	620	690	715	630	745	740	940
1	2	WHF13	480	420	555	450	585	360	665
1	2	WHF24	365	385	585	505	385	415	730
1	2	WHF31	1460	1770	2125	2045	1975	1075	2050
1	2	WHF33	650	600	610	625	595	670	825
2	1	MAN41	1715	1495	1440	1300	1180	1125	1655
2	1	MAN42	120	100	150	130	130	130	210

Sheet3

2	1	MAN44	970	725	885	1000	1030	970	1665
2	1	MAN51	835	555	595	655	615	615	805
2	1	MAN52	680	750	1280	1140	430	260	390
2	1	MAN61	930	830	1530	1230	1640	700	1130
2	1	MAN64	505	535	565	585	465	410	545
2	1	MTW51	1825	1480	1275	1190	1060	1050	1325
2	1	MTW52	830	660	700	640	590	540	950
2	1	MTW53	815	895	750	845	805	860	1345
2	1	MTW54	1640	1145	1930	2100	1700	1830	1690
2	1	MTW55	2450	2080	1995	1895	1830	1815	2145
2	1	MTW61	2785	2290	2455	2805	2270	2810	3105
2	1	MTW62	1385	1230	1150	1360	1160	1365	1330
2	1	MTW64	520	605	410	595	750	470	1160
2	1	MTW65	1280	980	1090	860	780	960	1020
2	1	MTW6G1	895	600	735	695	590	540	810
2	1	MTW6G2	2275	1450	1525	1815	1430	1995	2305
2	1	WHF41	2845	2555	2305	1385	1930	1510	1330
2	1	WHF42	1825	1645	2125	1880	1645	1235	1625
2	1	WHF43	3050	2460	2255	1915	1730	1695	1570
2	1	WHF44	1320	1255	1365	1515	1270	1085	1395
2	1	WHF45	2300	2000	2595	2215	2160	1820	2410
2	1	WHF51	855	750	775	720	640	380	795
2	1	WHF52	580	550	460	380	330	320	580
2	1	WHF55	1245	1020	1125	945	780	785	1020
2	1	WHF61	340	315	355	360	445	420	595
2	1	WHF62	1120	995	1220	780	675	805	1165
2	1	WHF63	640	515	620	540	515	575	990
2	1	WHF65	530	400	600	450	410	460	500
2	2	MAN43	605	290	340	430	480	400	880
2	2	MAN45	970	750	685	705	875	905	945
2	2	MAN54	855	725	640	695	760	595	985
2	2	MAN55	915	565	405	430	580	705	990
2	2	MTW43	395	475	475	455	360	340	425
2	2	MTW45	935	750	945	965	980	1125	1205
2	2	MTW4G1	525	630	620	675	590	600	700
2	2	WHF64	60	50	45	40	70	55	110
		LREL	1.03	1.03	1.14	1.24	1.2	1.2	1.46
		LNO	1.49	1.43	1.55	1.64	1.59	1.47	1.84
		HREL	0.66	0.53	0.52	0.55	0.59	0.59	0.78
		HNO	1.3	1.1	1.21	1.13	1.03	0.98	1.25
		RELEASE (N=26)	0.91	0.88	0.95	1.03	1.01	1.01	1.25
		NO-RELEASE (N=57)	1.39	1.25	1.37	1.37	1.3	1.21	1.52

Sheet3

ELEV	RELEASE(1-no, 2-yes)	TREE	1923	1922	1921	1920	1919	1918	1917
1	1	MAN11	1675	1755	1435	1165	1285	930	1075
1	1	MAN12	1595	1275	970	885	1215	930	1370
1	1	MAN14	3005	3090	2035	1490	1265	720	570
1	1	MAN15	990	1375	1535	1435	1500	1340	1965
1	1	MAN22	940	765	565	630	640	595	475
1	1	MAN23	485	565	545	410	430	390	595
1	1	MAN24	1275	1435	1540	1075	1445	1310	1630
1	1	MAN32	1350	1715	1380	1435	1415	1395	1455
1	1	MAN3G1							
1	1	MTW13	2025	2375	2220	1330	1020		
1	1	MTW14	2175	2625	2370	1970	1210	880	
1	1	MTW21	965	1370	1195	1320	1130	960	1585
1	1	MTW24	1645	1550	2100	1600	1940	2360	830
1	1	MTW25	2380	2290	2430	1720	2100	2750	2730
1	1	MTW2G3	1530	1625	1710	1915	2250	2890	2120
1	1	MTW2G4	1260	1500	2150	2470	2380	2020	2140
1	1	MTW35							
1	1	WHF11	1015	1165	1785	1470	1520	1420	1950
1	1	WHF14	1055	1435	1460	1435	1270	985	1720
1	1	WHF15	1745	1725	1730	1550	1590	1615	1605
1	1	WHF21	1930	2575	2530	2290	2430	2200	2425
1	1	WHF22	510	480	410	450	380	280	420
1	1	WHF23	1290	1425	1445	1745	1690	1420	1385
1	1	WHF25	780	955	1050	845	855	755	1155
1	1	WHF32	1770	1995	1905	1745	1600	1185	1265
1	1	WHF34	1190	1270	1740	2090	1890	1840	1680
1	1	WHF35	210	325	405	380	475	460	690
1	2	MAN25	1940	2535	1825	1135	715	550	900
1	2	MAN33	1360	1325	1600	1565	1205	970	1060
1	2	MAN34	770	840	845	675	570	750	425
1	2	MAN35	1925	2250	2180				
1	2	MTW11	1180	1145	1455	1665	1700	1485	1295
1	2	MTW12	1690						
1	2	MTW15	1340	1550	980	740			
1	2	MTW22	720	650	540	460	370	390	430
1	2	MTW23	535	700	945	885	685	705	695
1	2	MTW2G1	1700	1705	1935	1670	1615	2260	1725
1	2	MTW32	1720	1830	2350	2030	1850	1520	1565
1	2	MTW33	1000	805	1035	1060	1170	1170	1085
1	2	MTW3G1	315	375	530	680	500	670	520
1	2	WHF12	645	840	715	810	1185	1075	1220
1	2	WHF13	540	710	820	895	830	585	880
1	2	WHF24	360	540	550	590	720	600	815
1	2	WHF31	1120	1970	1845	1810	1350	1600	2080
1	2	WHF33	685	780	950	955	1025	1160	985
2	1	MAN41	1115	745	1475	1570	1445	995	885
2	1	MAN42	90	160	170	140	160	90	90

Sheet3

2	1	MAN44	1425	1720	2020	2110	2250	1490	1190
2	1	MAN51	625	520	635	440	330	245	355
2	1	MAN52	340	390	380	300	390	230	220
2	1	MAN61	1200	1280	1160	1450			
2	1	MAN64	385	430	440	490	510	265	400
2	1	MTW51	1010	980	1080	805	820	600	520
2	1	MTW52	800	960	1410	1170	110	50	70
2	1	MTW53	950	680	775	735	640	510	490
2	1	MTW54	1050	1050	780	1100	1180	1400	630
2	1	MTW55	1500	1465	1190	1300	940	990	765
2	1	MTW61	2125	2025	2145	1950	1410	1605	1045
2	1	MTW62	660	770	1135	1185	885	1015	1010
2	1	MTW64	900	970	920	935	915	370	645
2	1	MTW65	990	880					
2	1	MTW6G1	455	415	490	610	540	295	410
2	1	MTW6G2	1315	1595	1605	1155	1200	760	710
2	1	WHF41	1090	1250	1090				
2	1	WHF42	1220	1020	1500	1815	1740	1355	1385
2	1	WHF43	1220	1605	1650	1060	2300	1665	1765
2	1	WHF44	1175	1365	1375	1510	1605	1610	1960
2	1	WHF45	1925	2370	2160	2350	2040	1265	2570
2	1	WHF51	610	705	670	805	660	315	420
2	1	WHF52	490	390	290	300	270	250	270
2	1	WHF55	750	635	665	660	605	525	555
2	1	WHF61	535	470	485	525	410	200	325
2	1	WHF62	1160	1165	1030	1020	1055	430	975
2	1	WHF63	720	570	625	580	595	200	395
2	1	WHF65	340	230	380	240	170	160	410
2	2	MAN43	660	435	525	630	575	540	450
2	2	MAN45	490	375	475	380	245	220	445
2	2	MAN54	735	685	650	570	555	295	415
2	2	MAN55	1400	1140	1355	800	1100	740	1185
2	2	MTW43	330	255	270	185	170	90	55
2	2	MTW45	895	1095	965	750	990	860	795
2	2	MTW4G1	495	460	540	405	410	300	265
2	2	WHF64	70	65	90	80	115	35	55
		LREL	1.09	1.21	1.24	1.1	1.03	1.03	1.05
		LNO	1.39	1.55	1.55	1.39	1.4	1.32	1.43
		HREL	0.63	0.56	0.61	0.48	0.52	0.39	0.46
		HNO	0.94	0.96	1.03	1.01	0.93	0.7	0.76
		RELEASE (N=26)	0.95	1	1.04	0.89	0.85	0.81	0.84
		NO-RELEASE (N=57)	1.14	1.23	1.27	1.19	1.16	0.99	1.07

Sheet3

ELEV	RELEASE(1-no, 2-yes)	TREE	1916	1915	1914	1913	1912	1911	1910
1	1	MAN11	1610	1730	1550	1940	1705	1255	1940
1	1	MAN12	2130	1865	1970	2030	2180	1790	2960
1	1	MAN14	600	830	785	1325	1220	795	1320
1	1	MAN15	2350	1880	2210	2100	2085	2540	2185
1	1	MAN22	425	400	435	520	345	215	305
1	1	MAN23	780	705	795	965	780	670	930
1	1	MAN24	1820	1595	1945	2070	1955	2325	2315
1	1	MAN32	2300	2320	2125	2655	2120	2030	2730
1	1	MAN3G1							
1	1	MTW13							
1	1	MTW14							
1	1	MTW21	1790	1540	1250	1715	1460	1625	1510
1	1	MTW24	1510	1410	1190	1500	1330	1030	1680
1	1	MTW25	2710	2630	2100	2120	2920	3830	
1	1	MTW2G3	2175	2520	2710	2470	1950	1810	1790
1	1	MTW2G4	3470	3210	2820	3240	2580	1430	1930
1	1	MTW35							
1	1	WHF11	2405	2335	2320	2415	2205	2120	2630
1	1	WHF14	1845	1865	1650	1915	1975	1600	2015
1	1	WHF15	2035	1875	1790	1840	1635	1575	1645
1	1	WHF21	2985	2550	2825	2865	2715	2335	2465
1	1	WHF22	600	590	700	1020	910	620	780
1	1	WHF23	1650	1460	1555	1435	1510	1195	1610
1	1	WHF25	1495	1235	1490	1535	1810	1445	1820
1	1	WHF32	2125	1815	1790	1760	1630	1365	1910
1	1	WHF34	2130	1510	1340	1260	1180	860	1230
1	1	WHF35	935	795	750	860	795	690	1200
1	2	MAN25	2645	2530	2610	2465	2390	2035	2165
1	2	MAN33	1270	1370	1210	1305	975	765	1080
1	2	MAN34	400	290	370	390	600	550	630
1	2	MAN35							
1	2	MTW11	1775	1565	1460	1910	1910	1650	1950
1	2	MTW12							
1	2	MTW15							
1	2	MTW22	750	850	1020	1360	1260	940	960
1	2	MTW23	890	850	790	925	630	515	685
1	2	MTW2G1	1730	2125	1910	2110	1620	1280	1880
1	2	MTW32	1530	1600	1870	2420	2970	2580	2550
1	2	MTW33	1310	1145	1245	1160	1300	1045	1240
1	2	MTW3G1	850	1130	1450	1280	1120	810	1300
1	2	WHF12	1390	1225	1430	1415	1540	1315	1690
1	2	WHF13	1230	1090	1340	1555	1525	1275	1685
1	2	WHF24	1040	1010	880	1020	900	785	915
1	2	WHF31	2625	2000	1635	2435	2125	2210	2015
1	2	WHF33	1060	955	980	1250	930	820	770
2	1	MAN41	705	780	835	855	765	735	820
2	1	MAN42	340	480	430	450	360	410	540

Sheet3

2	1	MAN44	1830	1710	2045	2370	1580	1280	1370
2	1	MAN51	400	380	320	330	360	230	395
2	1	MAN52	400	380	120	260	250	210	470
2	1	MAN61							
2	1	MAN64	350	385	420	395	485	315	385
2	1	MTW51	720	220	120	230	160	140	130
2	1	MTW52	130	190	210	140	90	90	60
2	1	MTW53	920	805	745	1020	670	610	840
2	1	MTW54							
2	1	MTW55	805	575	575	840	710	600	785
2	1	MTW61	875	740	720	1060	1070	890	630
2	1	MTW62	1810	1770	2125	2010	2270	1960	1070
2	1	MTW64	1360	1220	1060	1080	775	690	1085
2	1	MTW65							
2	1	MTW6G1	525	520	475	475	385	405	400
2	1	MTW6G2	950	480					
2	1	WHF41							
2	1	WHF42	1370	1320	1525	1765	1270	905	995
2	1	WHF43	2165	2485	2670	2820	2660	2050	2265
2	1	WHF44	2320	2345	3045	2530	2460	1945	2205
2	1	WHF45	3255	3270	3205	3425	3000	3155	2775
2	1	WHF51	675	545	590	595	475	670	845
2	1	WHF52	360	350	290	270	220	260	200
2	1	WHF55	625	550	645	585	520	585	665
2	1	WHF61	365	305	350	265	395	245	305
2	1	WHF62	1135	1045	1030	910	880	1075	1115
2	1	WHF63	775	650	770	700	820	750	850
2	1	WHF65	750	570	450	460	390	310	490
2	2	MAN43	560	505	535	525	465	445	350
2	2	MAN45	335	240	345	290	140	105	80
2	2	MAN54	605	1070	1400	1255	1185	950	1060
2	2	MAN55	1770	2115	2620	2940	1940	2005	1900
2	2	MTW43	90	65	40	70	75	55	70
2	2	MTW45	1385	1090	1015	1410	900	1010	1120
2	2	MTW4G1	330	315	340	555	395	340	435
2	2	WHF64	65	80	65	75	70	45	50
		LREL	1.37	1.32	1.35	1.53	1.45	1.24	1.43
		LNO	1.82	1.68	1.66	1.81	1.7	1.53	1.77
		HREL	0.64	0.69	0.8	0.89	0.65	0.62	0.63
		HNO	1	0.93	0.99	1.03	0.92	0.82	0.87
		RELEASE (N=26)	1.11	1.1	1.15	1.31	1.17	1.02	1.16
		NO-RELEASE (N=57)	1.38	1.28	1.31	1.4	1.29	1.16	1.29

Sheet3

ELEV	RELEASE(1-no, 2-yes)	TREE	1909	1908	1907	1906	1905	1904	1903
1	1	MAN11	1640	1415	1575	1485	2080	2255	1490
1	1	MAN12	2860	3125	3095	3320	4205	4375	3575
1	1	MAN14	1220	1225	1595	1420	1280	950	780
1	1	MAN15	2515	2875	2110	1975	2185	2515	1945
1	1	MAN22	275	290	365	245	310	425	190
1	1	MAN23	900	965	865	665	840	980	310
1	1	MAN24	1905	2460	2145	2355	2385	2810	2405
1	1	MAN32	2215	2265	2555	2285	2030	2615	1665
1	1	MAN3G1							
1	1	MTW13							
1	1	MTW14							
1	1	MTW21	1400	1920	1135	1280	985	850	895
1	1	MTW24	1590	1560	1270	1200	1730	1380	1230
1	1	MTW25							
1	1	MTW2G3	2360	2420	2240	2050			
1	1	MTW2G4	1840	2400	2310	2570	2750	3200	2710
1	1	MTW35							
1	1	WHF11	2375	3020	2755	3000	3230	4095	3525
1	1	WHF14	2200	2395	2565	2625	2850	3340	3200
1	1	WHF15	1320	1595	1645	1570	1880	1795	1735
1	1	WHF21	2575	2665	2390	2615	2805	2750	2870
1	1	WHF22	1080	1410	1410	1820	2020	2400	2710
1	1	WHF23	1735	1825	2005	1875	1525	1830	1565
1	1	WHF25	1555	1765	1585	1655	1785	1575	1640
1	1	WHF32	1915	2310	2355	2600	2590	3115	2115
1	1	WHF34	1010	1360	1380	1510	1370	1410	2090
1	1	WHF35	1145	1165	1490	1630	1555	2050	2350
1	2	MAN25	1530	1505	1305	870	1075	1005	835
1	2	MAN33	955	1050	805	775	930	960	820
1	2	MAN34	600	630	840	860	930	920	410
1	2	MAN35							
1	2	MTW11	1880	2080	2670	2600	2490		
1	2	MTW12							
1	2	MTW15							
1	2	MTW22	600	450	390	250	240	110	240
1	2	MTW23	575	610	475	355	365	260	135
1	2	MTW2G1							
1	2	MTW32	2370	2510					
1	2	MTW33	1375	1370	1090	830	1135	1755	485
1	2	MTW3G1							
1	2	WHF12	1495	1520	1740	1785	1625	1735	1940
1	2	WHF13	1910	1830	1755	1810	2765	3365	2395
1	2	WHF24	910	940	1005	1025	1055	1115	1300
1	2	WHF31	1815	1530	1995	2465	2495	2340	2635
1	2	WHF33	680	690	450				
2	1	MAN41	845	1025	1040	1070	845	1185	805
2	1	MAN42	380	500	720	480	340	390	330

Sheet3

2	1	MAN44	1370	1640	1185	1395	1185	1540	1170
2	1	MAN51	260	345	255	300	315	395	405
2	1	MAN52							
2	1	MAN61							
2	1	MAN64	365	425	445	485	420	580	385
2	1	MTW51	90	160	120	50	70	110	90
2	1	MTW52	60	60	60	50	40	60	60
2	1	MTW53	570	1065	1065	1355	1370	1480	1155
2	1	MTW54							
2	1	MTW55	585	860	880	760	650	790	760
2	1	MTW61	475	520	400	400	390	255	345
2	1	MTW62	1110						
2	1	MTW64	895	1645	1200	1095	1070	1435	1155
2	1	MTW65							
2	1	MTW6G1	305	355	315	310	340	550	425
2	1	MTW6G2							
2	1	WHF41							
2	1	WHF42	765	870	705	755	710	755	850
2	1	WHF43	2060	2545	1920	2265	2230	2450	2250
2	1	WHF44	2000	2660	2590	2565	2105	2010	2210
2	1	WHF45	2965	3405	2660	2630	2435	3430	2280
2	1	WHF51	680	695	445	425	395	440	460
2	1	WHF52	190	220	270	310	330	610	350
2	1	WHF55	555	730	645	795	1380	1150	675
2	1	WHF61	310	315	290	365	455	715	485
2	1	WHF62	1195	1705	1665	1900	1890	2120	1235
2	1	WHF63	825	960	760	630	470	620	485
2	1	WHF65	400	540	390	400	440	600	420
2	2	MAN43	345	445	500	405	445	845	730
2	2	MAN45	60	80	30	50	170	250	150
2	2	MAN54	1070	1185	1090	1200	1260	1750	1670
2	2	MAN55	1190	1580	1585	1875	1725	2450	2075
2	2	MTW43	55	65	40	105	115	205	190
2	2	MTW45	910	850	740	790	510	220	380
2	2	MTW4G1	340	435	235	260	305	290	610
2	2	WHF64	65	55	110	130	220	285	185
		LREL	1.28	1.29	1.21	1.24	1.37	1.36	1.12
		LNO	1.71	1.93	1.86	1.9	2.02	2.22	1.95
		HREL	0.5	0.59	0.54	0.6	0.59	0.79	0.75
		HNO	0.8	1.01	0.87	0.9	0.86	1.03	0.82
		RELEASE (N=26)	0.99	1.02	0.94	0.97	1.05	1.1	0.95
		NO-RELEASE (N=57)	1.24	1.46	1.35	1.39	1.42	1.6	1.36

Sheet3

ELEV	RELEASE(1-no, 2-yes)	TREE	1902	1901	1900	1899	1898	1897	1896
1	1	MAN11	830	425	150	145	60	50	60
1	1	MAN12	3475	4065	3715	3740	2875	2860	2540
1	1	MAN14	625	635	815	280	340	440	250
1	1	MAN15	1785	1850	1685	1255	970	680	885
1	1	MAN22	290	180	160	160	180	120	70
1	1	MAN23	395	390	350	665	605	290	330
1	1	MAN24	1930	1935	1635	1180	645	915	1200
1	1	MAN32	1340	1415	1200	1355	745	465	500
1	1	MAN3G1							
1	1	MTW13							
1	1	MTW14							
1	1	MTW21	680	575	770	745	975	875	1060
1	1	MTW24	890	550	370	200			
1	1	MTW25							
1	1	MTW2G3							
1	1	MTW2G4	1660	1440	1560	2060	1240	1000	1550
1	1	MTW35							
1	1	WHF11	2610	3340	3645	3410	3790	2060	1790
1	1	WHF14	2805	3130	3720	3555	4145	3395	3670
1	1	WHF15	1070	1140	1065	1005	1185	685	575
1	1	WHF21	2495	2760	3040	2875	2610	1940	1520
1	1	WHF22	2260	2720	3120	2450	2380	1660	1560
1	1	WHF23	1585	1450	1790	1390	1285	970	835
1	1	WHF25	1510	1655	1610	1440	1410	835	380
1	1	WHF32	1955	1840	1965	1400	1035	615	460
1	1	WHF34	1090	1370	1490	1570	830	600	420
1	1	WHF35	1800	1490	1760	1615	1335	1035	860
1	2	MAN25	640	585	630	520	140	180	155
1	2	MAN33	620	880	975	990	970	895	780
1	2	MAN34	340	490	610				
1	2	MAN35							
1	2	MTW11							
1	2	MTW12							
1	2	MTW15							
1	2	MTW22	220	170	240	210	240	200	200
1	2	MTW23	170	180	170	240	335	195	250
1	2	MTW2G1							
1	2	MTW32							
1	2	MTW33	245	95	635	40	110	80	230
1	2	MTW3G1							
1	2	WHF12	1515	1685	2110	1720	2455	1625	2170
1	2	WHF13	2200	2105	2275	2355	1935	850	320
1	2	WHF24	1160	1120	1665	1890			
1	2	WHF31	2465	2200	2400	2250	2250	1040	770
1	2	WHF33							
2	1	MAN41	650	775	915	1015	925	925	1145
2	1	MAN42	420	480	480	530	490	620	690

Sheet3

2	1	MAN44	910	910	595	735	810	770	895
2	1	MAN51	325	550	465	710	690	560	330
2	1	MAN52							
2	1	MAN61							
2	1	MAN64	335	415	380	395	310	340	365
2	1	MTW51	90	90	100	140	170	310	320
2	1	MTW52	40	60	30	50	50	70	30
2	1	MTW53	1090	1045	1260	1305	1490	1085	1325
2	1	MTW54							
2	1	MTW55	730	480	560				
2	1	MTW61	275	330	460	170	190	160	170
2	1	MTW62							
2	1	MTW64	1030	1085	1450	1285	1230	1100	1720
2	1	MTW65							
2	1	MTW6G1	310	320	470	415	485	515	485
2	1	MTW6G2							
2	1	WHF41							
2	1	WHF42	660	615	595	630	575	635	500
2	1	WHF43	2215	1915	1375	1405	1270	1230	940
2	1	WHF44	1910	1840	1020	1160	1210	1070	450
2	1	WHF45	1290	1345	1130	745	590	790	950
2	1	WHF51	390	530	705	660	695	740	695
2	1	WHF52	130	100	70	60	60	120	70
2	1	WHF55	535	530	765	830	1005	850	1000
2	1	WHF61	440	515	395	350	385	485	580
2	1	WHF62	1375	1605	1305	1350	1415	1355	1655
2	1	WHF63	405	480	465	415	420	470	565
2	1	WHF65	300	330	320	190	310	280	380
2	2	MAN43	540	605	560	540	460	415	520
2	2	MAN45	30	60	90	70	100	120	120
2	2	MAN54	1490	2040	2055	2170	1915	1505	1575
2	2	MAN55	2125	2695	2365	3240	2720	2600	2780
2	2	MTW43	330	315	450	490	440	470	580
2	2	MTW45	280	270					
2	2	MTW4G1	570						
2	2	WHF64	195	270	310	370	465	530	670
		LREL	0.96	0.95	1.17	1.14	1.05	0.63	0.61
		LNO	1.58	1.64	1.7	1.55	1.43	1.07	1.03
		HREL	0.7	0.89	0.97	1.15	1.02	0.94	1.04
		HNO	0.69	0.71	0.67	0.66	0.67	0.66	0.69
		RELEASE (N=26)	0.84	0.93	1.1	1.14	1.04	0.76	0.79
		NO-RELEASE (N=57)	1.11	1.15	1.16	1.09	1.03	0.86	0.85

Sheet3

ELEV	RELEASE(1-no, 2-yes)	TREE	1895	1894	1893	1892	1891	1890	1889
1	1	MAN11	65	105	60	75	125	120	140
1	1	MAN12	1780	2105	2105	1880	1315	925	510
1	1	MAN14	160	130	70	90	180	120	50
1	1	MAN15	820	880	740	1090	915	955	920
1	1	MAN22	60	50	40	60	60	70	70
1	1	MAN23	200	200	225	455	440	440	300
1	1	MAN24	1115	1065	1090	1560	1300	1275	1235
1	1	MAN32	370	335	340	400	220	165	180
1	1	MAN3G1							
1	1	MTW13							
1	1	MTW14							
1	1	MTW21	670	980	830	1400	1090	1175	860
1	1	MTW24							
1	1	MTW25							
1	1	MTW2G3							
1	1	MTW2G4	1420	1640	1410	1890	2020		
1	1	MTW35							
1	1	WHF11	990	880	620	650	540	500	620
1	1	WHF14	1810	1700	1630	1510	1480	1620	1220
1	1	WHF15	290	210	185	255	290	260	205
1	1	WHF21	450	275	345	340	295	285	280
1	1	WHF22	1050	1000	540	500	620	530	650
1	1	WHF23	565	630	420	405	340	355	335
1	1	WHF25	335	255	245	235	195	220	255
1	1	WHF32	290	280	230	200	250	220	195
1	1	WHF34	340	570	100	70	120	90	110
1	1	WHF35	500	270	260	260	345	385	465
1	2	MAN25	115	130	150	275	350	345	515
1	2	MAN33	655	575	480	715	725	685	855
1	2	MAN34							
1	2	MAN35							
1	2	MTW11							
1	2	MTW12							
1	2	MTW15							
1	2	MTW22	90	180	130	210	380	440	430
1	2	MTW23	175	240	155	330	310	460	325
1	2	MTW2G1							
1	2	MTW32							
1	2	MTW33	170	190	200	270	160	320	
1	2	MTW3G1							
1	2	WHF12	1465	1375	735	960	1130	1150	
1	2	WHF13	120	240	415	340	355	355	435
1	2	WHF24							
1	2	WHF31	570	420	280	320	460	260	410
1	2	WHF33							
2	1	MAN41	940	735	695	725	640	630	535
2	1	MAN42	490	440	420	400	440	330	330

Sheet3

2	1	MAN44	820	750	570	540	550	745	670
2	1	MAN51							
2	1	MAN52							
2	1	MAN61							
2	1	MAN64	295	290	300	350	365	385	390
2	1	MTW51	330	290	320	420	390	490	530
2	1	MTW52	50	110	30	60	100	180	130
2	1	MTW53	1165	1215	1055	1090	1360	1225	1220
2	1	MTW54							
2	1	MTW55							
2	1	MTW61	180	245	310	180	350	300	
2	1	MTW62							
2	1	MTW64	1445	2030	2225	2555	2225	2790	2565
2	1	MTW65							
2	1	MTW6G1	450	515	535	595	500	615	675
2	1	MTW6G2							
2	1	WHF41							
2	1	WHF42	525	465	370	330	365	340	
2	1	WHF43	1130	1580					
2	1	WHF44	570	580	500	310	210	240	
2	1	WHF45	780	815	705	690	685	720	835
2	1	WHF51	720	660	705	855	790	740	675
2	1	WHF52	60	50	60	30	80	50	20
2	1	WHF55	640	840	840	870	1100	540	590
2	1	WHF61	480	475	410	520	345	390	365
2	1	WHF62	1675	1780	1705	1675	1495	1475	1415
2	1	WHF63	375	420	315	460	425	425	330
2	1	WHF65	340	460	430	780	780	650	580
2	2	MAN43	465	550	580	695	505	570	530
2	2	MAN45	110	230	180	170	240	300	240
2	2	MAN54	1225	825	800	905	735	830	550
2	2	MAN55	1930	1690	1220	1450	1450	1450	1390
2	2	MTW43	560	620	560	710	470	530	500
2	2	MTW45							
2	2	MTW4G1							
2	2	WHF64	740	360	420	800	340	300	
		LREL	0.42	0.42	0.32	0.43	0.48	0.5	0.5
		LNO	0.66	0.68	0.57	0.67	0.61	0.51	0.45
		HREL	0.84	0.71	0.63	0.79	0.62	0.66	0.64
		HNO	0.64	0.7	0.63	0.67	0.66	0.66	0.7
		RELEASE (N=26)	0.6	0.54	0.45	0.58	0.54	0.57	0.56
		NO-RELEASE (N=57)	0.65	0.69	0.6	0.67	0.63	0.59	0.57

Sheet3

ELEV	RELEASE(1-no, 2-yes)	TREE	1888	1887	1886	1885	1884	1883	1882
1	1	MAN11	95	90	150	75	100	105	155
1	1	MAN12	330	350	370	275	430	265	395
1	1	MAN14	40	50	80	60	90	80	50
1	1	MAN15	1015	995	1445	1160	1010	1005	1195
1	1	MAN22	60	60	100	70	60	60	70
1	1	MAN23	210	290	575	450	430	390	365
1	1	MAN24	1180	1070	1580	1425	1615	1420	1640
1	1	MAN32	210	235	355	250	335	280	470
1	1	MAN3G1							
1	1	MTW13							
1	1	MTW14							
1	1	MTW21	900	680	1015	770	920	880	980
1	1	MTW24							
1	1	MTW25							
1	1	MTW2G3							
1	1	MTW2G4							
1	1	MTW35							
1	1	WHF11	520	540	1080	360	400	300	350
1	1	WHF14	1350	1190	1390	930	810	780	700
1	1	WHF15	150	135	195	75	100	25	75
1	1	WHF21	330	385	550	330	320	230	255
1	1	WHF22	690	420	1080	690	480	320	320
1	1	WHF23	240	250	270	220	190	120	90
1	1	WHF25	240	270	430	285	385	415	500
1	1	WHF32	195	220	385	215	220	145	95
1	1	WHF34	60	60	80	130	170	100	60
1	1	WHF35	450	475	850	480	615	540	460
1	2	MAN25	385	410	875	635	660	565	605
1	2	MAN33	780	715	1005	745	660	500	540
1	2	MAN34							
1	2	MAN35							
1	2	MTW11							
1	2	MTW12							
1	2	MTW15							
1	2	MTW22	420	600	920	460	640	570	400
1	2	MTW23	340	380	485	290	215	125	125
1	2	MTW2G1							
1	2	MTW32							
1	2	MTW33							
1	2	MTW3G1							
1	2	WHF12							
1	2	WHF13	375	270	345	130	135	85	100
1	2	WHF24							
1	2	WHF31	370	240	660	220	220	110	80
1	2	WHF33							
2	1	MAN41	545	640	720	645	595	455	405
2	1	MAN42	320	220	270	330	510	490	360

Sheet3

2	1	MAN44	565	545	670	510	500	435	495
2	1	MAN51							
2	1	MAN52							
2	1	MAN61							
2	1	MAN64	380	540	590	775	775	750	540
2	1	MTW51	470	560	520	440	530	580	410
2	1	MTW52	140	160					
2	1	MTW53	1200	1075	1355	1045	865	1025	860
2	1	MTW54							
2	1	MTW55							
2	1	MTW61							
2	1	MTW62							
2	1	MTW64	1655	1935	2975	2815	2730	3110	2555
2	1	MTW65							
2	1	MTW6G1	625	465	425	410	445	375	400
2	1	MTW6G2							
2	1	WHF41							
2	1	WHF42							
2	1	WHF43							
2	1	WHF44							
2	1	WHF45	725	680	765	490	580	635	445
2	1	WHF51	835	815	825	640	795	820	900
2	1	WHF52	30	40	90	40	40	30	30
2	1	WHF55	780	820	730	890	810		
2	1	WHF61	330	315	350	240	300	255	195
2	1	WHF62	1435	1510	1740	1395	1315	1605	1440
2	1	WHF63	320	380	520	400	620	650	780
2	1	WHF65	520	690	1010	910	890	850	920
2	2	MAN43	425	470	610	560	725	640	610
2	2	MAN45	110	130	370	120	70	100	250
2	2	MAN54	810	810	765	655	635	565	675
2	2	MAN55							
2	2	MTW43	440	450	360	410	340	210	100
2	2	MTW45							
2	2	MTW4G1							
2	2	WHF64							
		LREL	0.45	0.44	0.72	0.41	0.42	0.33	0.31
		LNO	0.44	0.41	0.63	0.43	0.46	0.39	0.43
		HREL	0.45	0.47	0.53	0.44	0.44	0.38	0.41
		HNO	0.64	0.67	0.85	0.75	0.77	0.8	0.72
		RELEASE (N=26)	0.45	0.45	0.64	0.42	0.43	0.35	0.35
		NO-RELEASE (N=57)	0.53	0.53	0.73	0.58	0.6	0.57	0.56

Sheet3

ELEV	RELEASE(1-no, 2-yes)	TREE	1881	1880	1879	1878	1877	1876	1875
1	1	MAN11	225	235	225	220	305	415	360
1	1	MAN12	345	530	550	645	555	530	630
1	1	MAN14	90	110	180	100	90	140	
1	1	MAN15	1140	1065	1445	1625	1755	1225	1800
1	1	MAN22	140	130					
1	1	MAN23	310	415	490	525	585	310	485
1	1	MAN24	1240	1630	1640	1450	1400	1330	1790
1	1	MAN32	585	705	535	530	485	550	940
1	1	MAN3G1							
1	1	MTW13							
1	1	MTW14							
1	1	MTW21	875	920	895	1010	835	660	1115
1	1	MTW24							
1	1	MTW25							
1	1	MTW2G3							
1	1	MTW2G4							
1	1	MTW35							
1	1	WHF11	570	850	800	900	680	910	840
1	1	WHF14	500	740					
1	1	WHF15	25	65	40	130	105	200	125
1	1	WHF21	335	385	240	420	320	560	580
1	1	WHF22	420	470	390	680	410	690	690
1	1	WHF23	130	130	140	230	170	170	200
1	1	WHF25	675	490	455	575	365	375	320
1	1	WHF32	130	160	145	170	165	285	340
1	1	WHF34	110	50	70	40	90	150	580
1	1	WHF35	645	535	520	1100	960	970	760
1	2	MAN25	555	770	755	540	605	505	695
1	2	MAN33	590	800	890	715	575	600	810
1	2	MAN34							
1	2	MAN35							
1	2	MTW11							
1	2	MTW12							
1	2	MTW15							
1	2	MTW22	450	580	560	820	1430	1210	1750
1	2	MTW23	100	135	95	105	95	90	125
1	2	MTW2G1							
1	2	MTW32							
1	2	MTW33							
1	2	MTW3G1							
1	2	WHF12							
1	2	WHF13	85	70	100	90	125	105	75
1	2	WHF24							
1	2	WHF31	170	150	130	380	220	440	310
1	2	WHF33							
2	1	MAN41	410	435	310	360	385	395	485
2	1	MAN42	390	510	610	440	430	460	690

Sheet3

2	1	MAN44	525	560	345	455	360	285	420
2	1	MAN51							
2	1	MAN52							
2	1	MAN61							
2	1	MAN64	725	960	1090	820	650	720	580
2	1	MTW51	630	730					
2	1	MTW52							
2	1	MTW53	905	820	1170	825	750	700	815
2	1	MTW54							
2	1	MTW55							
2	1	MTW61							
2	1	MTW62							
2	1	MTW64	2870	3665	2575	2325	2215	2165	2300
2	1	MTW65							
2	1	MTW6G1	375	475	400	320	240	435	510
2	1	MTW6G2							
2	1	WHF41							
2	1	WHF42							
2	1	WHF43							
2	1	WHF44							
2	1	WHF45	570	795	530	385	255	485	365
2	1	WHF51	1070	1220	2300	1780	1510	1370	2400
2	1	WHF52	60	40	40	30	20	130	180
2	1	WHF55							
2	1	WHF61	190	190	125	175	195	220	235
2	1	WHF62	1415	1685	1540	1485	1350	985	1635
2	1	WHF63	700	800	540	480	460	700	700
2	1	WHF65	880	970	450	1100	800		
2	2	MAN43	535	605	335	330	330	560	845
2	2	MAN45	170	310	930	400	460	270	630
2	2	MAN54	795	885	1005	725	565	725	885
2	2	MAN55							
2	2	MTW43	60	40	50	30	20	60	60
2	2	MTW45							
2	2	MTW4G1							
2	2	WHF64							
		LREL	0.33	0.42					
		LNO	0.45	0.51					
		HREL	0.39	0.46					
		HNO	0.78	0.92					
		RELEASE (N=26)	0.35	0.43					
		NO-RELEASE (N=57)	0.59	0.69					

Sheet3

ELEV	RELEASE(1-no, 2-yes)	TREE	1874	1873	1872	1871	1870	1869	1868
1	1	MAN11	385	610	570	535	570		
1	1	MAN12	525	535	560	785	770	500	670
1	1	MAN14							
1	1	MAN15	1600	1430	1245	1475	1540	1165	1295
1	1	MAN22							
1	1	MAN23	465	390	475	565	825	920	610
1	1	MAN24	1765	1740	1400	1820	2010	1220	1595
1	1	MAN32	1085	910	955	1470	1735	1285	1330
1	1	MAN3G1							
1	1	MTW13							
1	1	MTW14							
1	1	MTW21	1130	945	930	980	1255	680	770
1	1	MTW24							
1	1	MTW25							
1	1	MTW2G3							
1	1	MTW2G4							
1	1	MTW35							
1	1	WHF11	830	760	930	980	1020	940	1150
1	1	WHF14							
1	1	WHF15	100	90	135	135	155	150	140
1	1	WHF21	380	250	400	1130	1200	870	800
1	1	WHF22	490	270	400				
1	1	WHF23	170	200	160	160	130		
1	1	WHF25	385	375	455	650	660	820	940
1	1	WHF32	390	295	365	325	385	340	465
1	1	WHF34	250	260	260	290	160		
1	1	WHF35	650	670	650	680	730	920	800
1	2	MAN25	665	525	465	630	660	655	555
1	2	MAN33	1065	840	940	1190	1290	990	915
1	2	MAN34							
1	2	MAN35							
1	2	MTW11							
1	2	MTW12							
1	2	MTW15							
1	2	MTW22	1450	960	870	990	1430	810	830
1	2	MTW23	75	80	105	105	150	75	115
1	2	MTW2G1							
1	2	MTW32							
1	2	MTW33							
1	2	MTW3G1							
1	2	WHF12							
1	2	WHF13	105	165	240	240	235	260	230
1	2	WHF24							
1	2	WHF31	280	440	600	780	1070		
1	2	WHF33							
2	1	MAN41	415	375	630	795	635	540	495
2	1	MAN42	670	580	590	640	470		

Sheet3

2	1	MAN44	340	345	455	730	925	1070	970
2	1	MAN51							
2	1	MAN52							
2	1	MAN61							
2	1	MAN64	460	390	430	650	670	300	240
2	1	MTW51							
2	1	MTW52							
2	1	MTW53	675	545	655	620	790	530	540
2	1	MTW54							
2	1	MTW55							
2	1	MTW61							
2	1	MTW62							
2	1	MTW64	2250	1810	1970				
2	1	MTW65							
2	1	MTW6G1	390	355	430	525	735	460	535
2	1	MTW6G2							
2	1	WHF41							
2	1	WHF42							
2	1	WHF43							
2	1	WHF44							
2	1	WHF45	355	245	255	120	130	50	110
2	1	WHF51	2210	1960	1730	1700	1870	1230	1090
2	1	WHF52	130	60	70	200	380	330	470
2	1	WHF55							
2	1	WHF61	205	250	160	145	130	70	115
2	1	WHF62	1475	1395	1100	1230	1505	1180	1120
2	1	WHF63	580	640	660	640	670	360	420
2	1	WHF65							
2	2	MAN43	765	690	710	895	945	555	660
2	2	MAN45	530	380	430	580	590		
2	2	MAN54	1025	680	1210	1550	1290		
2	2	MAN55							
2	2	MTW43	50	60	80	60	40		
2	2	MTW45							
2	2	MTW4G1							
2	2	WHF64							

LREL
LNO
HREL
HNO
RELEASE (N=26)
NO-RELEASE (N=57)

Sheet3

ELEV	RELEASE(1-no, 2-yes)	TREE	1867	1866	1865	1864	1863	1862	1861
1	1	MAN11							
1	1	MAN12	610	585	545	670	590	710	730
1	1	MAN14							
1	1	MAN15	1365	1105	1345	1495	1580	1670	1310
1	1	MAN22							
1	1	MAN23	640	635	585	460	720	525	595
1	1	MAN24	1345	1250	1220	1600	1840	1985	1770
1	1	MAN32	1585	1305	1305	1245	1440	1605	1565
1	1	MAN3G1							
1	1	MTW13							
1	1	MTW14							
1	1	MTW21	710	530	530	800	910	780	1150
1	1	MTW24							
1	1	MTW25							
1	1	MTW2G3							
1	1	MTW2G4							
1	1	MTW35							
1	1	WHF11	1220	1080	1090	1090	800	970	700
1	1	WHF14							
1	1	WHF15	130	150	190	200	220	280	310
1	1	WHF21	790	770	770	840	830	1140	770
1	1	WHF22							
1	1	WHF23							
1	1	WHF25	920	680	565	620	595	755	725
1	1	WHF32	630	455	555	675	635	680	525
1	1	WHF34							
1	1	WHF35	860	790	960	1110	1150	1370	1060
1	2	MAN25	650	685	565	440	510	595	325
1	2	MAN33	1315	1445	1285	1630	1605	1365	1170
1	2	MAN34							
1	2	MAN35							
1	2	MTW11							
1	2	MTW12							
1	2	MTW15							
1	2	MTW22	760	620	520	640	420	330	600
1	2	MTW23	105	80	60	90	55	40	130
1	2	MTW2G1							
1	2	MTW32							
1	2	MTW33							
1	2	MTW3G1							
1	2	WHF12							
1	2	WHF13	200	260	260	150	230	170	140
1	2	WHF24							
1	2	WHF31							
1	2	WHF33							
2	1	MAN41	690	530	510	495	465	380	305
2	1	MAN42							

Sheet3

2	1	MAN44	1010	480	460	500	310	250	260
2	1	MAN51							
2	1	MAN52							
2	1	MAN61							
2	1	MAN64							
2	1	MTW51							
2	1	MTW52							
2	1	MTW53	875	770	600	805	745	725	870
2	1	MTW54							
2	1	MTW55							
2	1	MTW61							
2	1	MTW62							
2	1	MTW64							
2	1	MTW65							
2	1	MTW6G1	785	780	710	665	710	630	960
2	1	MTW6G2							
2	1	WHF41							
2	1	WHF42							
2	1	WHF43							
2	1	WHF44							
2	1	WHF45	110	55	115	355	350	370	370
2	1	WHF51	1200	1190	1260	1440	1020	1090	740
2	1	WHF52	540	330	260	360	320	670	390
2	1	WHF55							
2	1	WHF61	150	125	150	175	230	300	290
2	1	WHF62	1220	1035	990	1140	1245	1380	1170
2	1	WHF63	610	690	510	690	900	1240	1200
2	1	WHF65							
2	2	MAN43	840	500	575	935	760	760	645
2	2	MAN45							
2	2	MAN54							
2	2	MAN55							
2	2	MTW43							
2	2	MTW45							
2	2	MTW4G1							
2	2	WHF64							

LREL
LNO
HREL
HNO
RELEASE (N=26)
NO-RELEASE (N=57)

Sheet3

ELEV	RELEASE(1-no, 2-yes)	TREE	1860	1859	1858	1857	1856	1855	1854
1	1	MAN11							
1	1	MAN12	790	350	515	600	650	780	685
1	1	MAN14							
1	1	MAN15	1460	1350	1340	1650	1805	1475	1200
1	1	MAN22							
1	1	MAN23	435	255	350	420	820	590	455
1	1	MAN24	1660	1790	1530	1440	1380	1080	1110
1	1	MAN32	1325	2210	1780	1680			
1	1	MAN3G1							
1	1	MTW13							
1	1	MTW14							
1	1	MTW21	1150	1140	1410				
1	1	MTW24							
1	1	MTW25							
1	1	MTW2G3							
1	1	MTW2G4							
1	1	MTW35							
1	1	WHF11	1270						
1	1	WHF14							
1	1	WHF15	320	250	280	210	240	190	180
1	1	WHF21	780	850	850	670	870	840	690
1	1	WHF22							
1	1	WHF23							
1	1	WHF25	655	445	445	350	325	235	240
1	1	WHF32	415	345	285	220	230	235	270
1	1	WHF34							
1	1	WHF35	870	800	750	680	650	490	440
1	2	MAN25	225	185	225	180	240	155	130
1	2	MAN33	1395	1220	1190	1200	1150	1145	915
1	2	MAN34							
1	2	MAN35							
1	2	MTW11							
1	2	MTW12							
1	2	MTW15							
1	2	MTW22	740	790	800	670	750	690	470
1	2	MTW23	130	145	160	230	250	195	175
1	2	MTW2G1							
1	2	MTW32							
1	2	MTW33							
1	2	MTW3G1							
1	2	WHF12							
1	2	WHF13	210						
1	2	WHF24							
1	2	WHF31							
1	2	WHF33							
2	1	MAN41	345	290	450	370	295	245	200
2	1	MAN42							

Sheet3

2	1	MAN44	300	300	440	410	530	320	200
2	1	MAN51							
2	1	MAN52							
2	1	MAN61							
2	1	MAN64							
2	1	MTW51							
2	1	MTW52							
2	1	MTW53	640	725	825	685	855	570	480
2	1	MTW54							
2	1	MTW55							
2	1	MTW61							
2	1	MTW62							
2	1	MTW64							
2	1	MTW65							
2	1	MTW6G1	785	890	875	660	930	1055	675
2	1	MTW6G2							
2	1	WHF41							
2	1	WHF42							
2	1	WHF43							
2	1	WHF44							
2	1	WHF45	325	235	255	280	365	250	300
2	1	WHF51	570						
2	1	WHF52	340	420	550	560	610	550	470
2	1	WHF55							
2	1	WHF61	285	345	400	525	590	535	495
2	1	WHF62	695	1060	905	915	1205	1370	965
2	1	WHF63	830	830	740	930	1090	1030	890
2	1	WHF65							
2	2	MAN43	800	920	910	755	805	670	475
2	2	MAN45							
2	2	MAN54							
2	2	MAN55							
2	2	MTW43							
2	2	MTW45							
2	2	MTW4G1							
2	2	WHF64							

LREL
LNO
HREL
HNO
RELEASE (N=26)
NO-RELEASE (N=57)

Sheet3

ELEV	RELEASE(1-no, 2-yes)	TREE	1853	1852	1851	1850	1849	1848	1847
1	1	MAN11							
1	1	MAN12	680	735	1000	500	600	720	700
1	1	MAN14							
1	1	MAN15	1200	855	1135	1045			
1	1	MAN22							
1	1	MAN23	700	570	595	460	190	250	360
1	1	MAN24							
1	1	MAN32							
1	1	MAN3G1							
1	1	MTW13							
1	1	MTW14							
1	1	MTW21							
1	1	MTW24							
1	1	MTW25							
1	1	MTW2G3							
1	1	MTW2G4							
1	1	MTW35							
1	1	WHF11							
1	1	WHF14							
1	1	WHF15	150	150	140	150	130	160	100
1	1	WHF21	470	360	600	390			
1	1	WHF22							
1	1	WHF23							
1	1	WHF25	175	145	155	150	200	210	135
1	1	WHF32	305	245	200	150	200	175	150
1	1	WHF34							
1	1	WHF35	410	290	400	220	130	170	240
1	2	MAN25	95	135	150	120			
1	2	MAN33	985	905	1430	1420	1525	2180	1620
1	2	MAN34							
1	2	MAN35							
1	2	MTW11							
1	2	MTW12							
1	2	MTW15							
1	2	MTW22	450	320	470	680	540	710	650
1	2	MTW23	210	345	540	515	605	645	505
1	2	MTW2G1							
1	2	MTW32							
1	2	MTW33							
1	2	MTW3G1							
1	2	WHF12							
1	2	WHF13							
1	2	WHF24							
1	2	WHF31							
1	2	WHF33							
2	1	MAN41	230	275	260	280	290	320	270
2	1	MAN42							

Sheet3

2	1	MAN44	260	340	250	270	210	180	110
2	1	MAN51							
2	1	MAN52							
2	1	MAN61							
2	1	MAN64							
2	1	MTW51							
2	1	MTW52							
2	1	MTW53	470	555	485	585	390	615	455
2	1	MTW54							
2	1	MTW55							
2	1	MTW61							
2	1	MTW62							
2	1	MTW64							
2	1	MTW65							
2	1	MTW6G1	720	750	885	830	790	1040	1015
2	1	MTW6G2							
2	1	WHF41							
2	1	WHF42							
2	1	WHF43							
2	1	WHF44							
2	1	WHF45	310	290	285	275	340	400	450
2	1	WHF51							
2	1	WHF52							
2	1	WHF55							
2	1	WHF61	625	675	570	525	415	620	640
2	1	WHF62	1240	1175	1215	1195	805	1085	1320
2	1	WHF63	1270	1100	1110	850			
2	1	WHF65							
2	2	MAN43	760	870	805	800	870	900	740
2	2	MAN45							
2	2	MAN54							
2	2	MAN55							
2	2	MTW43							
2	2	MTW45							
2	2	MTW4G1							
2	2	WHF64							

LREL
LNO
HREL
HNO
RELEASE (N=26)
NO-RELEASE (N=57)

Sheet3

ELEV	RELEASE(1-no, 2-yes)	TREE	1846	1845	1844	1843	1842	1841	1840
1	1	MAN11							
1	1	MAN12	530	450	220	260			
1	1	MAN14							
1	1	MAN15							
1	1	MAN22							
1	1	MAN23	230	110	70	170	240	250	240
1	1	MAN24							
1	1	MAN32							
1	1	MAN3G1							
1	1	MTW13							
1	1	MTW14							
1	1	MTW21							
1	1	MTW24							
1	1	MTW25							
1	1	MTW2G3							
1	1	MTW2G4							
1	1	MTW35							
1	1	WHF11							
1	1	WHF14							
1	1	WHF15	120	120	80	170	180	150	220
1	1	WHF21							
1	1	WHF22							
1	1	WHF23							
1	1	WHF25	220	205	110	195	165	275	530
1	1	WHF32	190	180	75	145	140	140	200
1	1	WHF34							
1	1	WHF35	390	340	230	340	410	460	490
1	2	MAN25							
1	2	MAN33	1700	1615	870	1150	1255	1165	1345
1	2	MAN34							
1	2	MAN35							
1	2	MTW11							
1	2	MTW12							
1	2	MTW15							
1	2	MTW22	450	520	570	760	720	600	580
1	2	MTW23	570	600	340	350	380	410	680
1	2	MTW2G1							
1	2	MTW32							
1	2	MTW33							
1	2	MTW3G1							
1	2	WHF12							
1	2	WHF13							
1	2	WHF24							
1	2	WHF31							
1	2	WHF33							
2	1	MAN41	320	320	260	360	580	440	630
2	1	MAN42							

Sheet3

2	1	MAN44	150	180	130	100	110	60	590
2	1	MAN51							
2	1	MAN52							
2	1	MAN61							
2	1	MAN64							
2	1	MTW51							
2	1	MTW52							
2	1	MTW53	680	590	520	775	715	730	990
2	1	MTW54							
2	1	MTW55							
2	1	MTW61							
2	1	MTW62							
2	1	MTW64							
2	1	MTW65							
2	1	MTW6G1	930	990	735	905	1055	880	1035
2	1	MTW6G2							
2	1	WHF41							
2	1	WHF42							
2	1	WHF43							
2	1	WHF44							
2	1	WHF45	405	385	145	245	220	245	270
2	1	WHF51							
2	1	WHF52							
2	1	WHF55							
2	1	WHF61	570	585	310	455	385	425	415
2	1	WHF62	1120	990	410	680	680	775	980
2	1	WHF63							
2	1	WHF65							
2	2	MAN43	700	820	390	260	470	790	910
2	2	MAN45							
2	2	MAN54							
2	2	MAN55							
2	2	MTW43							
2	2	MTW45							
2	2	MTW4G1							
2	2	WHF64							

LREL
LNO
HREL
HNO
RELEASE (N=26)
NO-RELEASE (N=57)

Sheet3

ELEV	RELEASE(1-no, 2-yes)	TREE	1839	1838	1837	1836	1835	1834	1833
1	1	MAN11							
1	1	MAN12							
1	1	MAN14							
1	1	MAN15							
1	1	MAN22							
1	1	MAN23							
1	1	MAN24							
1	1	MAN32							
1	1	MAN3G1							
1	1	MTW13							
1	1	MTW14							
1	1	MTW21							
1	1	MTW24							
1	1	MTW25							
1	1	MTW2G3							
1	1	MTW2G4							
1	1	MTW35							
1	1	WHF11							
1	1	WHF14							
1	1	WHF15	170	140	190	210	170	240	180
1	1	WHF21							
1	1	WHF22							
1	1	WHF23							
1	1	WHF25	430	430	465	615	675	925	425
1	1	WHF32	105	200	230	265	260	335	370
1	1	WHF34							
1	1	WHF35	310	360	500	620	640	560	680
1	2	MAN25							
1	2	MAN33	1205	1385	1405	1655	1515	1460	1700
1	2	MAN34							
1	2	MAN35							
1	2	MTW11							
1	2	MTW12							
1	2	MTW15							
1	2	MTW22	380	340	330	380	350	500	470
1	2	MTW23							
1	2	MTW2G1							
1	2	MTW32							
1	2	MTW33							
1	2	MTW3G1							
1	2	WHF12							
1	2	WHF13							
1	2	WHF24							
1	2	WHF31							
1	2	WHF33							
2	1	MAN41							
2	1	MAN42							

Sheet3

2	1	MAN44							
2	1	MAN51							
2	1	MAN52							
2	1	MAN61							
2	1	MAN64							
2	1	MTW51							
2	1	MTW52							
2	1	MTW53	670	795	950	1120	815	985	1155
2	1	MTW54							
2	1	MTW55							
2	1	MTW61							
2	1	MTW62							
2	1	MTW64							
2	1	MTW65							
2	1	MTW6G1	820	980	1040	1335	1065	1115	1405
2	1	MTW6G2							
2	1	WHF41							
2	1	WHF42							
2	1	WHF43							
2	1	WHF44							
2	1	WHF45	165	245	350	575	435	705	505
2	1	WHF51							
2	1	WHF52							
2	1	WHF55							
2	1	WHF61	260	320	395	375	390	650	525
2	1	WHF62	715	820	1015	1070	1040	1340	1020
2	1	WHF63							
2	1	WHF65							
2	2	MAN43	520	340	660	720	710	730	
2	2	MAN45							
2	2	MAN54							
2	2	MAN55							
2	2	MTW43							
2	2	MTW45							
2	2	MTW4G1							
2	2	WHF64							

LREL
LNO
HREL
HNO
RELEASE (N=26)
NO-RELEASE (N=57)

Sheet3

ELEV	RELEASE(1-no, 2-yes)	TREE	1832	1831	1830	1829	1828	1827	1826
1	1	MAN11							
1	1	MAN12							
1	1	MAN14							
1	1	MAN15							
1	1	MAN22							
1	1	MAN23							
1	1	MAN24							
1	1	MAN32							
1	1	MAN3G1							
1	1	MTW13							
1	1	MTW14							
1	1	MTW21							
1	1	MTW24							
1	1	MTW25							
1	1	MTW2G3							
1	1	MTW2G4							
1	1	MTW35							
1	1	WHF11							
1	1	WHF14							
1	1	WHF15	230	280	360	200	240	210	120
1	1	WHF21							
1	1	WHF22							
1	1	WHF23							
1	1	WHF25	380	535	690	490	485	665	695
1	1	WHF32	245	225	180	75	100	85	25
1	1	WHF34							
1	1	WHF35	730	480	560	620	400	480	420
1	2	MAN25							
1	2	MAN33	1695	1255	1530	1305	1350	1290	1460
1	2	MAN34							
1	2	MAN35							
1	2	MTW11							
1	2	MTW12							
1	2	MTW15							
1	2	MTW22	340	420	670	500	500	740	550
1	2	MTW23							
1	2	MTW2G1							
1	2	MTW32							
1	2	MTW33							
1	2	MTW3G1							
1	2	WHF12							
1	2	WHF13							
1	2	WHF24							
1	2	WHF31							
1	2	WHF33							
2	1	MAN41							
2	1	MAN42							

Sheet3

2	1	MAN44							
2	1	MAN51							
2	1	MAN52							
2	1	MAN61							
2	1	MAN64							
2	1	MTW51							
2	1	MTW52							
2	1	MTW53	795	610	1100	630	660	775	695
2	1	MTW54							
2	1	MTW55							
2	1	MTW61							
2	1	MTW62							
2	1	MTW64							
2	1	MTW65							
2	1	MTW6G1	1285	1060	1480	780	950	1030	1300
2	1	MTW6G2							
2	1	WHF41							
2	1	WHF42							
2	1	WHF43							
2	1	WHF44							
2	1	WHF45	510	735	685	440	445	410	420
2	1	WHF51							
2	1	WHF52							
2	1	WHF55							
2	1	WHF61	595	670	775	710	725	665	610
2	1	WHF62	935	1180	1250	1010	1080	1170	1110
2	1	WHF63							
2	1	WHF65							
2	2	MAN43							
2	2	MAN45							
2	2	MAN54							
2	2	MAN55							
2	2	MTW43							
2	2	MTW45							
2	2	MTW4G1							
2	2	WHF64							

LREL
LNO
HREL
HNO
RELEASE (N=26)
NO-RELEASE (N=57)

Sheet3

ELEV	RELEASE(1-no, 2-yes)	TREE	1825	1824	1823	1822	1821	1820	1819
1	1	MAN11							
1	1	MAN12							
1	1	MAN14							
1	1	MAN15							
1	1	MAN22							
1	1	MAN23							
1	1	MAN24							
1	1	MAN32							
1	1	MAN3G1							
1	1	MTW13							
1	1	MTW14							
1	1	MTW21							
1	1	MTW24							
1	1	MTW25							
1	1	MTW2G3							
1	1	MTW2G4							
1	1	MTW35							
1	1	WHF11							
1	1	WHF14							
1	1	WHF15	200	200	180	270	330	260	320
1	1	WHF21							
1	1	WHF22							
1	1	WHF23							
1	1	WHF25	845	545	575	600	640	420	365
1	1	WHF32	100	60	70	85	65	65	70
1	1	WHF34							
1	1	WHF35	560	270	190				
1	2	MAN25							
1	2	MAN33	1795	1720	1270	1285	1900	1480	2035
1	2	MAN34							
1	2	MAN35							
1	2	MTW11							
1	2	MTW12							
1	2	MTW15							
1	2	MTW22	630	750	520	610	550	580	630
1	2	MTW23							
1	2	MTW2G1							
1	2	MTW32							
1	2	MTW33							
1	2	MTW3G1							
1	2	WHF12							
1	2	WHF13							
1	2	WHF24							
1	2	WHF31							
1	2	WHF33							
2	1	MAN41							
2	1	MAN42							

Sheet3

2	1	MAN44							
2	1	MAN51							
2	1	MAN52							
2	1	MAN61							
2	1	MAN64							
2	1	MTW51							
2	1	MTW52							
2	1	MTW53	645	610	605	645	545	515	530
2	1	MTW54							
2	1	MTW55							
2	1	MTW61							
2	1	MTW62							
2	1	MTW64							
2	1	MTW65							
2	1	MTW6G1	1520	1140	900	1220	1140	1020	1190
2	1	MTW6G2							
2	1	WHF41							
2	1	WHF42							
2	1	WHF43							
2	1	WHF44							
2	1	WHF45	735	490	590	545	545	490	430
2	1	WHF51							
2	1	WHF52							
2	1	WHF55							
2	1	WHF61	715	460	410	375	270	185	410
2	1	WHF62	1310	830	860	780	880	610	760
2	1	WHF63							
2	1	WHF65							
2	2	MAN43							
2	2	MAN45							
2	2	MAN54							
2	2	MAN55							
2	2	MTW43							
2	2	MTW45							
2	2	MTW4G1							
2	2	WHF64							

LREL
LNO
HREL
HNO
RELEASE (N=26)
NO-RELEASE (N=57)

Sheet3

ELEV	RELEASE(1-no, 2-yes)	TREE	1818	1817	1816	1815	1814	1813	1812
1	1	MAN11							
1	1	MAN12							
1	1	MAN14							
1	1	MAN15							
1	1	MAN22							
1	1	MAN23							
1	1	MAN24							
1	1	MAN32							
1	1	MAN3G1							
1	1	MTW13							
1	1	MTW14							
1	1	MTW21							
1	1	MTW24							
1	1	MTW25							
1	1	MTW2G3							
1	1	MTW2G4							
1	1	MTW35							
1	1	WHF11							
1	1	WHF14							
1	1	WHF15	290	400	270	340	230	260	400
1	1	WHF21							
1	1	WHF22							
1	1	WHF23							
1	1	WHF25	440	490	320	320	160	310	410
1	1	WHF32	120	145	120	130	125	290	300
1	1	WHF34							
1	1	WHF35							
1	2	MAN25							
1	2	MAN33	1970	1840	1380	1470	1250	1360	1750
1	2	MAN34							
1	2	MAN35							
1	2	MTW11							
1	2	MTW12							
1	2	MTW15							
1	2	MTW22	630						
1	2	MTW23							
1	2	MTW2G1							
1	2	MTW32							
1	2	MTW33							
1	2	MTW3G1							
1	2	WHF12							
1	2	WHF13							
1	2	WHF24							
1	2	WHF31							
1	2	WHF33							
2	1	MAN41							
2	1	MAN42							

Sheet3

2	1	MAN44							
2	1	MAN51							
2	1	MAN52							
2	1	MAN61							
2	1	MAN64							
2	1	MTW51							
2	1	MTW52							
2	1	MTW53	525	735	855	750	360	430	260
2	1	MTW54							
2	1	MTW55							
2	1	MTW61							
2	1	MTW62							
2	1	MTW64							
2	1	MTW65							
2	1	MTW6G1	910	560	600	590	520		
2	1	MTW6G2							
2	1	WHF41							
2	1	WHF42							
2	1	WHF43							
2	1	WHF44							
2	1	WHF45	385	505	505	540	340	350	295
2	1	WHF51							
2	1	WHF52							
2	1	WHF55							
2	1	WHF61	450	490	360	445	340	350	370
2	1	WHF62	650	1235	875	1170	1225	1005	875
2	1	WHF63							
2	1	WHF65							
2	2	MAN43							
2	2	MAN45							
2	2	MAN54							
2	2	MAN55							
2	2	MTW43							
2	2	MTW45							
2	2	MTW4G1							
2	2	WHF64							

LREL
LNO
HREL
HNO
RELEASE (N=26)
NO-RELEASE (N=57)

Sheet3

ELEV	RELEASE(1-no, 2-yes)	TREE	1811	1810	1809	1808	1807	1806	1805
1	1	MAN11							
1	1	MAN12							
1	1	MAN14							
1	1	MAN15							
1	1	MAN22							
1	1	MAN23							
1	1	MAN24							
1	1	MAN32							
1	1	MAN3G1							
1	1	MTW13							
1	1	MTW14							
1	1	MTW21							
1	1	MTW24							
1	1	MTW25							
1	1	MTW2G3							
1	1	MTW2G4							
1	1	MTW35							
1	1	WHF11							
1	1	WHF14							
1	1	WHF15	410	450	360	540	610		
1	1	WHF21							
1	1	WHF22							
1	1	WHF23							
1	1	WHF25	260	320	250	200	240	130	210
1	1	WHF32	420	530	500	520	610	380	580
1	1	WHF34							
1	1	WHF35							
1	2	MAN25							
1	2	MAN33	1430						
1	2	MAN34							
1	2	MAN35							
1	2	MTW11							
1	2	MTW12							
1	2	MTW15							
1	2	MTW22							
1	2	MTW23							
1	2	MTW2G1							
1	2	MTW32							
1	2	MTW33							
1	2	MTW3G1							
1	2	WHF12							
1	2	WHF13							
1	2	WHF24							
1	2	WHF31							
1	2	WHF33							
2	1	MAN41							
2	1	MAN42							

Sheet3

2	1	MAN44							
2	1	MAN51							
2	1	MAN52							
2	1	MAN61							
2	1	MAN64							
2	1	MTW51							
2	1	MTW52							
2	1	MTW53	325	225	190	420	1190	815	700
2	1	MTW54							
2	1	MTW55							
2	1	MTW61							
2	1	MTW62							
2	1	MTW64							
2	1	MTW65							
2	1	MTW6G1							
2	1	MTW6G2							
2	1	WHF41							
2	1	WHF42							
2	1	WHF43							
2	1	WHF44							
2	1	WHF45	575	535	385	575	920	595	715
2	1	WHF51							
2	1	WHF52							
2	1	WHF55							
2	1	WHF61	515	435	535	540	805	530	470
2	1	WHF62	880	740	750	980	1270	1000	840
2	1	WHF63							
2	1	WHF65							
2	2	MAN43							
2	2	MAN45							
2	2	MAN54							
2	2	MAN55							
2	2	MTW43							
2	2	MTW45							
2	2	MTW4G1							
2	2	WHF64							

LREL
LNO
HREL
HNO
RELEASE (N=26)
NO-RELEASE (N=57)

Sheet3

ELEV	RELEASE(1-no, 2-yes)	TREE	1804	1803	1802	1801	1800	1799	1798
1	1	MAN11							
1	1	MAN12							
1	1	MAN14							
1	1	MAN15							
1	1	MAN22							
1	1	MAN23							
1	1	MAN24							
1	1	MAN32							
1	1	MAN3G1							
1	1	MTW13							
1	1	MTW14							
1	1	MTW21							
1	1	MTW24							
1	1	MTW25							
1	1	MTW2G3							
1	1	MTW2G4							
1	1	MTW35							
1	1	WHF11							
1	1	WHF14							
1	1	WHF15							
1	1	WHF21							
1	1	WHF22							
1	1	WHF23							
1	1	WHF25	200	230	210	220	230	210	220
1	1	WHF32	410	570	450	570	530	420	560
1	1	WHF34							
1	1	WHF35							
1	2	MAN25							
1	2	MAN33							
1	2	MAN34							
1	2	MAN35							
1	2	MTW11							
1	2	MTW12							
1	2	MTW15							
1	2	MTW22							
1	2	MTW23							
1	2	MTW2G1							
1	2	MTW32							
1	2	MTW33							
1	2	MTW3G1							
1	2	WHF12							
1	2	WHF13							
1	2	WHF24							
1	2	WHF31							
1	2	WHF33							
2	1	MAN41							
2	1	MAN42							

Sheet3

2	1	MAN44							
2	1	MAN51							
2	1	MAN52							
2	1	MAN61							
2	1	MAN64							
2	1	MTW51							
2	1	MTW52							
2	1	MTW53	800	1130	835	865	930	725	865
2	1	MTW54							
2	1	MTW55							
2	1	MTW61							
2	1	MTW62							
2	1	MTW64							
2	1	MTW65							
2	1	MTW6G1							
2	1	MTW6G2							
2	1	WHF41							
2	1	WHF42							
2	1	WHF43							
2	1	WHF44							
2	1	WHF45	460	750	485	875	1485	680	580
2	1	WHF51							
2	1	WHF52							
2	1	WHF55							
2	1	WHF61	690	730	655	910	830	685	560
2	1	WHF62	960	1205	945	975	1045	1135	940
2	1	WHF63							
2	1	WHF65							
2	2	MAN43							
2	2	MAN45							
2	2	MAN54							
2	2	MAN55							
2	2	MTW43							
2	2	MTW45							
2	2	MTW4G1							
2	2	WHF64							

LREL
LNO
HREL
HNO
RELEASE (N=26)
NO-RELEASE (N=57)

Sheet3

ELEV	RELEASE(1-no, 2-yes)	TREE	1797	1796	1795	1794	1793	1792	1791
1	1	MAN11							
1	1	MAN12							
1	1	MAN14							
1	1	MAN15							
1	1	MAN22							
1	1	MAN23							
1	1	MAN24							
1	1	MAN32							
1	1	MAN3G1							
1	1	MTW13							
1	1	MTW14							
1	1	MTW21							
1	1	MTW24							
1	1	MTW25							
1	1	MTW2G3							
1	1	MTW2G4							
1	1	MTW35							
1	1	WHF11							
1	1	WHF14							
1	1	WHF15							
1	1	WHF21							
1	1	WHF22							
1	1	WHF23							
1	1	WHF25	260	190	150	100	200	150	170
1	1	WHF32	720	540	660	540	800	630	680
1	1	WHF34							
1	1	WHF35							
1	2	MAN25							
1	2	MAN33							
1	2	MAN34							
1	2	MAN35							
1	2	MTW11							
1	2	MTW12							
1	2	MTW15							
1	2	MTW22							
1	2	MTW23							
1	2	MTW2G1							
1	2	MTW32							
1	2	MTW33							
1	2	MTW3G1							
1	2	WHF12							
1	2	WHF13							
1	2	WHF24							
1	2	WHF31							
1	2	WHF33							
2	1	MAN41							
2	1	MAN42							

Sheet3

2	1	MAN44						
2	1	MAN51						
2	1	MAN52						
2	1	MAN61						
2	1	MAN64						
2	1	MTW51						
2	1	MTW52						
2	1	MTW53	715	595	530	460	860	645
2	1	MTW54						
2	1	MTW55						
2	1	MTW61						
2	1	MTW62						
2	1	MTW64						
2	1	MTW65						
2	1	MTW6G1						
2	1	MTW6G2						
2	1	WHF41						
2	1	WHF42						
2	1	WHF43						
2	1	WHF44						
2	1	WHF45	420	850	720	490	1320	280
2	1	WHF51						
2	1	WHF52						
2	1	WHF55						
2	1	WHF61	680	745	910	740	850	675
2	1	WHF62	970	765	820	875	1305	860
2	1	WHF63						
2	1	WHF65						
2	2	MAN43						
2	2	MAN45						
2	2	MAN54						
2	2	MAN55						
2	2	MTW43						
2	2	MTW45						
2	2	MTW4G1						
2	2	WHF64						

LREL
LNO
HREL
HNO
RELEASE (N=26)
NO-RELEASE (N=57)

Sheet3

ELEV	RELEASE(1-no, 2-yes)	TREE	1790	1789	1788	1787	1786	1785	1784
1	1	MAN11							
1	1	MAN12							
1	1	MAN14							
1	1	MAN15							
1	1	MAN22							
1	1	MAN23							
1	1	MAN24							
1	1	MAN32							
1	1	MAN3G1							
1	1	MTW13							
1	1	MTW14							
1	1	MTW21							
1	1	MTW24							
1	1	MTW25							
1	1	MTW2G3							
1	1	MTW2G4							
1	1	MTW35							
1	1	WHF11							
1	1	WHF14							
1	1	WHF15							
1	1	WHF21							
1	1	WHF22							
1	1	WHF23							
1	1	WHF25	210	180	190	190	170	160	140
1	1	WHF32							
1	1	WHF34							
1	1	WHF35							
1	2	MAN25							
1	2	MAN33							
1	2	MAN34							
1	2	MAN35							
1	2	MTW11							
1	2	MTW12							
1	2	MTW15							
1	2	MTW22							
1	2	MTW23							
1	2	MTW2G1							
1	2	MTW32							
1	2	MTW33							
1	2	MTW3G1							
1	2	WHF12							
1	2	WHF13							
1	2	WHF24							
1	2	WHF31							
1	2	WHF33							
2	1	MAN41							
2	1	MAN42							

Sheet3

2	1	MAN44							
2	1	MAN51							
2	1	MAN52							
2	1	MAN61							
2	1	MAN64							
2	1	MTW51							
2	1	MTW52							
2	1	MTW53	795	845	980	1110	1340	1500	1730
2	1	MTW54							
2	1	MTW55							
2	1	MTW61							
2	1	MTW62							
2	1	MTW64							
2	1	MTW65							
2	1	MTW6G1							
2	1	MTW6G2							
2	1	WHF41							
2	1	WHF42							
2	1	WHF43							
2	1	WHF44							
2	1	WHF45	510	550	760				
2	1	WHF51							
2	1	WHF52							
2	1	WHF55							
2	1	WHF61	445	710	465	615	580	775	645
2	1	WHF62	1070	1220	1180	1030	930	870	1800
2	1	WHF63							
2	1	WHF65							
2	2	MAN43							
2	2	MAN45							
2	2	MAN54							
2	2	MAN55							
2	2	MTW43							
2	2	MTW45							
2	2	MTW4G1							
2	2	WHF64							

LREL
LNO
HREL
HNO
RELEASE (N=26)
NO-RELEASE (N=57)

Sheet3

ELEV	RELEASE(1-no, 2-yes)	TREE	1783	1782	1781	1780	1779	1778	1777
1	1	MAN11							
1	1	MAN12							
1	1	MAN14							
1	1	MAN15							
1	1	MAN22							
1	1	MAN23							
1	1	MAN24							
1	1	MAN32							
1	1	MAN3G1							
1	1	MTW13							
1	1	MTW14							
1	1	MTW21							
1	1	MTW24							
1	1	MTW25							
1	1	MTW2G3							
1	1	MTW2G4							
1	1	MTW35							
1	1	WHF11							
1	1	WHF14							
1	1	WHF15							
1	1	WHF21							
1	1	WHF22							
1	1	WHF23							
1	1	WHF25	140	150	120	110			
1	1	WHF32							
1	1	WHF34							
1	1	WHF35							
1	2	MAN25							
1	2	MAN33							
1	2	MAN34							
1	2	MAN35							
1	2	MTW11							
1	2	MTW12							
1	2	MTW15							
1	2	MTW22							
1	2	MTW23							
1	2	MTW2G1							
1	2	MTW32							
1	2	MTW33							
1	2	MTW3G1							
1	2	WHF12							
1	2	WHF13							
1	2	WHF24							
1	2	WHF31							
1	2	WHF33							
2	1	MAN41							
2	1	MAN42							

Sheet3

2	1	MAN44							
2	1	MAN51							
2	1	MAN52							
2	1	MAN61							
2	1	MAN64							
2	1	MTW51							
2	1	MTW52							
2	1	MTW53	1170	1130	860	700	520		
2	1	MTW54							
2	1	MTW55							
2	1	MTW61							
2	1	MTW62							
2	1	MTW64							
2	1	MTW65							
2	1	MTW6G1							
2	1	MTW6G2							
2	1	WHF41							
2	1	WHF42							
2	1	WHF43							
2	1	WHF44							
2	1	WHF45							
2	1	WHF51							
2	1	WHF52							
2	1	WHF55							
2	1	WHF61	480	455	490	430	460		
2	1	WHF62	1140	1230	1420	1490	550	480	520
2	1	WHF63							
2	1	WHF65							
2	2	MAN43							
2	2	MAN45							
2	2	MAN54							
2	2	MAN55							
2	2	MTW43							
2	2	MTW45							
2	2	MTW4G1							
2	2	WHF64							

LREL
LNO
HREL
HNO
RELEASE (N=26)
NO-RELEASE (N=57)

Sheet3

ELEV	RELEASE(1-no, 2-yes)	TREE	1776	1775	DIFF
1	1	MAN11			64800
1	1	MAN12			22365
1	1	MAN14			14730
1	1	MAN15			27380
1	1	MAN22			16075
1	1	MAN23			15145
1	1	MAN24			28475
1	1	MAN32			10745
1	1	MAN3G1			11880
1	1	MTW13			5900
1	1	MTW14			10155
1	1	MTW21			75550
1	1	MTW24			32280
1	1	MTW25			7380
1	1	MTW2G3			31175
1	1	MTW2G4			23870
1	1	MTW35			44075
1	1	WHF11			6905
1	1	WHF14			13915
1	1	WHF15			24550
1	1	WHF21			19520
1	1	WHF22			12920
1	1	WHF23			17260
1	1	WHF25			40175
1	1	WHF32			21675
1	1	WHF34			29130
1	1	WHF35			0
1	2	MAN25			45975
1	2	MAN33			15920
1	2	MAN34			8865
1	2	MAN35			19940
1	2	MTW11			5440
1	2	MTW12			18165
1	2	MTW15			8205
1	2	MTW22			0
1	2	MTW23			25095
1	2	MTW2G1			8910
1	2	MTW32			11675
1	2	MTW33			20230
1	2	MTW3G1			20550
1	2	WHF12			12070
1	2	WHF13			37075
1	2	WHF24			14855
1	2	WHF31			25780
1	2	WHF33			7375
2	1	MAN41			18215
2	1	MAN42			58030

Sheet3

2	1	MAN44			14665
2	1	MAN51			7455
2	1	MAN52			0
2	1	MAN61			25210
2	1	MAN64			12630
2	1	MTW51			18720
2	1	MTW52			7970
2	1	MTW53			805
2	1	MTW54			15820
2	1	MTW55			11380
2	1	MTW61			15875
2	1	MTW62			10940
2	1	MTW64			15315
2	1	MTW65			17515
2	1	MTW6G1			16915
2	1	MTW6G2			7485
2	1	WHF41			9030
2	1	WHF42			15700
2	1	WHF43			11445
2	1	WHF44			19375
2	1	WHF45			17915
2	1	WHF51			46680
2	1	WHF52			17530
2	1	WHF55			1185
2	1	WHF61			3030
2	1	WHF62	390	540	5895
2	1	WHF63			19720
2	1	WHF65			0
2	2	MAN43			12300
2	2	MAN45			4765
2	2	MAN54			42165
2	2	MAN55			23995
2	2	MTW43			13300
2	2	MTW45			12540
2	2	MTW4G1			21870
2	2	WHF64			770

LREL
LNO
HREL
HNO
RELEASE (N=26)
NO-RELEASE (N=57)