

Boys Club to DEC Map - sent 12/19/16 by Bruce  
 MAP 9746 3/20/78

Map ref.  
 H11028W EG West 1999  
 H11043 (in 1999)

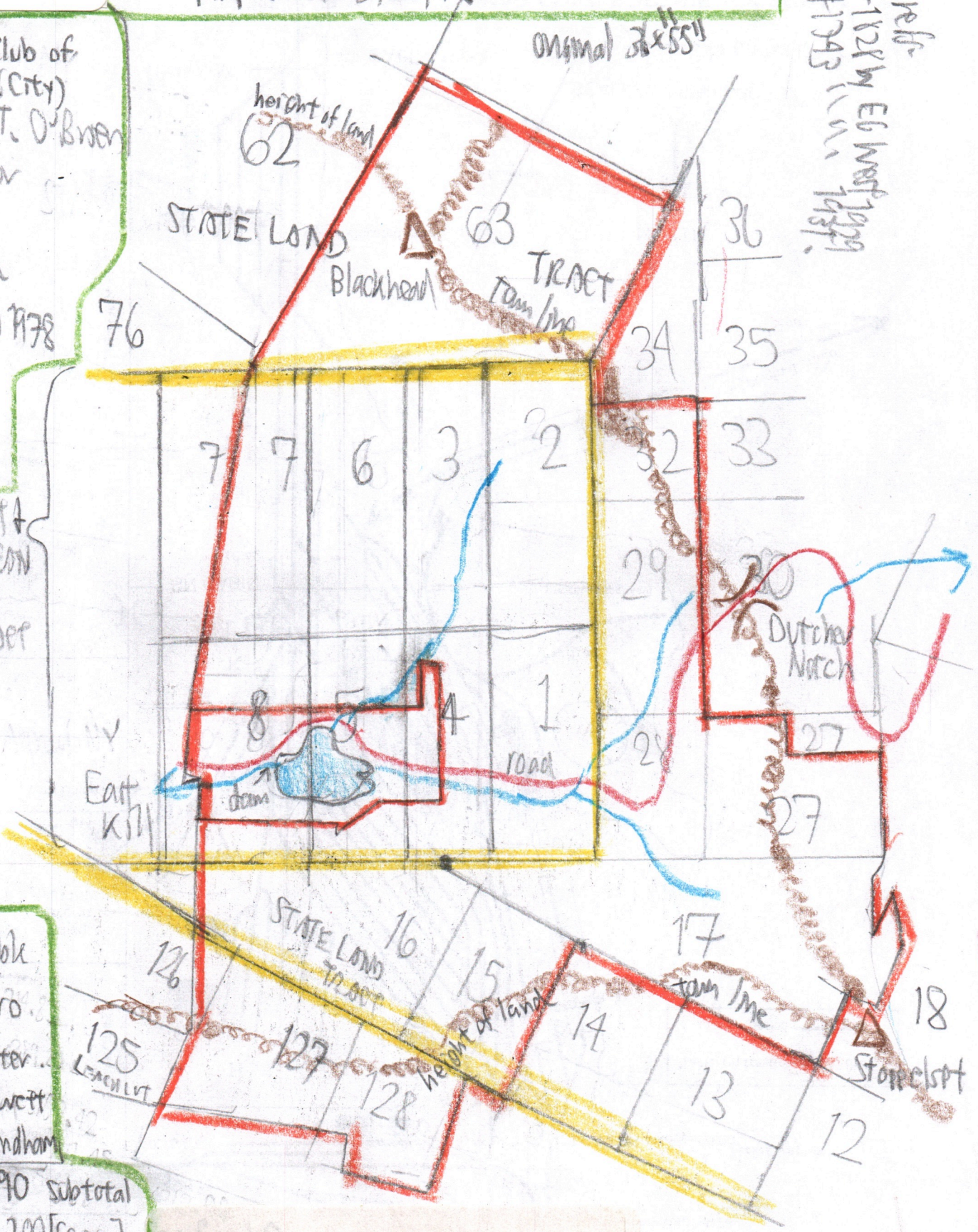
The Boys Club of  
 New York (City)  
 Clarence T. O'Brien  
 Surveyor  
 map  
 completed  
 March 20, 1978

engineer  
 Bruce R.  
 VanNortan

TRACT  
 MCLEAN  
 TRACT

Acres Table  
 714.83 Cairo  
 389.20 Hunter...  
 3157.42 Jewett  
 101.45 Windham

Σ 4362.90 subtotal  
 minus exception 200 [capra]  
 Σ 4162.90



STATE LAND TRACT  
 STATE LAND TRACT  
 STATE LAND TRACT  
 height of land  
 height of land  
 tam line  
 Stone Islet

535-14

MAP 9746-A

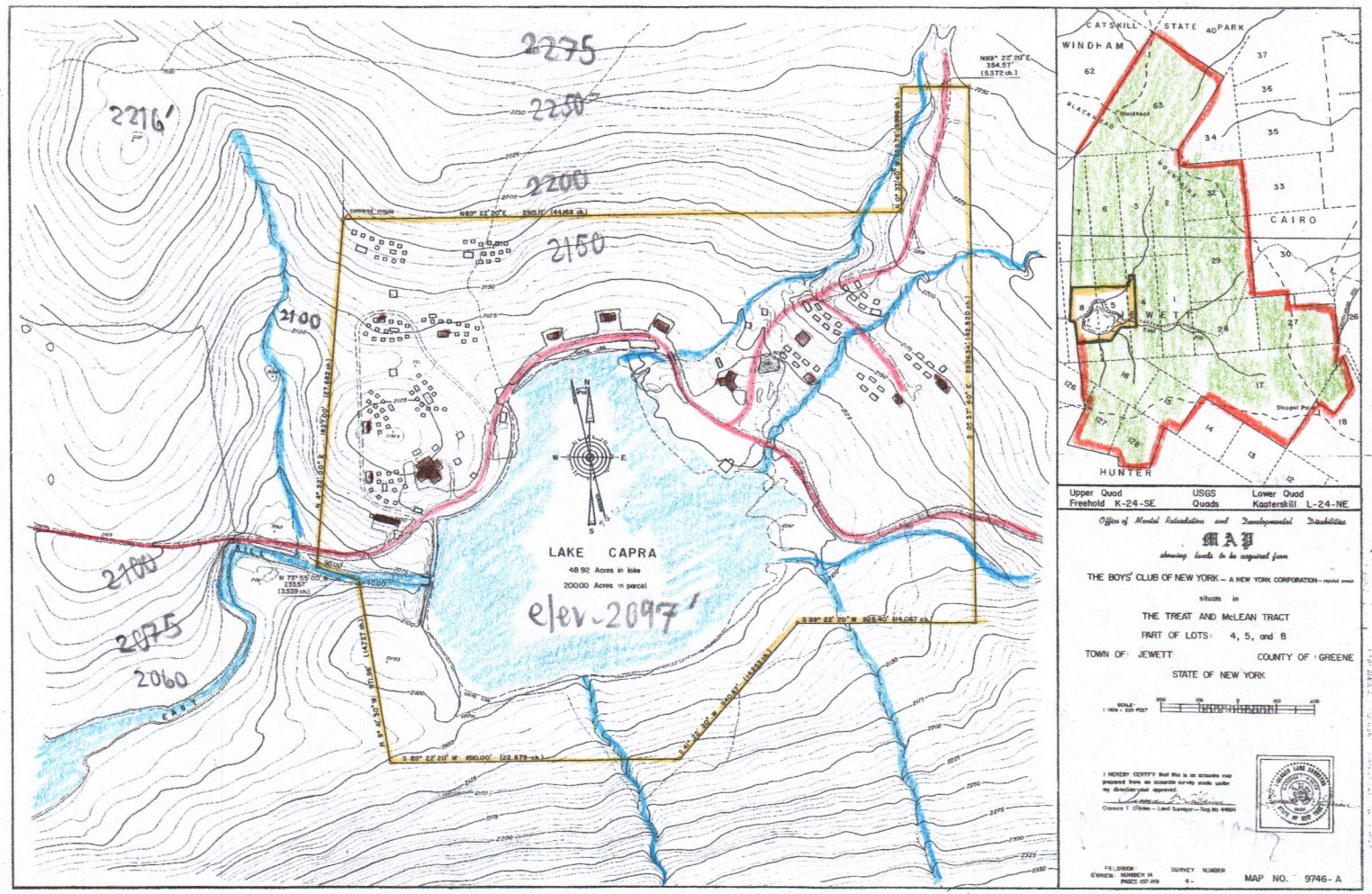
535-14

possibly March 20, 1978

(Bruce's attachment #5)

9746-A  
Map from Bruce O'Mara-Kulbert

e mail attachment #4 12/19/16  
Printed out 12/22/16



Parcel 200.00 acres  
 Lake Capra 48.92 acres  
 5 foot contour

Office of Mental Retardation & Developmental (OMRDD)  
 Disabilities lands acquired from  
 The Boys Club of New York  
 in Treat and Mclean Tract, Lots 4, 5, 8 parts  
 Clara T. O'Brian, Surveyor.

Date? None stated. This map undated, but  
 March 20, 1978  
 is for MAP 9746.