

# Butternut Junction Hill

2689'

with Emily Schroeder 11/4/13

280-120

| Site                     | P     | $\Delta p$ | $\Delta e$ | e calc          | e map  | time               |
|--------------------------|-------|------------|------------|-----------------|--------|--------------------|
| (A) Mongaup Pond         | 2984  | 0.00       |            | <u>R1 0.842</u> | 2150'  | 9:55 AM            |
| (B) begin bushwhack      | 2978  | 0.06       | 51         | 2201            |        |                    |
| (C) log road fades       | 2968  | 0.16       | 135        | 2285            |        |                    |
| (D) 2nd log road fades   | 2960  | 0.24       | 202        | 2352            |        |                    |
| (E) Cove                 | 2946  | 0.38       | 320        | 2470            | 2500'  | 10:55              |
| (F) top of ledge & talus | 2937  | 0.47       | 396        | 2546            | 2600'  |                    |
| (G) Summit 2689'         | 2920  | 0.64       | 539        | 2689            | 2689'  | 11:35 lunch        |
|                          |       | 0.58       | 539        | 2689            |        | to ca. 12:05       |
| (F) top of ledge & talus | 2935  | 0.43       | 399        | 2549            | 2600'  | 12:30              |
| (H) RM & B both 24"      | 2952  | 0.26       | 242        | 2392            |        | 12:40              |
| (I) hem scatt. under     | 2962  | 0.16       | 149        | 2299            |        |                    |
| (J) 42" YB, buttressed   | 2965  | 0.13       | 121        | 2271            |        |                    |
| (K) mature hemlocks      | 2972  | 0.06       | 56         | 2206            |        |                    |
| (L) on trail             | 2974  | 0.04       | 37         | 2187            |        | 1:04               |
| (B) begin bushwhack AM   | 2974  | 0.04       | 37         | 2187            |        | 1:20               |
| (M) trail junction       | 2976  | 0.02       | 19         | 2169            | ±2175' | 1:26               |
| (N) trail summit         | 2972  | 0.06       | 56         | 2206            | 2200'  | 1:47               |
| (O) 2nd trail summit     | 2972  | 0.06       | 56         | 2206            | 2200'  | 1:55 to 2:10 snack |
| (P) Turn abruptly W      | 2979  | -0.01      | -9         | 2141            |        | 2:17               |
| (Q) plantation red pine  | 2982  | -0.04      | -37        | 2113            |        | 2:26 ±             |
| (R) Old Hunter Road      | 2984  | -0.06      | -56        | 2094            | 2090'  | 2:33               |
| (S) Mongaup Pond Outlet  | 2992  | -0.14      | -130       | 2020            | 1990'  | 2:43               |
| (T) on Mongaup Road      | 2990  | -0.12      | -111       | 2039            | 2050'  | 2:50               |
| (A) Mongaup Pond         | 2978  | 0.00       |            | <u>R2 0.929</u> | 2150'  | 3:12 PM            |
| (Z) Livingston Manor     | 30.61 | -0.83      | -771       | 1379            | 1410'  | 9:00 AM            |

$$R1 = \frac{2689' - 2150'}{2984' - 2120'} = \frac{539'}{0.64} = 0.842 \text{ (R1)}$$

$$R2 = \frac{2689' - 2150'}{2979' - 2920'} = \frac{539'}{0.58} = 0.929 \text{ (R2)}$$

NOTE = Butternut Junc. Hill was acquired in 1927 (see Oct 1991 Willawema-Long Pond Wild Forest map p-18 UMP). The 1927-1961<sup>accy</sup> line runs from the intersection of Denning-Hardenbergh-Rockland Towns<sup>to</sup> SW, at 90° with county line, passing W of 2689'.

# Butternut Jc. Hill: Vegetation

280-121

Ⓒ 2285' Lower log road becomes obscure. Old stumps from ca. 1960 logging before SNY acquisition. 1 ASH. \$INT & LL abun. Some Hemlock.

Ⓓ 2352' Upper log road becomes obscure. No evidence of 1960 logging above. 3rd ASH, Mitchella.

Ⓔ 2470' Cove flattens out into a terrace facing SW. TIAR, HYDRG. SUB dom, some old. 60' ledge above with talus and a RHODO MAX colony midway up. Several old SUBS at base, big YBS 28" on talus. MM, MD, BASS, ASH, B, YB, ILEX MON, POLYPOD, LUNICERA TST (?) heavily browsed & branched.

Ⓕ 2546, 2549 Only VA station.

Ⓖ 2689 Summit. No ledge exposed except at SE end and that about 10' high. A RM blowdown 'cake' exposes till 2 ft deep but no ledge. Few boulders. Nearly flat summit is several acres.

Two semi-open DP glades with a few \$CAMYL. Canopy 60' with BC dom to 24". SUB-RM-YB-B. 1 stump could be natural.

e.p.?? This is a hard call for 10 or 20. No roads, no modern stumps (except one?).

Yet, summit is accessible and could have been lightly cut over in late 19th century without any existing evidence.

Ⓔ to Ⓕ Talus ledges are 1°, and possibly the upper slopes & summit.

Ⓗ 2392' RM & B both to 24", One ASH 30".

Ⓘ 2299' Scatt. HEM in understory.

Ⓙ 2271' 42" YB buttressed greatly and established on a natural stone pile. Log road running SW-NE just below it.

Ⓚ 2206' First stump on descent of 1960 era in an ASH grove on a pile of old blowdown logs. Several ravines slope down to SW as we cross them with Beech Mtn. straight ahead. Mature HEMS begin below.

Ⓛ 2187' On trail at a plastic culvert, 1 minute walk north of Ⓑ as we later find out.

Ⓜ to Ⓝ: 1:33 (7 minutes south of Ⓜ) trail closely parallel Bog # 394 — 2169'

The only point where it does. One live 20' FIR, Coptis on trail.

1:35: Ledge to E. 1 dead FIR 12" in beaver open meadow. SCIRPUS CYPERINUS, VV heavy in fruit, Solidago

Ⓝ 2206' Summit on trail up & away from Bog # 394. One 24" YB, One 30" HEM.

Ⓞ 2206' 2nd Summit. Young Oak. Widely-scattered stumps.

Ⓟ 2:17 OAK US on ground  
2:20 OAK dominant  
2:25 OAK dominant

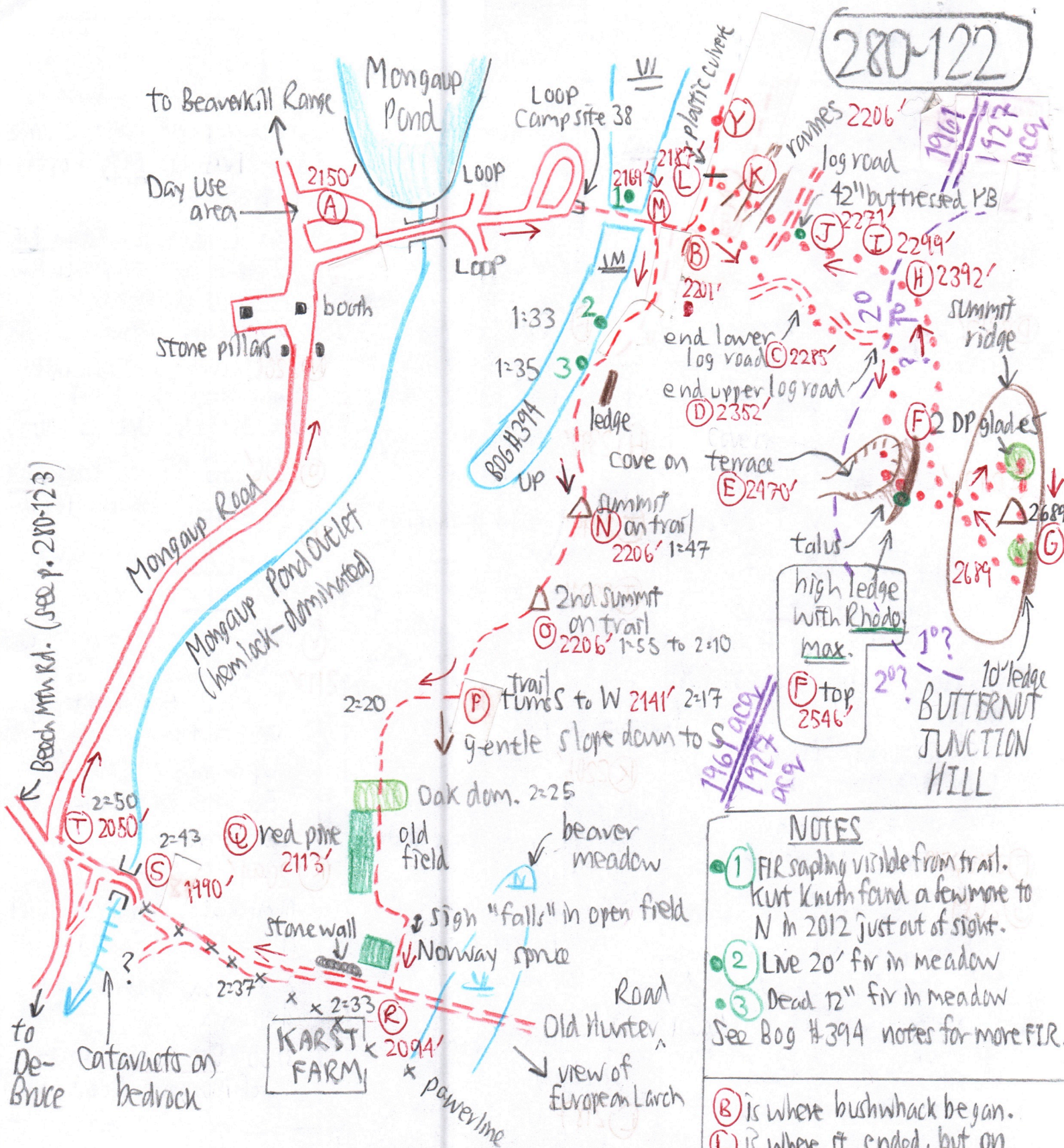
Ⓠ 2:26 Red pine plantation on W, prob 1950s or 1960s. Beaver meadow on east beyond open field. Up on hill ± 1/4 mile to SE European larch plantation bright yellow.

Ⓡ 2094' Norway spruce & a number of European invasives along Old Hunter Rd.

2:38 Join powerline & descend

3:00 One Oak on east of Mongaup Road.

Highway hike on Mongaup Road, from Old Hunter - Beech Mtn Rds. Intersection into day-use area in Campground: 1.1 miles odometer.



**NOTES**

- ① FIR sapling visible from trail. Kurt Knuth found a few more to N in 2012 just out of sight.
- ② LNE 20' fir in meadow
- ③ Dead 12" fir in meadow

See Bog #394 notes for more FIR.

(B) is where bushwhack began.  
(L) is where it ended, but on

entering the trail, we did not know whether we were N or S of (B). We erroneously headed N to (P). Terrain didn't look right - too high above wetland on W. Returned to (L) & found (B) only a 1-minute walk S of (L). Timetable: (L) 1:04, (P) 1:12, (L) 1:19, (B) 1:20, (M) 1:26. The error cost us only 15 minutes. (L) is in a mature KEM grove.

The descent route (F) to (L) might have cross-crossed the ascent route (B) to (F) but was not the same. We did not pass (J) on the ascent.