

11/11/09

White Oaks on Pakatakan Mtn.

297-11

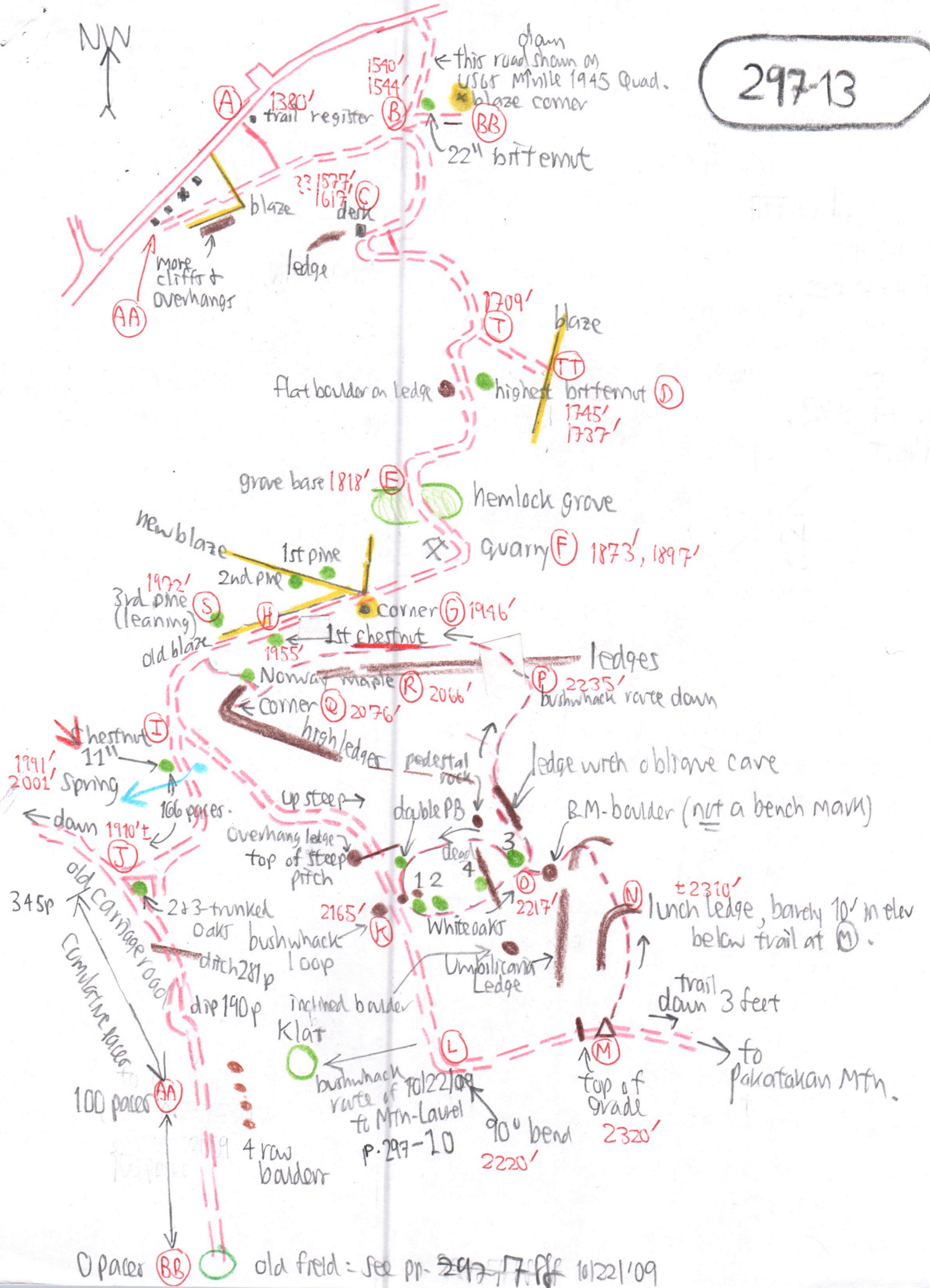
0.913

Site	p	Δp	Δe	e _{calc}	e _{map}	time	R
(A) Trail head	30.20	0.00	—	—	1380	9:54 AM	$\frac{2320' - 1380'}{3020'' - 2917''} = \frac{940'}{1.03''} = 0.913 R_1$
(B) Old road to NE	30.02	0.18	164	1544	1560		
(C) Desk	29.94	0.26	237	1617	1610		
(D) highest bittemut	29.80	0.40	365	1745			
(E) hemlock grave base	29.72	0.48	438	1818	1830		
(F) quarry	29.66	0.54	493	1873	1880	10:30	
(G) corner of 1st pine	29.58	0.62	566	1946		10:30	
(H) 1st chestnut	29.57	0.63	575	1955		10:32	
(I) Spring	29.52	0.68	621	2001	2000	10:37, 10:47	
(J) Ic. Carriage road	29.62?	0.58?	530 ±	1910 ±		10:42	
(K) 2 White oaks on trail	29.34	0.86	785	2165		10:55	
(L) 90° bend, trail	29.28	0.92	840	2220	2240	10:57	
(M) Top of 2300' level, trail	29.17	1.03	940	2320	2320	11:03	
	29.17	1.00	940	2320			$\frac{2320' - 1380'}{3017'' - 2917''} = \frac{940'}{1.00''} = 0.940 = R_2$
(N) lunch (B.M. 29.29)	29.22	0.95	>893	>2273		11:30 - Noon	
(O) 3rd white oak	29.28	0.89	837	2217			
(P) begin steep down	29.26	0.91	855	2235	2200	12:35 PM	
(Q) high corner ledge	29.43	0.74	696	2076			
(R) Norway maple	29.44	0.73	686	2066			
(I) Spring	29.52	0.65	611	1991	2000	1:02	
(S) 3rd pine, leaning	29.54	0.63	592	1972			
(F) quarry	29.62	0.55	517	1897	1880	1:17	
(D) highest bittemut	29.79	0.38	357	1737			
(T) road to E	29.82	0.35	329	1709			
(C) desk	29.96	0.21	197	1577	1610		
(B) old road to NE	30.00	0.17	160	1540	1560	1:44 to 1:50	
(A) Trailhead	30.17	0.00	—	—	1380	2:00	

0.940

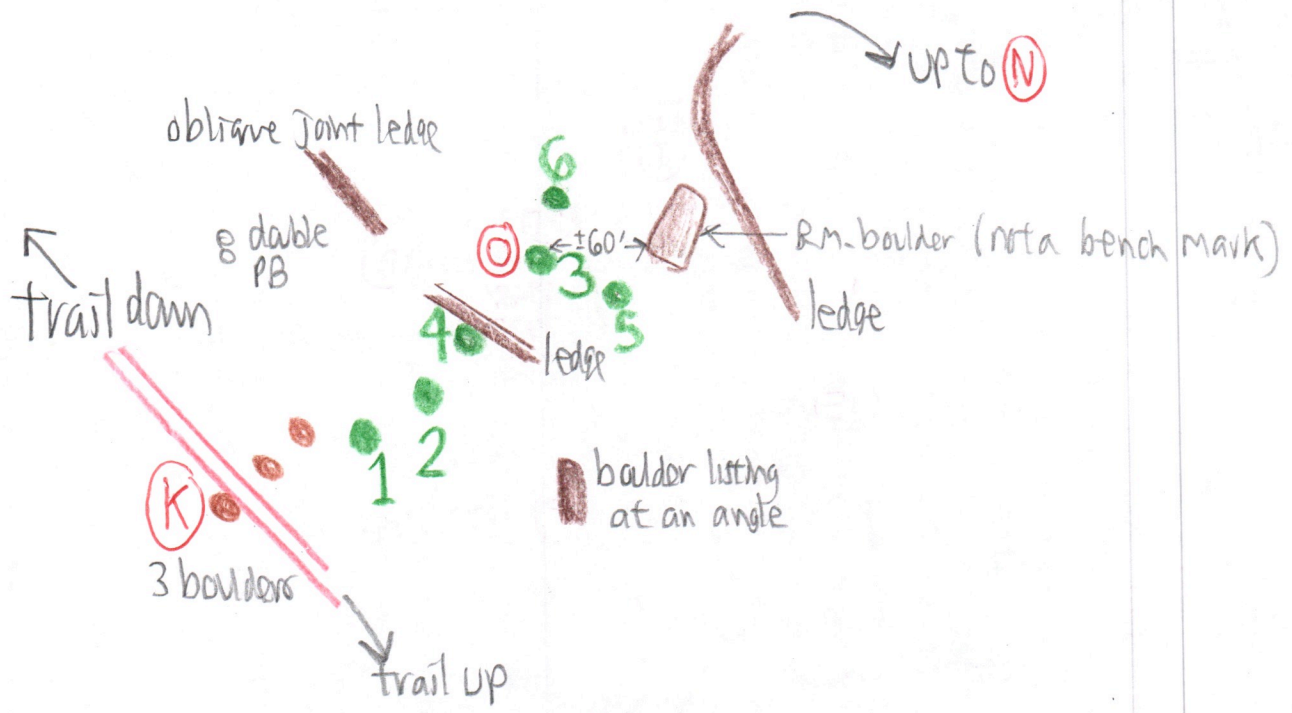
$$\frac{2320' - 1380'}{3017'' - 2917''} = \frac{940'}{1.00''} = 0.940 = R_2$$

- (AA) The road down ends at the 4th house from the trail head. The house is i.d. by a flagpole & swimming pool. Above, along the SNK blaze, is a set of high ledges with overhangs ready for archeological "digs".
- (BB) Whether a road followed this terrace is uncertain. It soon ends, phasing into a slope. The definite road descends & shows on the topo. quad.
- (T) (TT) This road climbs about 10 ft then crosses the SNK blaze (not followed beyond the blaze).
Bitternut lvs. near blaze
- (H) 1st chestnut is 5". Crown dried & is suspended over trail. Leafed out at break & is still green on 11/11/09. 3 pines in area, 2 below & 1 above (e-white)
- (R) Norway maple visible from trail; is bright yellow on 11/11/09. Norway maple at Funaris is also yellow on 10/30/09.
- (J) It is only a 3 or 4 minute walk down from (I). On the old carriage road, the junction is marked by a 2-trunked 12" oak with a 3-trunked 12" oak just above it.
- (K) The white oak site along the trail is marked by a small boulder on the uphill side with a MO on it. A second boulder is about 15' above it next to white oaks 1 & 2. Below the trail is a boulder with a triple-trunk 12" oak next to it.
- (L) to (M) Galium circ., not Lysimachia quad.
- (O) Lichens make bark i.d. difficult. #4 white oak is 8" but dead. #3 white oak is 14", live. The #3 white oak is about 60 horizontal feet from BM boulder and about 10 ft below it.
- (P) Above here is a gentle slope on the spur above the white oaks. Red oak fewer. More SUB-ASH-BAG-OST.
- (I) 11" chestnut has a bark almost identical to a N red oak & the same size.
- (C) No road west of desk, but recent cut of trees above ledge.



White oak lvs 1st noted on trail at (K) on Tuesday, Oct-27²⁰⁰⁹, with Eric Rosent John Langan.

Ryan Trapani found 2 more white oaks on 11/12/09, #5 & #6:



Dimensions with d-tape:

- #1. 13.1"
- #2. 16.0"
- #3. 12.1"
- #4. 8.1" dead
- #5. 11.3" on contour SE of #3 + nearest to RM-boulder
- #6. 11.0" N of #3.

Ryan found these