

# "Shim Creek Mtn." from the east (283-9)

with CFA forester Ryan Trapani 8/31/07

site	p	Δp	Δe	e calc	e map	e me	R
(A) Beaverville Shim Cr. Rds.	29-69	0-00	—	—	1840		R <sub>1</sub>
(B) last driveway	29-24	0.45	406	2246			= 0.903
(C) parking area SNK	29-03	0.66	596	2436		9:30 AM	
(D) leave SNK, blaze	29-00	0.69	623	2463			R <sub>2</sub>
(E) pass on Shim Cr. Rd.	28-97	0.72 0.06	650	2490	2490		
(F) skid road	28-89	0.08	78	2568			R <sub>2</sub>
(G) ledge top	28-81	0.16	156	2646			
(H) SNK blaze, less steep	28-70	0.27	264	2754			ep. 522
(I) CIMN-Sphag fen	28-66	0.31	304	2794			R <sub>2</sub>
(J) wet spot	28-63	0.34	332	2822			
(K) lightning struck BC	28-60	0.36	351	2841			R <sub>2</sub>
(NOO)	use 28.61						
(M) Summit arr.	28.60	0.37	371	2851	2851	11-10	R <sub>2</sub>
"Shim Cr. Mtn" lv.	28-60	1.07	1011	2851		11-30	
(N) sub dome defol.	28-66	1.01	954	2794			R <sub>2</sub>
(O) 1st Ash on descent	28-75	0.92	869	2709			
(P) moist slope, P. brunnii	28-90	0.77	728	2568			ep. 523
(Q) multistemmed trees	28-93	0.74	699	2539			
(R) stone wall	29-00	0.67	633	2473			R <sub>2</sub>
(S) Shim Cr. Road, enter	29-04	0.63	595	2435		12:07 PM	
(A) Beaverville Road	29-67	0.00	—	—	1840		

$$\frac{2490 - 1840}{2464 - 2897} = \frac{650}{-433} = -1.5$$

$$\frac{2851 - 2490}{2809 - 2860} = \frac{361}{-51} = -7.1$$

$$\frac{2851 - 1840}{2967 - 2860} = \frac{1011}{107} = 9.45$$

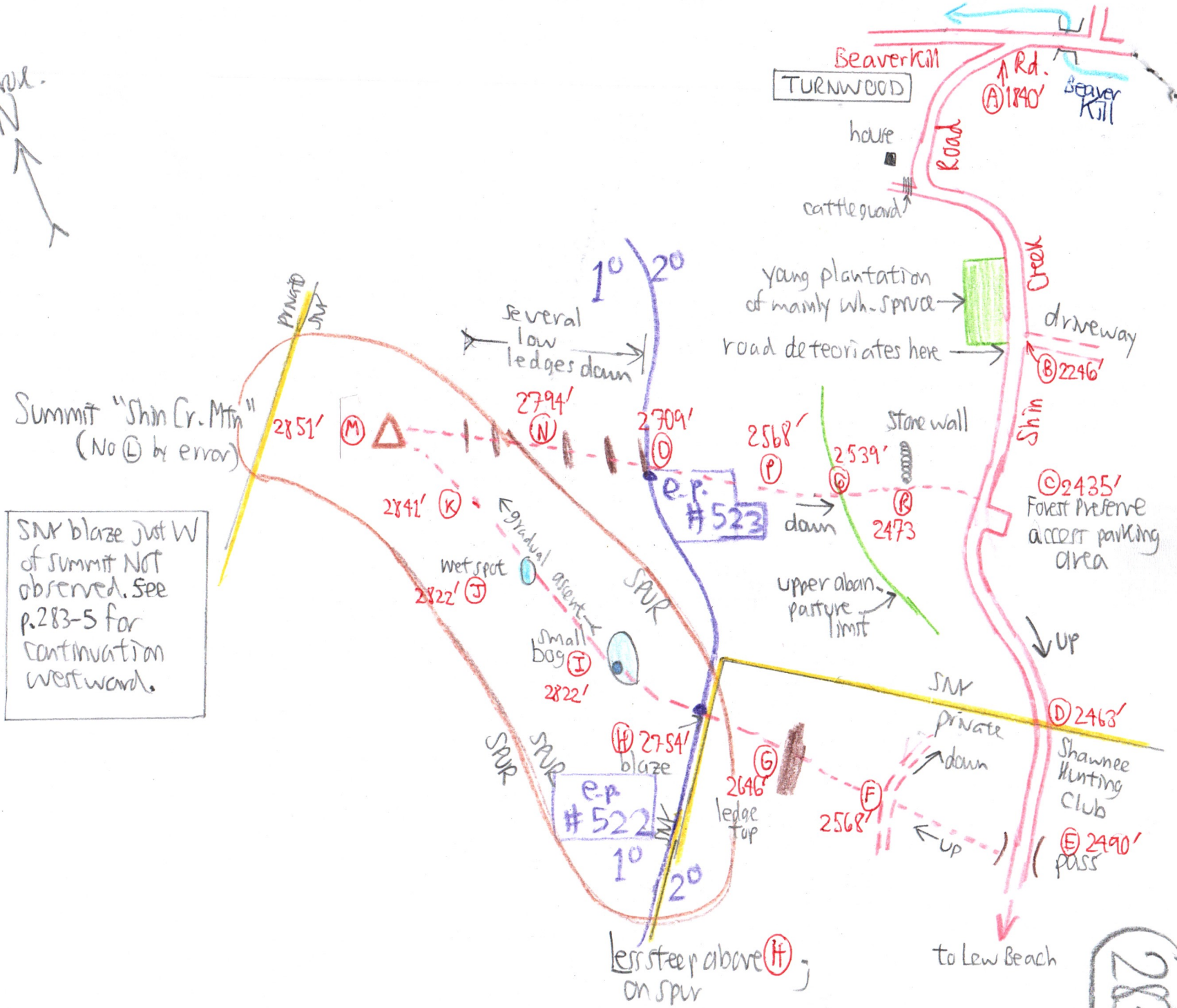
$$\frac{1011}{1.07} = 945$$

# Vegetation

283-10

## Defoliation

- (E) to (F) At least 1/2 defoliated, SUB dom. ASH + BC.  
Moist slope ground cover, with many seep spp.
- (F) BASS NOT defoliated.  
SUB saplings abun. in 10 to 20y age class.  
ASH stump ± 15 to 20y.
- (G) Photo looking down into <sup>3/4</sup> defoliation from ledge top.  
ASH + BC not defoliated.
- (H) e-p # 522
- (I) CIMN-Sphagnum small bog 12 to 13" deep max. cut N end. Small open pool at SW end. YB + RM + NYF with BC on edge. Is it worth returning to sample peat?  
Small bog, barely 100' across, < 1/4 acre.
- (J) → Wet spot peat 6" deep. Mkr hiking shoe pulled off by peat & sunk to till!  
CIMN-SPHAG-UVUL-GLYCERIA CAN.  
Surrounding BCs to 23" ± \$ Campyl.
- (K) Lightning-struck BC. Photo 25". OX + CAMPYL.
- (M) Summit Flora (see also 2006 notes, p. 283-5).  
BC dom. + YB to 22", RM to 16". COPTIS, PEILI, OX, MC,
- CIMNA. One tree on ground measured 44' long. Canopy 40 to 50'. AN, YB, B, a few SUB.
- (N) DR-NYF. Open <sup>stand with dom</sup> SUB > 80% defoliated, to 75%. Aster div. Still 1°.
- (O) 1st ASH, e-p # 523  
SUB to 18"
- (P) OST 12". PA, ARIS, TIAR moist slope. ATHELYP + PBRAUNII
- (Q) Multi-stemmed BC + SUB probably on old pasture. Below, open faert with nil humus. Much mineral soil at surface on terrace



Summit "Shin Cr. Mtn"  
(No L by error)

SNX blaze just W  
of summit NOT  
observed. See  
p. 283-5 for  
continuation  
westward.

283-11