

Plattekill State Forest

SE 3260' Summit, 2nd visit

to more carefully map extent of 10'

9/1/06

41-22

Site	P	Δp	A _p <u>R=0.915</u>	e _{calc}	e _{map}	time	R
(A) Trail head	29.69	0.00	—	—	2080	10:29	$R_1 = \frac{3260' - 2080'}{29.69 - 21.40} = \frac{1180'}{129''}$
(B) Switchback; begin bushwhack	29.10	0.59	540	2620		11:05	
(C) on log road	29.03	0.66	604	2684			
(D) blaze	28.90	0.79	723	2803		11:14	
(E) top 10' short ledge	28.69	1.00	915	2995	e.p.	11:30	
(F) top 10' long ledge	28.47	1.22	1116	3196	#513	12:12	
(G) Nw base of SW spur	28.40	1.29	1180	3260			
(H) Summit	28.40	1.29	1180	—	3260	12:24 12:45 lunch	
(I) Stump, 1st on S side	28.50	1.19	1089	3169		1:00	
(J) SUB terrace	28.56	1.13	1034	3114			
(K) on SE spur; end hike	28.52	1.17	1071	3151	3140	1:16	#515 e.p.
(L) stump, 1st on S side	28.47	1.22	1116	3196		1:35	
(M) Several stumps, S side	28.42	1.27	1162	3242	#514	e.p.	
(N) Summit	28.37	1.28	1180	—	3260	1:50	
(O) Large SUB + B	28.47	1.18	1089	3169			
(P) Stumps #298	28.54	1.11	1023	3103			
(Q) Summit on road	28.66	0.99	913	2993	3000*	2:30 to 2:43	*measured 5/8/06
(R) Switchback	29.05	0.60	553	2633		3:06	
(S) Trailhead	29.65	0.00	—	—	2080	3:29	
Additions on ascent between			<u>R=0.922</u>				
(P) Stump	28.60	1.09	1005	3085			$R_2 = \frac{3260' - 2080'}{29.65 - 21.37} = \frac{1180'}{129''}$
(Q) Top continuous 10' ledge	28.55	1.14	1051	3131			
(R) top Seep	28.51	1.18	1088	3168		NOON	

Blackberry will form thickets in 1^o stands, but is enhanced after logging. Blackberry thickets are not only caused by logging.

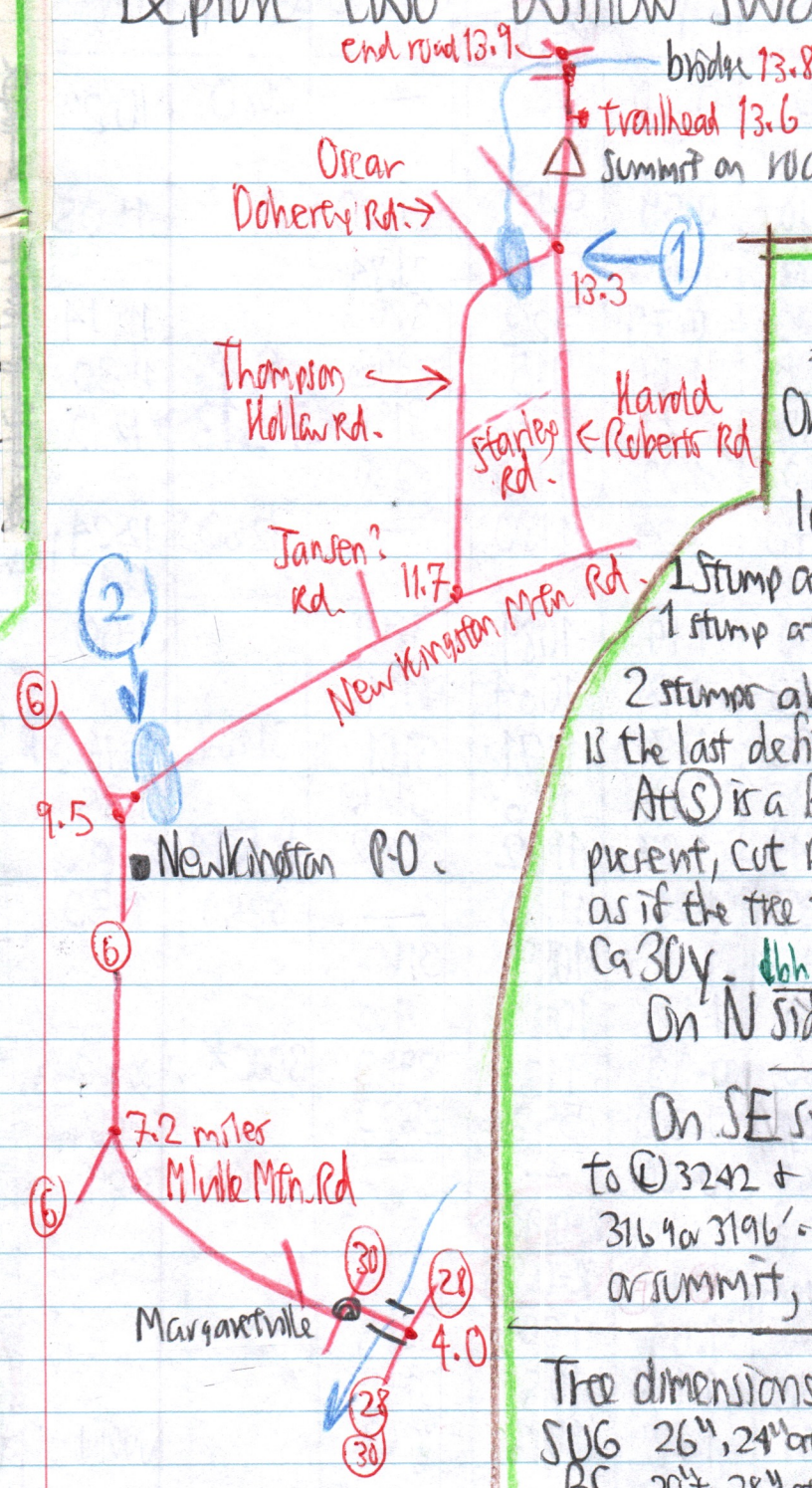
Mileage from 2810 (see separate distance file)

411-23

9/30

11.19

Explore two willow swamps: with some basket willow planted



LOGGING HISTORY 1970s

On W spur: Older road forks at (D) 2803 + the fork soon lost in RA thickets. Last roads seen

1 Stump at (E) 20y ± below the ledge 2980'.
1 stump at (P) 3085', about 30y.

2 stumps above (R) 3180', about 30y. This is the last definite logging site. Stumps few + At (S) is a BC stump base with log still present, cut part-way up into 2 segments, as if the tree turned cut useless to remove, ca 30y. dbh?

On N side, stumps climb to (N) 3103'

On SE spur, several stumps climb to (O) 3242 + one isolated stump at (I) 3164 or 3196'. Nothing on spur itself or summit, or E shoulder of summit.

Tree dimensions in lot growth:
SUG 26", 24" at (J). two 28", 28" dead (M)
BC 20" to 28" at (H). 24" at (J), 20" at (K)
BEECH 24" dead at (M)
PB Two to 28" (5/8/06)

Far between

Location of stumps

\$Camptoptera at (H) + (O) + (K), all 3000' + even but \$Internodia at (P) 3151 -
 \$Campt. is most abund on ridgelines where there are more canopy gaps with BC+YB
 dom, but occurs at (K) under subaswell. DPT + RA seem max aggregate than \$Campt.
 in filling the gaps.

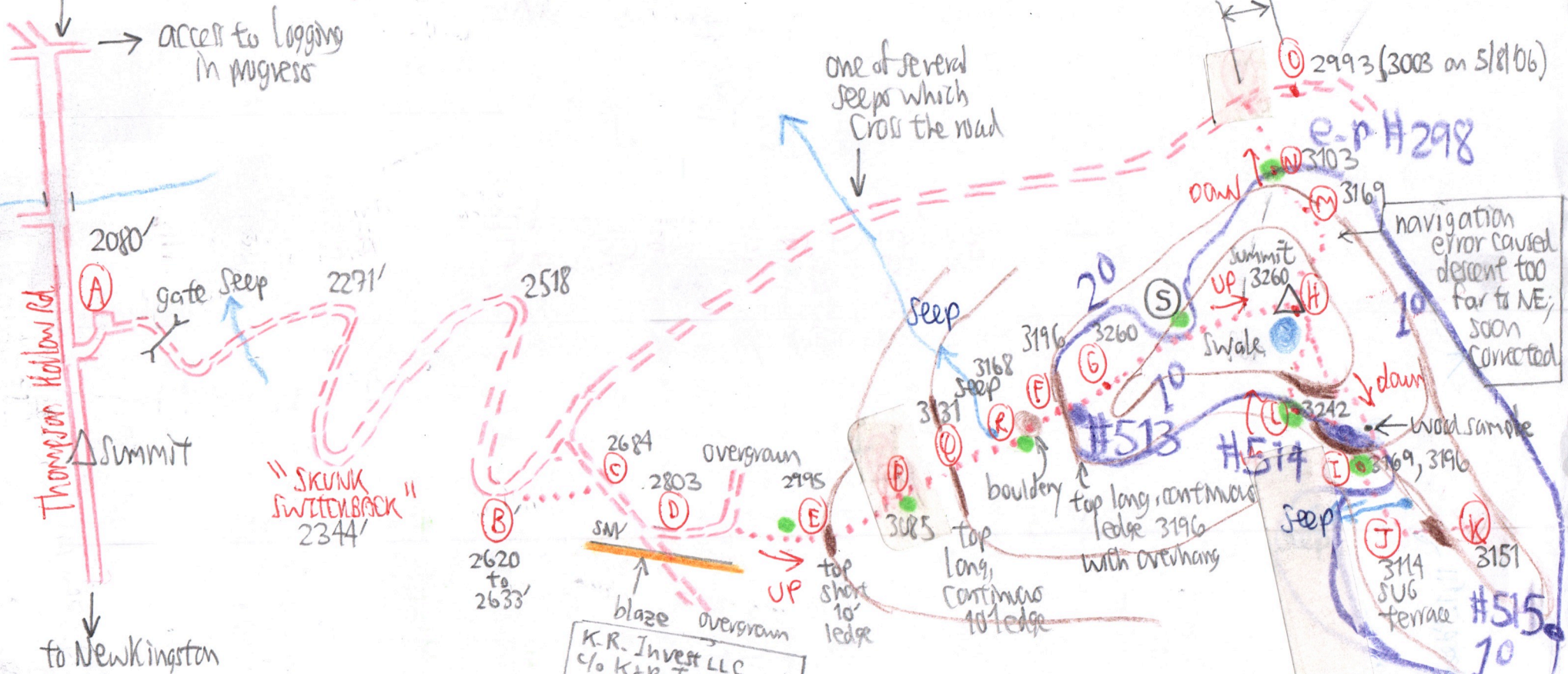
411-24

Logging noiter available from (E)

active logging in Col 9/11/06 available

end of town road

access to logging in progress



K.R. Invest LLC
 c/o K&R Tassinari
 380 Harold Roberts Rd
 New Kingston

1 acre ≈ $0.3 \times 0.35 / 2 = 0.05$ sq mile
 10 extent unknown

See logging history

on 4/11-19

2803 2995

(D) to (E) Solidago caesia, AA, Peili abun with a few ASM + OST

(E) to (P) OX- \$INT-SAMB-RA-RS-PELZ under SUB-B-YB-MO, defoliated at least up to here in June 2006 and 1/2 refoliated since

(P) RA thickets, B thickets, some YB, BC, MO

(Q) BC dom, some SUB + B. RA, PILLI- OX-MO- \$INT-AA

(R) Seep with IMP dom. sub dom. Noon sirens heard from Millville + maybe Arkville. Fewer open RA thickets locally

(E) Fewer RA openings 1st AM. SUB 70y broken off. No ddb!!

(G) RA thickets impenetrable at top narrow spur.

(G) to (H) BC 20" to 28". One cut but at (S) not removed with log in 2 halves. SUB 16"

(H) Summit. South side of swale has a 27" YB (lunch spot). The swale has Glycena nervata dom, CINN, AA, small Sphagnum patches, Scirpus cyperinus, China, Ox crinita

Linda's coll.

See sketch detail of swale).

Well-dr summit has \$Camyl dom. B thicket at SE end. VA, OX, AN, RA.

(H) to (I) 24" downed tree (natural fall) with WOOD samples between ledges.

(I) Two small wood samples from isolated stump. YB growing on stump 18' x 1 1/2" + maybe 10y.

Vegetation

Is this true in forest tent caterpillar regions? below spur

41-25

(J) Sub terrace, 24" BC. sub dom. Sub stands have less RA + DP thickets because SUB occupies the best sites and have fewest

Canopy gaps. ALLIUM seep with unknown graminoid (no fruits) another 24" BC, ARIS, 26" SUB. Raven heard.

(K) end hike on SE spur flat. RA locally impenetrable on spur. BC dom to 20". Canopy 60'. Some YB-SUB-B on spur.

(L) Several stumps. SURB adjacent with SUB. One has brown BC wood.

(M) Large trees on NE steep slope visited by mistake before navigation correction made to NW: 28" SUB, 28" dead SUB, 24" dead beech fell.

(N) Stumps on N terrace

(O) \$Camyl observed, the lowest.

(B) to (A) Does IMP pallida occur on drier sites than IMP carenis?

Eup perful. Smells sweet in fl, but Eup macul. does not have an odor. Solid. Can. 27' tall.

