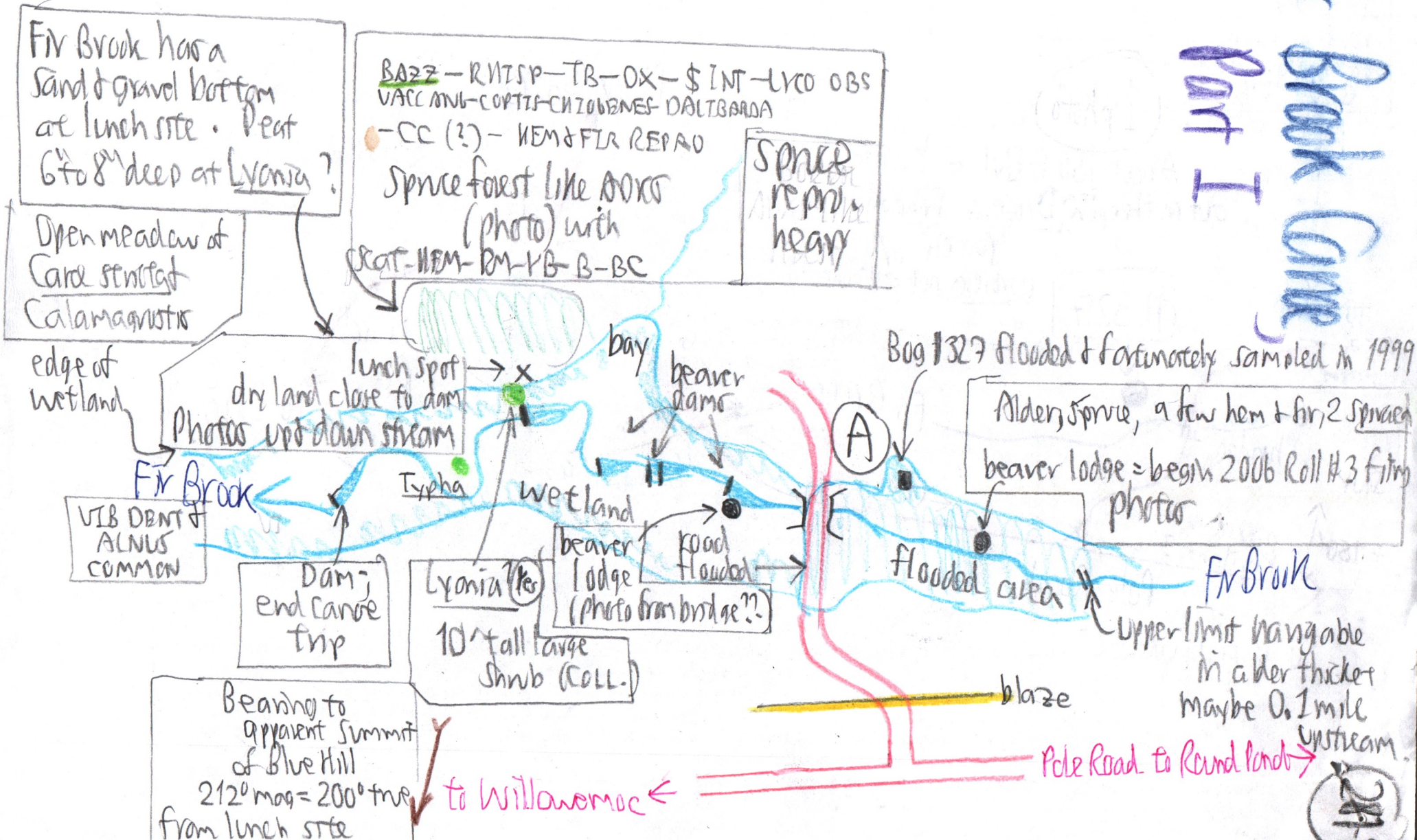


Field Notes 5/10/06 with Pete Senterman & his canoe

Potentilla pilosus above lunch site (1st sta in Catskills?)
At flooded bridge: IMP cotyledons, Ranunc sept-lys.

Fir Brook Game Part I



Big #327

Location # 327



This dirt road is shown on the Claryville Quad. 7 1/2'

1 photo

About 150 ft ENE of bridge out in the open ^a Drosera-Sphagnum patch (Drosera not disturbed)

327

to Camp at old farm

SNY

± 150'

private Kerilandi Inc.

Pole Road

to Williamsport

Fir Brook

← 0.45 mile

Ulster Sullivan County line pavement change

Black Bear Rd

← 0.45 mile



Round Pond

to Claryville

Field Notes 5/10/06 with Pete Senterman

⊗ MK flagged a 12" ±? NEM with a blue "escarade" long twister. Pete placed 5 sticks in the ground. Peat 48" deep here with probe, the maximum. Most places in the swamp forest 16 to 18" & a few to 2 or 3 ft to 3 1/2 h

Flora near ⊗
 SPR dom
 NEM
 CARP
 Chrysoeris
 Rubus pub
 VACC
 Coptis
 BAZZ
 GX
 VCASS
 VV
 Sphagnum abun.
 \$ Int

many small "islands"
 Caltha hummocky
 ERY forest
 Anemone floor
 Pine, Erwh 1 in 24"
 One, plus
 dead down pine
 with a 12" SPR
 growing out of stump

Open ex stretat Calamagrostis ^{dom}
 scattered RM, abun. Spiraea
 lat, some S. tomentosa,
 1 Vacc corymb
 largest beaver meadow
 in the Catskills

Sand bottom - could be
 at wash? Vib dent, SPR
 Caltha, few PIR
 at ⊗
 Polemonium along
 roadside

Fir Brook
 navigable
 above here

⊗ B Fir Brook not
 navigable here,
 but canoe could be
 hauled upstream
 a short stretch.

Fir Brook NOT
 navigable at
 either of these
 sites

⊗ C fishing
 access

Fir Brook
 brook

to Willanowad

Open area = view of
 Blue Hills ski slope

POLE 45

POLE 46

brook

Cabin

open field
 lawn

hummocky tend hike

⊗ Bog #328 (not searched for)

with gravel bottom 2 ft below wetland surface

→ Pole Rd. to Round Pond

POLE 49

281-13
 281-13

Fir Brook

2 photos upstream
 to Erwin Ridge

Mileages from Point (A) = 0.0

#328: Just E of Pole #49, the road crosses a low 5 to 10' summit between houses. Head due north down on SNY about 100 ft horizontally to bog. #328 is several feet E of the 1st windthrow 'cake, perhaps 50 ft from S. edge of bog.

#328
Box 328
281-1A

To Frost Va

(A), 0.0 mile is
Rove (47)

Black Bear Road

0.8

(B)

0.0

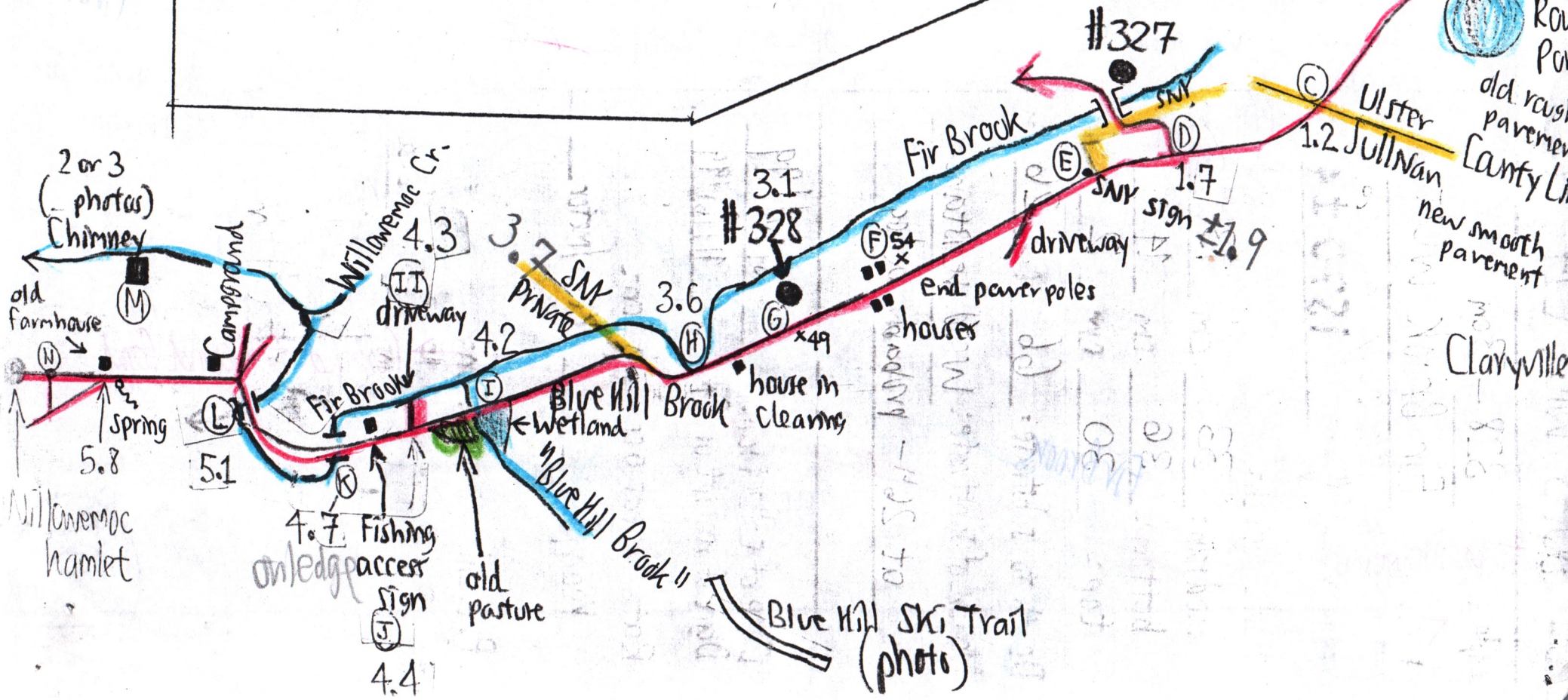
(A)



Rove Pond
old rough pavement

Ulster
1.2 Jullnan
new smooth pavement
County Line

Claryville



2 or 3
(photos)
Chimney

old farmhouse

Spring

Willowemoc
hamlet

Willowemoc Cr.
4.3
(II)
driveway

Campground

(L)

5.1

(N)

5.8

(M)

5.1

4.7 Fishing
on ledge access
sign

(J)

4.4

old pasture

3.7 SNY
PRIVATE

4.2

(I)

Wetland

Blue Hill Brook II

Blue Hill Brook

house in clearing

end power poles

houses

3.6

(H)

3.1

(G)

x49

(F) 54

x49

(E)

driveway

3.1

(D)

1.7

SNY sign

1.9

(E)

SNY

Fir Brook

#327

1.2

(C)

Ulster

1.2 Jullnan

new smooth pavement

County Line

Claryville

Blue Hill Ski Trail
(photo)

old pasture

4.3

(II)

driveway

4.2

(I)

Wetland

Blue Hill Brook II

Blue Hill Brook

house in clearing

3.6

(H)

3.1

(G)

x49

(F) 54

x49

(E)

driveway

1.7

(D)

1.9

SNY sign

1.2

(C)

Ulster

1.2 Jullnan

new smooth pavement

0.8

(B)

0.0

(A)

Rove Pond

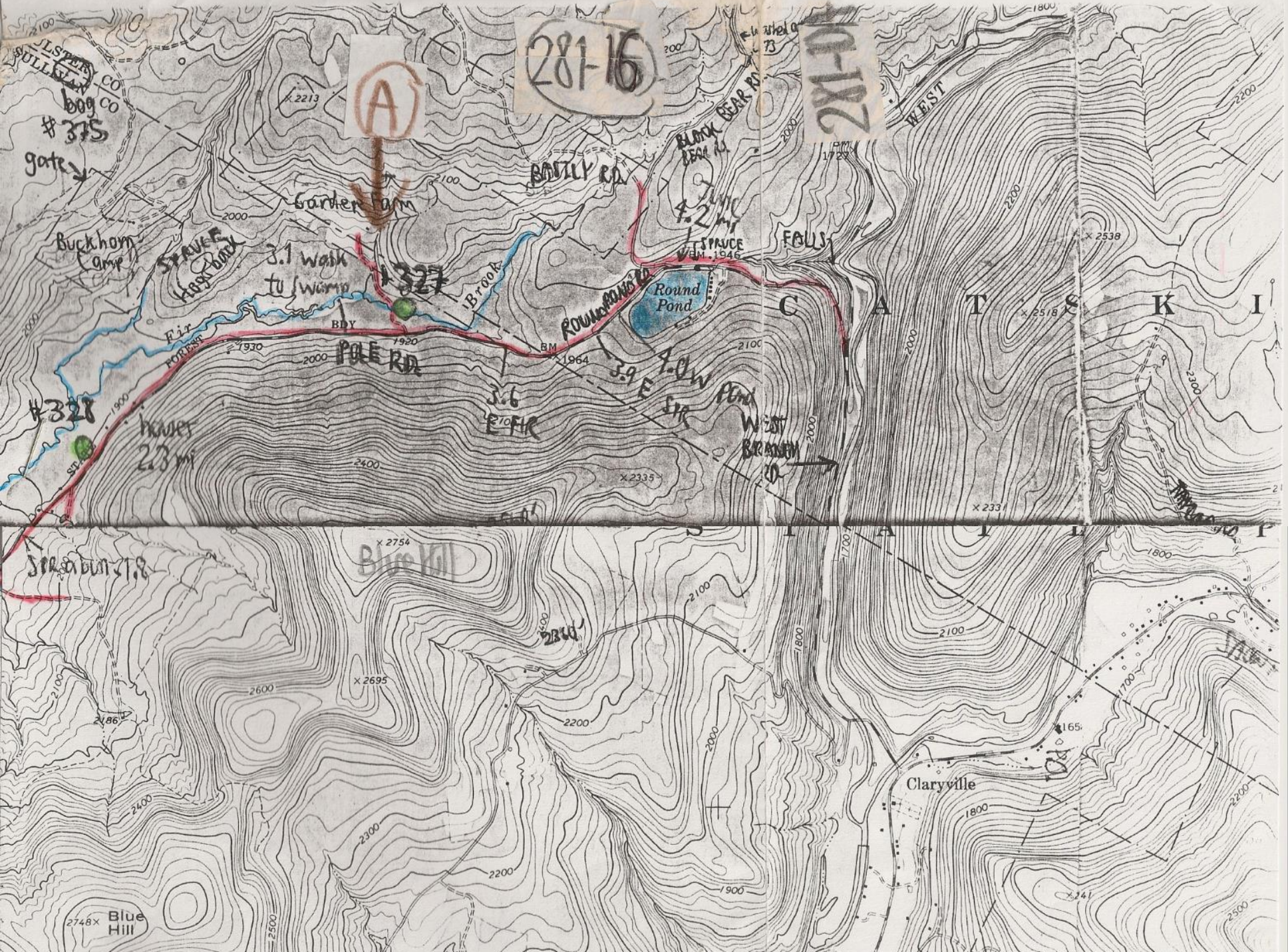
old rough pavement

County Line

Claryville

Blue Hill Ski Trail
(photo)

old pasture



281-16

A

281-17

#375

gate

Buckhorn Camp

SPRAUCE HOLLOW

3.1 walk to Swamp

327

BROOK RD

BATTLE RD

BLACK BEAR RD

1:24,000

SPRAUCE HOLLOW

FOUL

Round Pond

ROUND POND RD

POLE RD

36 E FIR

X 2335

39 E FIR

30 W FIR

WEST BRANDED RD

#328

hwy 23 mi

328

Blue Hill

2844

Claryville

Blue Hill

Suggested canoe access sites

(A) (B) (C) (D)

5/10/06



Suggested canoe access sites

(A) (B) (C) (D)

5/10/06

(D)

(C)

(B)

0.4 fishing sites

0.4 miles

0.7 W

Willowemoc

Chimney tower ruin?
 Old farm

Slawson Mtn

Red pine Plantations
 Norway Spruce

Norway Spruce

ANDERSON RD

CANTON RD

DELAWARE

AQUEDUCT

ROAD

ROAD

Brook

Brook

Joe

TRAIL

2267

BM 1908

BM 1815

BM 1861

BM 1825

BM 185

BM 184

BM 1876

X 2152

X 2245

X 2494

2560 x

4639

4638