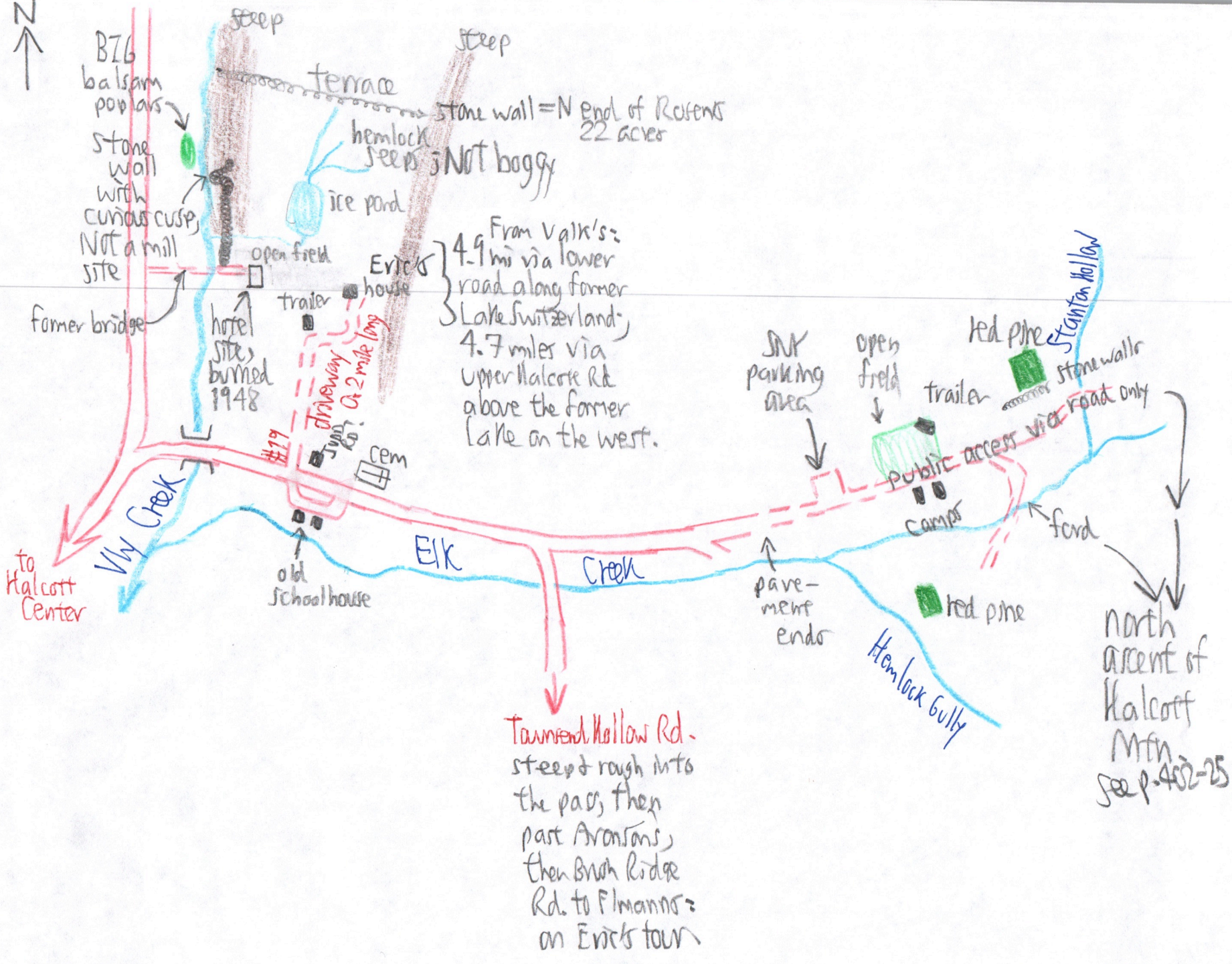


41.4 mi to Will Mtn 28873

with Eric Rasmussen 6/8/04

(402-20) Elk Creek Hollow, Halcott



Halcott Mtn from Elk Creek

402-21

With Eric Rosen
6/21/04

Site	P	Δp	Δe	e calc	e map	time	Rate
(A) Vly Cr. at Elk Cr. Rd	3002	—	—	—	1770		
(B) Parking area	29.68	0.00	0	—	2100	9:40 AM	
(C) Stanton Hollow	29.62	0.06	53	2153	2130		$\frac{2980-2100'}{29.68''-28.68''}$
(D) Eastern	29.50	0.18	158	2258			$= \frac{880'}{1.00''}$
(E) Plantation	29.32	0.36	317	2417			
(F) Last stone wall corner	29.22	0.46	405	2505			
(G) boreal ground cover	29.08	0.60	528	2628	e-p #100	10:45	= 0.880
(H) base of ledge	28.78	0.90	792	2892			barometric pressure steady or beginning to fall
(I) ledge top	28.70	0.98	862	2962		11:10	
(J) Ice storm opening	28.72	0.96	845	2945			
(K) COL between Halcott & Sleeping Lion	28.68	1.00	880	2980	2980	11:27	
(L) YB bum? lunch stop	28.64	0.04	37	3017		11:56 lv.	$\frac{3520'-2980'}{28.68''-28.09''}$
(M) long flat	28.48	0.20	183	3163		12:10 PM	$= \frac{540'}{0.59''} = 0.915$
(N) base of summit dome	28.46	0.22	201	3181		12:35	pressure falling
(O) SUMMIT HALCOTT	28.09	0.59	540	3520	3520	1:09 ar	
(P) Top of bum? YB	28.10	1.48	1420	3520	3520	1:35 lv.	
(Q) Base?	28.25	1.33	1275	3375		1:51	$\frac{3520'-2100'}{29.58''-28.10''}$
(R) Top of lower bum?	28.29	1.29	1237	3337			$= \frac{1420'}{1.48''}$
(S) Base? "	28.40	1.18	1132	3232			$= 0.959$
(T) Slope less steep	28.80	0.78	748	2848		2:20	with barometric pressure falling moderately fast
(U) Spring	28.87	0.71	681	2781			
(V) ASH	29.10	0.48	460	2560	e-p 210		
(W) SNR blaze ; stumps	29.18	0.40	384	2484			
(X) NEM young ; skid rd.	29.28	0.30	288	2388			
(Y) pasture	29.46	0.12	115	2215			
(Z) plantation on E	29.50	0.08	77	2177			
(AA) Elk Creek fork	29.56	0.02	19	2119	2080	3:12	
(B) Parking area	29.58	0.00	0	0	2100	3:22	
(A) Vly Cr. at Elk Cr. Road	29.88	←	←	←	1770		

Flora

1 Bigtooth at (E), the only live one seen

ASH - Very few with OST, only at (V) ^{one} 24^m
 may mark 10 → 20' entry pt
 Common at (E) + (E'). Few at (FF).

Few seep & spring areas, one at (F).

Another at (U) LAP, CAUL, TIAR, RTRISTE,
 OSMO, A DIV, VC, ALLIUM, NYORO, ARIS

Boreal herbs begin by (G) ^{2628'} OX-VA-AA
 S- CB-LL-RG M BEECH-SUG
 forest, moderately steep, but no trees
 large. SM at (H) with MM.
 Climax forest. No roads.

SORBS saplings & seedlings at (I) and
 a few widely-scattered near Kalcott
 summit, but no mature trees seen [Check
 field notes from W shoulder of Kalcott].

SUGAR MAPLE:

Taking over the plantation at (E) the
 old fields at (F) at least 50 to 75y.

Dom with Beech at (G) + mod-steep.

Scat. at (L) to (M) with BC & B dom.

(N) to (O) SUB + BC. SUB dom. below
 top ledge under Canister, S shoulder. A
 Common on Summit ^{but} dom by B & BC.
 No trees > 18" dbh.

(Q) to (P) A few but dom by B & BC.

(Q) to (R) " " " " " "

(U) 33" tree down, heartrot, ring count
 they 105y, fast growth, maybe 2/3 radius

1 OAK SEEDLING at (G).

HEMLOCK: Seen only at (W) + in
 understory

Blackberry: Thickets make difficult
 bushwhacking from (J) to (N). Combined with

Forest History

402-22

Agriculture: Pasture climbed
 On N side of Elk Cr to (E) 2505'

Plantation at (E) 2417' is very open,
 the pine & spruce scattered, with ASH &
 SUG natural reforestation outcompeting.

Plantation at (Z), S side of Elk Cr,
 seems also over- and overtopped by
 hardwoods.

Between (E) + (F) SUG & ASH reforestation.

Logging:

Between (W) + (Y), a few stumps
 between 5 & 10 years old. One skid
 road, overgrown with DP, seen.

1st Growth: May begin at much lower

elev. & cover a larger portion of
 Kalcott Mtn than previously thought.
NO log roads above (FF) and none above
 (W). The boreal ground cover at (G) and
 lack of pioneers above (V) suggest 10.
 Climax forest above (G) + (V), but few
 trees large above ± 18" dbh.

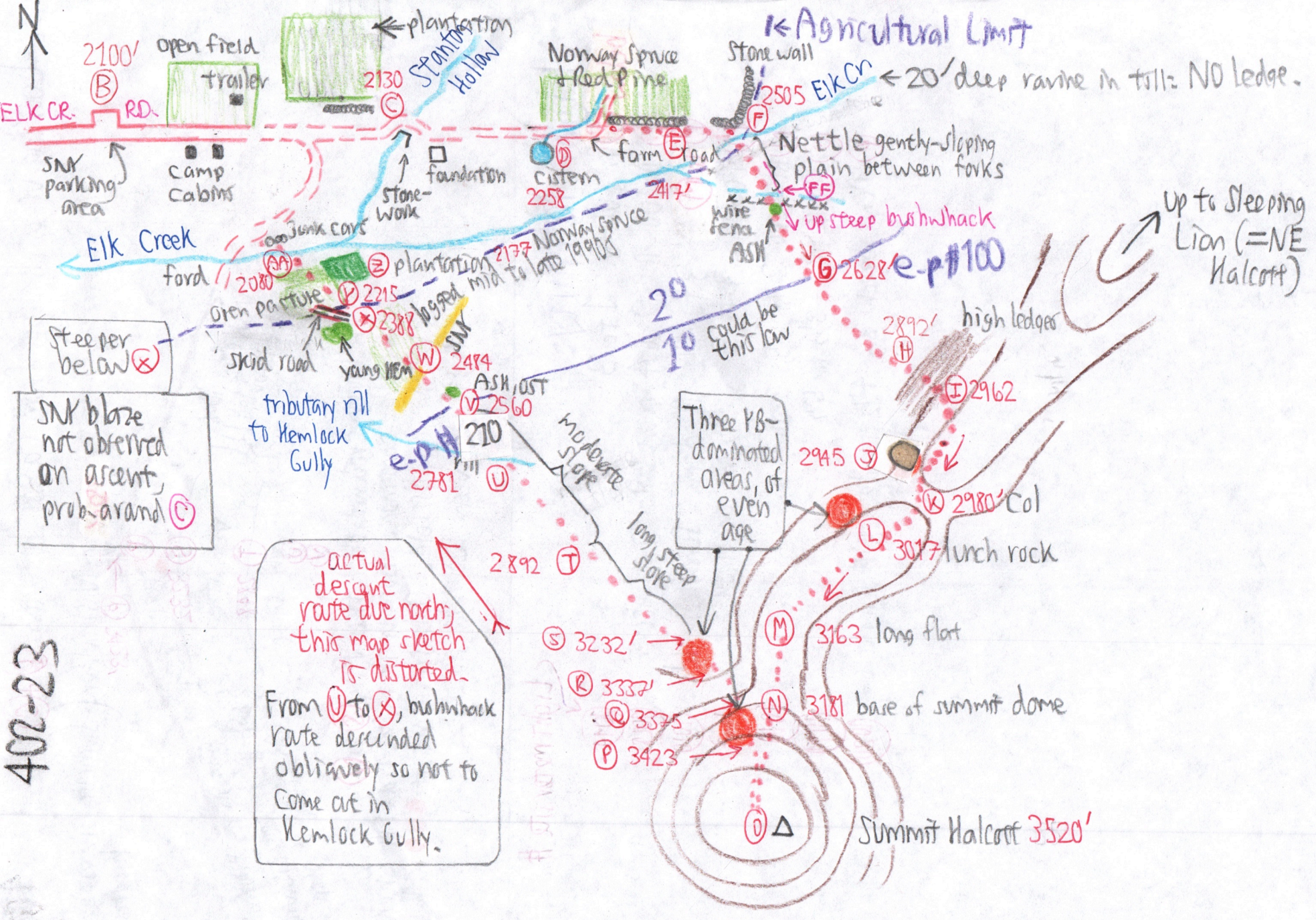
1908 burn?? The orange areas on the

Sketch map are dom by even-aged PB
 about 8 to 10" dbh. Three such pockets
 were seen, the latter two on descent
 of limited area spanning only 50 to 100'
 of elev. These patchy pockets surrounded
 by maturing SUB-B-BC do NOT suggest
 Schmitt's 1908 burn. The re-storm
 opening at (J), late 1990s, with a view
 W to Plattekill Mtn., suggests an
 alternate origin to the "burn" - maybe
 Wind, too.

(see diagram on back of map)

The lower-storied, older trees between (V) + (S) make a continuous
 bum up from Elk Creek IMPOSSIBLE.

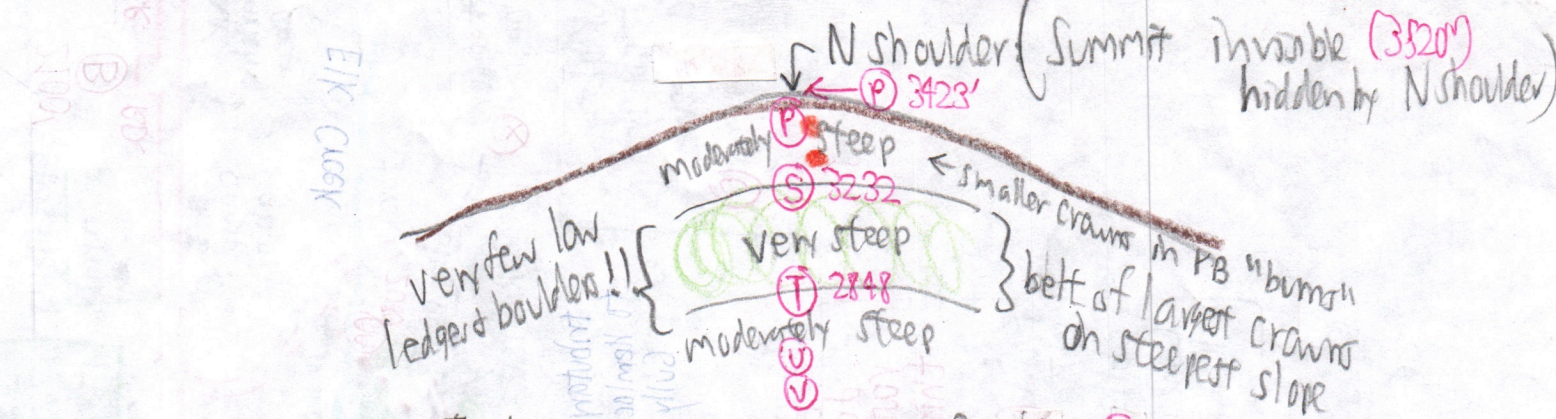
→ dense Camphyl., forest floor is invisible.



402-23

Looking up at Halcott from cabins between (Q) & (C):

402-24



The layer-crowned, older trees from (V) to (S) make a continuous hum up the mtn. from Elk Creek origin impossible. Only spot fires at (●●) with unburned tracts between could be possible.

Light intensity:

Light meter site #

6/8/04

Above (FF) in SV6-B. 1 to 3

(G) in SV6-B. 2 to 4 more boreal ground cover

(L) BC dom. 3 to 4 1/2 BC dom. Sun flecks 6 1/2

(M) BC dom. 3 to 5, 5 1/2 in sun fleck.

(N) BC-B-SV6 2 1/2 to 5, 2 to 5

(O) BC-B-SV6 3 1/2 to 5 1/2

(P) Dense beech 3, 4 1/2 (made marshy) 5 1/2 sun fleck

- (1014)
- (1015)
- (1016)
- (1017)
- (1018)
- (1019)
- (1020)