

Beaverkill Range: east end

Site	P	Δp	Δe	e calc.	e map	time	rate
(A) Quaker Clearing	29.44	0.00			2220	10:06 AM	
(B) Balsam Lake trail head	29.05	0.39	356	2576	2530	10:28	
(C) register	29.10	0.34	310	2530			$3360 - 2220 = 1140'$
(D) Black Brook; new bridge	29.27	0.17	155	2375		10:45	
(E) flat crest	29.08	0.36	328	2548			$29.44 - 28.19 = 1.25''$
(F) old pasture	29.14	0.30	274	2494			
(G) Gulf of Mexico Brooks <small>new bridge</small>	29.20	0.24	219	2439		11:15	$r = \frac{1140}{1250} = 0.912$
(H) Turner Hollow Tpk.	29.15	0.29	264	2484			
(I) Vly Pond outlet	29.18	0.26	237	2457			
(J) Swamp Bog #329	29.14	0.30	274	2494			
(K) Outlet to beaver meadow	29.20	0.24	219	2439			
(M) Junc. with old trail	29.20	0.24	219	2439	2410	11:45	
(N) Firs; cross brook	29.18	0.26	237	2457	2420		
(O) log road to N	29.12	0.32	292	2512			
(P) Cross brook	29.10	0.34	310	2530			
(Q) log road bridge to south	29.07	0.37	337	2557			
(R) trail fords the Beaverkill	29.05	0.39	336	2576	2550	12:10 to 12:30 lunch	
(S) beaver meadow, lower	28.98	0.46	420	2640		12:37 PM	
(T) beaver meadow, upper	28.94	0.50	456	2676	2660	12:50	
(U) Ash e-p-128 <small>vetch</small>	28.84	0.60	517	2767			
(V) blaze SW-NE top steep	28.54	0.90	821	3041			
(W) 1st bog	28.52	0.92	839	3059			
(X) 2nd bog <small>e-p-255</small>	28.48	0.96	876	3096			
(Y) stumps	28.44	1.00	912	3132			
(Z) 2nd road <small>e-p-256</small>	28.38	1.06	967	3187			
(AA) 3rd bog. Peat sample #321	28.20	1.24	1131	3351		2:00 to 2:35	
(BB) Summit 3360 East	28.19	1.25	1140	3360	3360	2:38	

BB	Summit 3360 East	28-19	1.25	1140	3360	3360	2-38
CC	last fir	28-26	1.18	1076	3296 more like 3330		
DD	COL	28-29	1.15	1049	3269	3320	
EE	Knob 3340	28-24	1.20	1094	3314	3340	
FF	Summit, twin 3360	28-18	1.26	1149	3369	3360	3-15
GG	COL	28-34	1.10	1012	3232	3180	
HH	Summit 3360 West	28-16	1.28	1167	3387	3360	3-38
II	COL	28-25	1.31	1145	3115	3240	
JJ	Summit 3377	28-13 28-16	1.28 1.18	1167 1188	3387 3378	3377	3-55 to 4-15
KK	col	28-30	1.04	991	3211	3300	4-26
LL	1 ledge down SUB dom	28-38	0.96	942	3162		
NN	brook flows W 730' ^{SUBS}	28-54	0.80	785	3005		
OO	huge SUBS	28-72	0.62	608	2828		
PP	Ilex mont, 30" ash	28-80	0.54	530	2750		
QQ	base of ledge talu	28-94	0.40	392	2612		
RR	wet terrace	29-00	0.34	334	2554		
SS	SUB cove	29-05	0.29	284	2504		
TT	hem	29-26	0.08	78	2298		
UU	stump e-p-257	29-30	0.04	39	2259		
VV	log road, SW-NE	29-38	-0.04	39	2181		
WW	Cross Bearkill	29-42	-0.08	78	2142	2200	5-38
AA	Quaker Clearing	29-34	0.00			2220	5-48

280-23

base elev = 2220

base p = 29.44

 $r = 0.912$

r =

$$3377 - 2220 = 1157'$$

$$29-34 - 28-16 = 1-18''$$

$$r = \frac{1157}{1180} = 0.981$$

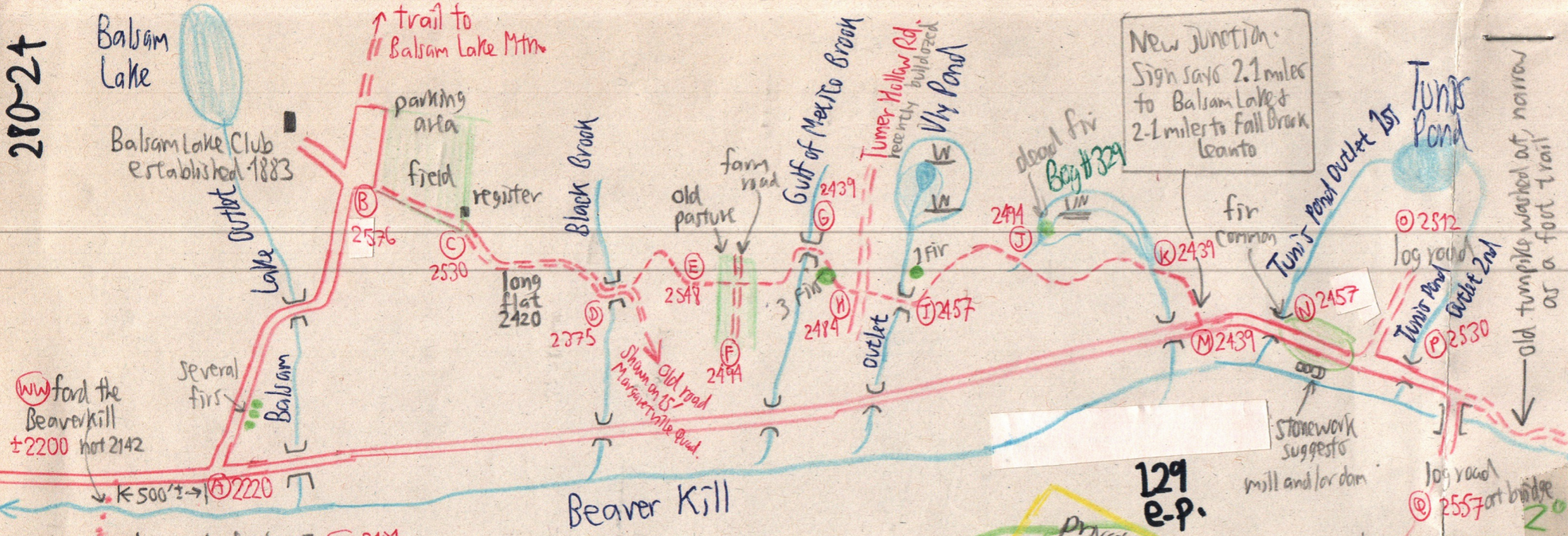
Recalculate r
using (WW), not
(A) for base
elevation.

280-24

Balsam Lake
Balsam Lake Club established 1883
parking area
register
field

↑ trail to Balsam Lake Mtn

New Junction
Sign says 2.1 miles to Balsam Lake & 2.1 miles to Fall Brook Leanto



Turnpike ford at old bridge abutments
B 2576

Beaver Kill

log road, SW to NE W 2181

stump W 2259
ep NEM TT 2298
ep 257

SUG COVE; below talus
Wet terrace below talus, chunk of vertical SS slid down base of ledge & talus @ 2612
R 2554
dammed giant sug
open fern glade with lockhart
Photo # 945

30' ASL
3005
3162
ledge
SUMMIT 3377, a small summit
col 3240
SUMMIT WEST 3340
col 3180
TWIN SUMMIT 3360
long col 3320
Knob 3340
col 3320
VV-TMN Swamp

sug spring below summit

last fir ± 3330
Summit 3360 EAST
blaze not observed

Peat Sample #321
Photos # 941-944

129 e-p.
private lot 2600

these log roads must connect

Vaccinium openings
BC stumps

log road on contour
private lot

fir only at the 3 bags

ep 122
e-p 122

ep 255
1st bag
2nd bag
3rd bag

blaze observed
flat area on top ledges
3041

ASH below ledges
2967

spring
begin bushwhack

fir lower beaver meadow
turnpike flooded; trail rerouted
Photos # 939 & 940
Upper beaver meadow
T 2676

to the Neversink

ep #128 is in error. The whole area is 1°. See Maps
noted 12/8/07

SUMMIT 3310 (see notes of Oct. 1990)

to Devils P Mtn visible

Present Vegetation

Forest History 280-25

Present veg. Continued

- (C) to (D) YB 70" on stilts, 1 ASH, 1 OST, NO FIR.
- (E) 254' flat crest = widely scattered 30" BC, YB, BC, several scat ASH
- (F) open DP woods, AMEL, CRAT, old farm road through pasture 2494
- (G) Stilted 12" YB & stilted 8 1/2" NEM to (H) 1st FIR 9" & 2 more nearer brook to SW along trail
- (I) 2457, Panax, Anemone.
- (J) ^{Bog} Swamp dead FIR, NEM-YB-CINN-SPHAGNUM
May need C14 dating done ✓ NEMO ✓
Chirogenes ✓
- (K) FIRS common in understory
- (L) FIR-NEM-YB-VA-B
- (M) FIR common.
- (N) Saxifraga penn. (the tall sp), Polemonium, Stellaria, Cardamine penn (?) 2 photos
- (O) ASH
- (P) 1st bog: 6 live fir to 30' x 6" with seedlings. CINN-SPHAG-BC-YB-RM
- (Q) 2nd bog: VACC openings on NE edge. 6" to 12" to dense gray silty-sandy till, a bit shallow to sample for C14. Coptis, SPHAG, VACC, VV 30" NEM down-BC at W edge
- (R) BC
- (S) 3rd bog Peat sample #321 4 photos
VACC OXY, KALMIA POLI, CHAMBEDORNE, COPTIS, CINN, FIR ✓
 Sample at 20 to 22 depth just N of pond. Brown partial peat between live Sphagnum & black peat.
- (T) Last fir. ✓
- (U) VV-CINN swale. BC d
- (V) YB-MO-BC-B-S 3340' knob on narrow crest.
- (W) to (X) Long col: BC dom.
- (Y) Summit Twin 3360: BC-B-RM ERY-CLAY-S-OX-STREPT
- (Z) to (AA) 15" SURE ↓ SUGS at spring
- (BB) CB, LL in COL
- (CC) W 3360' Summit: B-BC codom. dense B saplings Several small SUG to 6". Continued at (C)

- suggests a stump long gone. No visible stumps.
- old pasture Stumps ±30 years, no bark, but flat tops (i.e. not eroded by decay). → suggests stumps >> 30 years.
- 30 yr. stumps → what's stonewall?
- (1) log road to N
- (2) main log road crosses bridge over Beaverhill to south
- (U) to (X) may be 1st growth, but then
- (X) log road at W edge of 2nd bog. Several stumps of BC without bark, maybe 1774?
- (V) Max BC stumps
- (Z) 2nd log rd. Why weren't the log roads?
- stumps noted in 1973 at (X) but (Z)? Could logs have followed in 1974 or 1975?
- (AA) to (UU) ALL 1st GROWTH!
- (UU) stumps maybe 40 years

- (II) SUG to 6" Several
- (JJ) Open N shoulder dom by S camp. YB-MO-BC-B MC-ERY Canopy to 35' x 18" Unusually small dome summit for Catskills. Photo #
- (KK) BC-B-YB in col
- (LL) max SUG 1 ledge down from col
- (NN) SUGS to 30"
- (OO) enormous domed SUG with DBH the length of the tile spade, nearly 48" Several ASH, OST PA-ARIS-DENT-ALLIUM
- (PP) 30" ASH ✓ Ilex mont
- (RR) SUGs to 30" on wet terrace
- (SS) SUG core
- (TT) 1st NEM
- (WW) CARP

