

The Road That Couldn't Be Built: ~~The Kautevkill~~ 512-1

The George Harding Road

With Mt. Top Hist-Soc. 6/24/89

Justine Nammel to
Bob Gildersleeve
Doug Numm (?)

(I) ~~Turnpike~~ to Hotel
Kautevkill

Site	p	Δp	Δe	e	Map e	Time
(A) Trail base: Whites Road	31-00	0.00	0	850'	850'	9:15 AM
(B) Jc. spur trail to (23A)	31-04	-0.04	40	810'	810'	
(C) SNY blaze	30-86	0.14	140	990	950 [Hiking trail map]	
(D) Doswood, Flowering Pitch Pine	30-79	0.21	210	1060		
	30-70	0.30	300	1150		
(E) Register & lookout	30-67	0.33	330	1180	±1200'	
(F) Cross brook = ford	30-52	0.48	480	1330	1330'	
(G) BASS	30-40	0.60	600	1450		
(H) 1st stone culvert	30-30	0.70	700	1550		
(I) Trail bend	30-26	0.74	740	1590	1580'	± 11 AM
(J) 2nd stone culvert	30-14	0.86	860	1710		
(K) Switchback	30-12	0.88	880	1730	1740'	
(L) SS over SH photo	29-86 29-80	1.20 1.24	1200 1240	2050 2090		
(M) Jc to Halfway House	29-70	1.30	1300	2150	2100'	
(N) Jc Escarpment Trail from Lapman Monument	29-66	1.34	1340	2190	2200'	
(O) Gneiss quartzite	29-54	1.46	1460	2310		
(P) 1st Spruce	29-48	1.52	1520	2370		
(Q) Jc Escarpment Trail	29-40	1.60	1600	2450	2430'	
(R) K Hotel = S Mtn.	29-36	1.64	1630	2480	2480'	12:35 PM
(S) Scute Rd. Parking Area						± 3 PM
(S) Camase Rd. = S Mtn to Scute Rd					2480 to 2070'	

Rate: $\frac{\Delta P = 31.00 - 29.36 = 1.64''}{\Delta e = 2480' - 850' = 1630'} = 0.994 \approx 1$

Trees

- White Pine (A) (R) coded
- Red Pine (E) at 1180'
- Pitch Pine 1 (D) at 1150'
- Hemlock (E) (S)
- Red Spruce (P) (R) (S) 2370' min.
- Red oak 2 (A) (F) above (K), dom (N), (O) (S) dom.
- Ch oak 3 (A) (K) above (K), (N) to 2190'
- Wh oak 4 (A) 850' only.
- Paper birch (A) (F) (O) (R) (S)
- Black birch 5 (B) (F) (G) (K) above (K) to ± 1800'
- Chestnut c (B) (F) above (K), (S) to ± 2200'
- Butternut (E) (S) to ± 2200'
- Shagbark 7 (A) photo, (G) (I) to 1590'
- Pignut 8 (A) 850'
- Bigtooth (C) (K), seedling of (B)
- Trembling (R)
- Amel (A)
- Sug (A) (F)
- MM (S)
- MO (A) (R) (S)
- RM (A)
- BC (A)
- Fl Dogwood 9 (B) (C) to 990'
- Gray Dogwood (A)
- Sass 10 (C) to 990'
- Beech (S)
- BASS (G) (S) 36" near dead.
- ASH (A) (F) (Q) (R) (S)
- OST (A) (S)
- ROBINIA (B)

Shrubs & Lianas

- Hamam (B) (E)
- Sumac (A)
- Va-creeper (C)
- Pussy willow (E)
- Nuckle berry (A)
- K lat 11 (A) (D) above (K), (N) to 2190'
- Grape (A)
- Vib acer 12 (A) above (K), (O)
- CNC (B)
- Scrophus 13 (B)
- Comptonia 14 (D) (K)
- Rhodo ros (E)
- Vacc vac below (C)
- Comurug 15 (K) (K)
- Dierilla (K) (K)

Herbs

- Asclepias variegatal. (A) (C) (F)
- Lysimach quadr 16 (B)
- A dn (B)
- Ptendum (C)
- Desmodium (C)
- Melampyrum (E)
- Aureolana? (K)
- Draba? above (K)
- Asclepias macro (K) (K)
- AN (K) (K)
- Nuphar (R) reservoir.

Bum index
16

512-3

Cabaret home of Alan Herschkowitz

ledge on north side of reservoir has strike 295° magnetic = 282° true, slightly N of W!!

bridge closed to vehicles to Laurel House former parking area

Connecting trail to Escarpment Trail

to South Lake cistern
South Mtn. 2480' (R)
Kaaterskill Hotel Site
Shale pit X
clearing

Escarpment Trail to Otis Summit, 2450'
Spruce, 2390' on flat terrace
Til with gneiss, 2310'

Escarpment Trail to Layman Monument
2190' (N)
2150' (M) trail to Halfway House Lookout

photo SS over SH overhang ledge
2090' (L)

3rd
big boulder
2050' (KK)
Switchback 1730' (K)

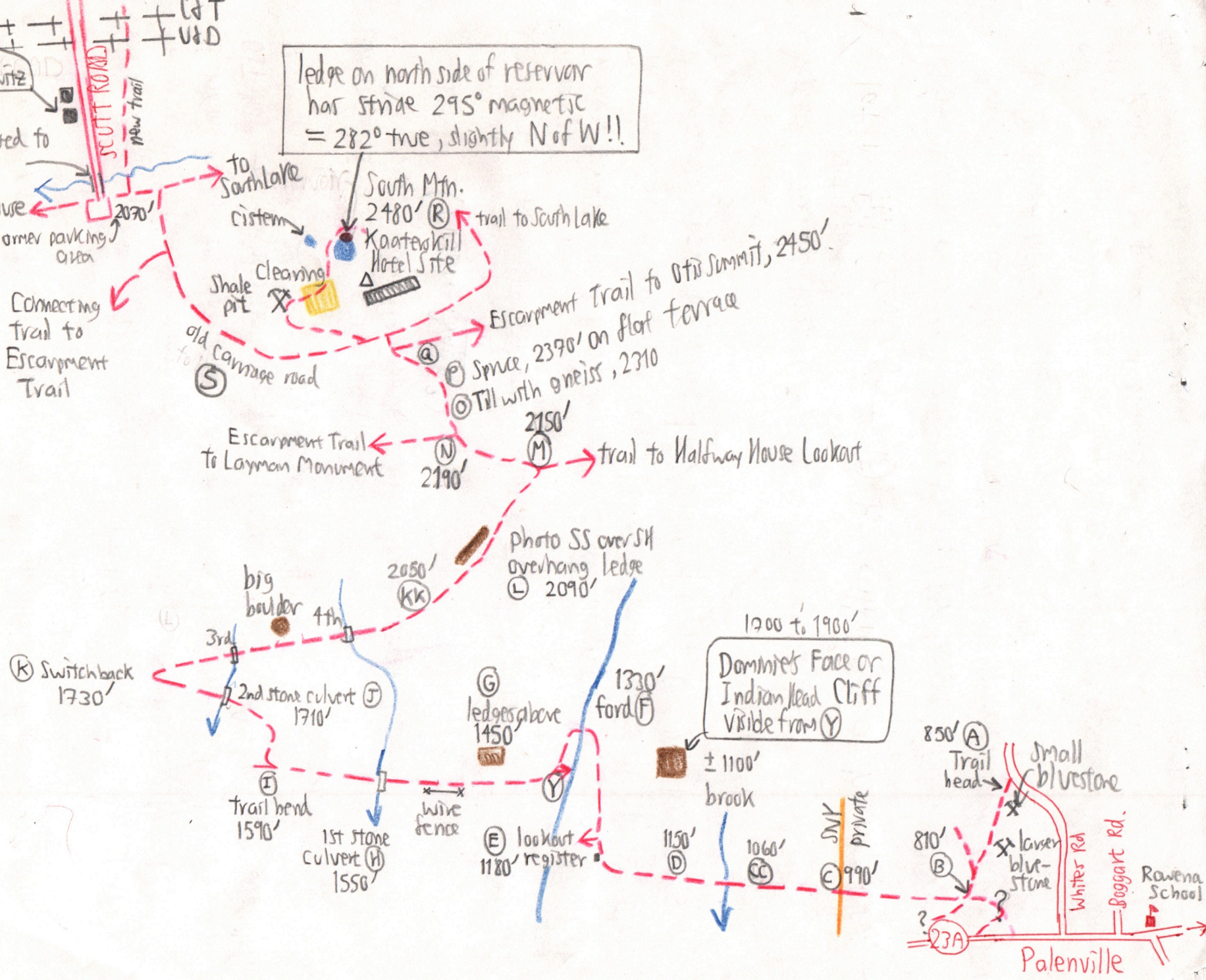
2nd stone culvert 1710' (J)
trail bend 1590' (E)
1st stone culvert 1550' (H)

ledges above 1450' (G)
wire fence
lookout register 1180' (E)

1330' ford (F)
± 1100' brook
1150' (D)
1060' (C)
990' (E) S.M.K. private

1700 to 1900'
Dominie's Face or Indian Head Cliff visible from (Y)

850' (A) Trail head
Small bluestone
810' (B)
larger bluestone
Whites Rd
Boggart Rd.
Palenville
Rawena School



More notes on Vegetation

512-4

The whole Escarpment from 850' to 2480' on S.Mtn. has been disturbed & dom. by oaks. No old growth, nor Northern Hardwoods dominant anywhere.

Gypsy moth defoliation intense along Whites Road trail base with scarcely any leaves left. No buds either makes I.D. by bark only. Photo of hiking crew with defoliation above & of snag trunk with larvae. OST has only lvs defoliation, young fruits intact. At (K), some Gypsy moth damage on Red Oak, but nil by (C) where dominant.

Unknowns:

Asclepias = wh fls, ^{broad} opp lvs, umbels loose, shade-tolerant

Draba (could be Arabis?)

Aureolana

Cleanns wof hotel site still open because of topsoil & till removal. Site of barns, etc. Ravine:

In area (E) → (F), several stems 24" to 30". Max SUB, but still much PB, ^{Red} ADK & OAK.

The master ravine may not have burned severely or not at all, but other disturbances have occurred: Landslides, floods, Oct '87 ice storm, possible logging.

Wire fence above (C) could have been a retaining wall for canyons?

Not barbed.

K lat in full flower up to (F) but still in bud at highest elev.

Till at (C) with quartzite & gneiss cobbles; MK thought Potsdam & ADK erratics. Bob Gilderleeve suggested conglomerate pebbles from nearby source in Devonian rocks. One gneiss cobble (2") collected.

Spruce begin at 2370' (P) in understory, up to 4" x 15', no mortality. More around Reservoir on summit (all saplings) and again around (S).

White ash seedlings abundant around Reservoir on summit.