

Spruce-Fir Station, Lake Heloise

June 22,
1989

prior to lecture at Mt. Top Hist. Soc., Haines Falls, on RRS 561-6

Owner is Ted Davis (518) 734-3266, spoken to on phone. Met his daughter (?), Karen.

Jack Sencabaugh suggested that the area be checked.

The firs number in the hundreds (abundant), most small to medium-sized, 4" to 7" DBH x up to 30'. Nearly all are understory to mature SUG-RM-PB-BC-Hemlock-YB; this stand had been probably a patchwork of pastures & cut-over woodlots. One mature fir was seen, just SE of the shack on "C" trail near "BB" trail junc. - ca. 60' tall x 15" DBH & a probable seed source; it had been open grown with persistent branches.

Four small red spruce were seen, all close together & just off the "A" trail a few minutes walk from Campsite #120. Three are 2" x 10' and the fourth 4" x 20', under SUG-RM. No mature red spruce noted. Crataegus adjacent.

Beyond the fir grove to the NE [vicinity of juncs. "A" with "H" and "X" trails] are OST, CARP, ASH & OAK. Several white pine surround the small open field. At Junc. of "A" & "AA" trails (north junc.) are Hems to 24".

The "A" trail to & past the red shale pit is an old log and/or farm road. Many ski trails are.

The Escarpment, including Mts. Gingseng & Hayden, was hiked in 1980, and no spruce-fir were noted. This Lake Heloise spruce-fir station is at elev. 1970' to 2100', in a cove.

WHITE BIRCHES SKI TOURING CENTER

WINDHAM, NEW YORK 12496

F.S. DAVIS 518-734-3266

TRAILS:

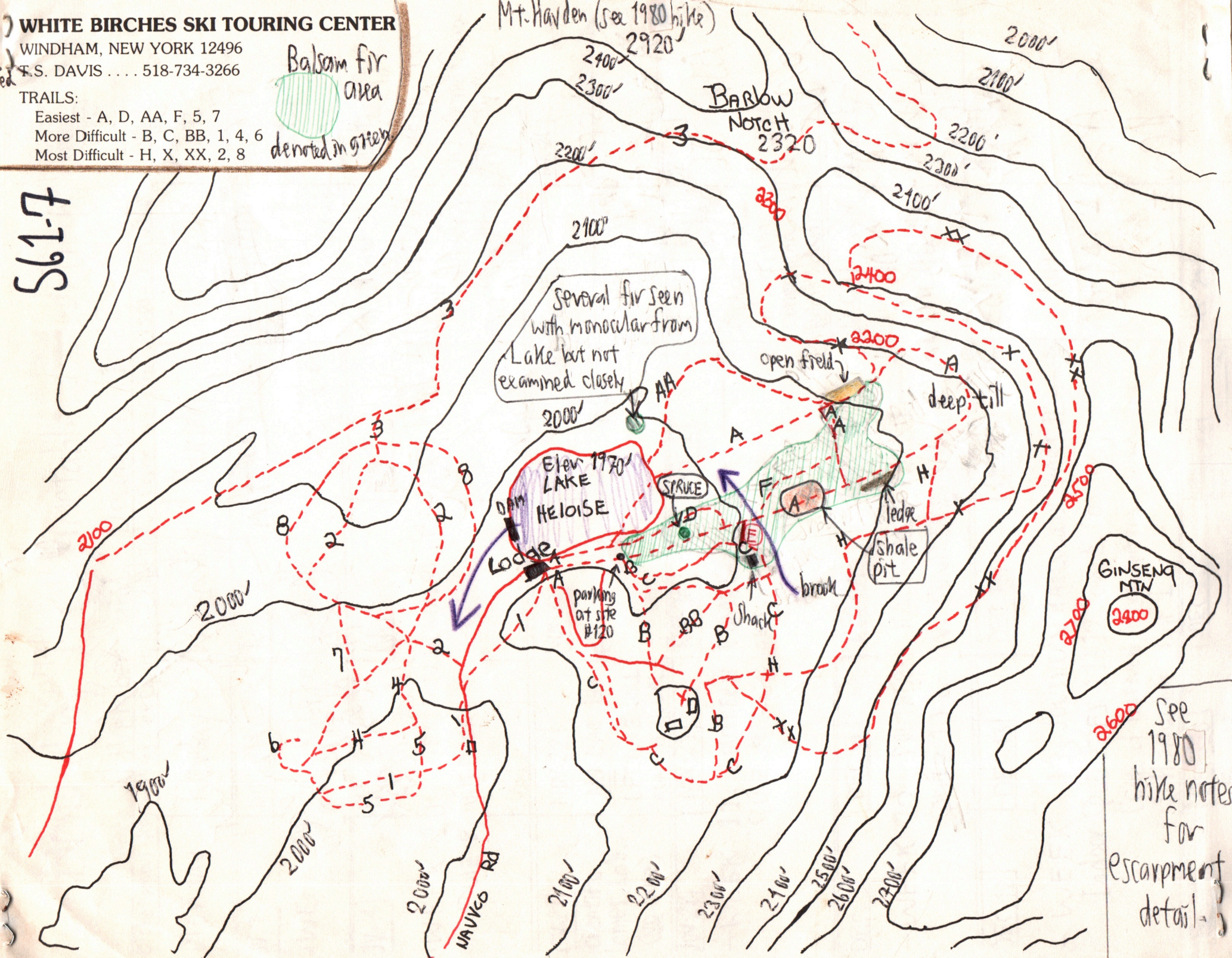
Easiest - A, D, AA, F, 5, 7

More Difficult - B, C, BB, 1, 4, 6

Most Difficult - H, X, XX, 2, 8

Balsam fir area
denoted in green

5617
F-19S



See 1980 hike notes for escarpment detail.