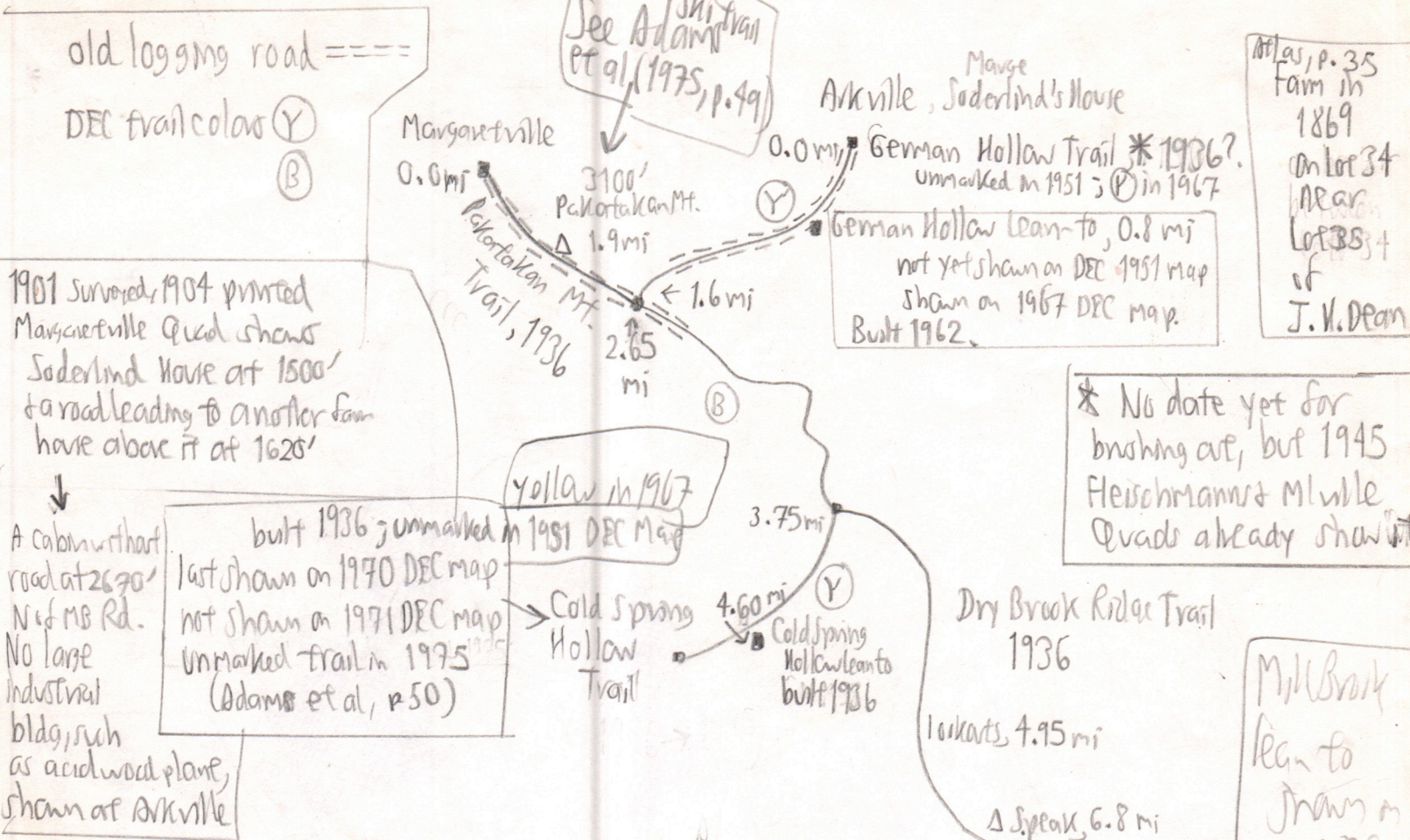


# Dry Brook Ridge Trail History

5/18/89

296-1



Atlas, p. 35  
Farm in  
1869  
on lot 34  
near  
lot 35; +  
of  
J.V. Dean

\* No date yet for  
brushing cut, but 1945  
Fleischmann & M.ville  
Quad already shown

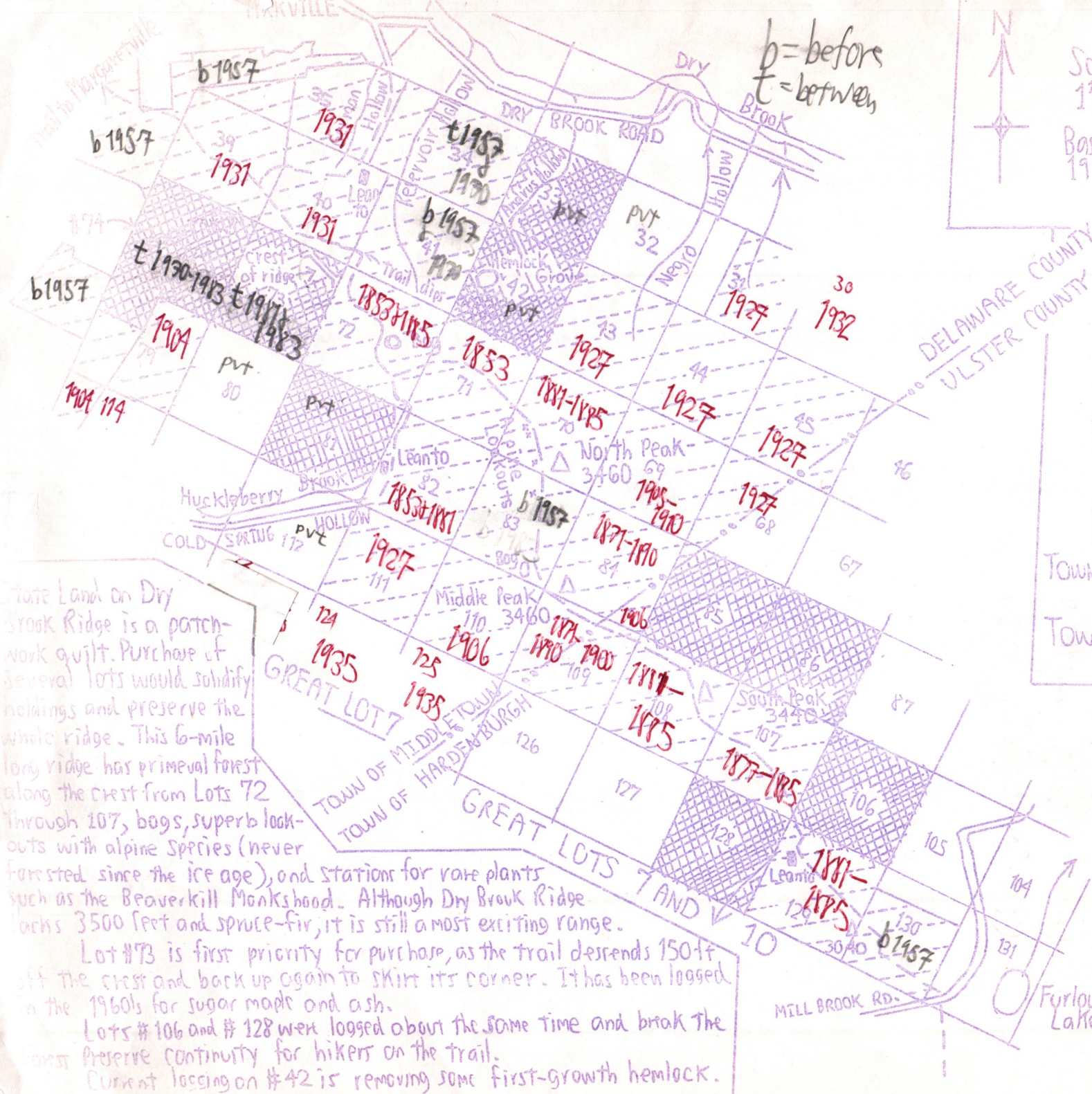
Mill Brook  
lean to  
shown on  
1935 DEC  
trail map

wade worth, (1982) p. 782  
Bennett & Masia (1974), p. 183  
Adams, Cocot & Greenman (1975) pp. 60, 49  
McMartin & Kick (1985), p. 198  
DEC 1935 = no trails yet  
DEC 1938: p. 14 has 2 lean-tos, not 3  
DEC 1951 - pp. 35, 17  
DEC 1967 - p. 17

Dry Brook Lean-to, 7.9 mi  
See Bennett & Masia (1974) p. 183  
See Adams et al (1975) p. 50: "wire fence protects Yans Spruce plantation"  
Relocation E of plantation  
Mill Brook Road 9.05 mi  
Delta Knobs, 8.5 mi  
Delta Speak, 6.8 mi

Adams et al, p. 60 state that German Hollow Trail was developed as a ski trail in the 1930s by C.C.C. Also Pakotakan Trail.  
No mention of Cold Spring Hollow trail in Bennett & Masia

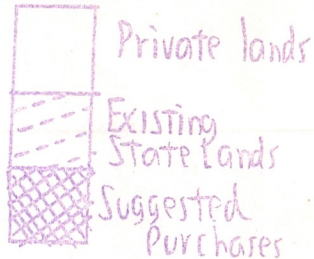
1936 NSAR, p. 43: "In the C, the trail was completed from M.ville along the crest of Pakotakan Mt & DBR to the MB Road, connecting with the trail up BL Mtn."  
p. 44: open camp (lean-to) at Dry Brook and Cold Spring Hollow



b = before  
t = between

Scale: Roughly  
1 1/4 inches to the mile.

Based on Catskill Land Map,  
1970 Edition



Suggested Purchase  
#3:  
DRY BROOK RIDGE,  
TOWN OF MIDDLETOWN,  
DELAWARE CO.  
TOWN OF HARDENBURGH,  
ULSTER CO.

State Land on Dry Brook Ridge is a patch-work quilt. Purchase of several lots would solidify holdings and preserve the whole ridge. This 6-mile long ridge has primeval forest along the crest from Lots 72 through 107, bogs, superb look-outs with alpine species (never forested since the ice age), and stations for rare plants such as the Beaverkill Monkshead. Although Dry Brook Ridge lacks 3500 feet and spruce-fir, it is still a most exciting range.

Lot #73 is first priority for purchase, as the trail descends 150 ft off the crest and back up again to skirt its corner. It has been logged in the 1960s for sugar maple and ash.

Lots #106 and #128 were logged about the same time and break the forest preserve continuity for hikers on the trail.

Current logging on #42 is removing some first-growth hemlock.

Field Notes  
Camp  
296-2

Michael Kudish  
January, 1973

5/18/89

# Dates of Land Acquisition by SNY: Dry Brook Ridge

296-3

Great Lot 7, Garnetson Tract, Hardenbergh Patent.

blank Private  
SNY = public

Lot #	DEC PUBLICATIONS						Hiking Maps CCCD 1981
	1899 MAP	1920 LANDLIST	NYSAR 1921-1956	1957 MAP	1970 MAP	1983 MAP	
30 ✓ (51ac)			1932 ✓	SNY SW 1/3	SNY SW 1/3	SNY SW 1/3	
31 ✓			1927 ✓	SNY E 1/2	SNY E 2/3	SNY E 2/3	
32							
33							
34 ✓					SNY	SNY	
35 ✓ (156ac)			1931	SNY	SNY	SNY	
39 ✓ (157ac)			1931	SNY	SNY	SNY	
40 ✓ (159ac)			1931	SNY	SNY	SNY	
41 ✓					SNY	SNY	
42							
43 ✓			1927	SNY	SNY	SNY	
44 ✓			1927	SNY	SNY	SNY	
45 ✓			1927	SNY	SNY	SNY	
46							
66	SNY!?						
67							
68 ✓			1927	SNY only DEL CO.	SNY only Del Co.	SNY only Del Co.	
69 ✓	SNY	1906, 1909, 1905, 1970		SNY	SNY	SNY	
70 ✓	SNY	1881, 1885		SNY	SNY	SNY	
71 ✓	SNY	1853		SNY	SNY	SNY	
72 ✓	SNY	1853, 1885		SNY	SNY	SNY	
73 ✓						SNY	private
74 ✓						SNY	private
79 ✓		1904	1937	most SNY	most SNY	most SNY	
80							
81							
82 ✓	SNY	1853, 1881		SNY	SNY	SNY	
83 ✓ (153.7ac)			1936	SNY	SNY	SNY	
84 ✓	SNY	25 acres in Ulster 1906 1871, 1890 in Del.		SNY	SNY	SNY	
85							
86							
87							
104							
105							
106							
107 ✓ (147ac)	SNY	1877, 81, 85		SNY	SNY	SNY	
108 ✓ (150ac)	SNY	1881, 1885		SNY	SNY	SNY	
109	SNY Del	Ulster Co. 75 ac 1900		SNY	SNY	SNY	
110 ✓	Co. only	Del. Co. 35 ac 1871, 1890		SNY	SNY	SNY	
111 ✓		1906		SNY	SNY	SNY	
112			1927	SNY	SNY	SNY	
113							
114 ✓		W 1/2 1904 80 ac		SNY W 1/2	SNY W 1/2	SNY W 1/2	
124 ✓ (97.8 ac S part)			1935	SNY S 1/2	most SNY	most SNY	
125 ✓ (67.3 ac S 50.1 ac in Del Co in Ulster)			1935	most SNY	most SNY	most SNY	
126							
127							
128							
129 ✓ (187ac)	SNY	1881, 1885		SNY	SNY	SNY	
130 ✓	between	1920 & 1924		SNY 1/2 S	SNY 3/4 S	SNY 3/4 S	
131							