

520-15

(M) The highest point on 3100' crest is at the E end. The descent along the E ridge shoulder quickly leaves spruce-fir behind with only a few scattered fir. SUB-BC dom. VA.

(N) Spruce grove down to SSE on a terrace. Wet spot with interrupted fern. Spruce 12 to 16" dbh with one down 20". The spruce grove ends abruptly with SUB-FB-BC-B below.

(O) 2880' spur at E end of W Stoppel. Down 20' ledge and then a seep descending towards the col with LAP-HYDRO-TZAR. In the col, SUB-BC-FB to 24". Looks like 10'.

(P) Ravine, ^{now dry} about 10' deep heads SW down at of col. Boulderly. 22" SPR. One 12" spruce broken growing at 1.5 mm/y. Estimated age = 100 y.

Thus a 24" spruce could be 200 y!?

(Q) Follow ravine up toward NE where it drains the ponds as an overflow channel. Some standing water left where there had been a flow on Sept 30 - Oct. 1 during tonential rains. HEM & VA common. Spruce to 24" x ± 85'. 22" FB 24", 22" SUBS 23".

NE Pond about 40' wide. SW pond ^{is} larger, connected by a narrow channel. Depth now maybe 2' after heavy rain a week before. No wetland

Looks like a vernal pond.

Vegetation except for an emergent grass in middle of NE pond - possibly a Glyceria. Forest drops down ^{gently} to pond on all sides without any kind of mat or seep veg. Forest is very dense with abun. spruce saplings.

(R) On descent NNW from col, 1st ASH. One spruce. Several 30" FBs. A little below is a suspect bark road? heading down to NW. Narrow & boulderly. Old & too rough for a log road. Could the col have been harked to? 20'? Road ends abruptly.

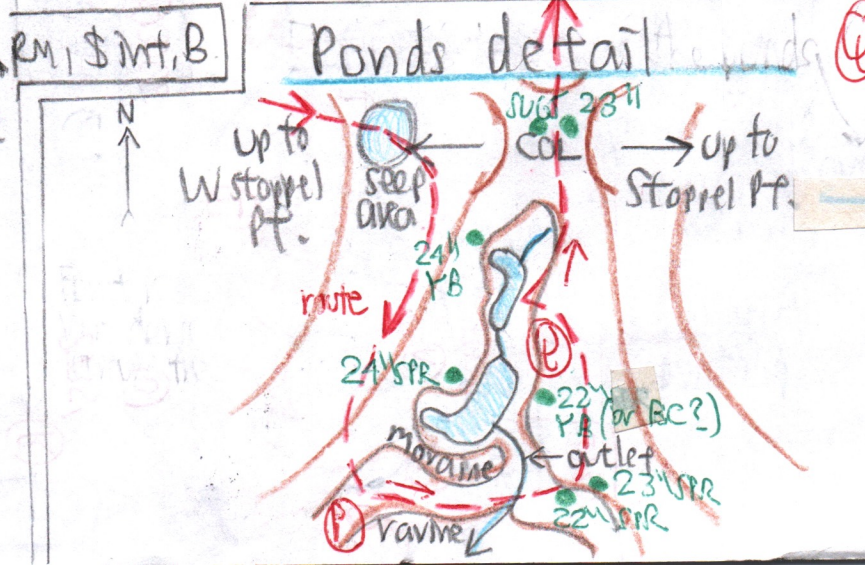
(S) Picket Samb abun. suggest forest tent caterpillar defoliation in SUB stand 20'. More ASH. Stumps. When was SNY acquisition?

Then gently & obliquely down to NNW, crossing many rills & seeps. Scat-Hem.

(T) Young fir scattered & more HEM just above trail.

(U) On trail. SPR with CC beneath-FIR-HEM near outlet to beaver meadow.

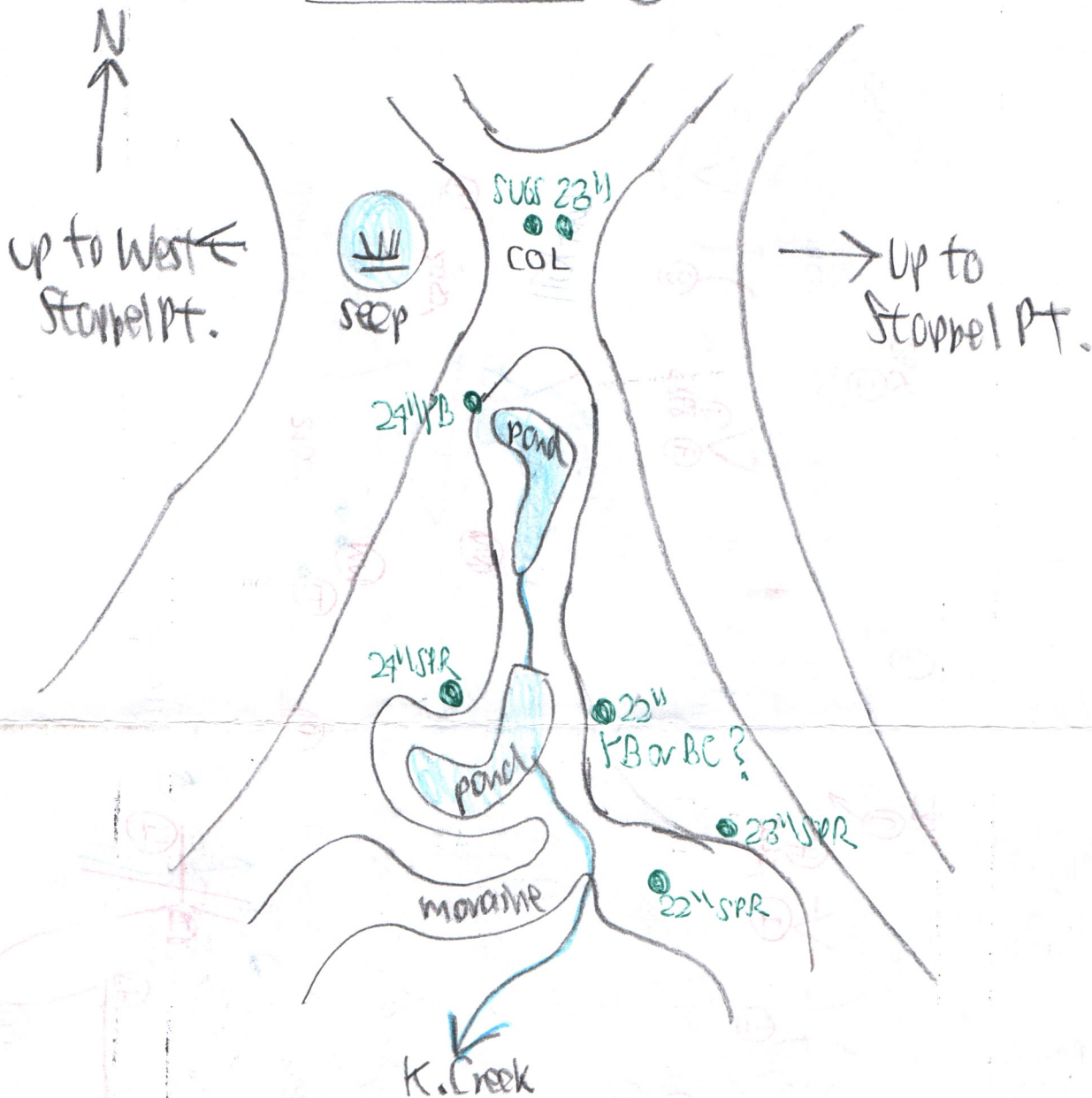
First PB seen all day (?) along trail not far from E parking area, then many of them at N edge of open field.



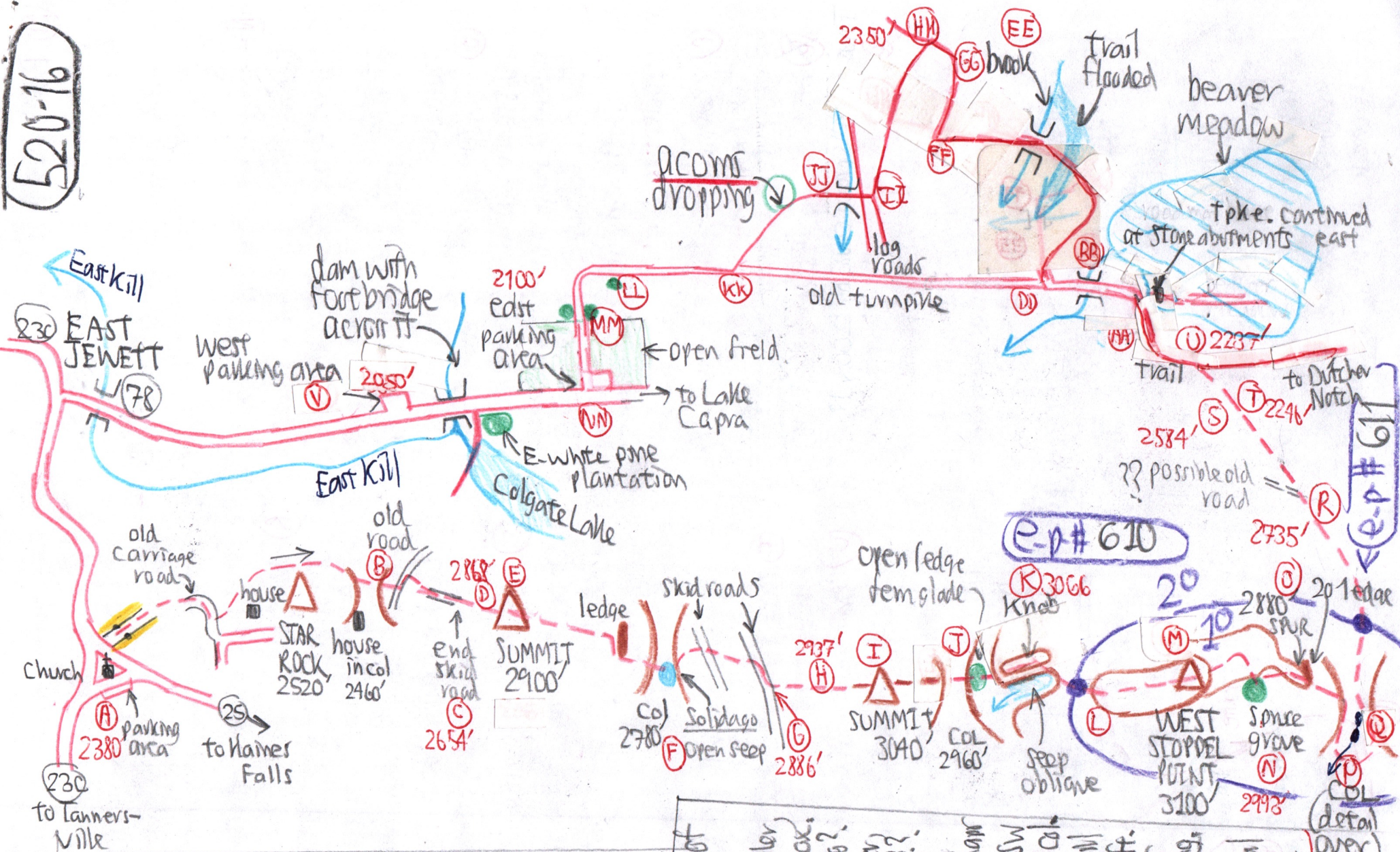
Inset map
from p. 520-15

52045A

Ponds detail (C)



520-16



Time	Point
4:04	(U)
4:10	(A)
4:13	(B)
4:14	(D)
4:34	(E)
4:35	(F)
4:40	(G)
4:44	(H)
4:48	(I)
4:49	(J)
4:56	(K)
5:07	(L)
5:10	(M)
5:20	(N)
5:30	(V)

Estimated size of ponds.
 NE pond is smaller, about 40' wide max, by maybe 100' long?
 SW pond is larger, maybe 200' long?
 Combined, both ponds occupy perhaps 1/3 to 1/2 the NE-SW length of the full Col. Col on Kortenkill Quad - is 700 ft. across, so ponds may be 350' long.
 Also use aerial photos to check