

# Mary's Glen New Trail

with Jack Fencabaugh  
5/11/87 514-1

Site	IP	Map elev.	Δp	Δe	e	Time
Beaver Mead	(A)	29.54	2140	0	2140	2:45
Trail Jc.	(B)	29.31, 29.2420'	.24	240	2380	3:10; 3:55
	(C)	29.26	.28	280	2420	
on trail Kish pt. brook	(D)	29.24	.30	300	2440	
	(E)	29.29	.25	250	2390	
	(F)	29.29	.25	250	2390	
Campsite	(G)	29.42	2260'	.12	120	2260
Beaver M.	(A)	29.54	2140'	.00	0	2140
Falls	(A')	29.50	2200'	.04	40	2180
Epigaea	(B)	29.10		.44	440	2580
	(B')	29.06	2620'	.48	480	2620

$$\text{Rate: } \frac{2620 - 2140'}{29.54 - 29.06} = \frac{480'}{0.48''} = 1.000$$

Soils: till 24" to nil  
around Badman Cave  
Jc. on Escarpment.

Note Spree Creek on USGS  
Quad flowing into the  
South Lake Outlet above  
K. Falls.

## Trees:

ASH (A), 48" w of (B)

SPR (A), (A+B), (B) good remn  
toward Escarpment trails  
2 trees between (B) & (C) with  
more uphill toward N mtn.

MO (A), (B) to (C) (F)

BASS to 30" (A'), (C)

SUB to 30" (A'), (B) to (C) to 24"  
to 36" (D)

OAK (A') to (B), (B) to (C)

B (B) to (C)

## Shrubs

VA (A)  
Klat (B) (A)  
Amel dencke rub (B')

PB replaced by HEM  
between (A) & (B)

HEM (D)

PB (E)

FIR, 2' at (F)

## Herbs

Epigaea (B) !!

Gaultheria (B)

Anemone	Hydro	} (A) to (A')
MC	VC	
Dent	Smilacina	
Panax	Vpap	
TE	Aris	
PA	Mitch	
\$int	Vrot	

(A) to (B): VV, Blvets, UVUL,  
Sphag.

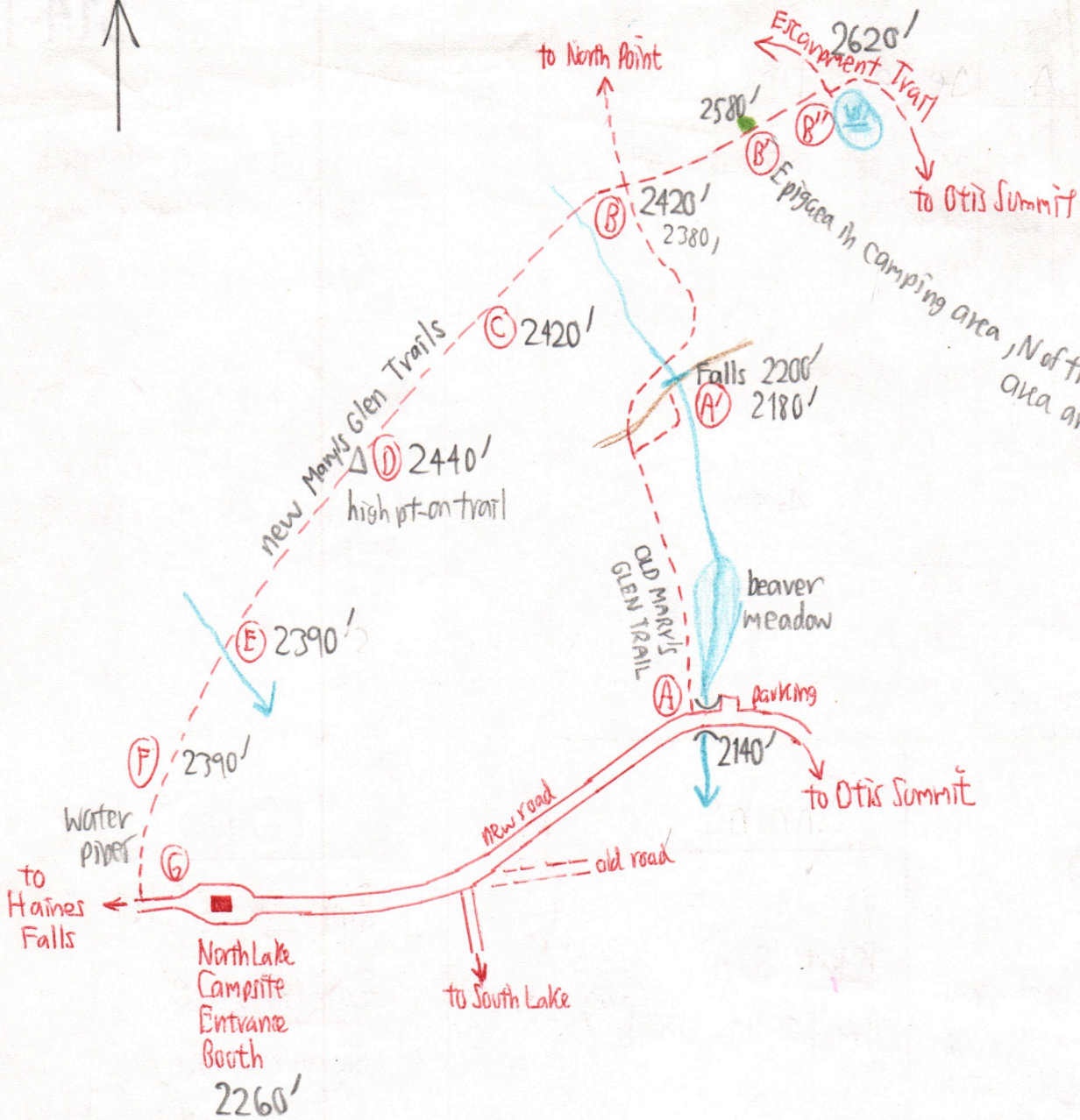
(B) to (C): Vincog, Vrot,  
Adiv,

(C) to (D): \$int, Aris, LL, Fry,  
UVUL, VC, TE, CLAY

(E) = Panax, VV

(F) = OX





Epigaea in camping area, N of trail, small open area among spruce.