

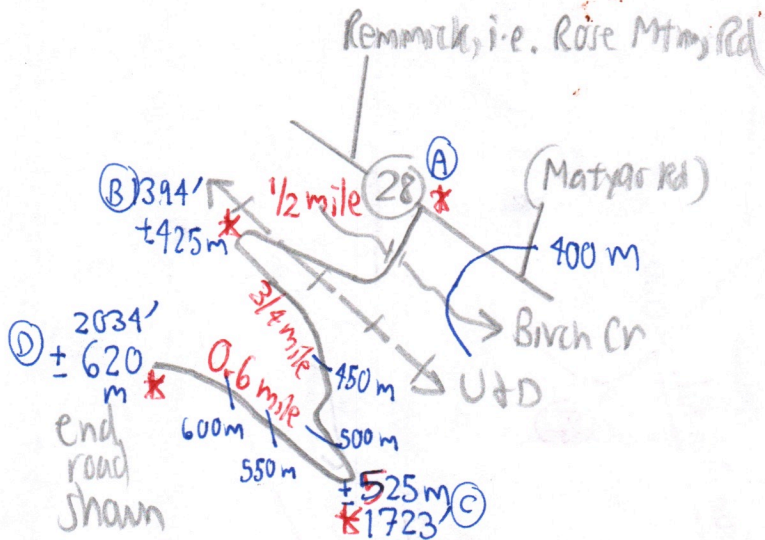
Winding Mtn. Road + Kurt's Drive

from DeLorme's NY State Atlas, 1987, p. 51

202-45

Elevations in meters read off 50m contour map, then converted to feet, in blue.

Distances in red between * * -



Ⓐ ± 400 m	hairpin	1312 ft.
± 425 m		1394 ft.
450 m		1476 ft.
500 m		1641 ft.
Ⓒ ± 525 m	hairpin	1723 ft.
550 m		1805 ft.
600 m		1969 ft.
Ⓓ ± 620 m	end road shown	2034 ft.

Try also aerial photo in Ulster Co. Soils Map.

1 2 3 4 5 6 7 miles

1:150,000 scale