

# Elevations for Delaware Trails (South of Pepacton Reservoir)

442-1  
Black Flies at (A)  
5/7/87

Site	Map Elev.	P	Δp	Δe	e
Beech Hill Rd. Summit	A 2340	29.28	.06	54	2334
Trail Head, Cabot Mt.	B 2280	29.34	.00	0	2280
	C	29.28	.06	54	2334
	D	28.87	.47	421	2701
	E	28.67	.67	600	2880
N Cabot Shoulder	F	28.69	.65	583	2863
	G 2970	28.57	1.07	690	2970
Cabot Mtn. Summit	H	28.58	1.07	982	2962
	I	28.60	1.05	963	2943
	J	28.77	.88	807	2787
	K	28.84	.81	743	2723
	L	28.88	.77	707	2687
	M	28.95	.70	642	2622
	N	2420	29.15	.50	459
Cabot-Touch. Col	O	29.08	.57	523	2503
	P	28.98	.67	614	2594
	Q	28.83	.82	752	2732
Touch-me-not Top	R 2760	28.78	.87	798	2778
	S	28.96	.69	633	2613
	T	29.15	.50	459	2439
	U	29.37	.28	257	2237
	V	29.48	.17	156	2136
	W 1980	29.65	.00	0	1980
Little Pond	X	29.63	.02	18	1998
	Y	29.54	.11	101	2081
	Z	29.46	.19	174	2154
	AA	29.28	.37	339	2319
	AB	29.25	.40	367	2347
	BB	29.22	.43	394	2374
	CC	29.14	.51	468	2448
Cabot-Touch Col	N 2420	29.16	.49	449	2429
	DD	29.10	.55	504	2484
Rivulet drain sprs.	M	28.95	.70	642	2622
	EE	28.86	.79	724	2704
	FF	28.78	.87	798	2778
	H	28.63	1.02	935	2962
Cabot Lookout					
N Cabot Shoulder	E	28.70	.65	593	2873
N Cabot Summit	GG 2910	28.66	.69	630	2910
	HH	28.91	.44	402	2682
	II	29.30	.05	46	2326
Trail Head, Cabot	B 2280	29.35	.00	0	2280
	A 2340	29.29	.36		

$\Delta e = 2970 - 1980 = 990'$   
 $\Delta p = 29.65 - 28.57 = 1.08''$   
 Ratio: 0.917 ft/inch p  
 $\Delta e = 2942 - 2160 = 782'$   
 $\Delta p = 29.65 - 28.78 = .87''$   
 Ratio: 0.889  
 $\Delta e = 2942 - 2160 = 782'$   
 $\Delta p = 29.56 - 28.78 = .78''$   
 Ratio: 0.997  
 $\Delta e = 2910 - 2280 = 630'$   
 $\Delta p = 29.35 - 28.66 = .69''$   
 Ratio: 0.913  
 $\Delta e = 2970 - 2280 = 690'$   
 $\Delta p = 29.34 - 28.57 = 0.77''$   
 Ratio: .896 ft/inch p  
 $\Delta e = 2975 - 2320 = 655'$   
 $\Delta p = 29.32 - 28.61 = 0.71''$   
 Ratio: 0.923

Site	Map Elevation	P	Δp	Δe	e	
Middle Mtn. Trail Head	JJ 2320	29.32	0.00	0	2320	
Springs	KK	29.10	.22	203	2523	
	LL	29.05	.27	249	2564	
Beech Hill Summit	KK 2844	28.73	.59	545	2866	
Col	LL 2680	28.92	.40	369	2689	
	MM	28.88	.44	406	2726	
Lookout	NN	28.70	.62	572	2892	
Middle Mt. Summit	OO 2975	28.61	.71	655	2975	
Holiday Brook Rd. Parking Lot	PP' 2160	29.66	0.00	0	2160	
	end old fields	QQ'	29.56	.10	89	2249
		RR	29.44	.22	196	2356
		SS	29.22	.44	391	2551
	NW Mary Smith	TT 2680	29.07	.59	525	2685
	Mary Smith Summit	UU 2767	28.98	.68	605	2765
	col	VV 2660	29.02	.64	569	2729
		WW	29.08	.58	516	2676
		XX	29.00	.66	587	2747
	trail highest	YY	28.80	.86	765	2925
Hill 2942'	ZZ 2942	28.78	.98	782	2942	
			28.78	.78	778	2942
return	AAA	28.87	.69	688	2848	
	BBB	28.89	.67	668	2828	
	CCC	28.98	.58	578	2680	
	col	WW 2660	29.00	.56	558	2660
	Mary Smith	UU 2767	28.90	.66	658	2767
		DDD	28.98	.58	578	2738
		EEE	29.06	.50	499	2659
	low trail at top ledge	FFF	29.10	.46	459	2619
		GGG	29.16	.40	399	2559
		HHH	29.36	.20	199	2359
	QQ	29.46	.10	99	2259	
Holiday Brook Rd. Parking Lot	PP 2160	29.56	0.00	0	2160	
	ratio	III	29.50	0.06	54	2214
500'/56" = .898	JJJ	29.33	0.23	207	2367	
	KKK	29.14	0.42	377	2537	
Pelner Trail Junc.	LLL 2663	29.00	0.56	503	2663	
			0.51	503	2663	
ratio	MMM	29.12	0.39	385	2545	
	NNN	29.27	0.24	237	2397	
	OOO 2360	29.30	0.21	207	2367	
	PPP	29.40	0.11	108	2268	
Holiday Brook Rd.	PP 2160	29.51	0.00	0	2160	

# Comparison of Summit Floras

5/7/87

West ←

→ east

Summit:	Hill 2663' (LL)	Mary Smith Hill (2767) including NW knob (2680') (LL)	Hill 2942 (ZZ)	Middle Mtn 2975 (OO)	Beech Hill 2844' (KK)	North Cabot 2910' (GG)	Cabot Mtn 2970' (GG)	Touch-me-not Mtn (R) 2760'
Trees:	BC dom to 24" x 40" YB B SUB dead & live MO RM OAK (few) SORB seedl. one down one ledge is 60'	BC dom to 40" x 45" SUG to 27" ASH (down, 20")! YB MO B RM OAK on NW knob SUB many dead on NW knob some 2" live	BC dom., to 33" + 25" to 45' B YB SORB 8" x 25' OAK (few) RM MO SUG, some dead, live 17", 18", 22" dead 24"	BC dom to 16" x 45" RM B YB SUG, many dead, a few saplings still alive.	BC dom., to 18" x 40" RM B YB Several SUG	YB to 40' BC with knot SUG B RM MO One 12" ASH on trail, elev. to 40'	BC dom to 24" x 30" or 35" RM B YB SUG MO SORB	OAK dom. to 45" to 50" ASH RM BC B SUG YB MO SORB sapling at 2732'
Shrubs:	CHK MM VA in fl. RG SAMB	VA MM RG LL & VV in col between the 2 summits	VA RG VV & Cinn 1 ledge down.	VA	VA in fl.	VA RG	VA RG CHK Vacc ang at lockart SAMB	CHK VA
Herbs:	RA ERY CLAY } in fl. OX Psili MC AA UVUL TE Polypodium Smilacina	Ery RA OX, CB Cinn MC \$ mont Polypody	OX MC \$ Inter CLAY ERY TE RS LL Polypody Panax Anemone	OX MC ERY Clay \$ mont	\$ montana emerging Fiddler RA MC OX UVUL	ERY CLAY OX MC Anemone RA \$ montana? Polypody	Polypody LL Ery in fl. CB MC Anemone Mitch TE Clay in fl.	CLAY ERY CB RS \$ TE LL UVUL PREN
Soil Depth:	Auger 14", 11", 15", 16" Rake 18"	Auger 10", 14", 18" cake 8" Auger max on NW knob	Max auger 10", 9", 13" Cake 12", 18" 9" till in VV 15" forest in VV Swamp; 14" to ledge in VV	cake 12" to 18" flat summit	12" cake Red sandy loam when dry resembles Spodosol E horizon 18" mound with no ledge in sight on W shoulder.	12" cake till prob. 12" to 18" deep. ledges face NW to Reservoir	Coarse reddish SS Cakes 18" red till 12" to 18" Cong. boulders	till 12" to 24"

1980 Forest tent caterpillar? 7/29/12. This note

442-2

Boreal

- MC (C) (F) (P) (W) (RR) (SS)
- LL (F) (BBB)
- OX (I) (J) (O) (JJ) (SS) <sup>above</sup>
- CB <sup>under OAK+B</sup> (W) (U) (LL) <sub>at @</sub>
- AA (RR)

Lower slope

- \* CAULO (B) under SUB only (C) (M) (E)
- PA (B) (J) (M) (E) (X) (RR) (MM) <sup>OAK OST</sup>
- IMP (B) (FFF) (RR)
- ADIV (B) (II) (T) (X) (RR) (III) (RR)
- DENT (C) (J) (II) (RR) (III) (NNN) (III)
- ANEMONE (C) (E) (G) (PP) (XX) (PPP)
- TIAR (C) (J) (RR) (PPP) (II)
- DMARG (C)
- V PAPI (C) (S) (W) (III)
- ACTEA (C)
- VC (C) (III) (MMM)
- HYDRO (M) <sup>profuse</sup> (RR) (MMM) (NNN)
- ALLUM (M) (LL) (MM) (WW) (III)
- DIC CAN (M) (P) (RR) (MMM)
- DIC CUC (M) (RR)

\* CAULO under SUB only (P) + under SUB-BC at (GG)

- VPUB (S)
- RUBUS ODOR (S)
- VINCOG (T)
- ARTS (X) (RR) (PPP)
- ATHIELYP (RR)
- MITELLA (RR)
- LAP (RR)
- SCAESA (RR)
- DIC sp (FFF)
- ASARUM (PP)

PA (PPP)

Miscellany

- VV (B) (E) <sup>several sites</sup> (F) (M) (W) (NNN)
- \*\* ERY (B) (E) (P) (RR) (NNN) (XX)
- SMILACINA (C)
- UVUL (C) (W) (X) (RR) (XX) (AAA)
- CLAY (C) (F) (inf-G) (RR) (WW)
- PREN (C)
- RS (D) (RR)
- TE (D) (RR) (TT)
- RA (F)
- SPHAGNUM (F) (XX)
- MITCH (F) (W) (VV)
- \$ (F) (D) (above J)
- POLYPOD (GG) (O)
- V ROT (T) (RR) (PPP)
- UKO OBS (V)
- TU (V) (W)
- GYMNOCARPIUM (W)
- PANAX (X) (UUU) (PP)
- SAXIFRAGA PENN (hufesp) (X)
- PEDICULARIS (BB)
- RANUNC ACIS (DD)
- \$ INTER (MM) (RR) (WW) (LLL)
- CINN (MM) (F)
- \*\* ERY (OOO) in May, DP (II) later on site?
- FRAG (II) on old field under powerline
- HOUSTONIA (W)

CLAY in full fl. in phenom nos. + bees busy at (XX)

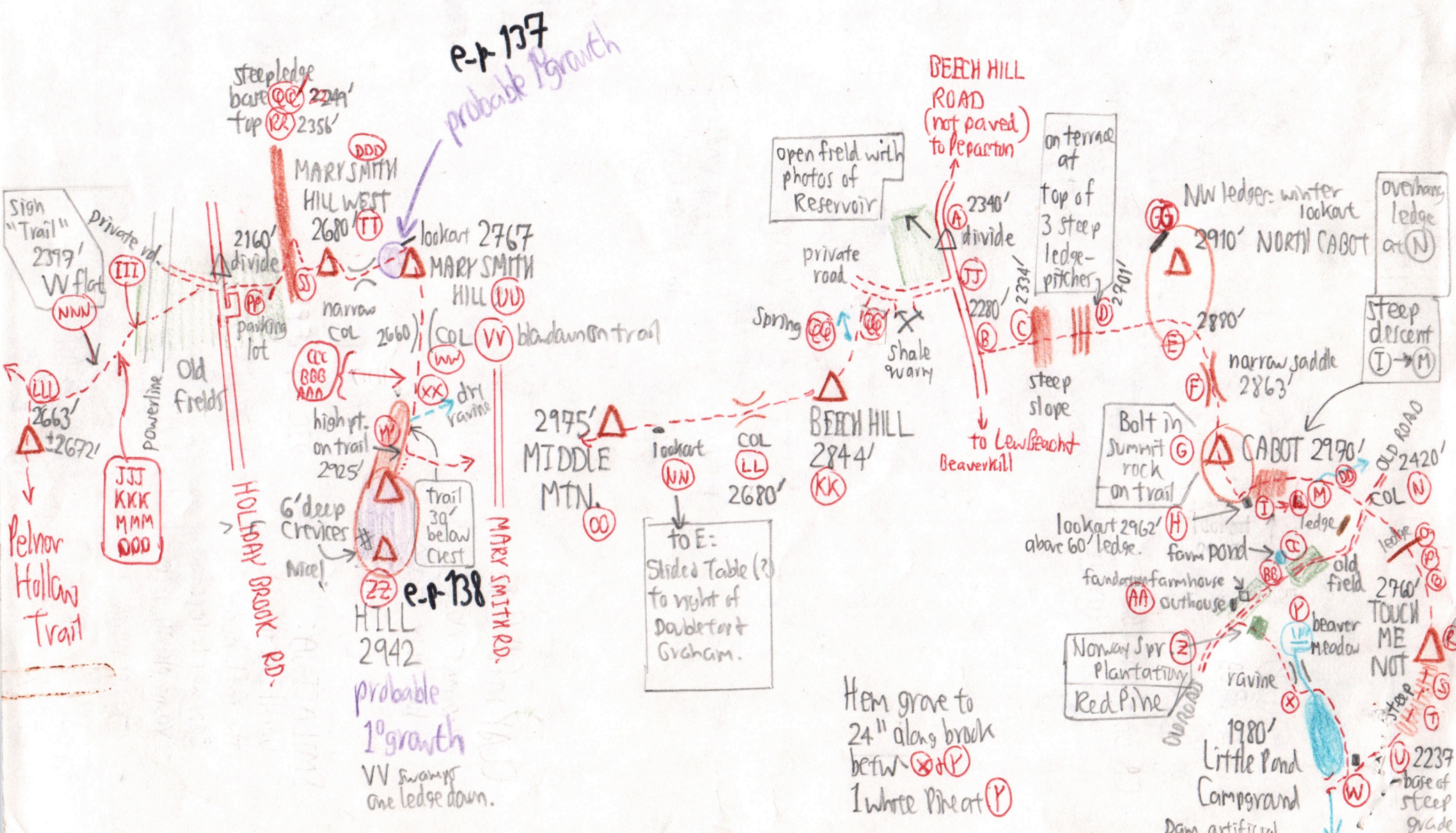
SMILACINA: unroll lvs. to find the infl. bud -- easy way to separate young plants from other genera.

(N) = SUB dom, B, BC.  
(P) = YB, MO, BC, SUB

(S) = BC-B-ASH-OAK  
(W) = YB

Loon heard at (VV) !!

492-4



P-1 137  
probable 1st growth

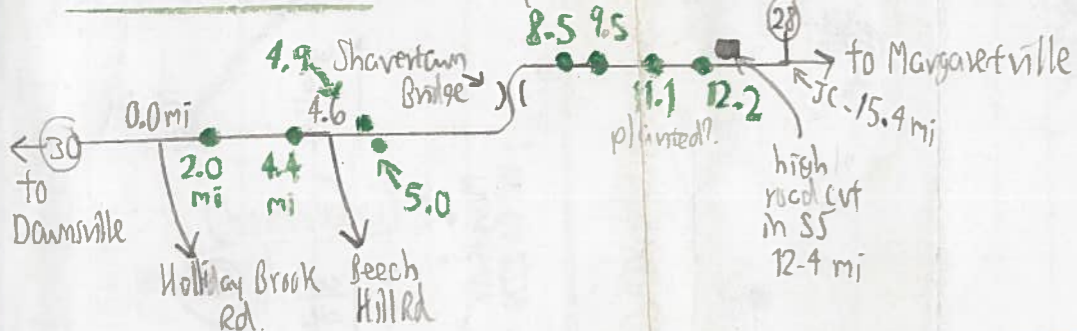
e-p 138  
probable 1st growth  
VV swamps  
one ledge down.

Hem grave to  
24" along brook  
betw (X) + (P)  
1 white Pine at (P)

# Additional Comments

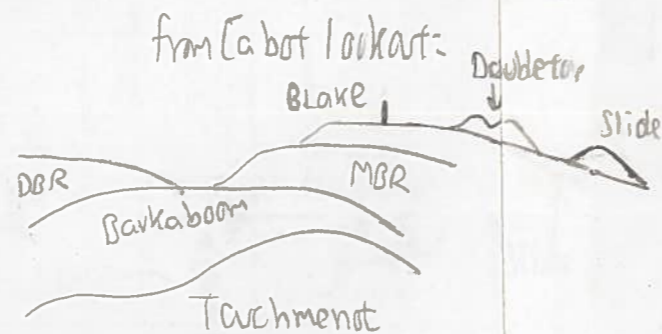
1. Dist'n of *Kalmia latifolia* along Peapack Reservoir.
2. Photo list
3. Sugar maple mortality
4. *Anemone*
5. Soil depth (except on summit)
6. Mileages from Fleischmanns
7. First Growth
8. Timetable
9. Trail mileages

## 1. *Kalmia latifolia* along Peapack Reservoir, 5/9/87



## 2. Photo list 5/7/87 only

- 472, 471 *Anemone* at Little Pond Inlet
- VV wet spots
- 478 1st on NE shoulder of Cabot, below lookout, with CLK
- 481 2nd in col to NCabot from Cabot
- 469 Fog over Peapack Reservoir & its dissipation
- 473 Beaver Meadow Tachmenot Mtn.
- 470 Cabot Mtn. from Little Pond
- 480 Little Pond from Cabot Mtn.
- 475 Stone wall & VV above Little Pond
- 474 Old foundations & field " " " : begin new film roll.
- 476 *Pedicularis* " " "
- 477 *Armillaria* on SUB above Cabot-Tachmenot Notch
- 48 Dead SUBs on Middle Mtn.
- 485 Summit of Middle Mtn. scrubby forest
- 486 Red shale quarry west of Beech Hill Rd.



4. *Anemone* (photo) with 1 drooping flower per stem; sepals white & pink-tipped; lvs 3 in a whorl under the flower; each leaf is palmately compound, petiolate, with 5 leaflets; leaflets crenate-serrate near apex, cuneate entire at base. Non-flowering stalks have 1 leaf.
5. Soil Depth [see other sheet]
- 5A. Trail Mileages from D.E.C. signs:

From (B): 1.8 miles to lookout on Cabot (H)  
3.4 to Little Pond Campsite (W).

From (LL): 1.2 mi. to Holiday Brook Rd.  
4.5 mi to Mary Smith Hill Rd.  
6.5 mi to Beech Hill Rd.  
9.8 mi to Little Pond Campsite  
0.8 mi to Campbell Mtn Trail  
2.3 mi to Pelmar Hollow lean-to  
3.2 mi to end of " " "

From (PP):

3.3 mi to Mary Smith Hill Rd.  
5.3 mi to Beech Hill Rd.  
8.7 mi to Little Pond Campsite

6. Mileages from Fleischmanns  
Beech Hill Rd. divide = 25 miles  
Holiday Brook Rd. divide = 28.6 miles  
(3.0 mi from Peapack Res.)

## 7. First Growth

BC don't but SUB healthy { Probably on NW slope of Mary Smith Hill heading toward col with Mary Smith W Knob, between (VU) & (TT). SUB to 274, BC 30".

Probably Hill 2942 (22). SUBs 17", 18", 22", BC 25", 33" with bark base.

## 8. Timetable 442-5

5/7/87

	AM	PM
Beech Hill Rd.	8:36	2:23
N-Cabot	↓	2:04
Cabot	9:30	1:15
col	10:20	12:45
Tachmenot	10:40	↑
Little Pond	11:18	12:15 old fields 11:47

5/9/87

Holiday Brook Rd.	9:05	1:23
Mary Smith NW	9:36	↑
Mary Smith	10:03	12:47
Hill 2942	11:07	12:05

5/7/87

	AM	PM
Beech Hill Rd.	2:46	4:55
Beech Hill	3:09	4:27
col	3:20	4:20
Lookout	3:37	4:03
Middle Mtn.	3:44	4:00

5/9/87

Holiday Brook Rd.	1:30	3:30
Pelmar Jc.	2:09	2:45

3. Sugar Maple Mortality: Jack Fencabaugh reports Forest Tent Caterpillar cause in 1980 or 1981 (not the same as the tent caterpillar on BC). One area with many healthy SUB at (MM). Trees were healthy & growing rapidly until stricken; not acid precip.

Bark coming off dead trees

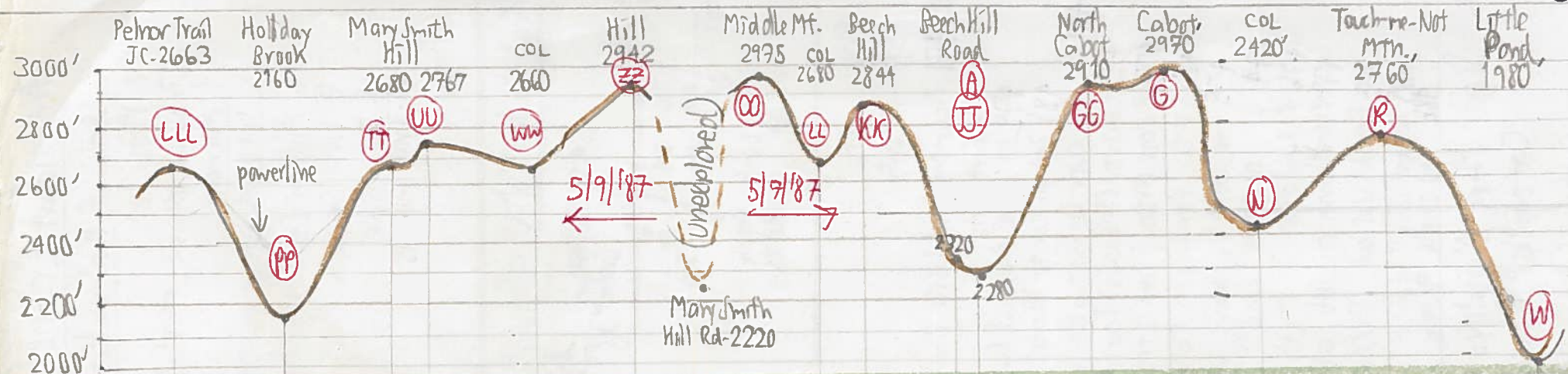
Many old dead SUBs at (22); 3 broken trees of ± 12" show no great growth

slowdown: Forest Tent Caterpillar (AAA) about 8" at (II) dead-husks

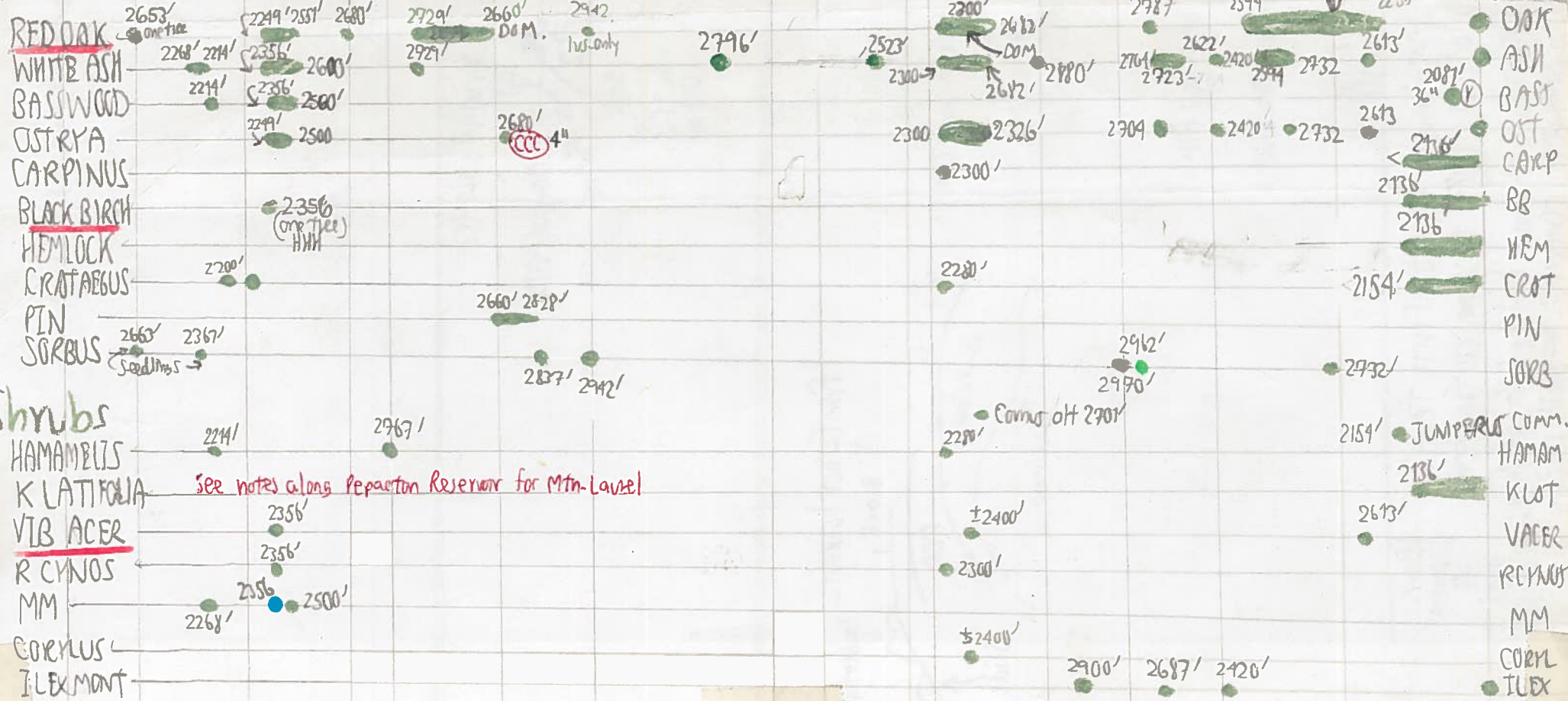
# Delaware Trails: Profile

West ← → east

412-6



## Trees - other than those common throughout



## FOREST HISTORY

Former pastures:  
 (Z) to (CC), (PP) to (III), (PP) to (QQ)  
 First growth (see detail on back): (UU) + (ZZ)  
 For a short distance from (CC) open to (N) forested are woods on a former field.  
 Stumps at (XX), despite 34" sub out of COL (WW). Much PIN, scrubby & much damaged wood. BC dom to 40'. Logged before SWK-acquired? Stumps run to (AAA) + (BBB). SUBs to 24" at (WW)  
 Stumps at (N).

AMELANCHTERS:  
 Copper & slightly pub. lvs. (I) + (V)  
 Copper, pubescent stipules & petioles with a few hairs; common on old fields at (II).  
 Copper & slightly pub lvs, 8" x 25" at (A).

## SOILS

old mands to 18" high atop (LLL)  
 12" to 18" ± till in col between (F) + (G)  
 VV - Sphag wet spots around (F) are prob. dry most summers.  
 12" to 18" ± of till atop (GG) [N. Cabot]  
 12" cake on (GG)  
 24" cake red sandy loam on terrace (P)  
 red shale near surface on bench in field (AA)  
 red shale gravel pit in use at (QQ) [Photo]  
 12" cake atop Beech Hill (KK)  
 18" mand cake at (L)  
 12" to 18" mands + cakes at (OO)  
 [See Chart on Summit Comparison]  
 Cong ledge 10' below summit of (TT) on E;  
 Cong rare in Del-Co.  
 Cakes 15", 11" at (TT) [Ochrept with ochre color at W]  
 24" cake at (WW)  
 14" cake at (XX)  
 11" cake at (XX)  
 Ravine (dry) eroded into 36" of till but no ledge between (XX) + (YY)  
 Cake 15" from down Beech at (XX).  
 12" cake at (CCC)

## SHRUBS + more TREES

RG (F), (NN), (W)  
 SAMB (N), on steep ledges (EE) with YB, SAMB  
 VA (O, P), in full fl (T, F, W)  
 CHC (QQ) + (E), (B)  
 MM (RR)  
 VA in fl. (RR) + (C)  
 SORB clump at (H) 20' x 5".  
 SUB + MO lvs. on saplings 1/2 expanded while buds are swelling in mature trees. (PPP)  
 MO, B;  
 BC at (DDD) [Mary Smith Hill W]. [36" BC at (P)]  
 3 trunks 30" x 45" at base.  
 RM at (RR) (B) (F)  
 SUB with Armillaria  
 1. Photo at (N)  
 2. one 6" at (KK)  
 YB, BC at (C)  
 BC, B, SUB, MO (E)  
 YB at (F)  
 BC dom at (F) + SUB + YB  
 SUB at (RR)  
 TASP at (A) + Norman SPR.  
 ASH + OST on a narrow terrace at (EE) surrounded by MM - YB - SAMB ledges + talus.  
 OAK: 36" at (S)  
 OAKS: lvs. always fall last and hide other spp. lvs. beneath them at (LLL)  
 MO at (F)