

# Rusk

6/11/'70

8/22/'70

370-1

with Ed West

Elevation

Jones bar Rd

2400

12" spruce with a dozen or so saplings in BBM woods. Beech copse alternate with Hay-scented glades. Spruce may be relict on the lower slopes, 2nd generation of any not cut, rather than seeding in from above, according to Ed West (Ed is probably correct (7/21/25) This is debatable). Spruce cut in the Westkill Valley ca-1850-1870, and maybe later again for Sugar YB. Beech springs up after spruce was cut, and if forest here was all spruce there should be no old beech remaining. Spruce scattered at lean to site.

2650

Spruce to 12", some in canopy, some in understory, but only scattered. One red oak seedling and common maple-leaf viburnum.

2720

Yarrow, Ranunculus acris.

2810

A straight clearing running up & down-slope looks like an old road, but isn't. It is a rocky rill after rains and overgrown with raspberry. A 22" YB dying on top, but not dead, has a cleft in its bole on the N side. Ed West thinks it is a fire scar - the tree was burned, but not killed, & the scar surrounded by cambial growth. A sugar just east of it, 31" also with a scar? on the NE. The fire could have been earlier than the 1909 Hunter Men fire, since the Fenwick lumber company did not own Rusk. [Check 1891 fire on MYSARY done]

2960

18" Cherry also shows burn? scar on North E. Sugar maple fire-scarred to 24" and over 150 years old [Ed West]. No spruce here.

3020

BBM still good site, no stunting, trees to 60 ft plus tall. Tree seedlings, Viola, Carex, Aster, Rubus, Ribes, Canada violet, Caulophyllum on ground.

3300

Grade begins to taper. Fragmented boulders off disintegrated ledges. Scattered fir enter to 4" DBH. Hardwoods shorter, more open canopy. More Oxalis, Maianthemum, Rubus, Moosewood,

P-P-6A  
3000'

370-2

Mth Maple, some sugar saplings. Medium size fir large spruce mixed in, but scattered - not dominant.

3460 Steep boulder ledge fragmenting with scrubby hardwood and scattered large spruce.

3550 Enter ridge crest. Turn west. Soon, 12" sugar maples to 30 ft. Open scrubby mth maple, <sup>which is black</sup> cherry, Vib aln, PB, moose, Aralia, AA, Dryopspn. A partial look at atop a ledgelet shows the east (3640) summit dominated by large spruce. Col has a small tract of large spruce.

3680 Summit of Rusk. Canister on NW end of flat summit, on N side of 11" balsam. Unmarked trails converge. Fir - Mth Ash - Cherry - PB and a handful of spruce on the summit - one 10" x 30' with a dead top W of the canister fir. Semi-open with Aralia, Veratrum, Rubus, Dennstardent + D-spinulosa, Maianthemum. A rough eye-estimate (no transect made) might yield 50% spinulosa, 20% AA - Solidrac, 10% Rubus allet + Vib aln for herb-shrub. Ca. 50% of trees are balsam, many dead or dying. Ground layer is mostly Ox, Maianth, Clint, some Aralia. A few seedlings of fir are present, enough to maintain the species.

3530 Col. Spruce grove on wet flat, NE of where the crest was attained. Sphagnum, Carex brunneus. Several dozen large spruce, up to 23" x 60 (80?) ft., with ample reproduction for maintaining the stand.

3500 Col. Hd wds: <sup>black</sup> Cherry, sugar, PB. In open areas, ferns cover Ox, CB, MC, but in shade the ground cover is less covered. A few balsam <sup>to 6"</sup> still hanging on - no reproduction.

3530 (3540 on map) Central knob. Spruce <sup>small</sup> grove <sup>to 60' high</sup> on top with some reproduction, but probably not enough to maintain. Changes quickly back

3703

to hardwood. Balsam scattered to 5" x 20', hardwoods to 30'.

3640

On W side of E Knob, a 29.4" Spruce with its top off, about 40' high. Scattered large spruce, some dead. Dense repro St F in almost equal nos. on very summit of dome-like knob. 10x1" or ca. 15-20 years old. Nearly impenetrable. Unmarked trail that follows the crest passes to south of the knob to avoid the thicket. The 1950 hurricane could have started some of the big spruce going, opening the canopy to the saplings. St F 5-15' high x 1-2" DBH, averaging several feet apart and many thousand to the acre. In addition to large spruce, MBt fir run up to 24" DBH or seed sources. The thicket runs down the SE slope of the knob, the unmarked trail running through less dense portions & climbing back on to the crest.

3355

Large spruce giving way to hardwood.

3330

Large spruce out. Scrub holwds: rth maple, pin cherry, sugar, MB.

3180

Young scrubby holwds to 30': MB, Sugar & Red Maple, Mcgrewed.

PA 63

3100

Maianth - Dennst. Thentalis - AA. Steep downgrade 30 to 40°, with a few easy & disintegrating ledges.

2995

Cross old log road running up to NE in very poor condition. Ed West discerned it. Some young hemlock in the area. 2<sup>nd</sup> hardwoods to 50' high & a few 8" spruce. No trees over 12" DBH.

2800

Enter Hunter Mt. Truck trail. This was an old wagon road from Spruett to Hunter, closed in the 1930's and improved for NMSCD vehicles only. State bought Hunter around 1920 or 1922 [Ed West].

Evergreen: From Risk 3680 summit, glimpses of Evergreen show conifers - not large, probably fir. **NONE 10/72**

8/22/70

3704

Base Rusk, Westkill Road nr. Hunter Brook ELEV- 2083 28.63"

32.6" Hemlock

Hazelnut grove

Summit Rusk, #130, elev-3680'

↑  
1597 ft.  
1.73"

↓

27.95"

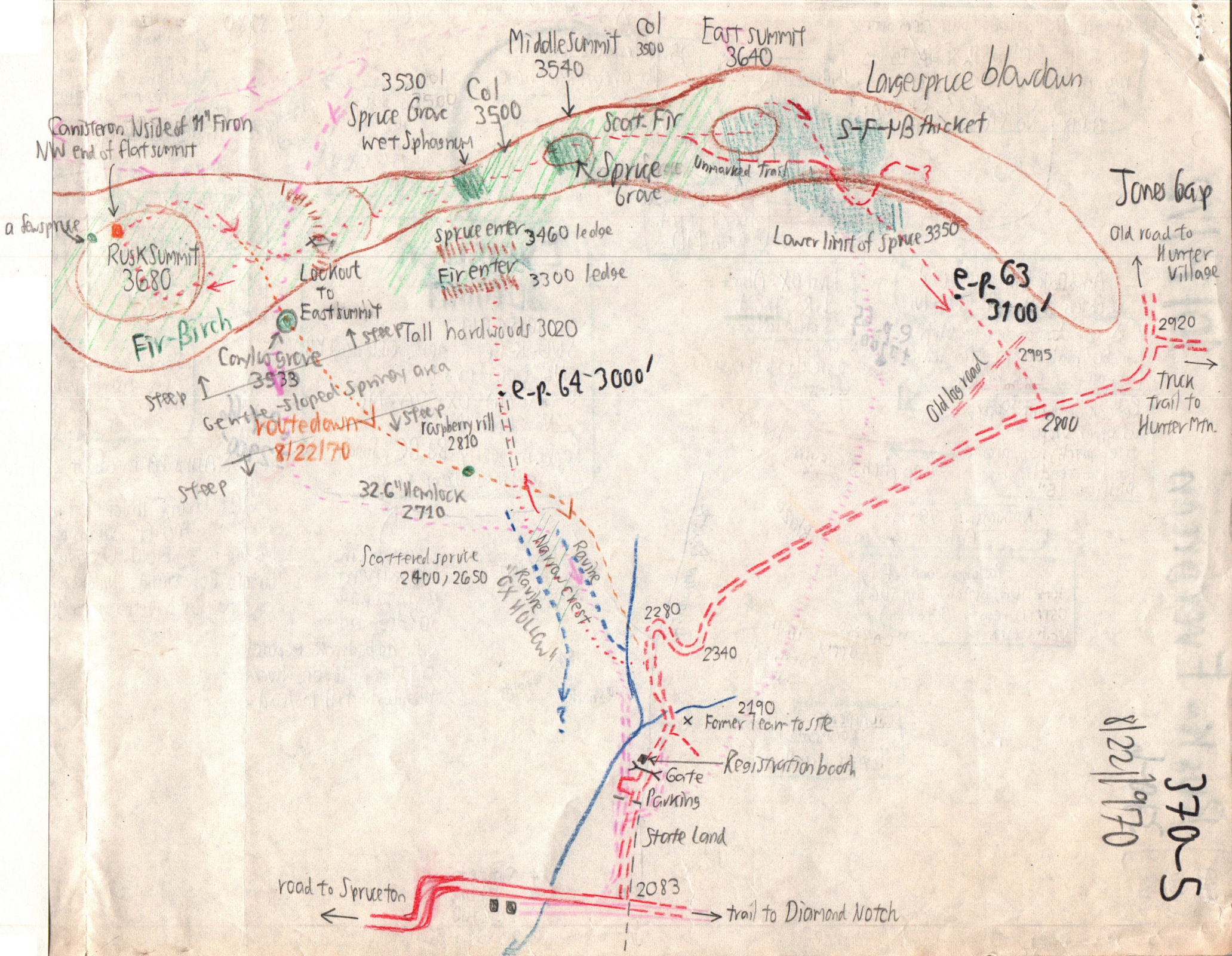
27.06"

26.90"

$$\frac{68}{173} \times 1597 = 627 + 2083 = 2710.$$

$$\frac{157}{173} \times 1597 = 1450 + 2083 = 3533$$

6/29/9  
NONE



Conifer on N side of 11" Fir on NW end of flat summit

Middle Summit Col 3500  
East summit 3640

3530 Col 3500  
Spruce Grove wet Sphagnum

3540  
Scott. Fir  
Spruce Grove

Longer spruce blowdown

S-F-PB Thicket

Unmarked trail

Jones Gap

Old road to Hunter Village

Rusk Summit 3680

Fir-Birch

Lockout to East summit

Spruce enter 3460 ledge

Fir enter 3300 ledge

Lower limit of Spruce 3350

E-p. 63 3100'

steep ↑  
Canyon grave 3533

↑ steep Tall hardwoods 3020

Gentle-sloped spruce area  
routed down ↓  
8/22/1970

E-p. 64 3000'

steep ↓

steep ↓  
Raspberry hill 2810

32.6" Hemlock 2710

Scattered spruce 2400, 2650

Narrow crest  
Ravine  
Ravine  
Ravine  
GX HOLLOW

2280

2340

2190

x Former team route

Gate

Registration booth

Parking

State Land

2083

road to Spruce ton

trail to Diamond Notch

8/22/1970  
370-5