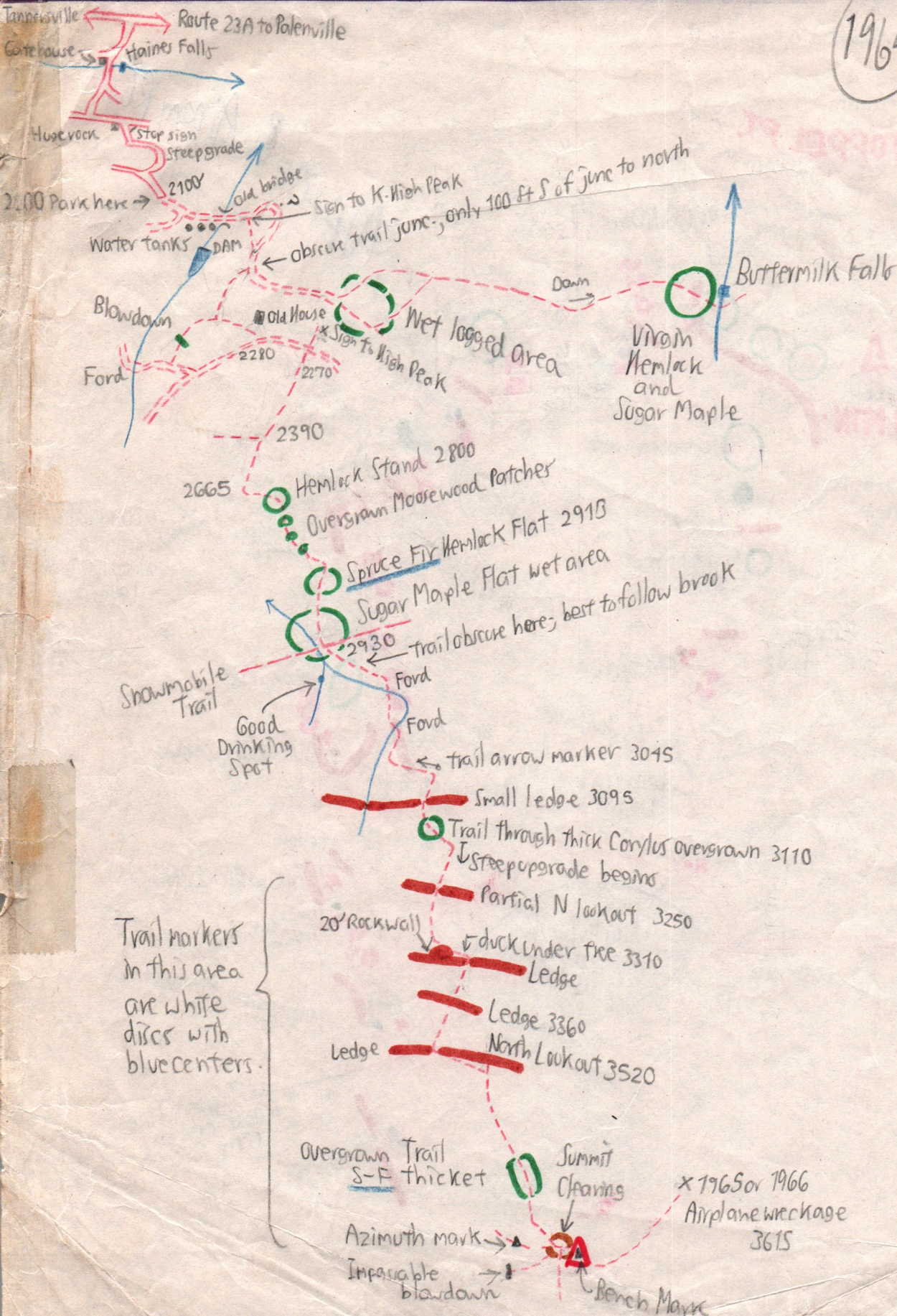


TRAIL PLAN: KAATERSKILL HIGH PEAK 804-1

1969



Trail markers in this area are white discs with blue centers.

KAATERSKILL HIGH PEAK

3655

119

KAATERSKILL HIGH PEAK

504-2

SATURDAY, AUGUST 2, 1969

TOM PATRICK

| Time | Map Elev | Pressure | Temp | Miles | Interp. Elev | Location | Time | Pressure | Interp. Elev. | Temp |
|--------------|----------|----------|------|-----------------|--------------|--|--------------|----------|---------------|------|
| 8:50 | 980 | 29.29 | 67 | 585.85 624.0 | | Home | 5:10 | 29.27 | | 72 |
| 9:38 9:47 | 2100 | 28.02 | 73 | 605.1 0.0 | | Trail Base; Twilight Park | 4:28 4:23 | 27.98 | | 73 |
| 10:23 | | 27.97 | | | | Buttermilk Falls | | | | |
| | | | | | | "E" Old House June "E" | 4:13 | 27.81 | 2282 | |
| | | | | | | Trail Junction "F" | 4:11 | 27.82 | 2272 | |
| 11:50 | | 27.70 | | | | Trail to west "G" | 4:03 | 27.70 | 2390 | |
| | 2540 | | | | | "H" Trail enters hemlock stand, turns E | 3:54 | 27.41 | 2665 | |
| | | | | | | "I" Enter Mossewood thicket; LV; hemlock | 3:48 | 27.27 | 2800 | |
| 12:10 | 2700 | | | | | "K" Enter S-F-Hemlock forest | 3:40 | 27.15 | 2915 | |
| 12:18 | | 27.15 | | | | "L" Open flat Sugar Maple area | | | | |
| 12:22 | | 27.14 | | | | "M" Spring break; cross Showmobile Trail | 3:35 3:26 | 27.12 | 2930 | |
| | | | | | | "P" Trail turns E on level | 3:12 | 27.01 | 3045 | |
| 12:27 | | 27.04 | | | | "Q" Ledge top | 3:09 | 26.96 | 3095 | |
| | | | | | | "R" Trail through thick Corylus | 3:07 | 26.95 | 3110 | |
| 12:36 | 3100 | 27.00 | | | | "S" Trail becomes steep, bends S | | | | |
| 12:42 | | 26.82 | | | | "T" Ledge top; partial N view | 3:00 | 26.80 | 3250 | |
| 12:46 | | 26.74 | | | | "U" Trail goes E along base 20' wall | 2:55 | 26.73 | 3310 | |
| 12:50 | | 26.69 | | | | "V" Ledge Base | 2:52 | 26.68 | 3360 | |
| 12:57 | | 26.55 | | | | "W" Lookout; ledge top | 2:37 | 26.52 | 3520 | |
| | | | | | | "Hurricane Ledge" (Rusk, 1881) | | | | |
| 1:10 | 3655 | 26.38 | | 71 | | K. High Peak Summit | 2:20 | 26.38 | | |

504-3
120

Tannersville

23A

Patenville

Gatehouse

Hainer's Falls

Twilight Park

(Private Community)

Huge rock

stop sign

steep up

Parking

EL-2100

old bridge

Sign to K. High Peak "A"

Water Tanks

DAM

OLD HOUSE

"D"

Blowdown

Ford

Old log road

x Sign to K. High Peak

"E"

"F"

2282'

2272'

"G" 2390'

2665' "H"

"I"

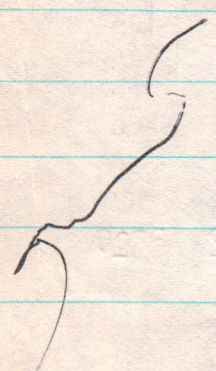
2800'

Wenlock Stomach

on page
continued 121

Obvious trail junction; only about 100' from point "B"

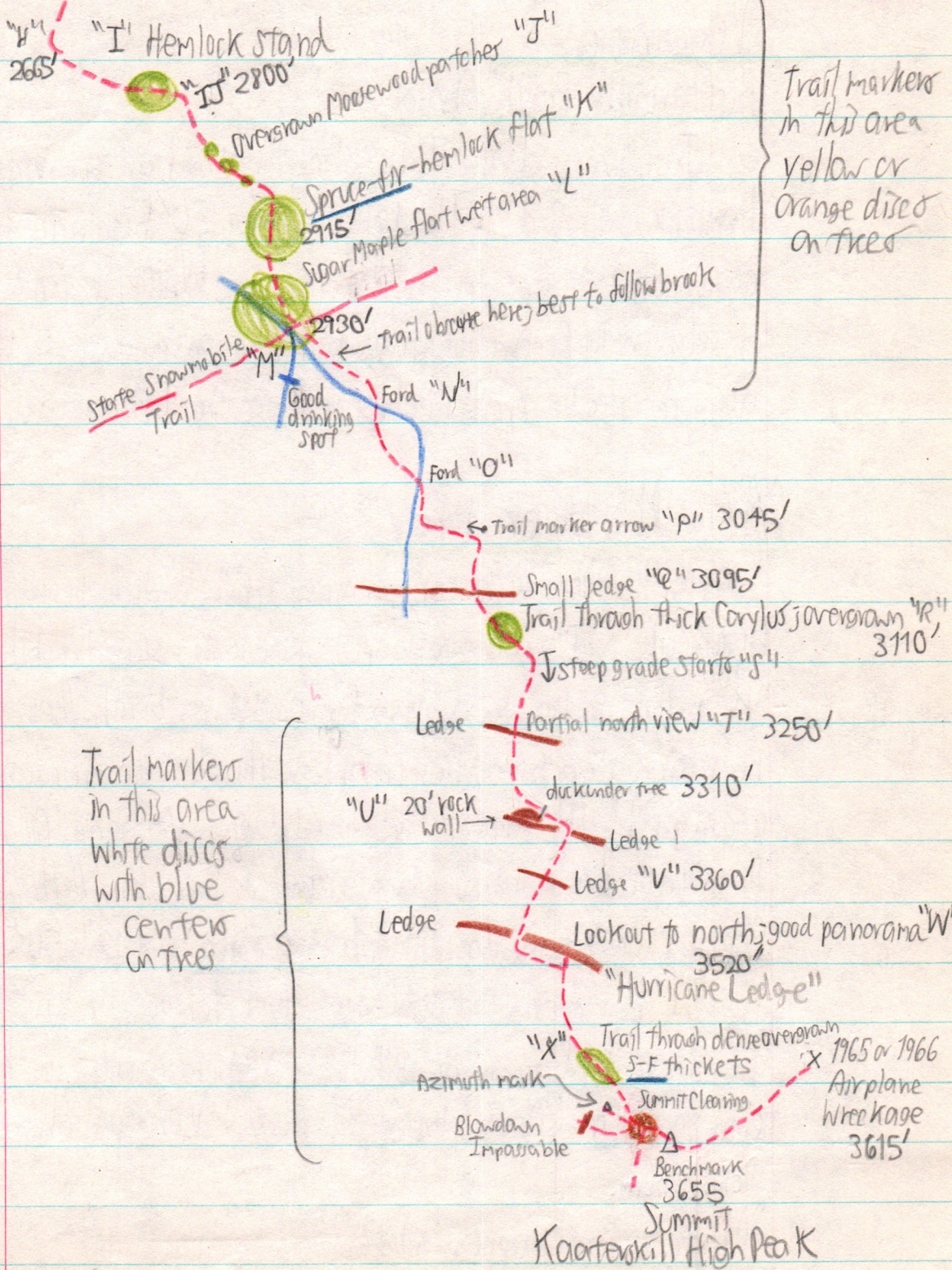
Trail to Buttermilk Falls



121

504-4

Continued 120



122 504-5

Vegetation

Buttermilk Falls Area

Just west of the falls along the trail awesome view(?) 24" x 100' hemlock, with B-B-M. The falls are about 50' high with caravants & steep plunges downstream. White Pine and red oak are occasional. Recent logging is in the area east of "C" along the Falls trail, before reaching the Falls area.

"A" to "M", lower slope

BBM-Hemlock with common young spruce, ^{and fir} Saplings beneath and Moorewood. "I" is a nearly pure hemlock stands while "K" ^{2915'} is this conifer plus spruce + fir, and Paper birch. There is no sugar maple or beech here, although they become abundant again in ^{2920'} "L". The floor of "K" has Sphagnum, Gossypia, Polychia, Dicranum, Brodiaea, Oxalis, young moosewood, Wood fern, Nettle bush, Coptis, Maianthemum, & Thuidium. Largest spruce run 12" x 50'.

The more open flat, somewhat moist terrace "L" ^{2920'} is predominantly Sugar maple, with lots of YBt Moorewood, some hemlock and young fir. Rubus, Glycyca serratata & Veratrum abundant & Polystichum.

"M" to summit, upper slope

At the ledge top "Q", are Rhytidadelphus?, Glycyca serratata & ~~medicaria~~

123

504-6

and *Agrostis*. The trail becomes steep and bends south at "S" (3150'), in a sugar maple-Mtn maple-PB forest with *Circaea*. At "T" (3250') sugar maple and beech have mostly dropped out, while PB-PB-Mtn Maple have taken over. Young fir and spruce re-enter. Mtn. Ash appears. Also are AA, hobblebush, oxalis, *Dryop. phagop.*, *Lonicera can.*, *Cinna*, Trees shorter to 30'.

At "U" 3310', *Trental* & woodfern are common, while by "V", there are PB's to 12" x 40', occasional / young Sd F, Mtn Maple & hobblebush. Woodfern, Oxalis, *Maianthemum*, *Brodiaea*, *Solid-macro*, A-A-, *Carex debilis*, *Pogonatum alpinum*, *Andropogon*, *Uvularia perf.*, *Hypnum imponens*, *Monotropa*, *Lyco lucid.*

In the lookout area "W" (3500'), *Conus*^{can.} appears; *Lyco obscurum* present under a PB-S-F-Mtn Maple-Mtn Ash forest.

Summit of Kaaterskill High Peak

The cap of K. High Peak is S-F up to 8" x 25', not virgin?? but not severely disturbed either. Thickets of young Sd Fare common. NE of the summit, W of the plane wreckage there is some blowdown from a NW wind and some dead standing trees. Associated with the conifers are PB, Pn Cherry & Mtn Ash. Sd Fare are about equal in abundance. Few of the trees are dead on the summit as a whole, but many of the trees approaching

124 504-7

25' tall have dead or dying tops. Perhaps 20 to 25% of
The stems are P.B. The larger spruce occur off the
very summit, perhaps 50' to 100' down the NW slope along
the trail; these run to 12" x 40'.

Vacc. myrt. penn.
Nemophila
Amel. bart.
Sorbus
Prunus penn.
Ribes gland.
Moosewood
Hobblebush

Derchampsia flex.
Cinna
Agrostis
Dianthus comp.
Spiraea latifolia
Wood Fern
Aralia
AA

Clintonia
Cornus
Maianthemum
Ternstroemia
Oxalis (not abundant)
Trillium undul.
Chimaphila
Coptis
Solid. rugosa
Hieracium

Poly. piliferum
Pleuronotum
Bazzania
Tetraphis
Ptilidium
Polypodium
Dicranum
Brachyotum
Polypodium
Plagioglossum

There are areas, as on Merten where the SF are beyond
the thicker stage, but still dense & in competition with many
stems. Most ^{young} spruce-fir drop out as one descends below
"V" (3360'), although there are some large old spruce. The forest
is mainly P.B.-Hobblebush. Sugar Maple re enters at "R" 3110'.

Bryos collected: Scapania nemorosa