

94

DRY BROOK RIDGE 2901

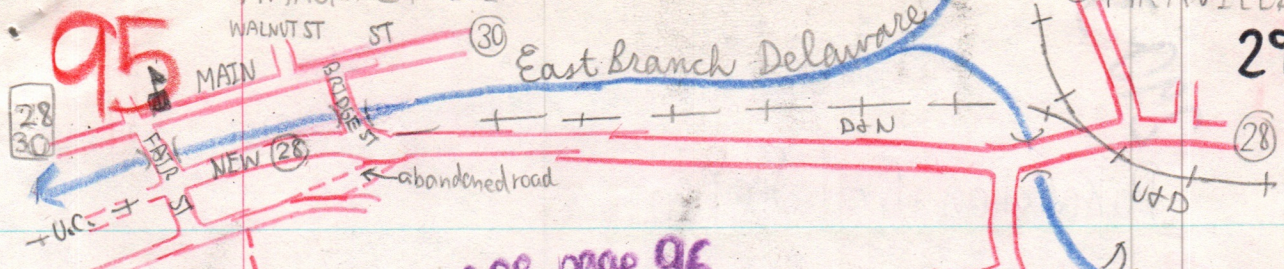
SUNDAY, JULY 27, 1969
with Kathleen Hensch

Time	Map Elev	Pressure	Int. Elev.	Temp	Miles	Location	Time	Pressure	Int. Elev.	Temp	Miles
8:43	980	29.77		70	3.89.5	HOME	6:07	29.12		73	422.5
9:47	1500	28.53			409.6	Trail Base: Dry Brook	5:37	28.46			
	1400				0.0	Trail Base: Margaretville	5:05	28.61		74	9.2
9:57		28.32	1690			"B" Field succession with Apple					
10:08		28.12	1870			"D" First steep pitch base					
10:20		27.94	2030		0.4	"F" German Hollow Lean-to					
10:45		27.50	2435			"J" Rock shelter on SW					
10:55		27.36	2550			"K" Spring - Red marker					
11:15		27.20	2710			"N" Trail top point, end truck trail					
11:20		27.10	2790			"O" Ledge					
11:24	2790	27.09			1.5	Blue-Yellow Trail Junc.	3:47	27.06		68	6.5
11:35	2890	26.96		64		Long ledge on E	3:42	26.92			
						ledge	3:38	26.90			
noon	2960	26.96				Hill bottom	3:24	26.94			
12:20	3140	26.72				Boog	3:15	26.70			
12:30						Cold Brook	3:09				
12:38	3100	26.76				Cold Brook Trail Junc.	3:03	26.75			5.4
1:03		26.79		64	2.6	Lunch stop					
1:15		26.78	3216			Ledge I	2:56	26.67 top			
1:18		26.64	3296			Ledge II	2:55				
1:25		26.56	3395			Top Monkshead Ledge Base	2:53	26.59 base			
1:32		26.55	3407			Den Ledge	2:51	26.57			
						1st Lookout					
1:43	3420	26.54			3.8	Expensive Lookout	2:27	26.54			4.2
						(Pterostemma)					
1:00	3450	26.48		65	ca. 4.0	End hike	2:15	26.48		65	4.0

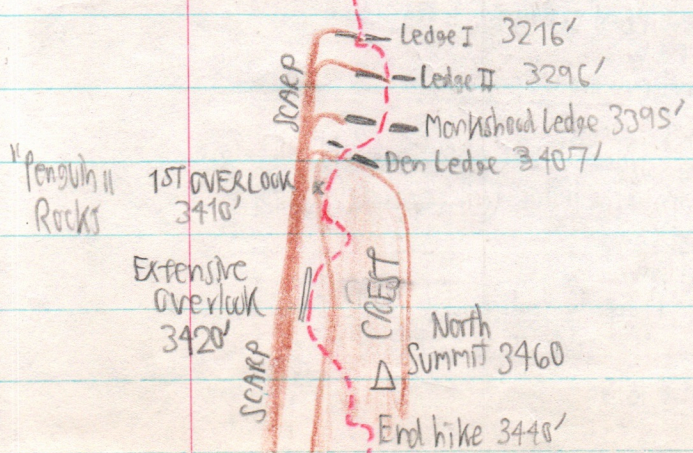
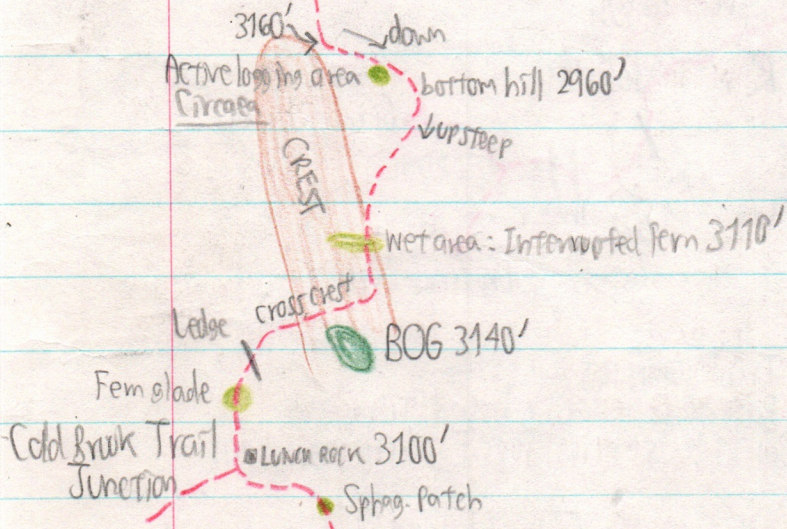
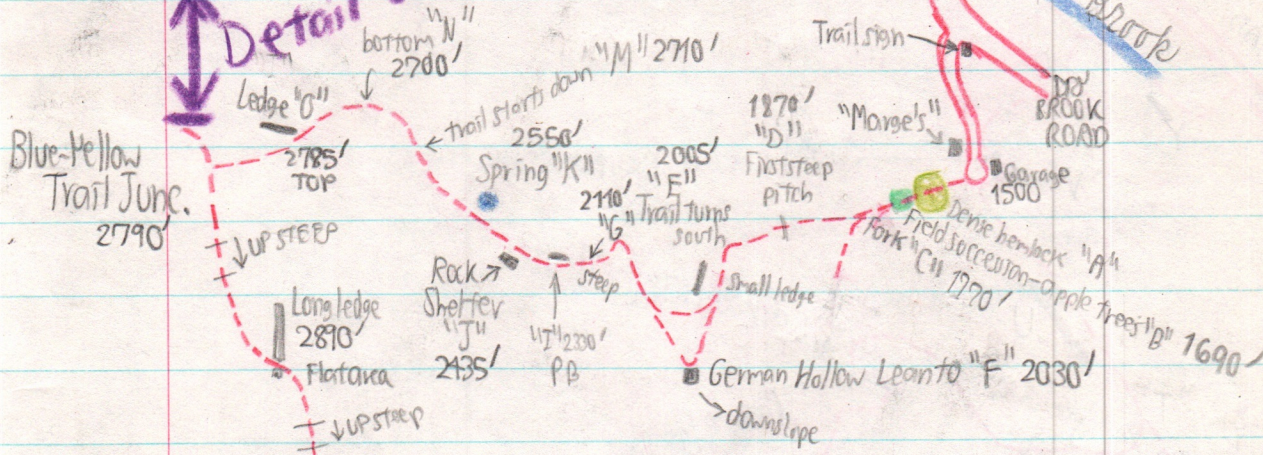
MARGARETVILLE

to (30) ARKVILLE

2902



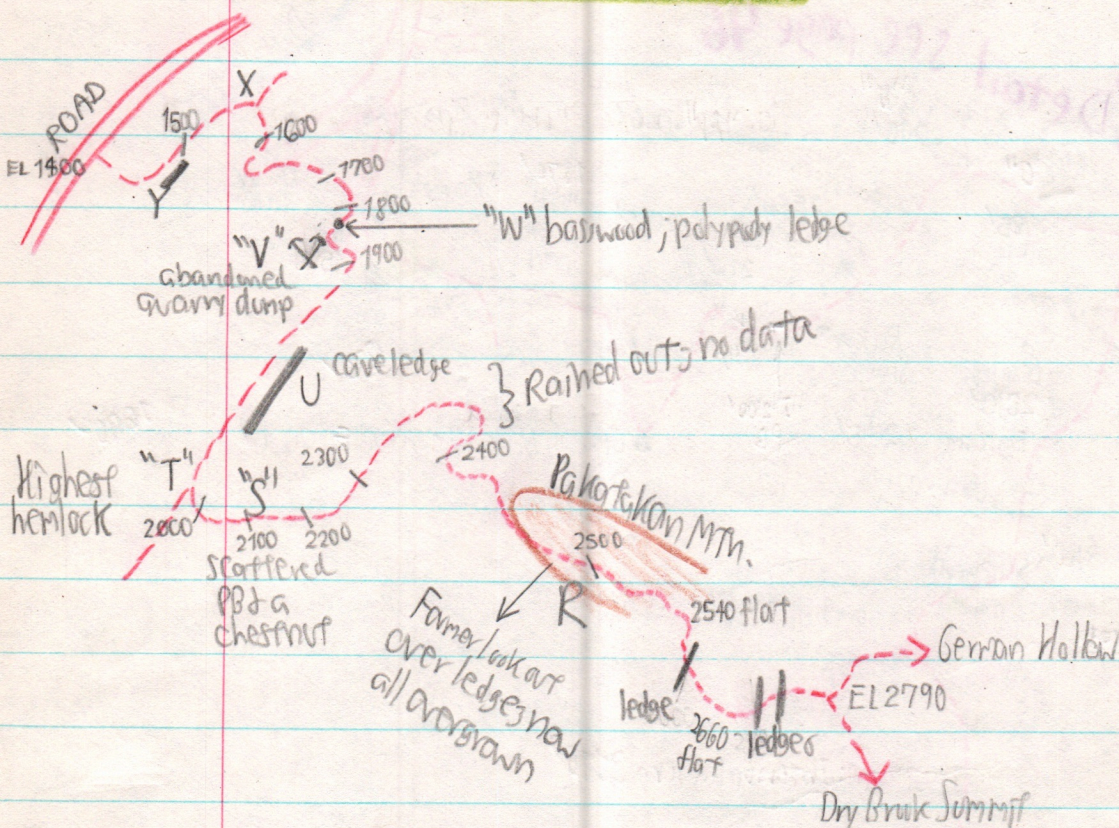
Detail see page 96



96

2903

Pakatakan Trail Section



	3:47		2790	27.06	Trail Junction
	3:52	P	2660	27.20	Base of 2 ledges, broad terrace
	3:55	Q	2540	27.32	Base of ledges; trail jogs E; little ground veg.
Rain	4:10	R	ca. 2500		Follow long level above ledge on W; flat spur on E.
	4:27	S		27.75	Scattered PB & a Big tooth aspen
	4:29				Castanella on W
	4:30				Pedicularis on trail
	4:32				Hemlock (highest?)
	4:33	T	1960	27.88	Trail runs in drain SW; old phone box? N of trail
	4:38	U	1950	27.98	Large overhanging ledge with rocks 50' up to S.
	4:46	V	1900	28.05	Bluestone Dump
	4:47				Hemlock Grove
	4:53	W	1840 ca.	28.29	Basswood; Polypody ledge on W
	4:57	X	1550	28.36	Trail makes 180° turn; trail to NE
	5:03	Y	1500	28.53	Large ledge to S
	5:05		1400	28.61	Base

97

VEGETATION

290-4

German Hollow Yellow Trail

*except
occasional
Brodiaea
& Polychloa

Above trail base, old log road enters dense hemlock without any undergrowth*. Above that is a B-B-M forest with a hemlock understory, but the hemlock dropping out soon. At 1690' is a small clearing with apple trees, shown as a homestead on the old 15' quadrangle (Margaretville, 1904); here are *Solidago* ^{? *can.*} and *Hypericum perforatum*.

Black Cherry and Ash

Red oak are common all the way up, but one black birch was seen at

"D" 1870'. An *Ostrya* occurs at "M" 2710'. Logging is in evidence all the way up, but the canopy is still closed and the trees large. A large diversity of ground plants occurs under the forest near-climax:

LICOPodium COMP., OBSC., LUCID., ANNOT.

DANTHONIA F. CAREX BRUNN., FESTUCA OBTUSA, MILIUM EFFUSUM, BRACHYELYTRUM

DEMSTEDTIA, WOODFERN, POLYSTICHUM, POLYPODIUM, BOTRICHUM VA (2630'),
NY FERN, DRUP MARGINALIS,

MONOTROPA*, VIOLA, MOOSEWOOD, UVULARIA SESP., TRIENTALIS, ASTER ACUM.; BLACKBERRY,

MALANTHEMUM, VERONICA OFFIC., ARIZONA, EUPAT. RUGOSUM, CAULOPHYLLUM,

OXALIS, RANUNC. ABORT., TIARELLA, ACTEA RUBRA, IMPATIENS, ALLIUM TRIC,
GALIUM, ASTER DIV., GEOM

MINIUM AFFINE CITIARE, THUIDIUM DEL, BRODIAEA, DIORHEUM FULVUM

HEDWIGIA ON ROCK ON SW ABOVE SPRING & AT 2630', TULSW. ^{LEUCOM.}
PLACOTHECIUM DENICULATUM.

The forest is easily passable throughout and clear of underbrush.

* One *Monotropa* with erect flower at anthesis, elev. 2005 at "E" on N.

Some Paper Birch at 2330' with obscure ledge on NE here only.

98

2905

Ledges along this trail are obscure and fragmentary, often just a steep pitch. The trail often passes up through a discontinuity in the ledge.

At the ledge "O" 2785' (top) are Hedwigia, Thuidium, Plagio-dent, Oxalis, Woodfern, Brotharella & Dicranum fulvum.

Blue Trail

At the long ledge, el. 2890', there is: Minium, Dicranum, Thuidium, and Plagio-dent. Red oak is common in the B-B-M. Milium, Cinna, Black Cherry, Raspberry, Moosewood, Oxalis, Viola, and Carex brunneus are conspicuous. Trail follows parallel & east of a yellow blaze on trees. Brotharella & H. impenens together on a log at about 3160', just N of the current logging area.

Ribes triste(?) collected at this point. Sugar maple is being logged and Dennstaedtia fills in under canopy openings. Milium has blue-green leaves.

At the wet spot 3110' is Osmunda claytoniana, and Carex ^{foliis} rupulifera. To the west, the fern glade is extensive (possibly a former bog? #307)

Cold Brook Trail Junction: B-B-M, Moosewood, blackberry, woodfern, Oxalis, Cinna, Brothella, AA, NW Fern, Holc. lebrith.

* ~~partly~~
state land border
on west?
lots 74 & 39

99

later numbered
#307

2906

Dry Brook Ridge Bog Elev. 3140

To German Hollow Junction

NORTH
↑
W ← E
S ↓

Coptis trifida

TRAIL

Vaccinium penn.

Red Maple - Yellow Birch

To Cold Spring
Hollow Junction

Red Maple
Yellow Birch

Osmunda cinnamomea

with Rubus hirsutus below -

in Sphagnum fallidatum

Carex ~~flaccida~~ in Sphagnum

Red Maple

Carex intortilis

in Sphagnum

Viburnum cassinoides

Nemophylax mucronata

Hamamelis virginiana

Juncus brevifolius
and some nearby open
water

Red Maple

Glyceria canadensis in Sphagnum

[This is part
of C. intortilis
interior zone]

Triadenum virginicum var. fraveri in Carex brunnescens zone,

scattered, but mostly in the SW portion of the bog. With

Polytrichum ohioense and Lysimachia terrestris.

estimate of area, done 9/22/02:

138' x 82'

11316 sq ft

43560 / acre

0.26 acre

length { 100 ft = 65 mm on this sketch.
? ft = 90 mm on this sketch } ? = 138 ft.

$$\frac{100}{65} = \frac{?}{90}$$

width { 60 ft = 55 mm
? ft = 75 mm } on this sketch ? = 82 ft.

$$\frac{60}{55} = \frac{?}{75}$$

100

290-7

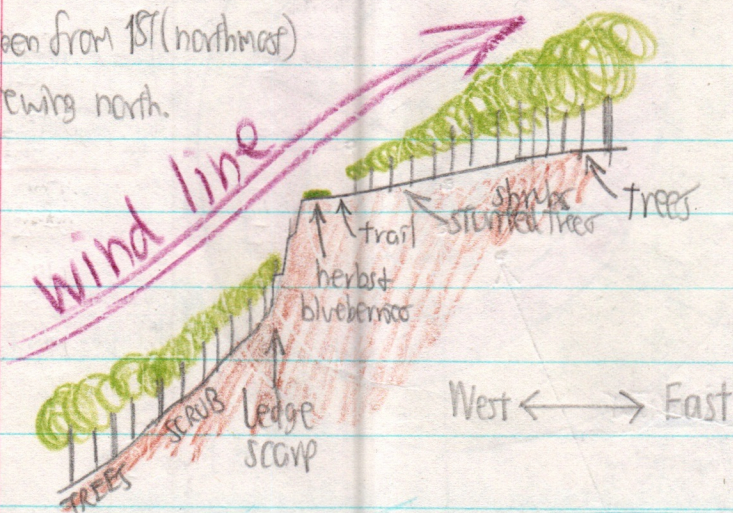
Lookout Area to Cold Spring Hollow (Huckleberry Brook) and Pepacton Reservoir.

Monkshood (*Aconitum noveboracense*) growing on ledge at about 3395, near base, W of trail. Also on rock is

?? Rhytidadelphus squarrosus ?? Above the ledge, the forest gets shorter and the 1st Mfn Ash appears. Vib aln, Mfn Maple, Beech, Vib. car., woodfern, Red Maple.

PROFILE OF LOOKOUT, VIEWING NORTHBOUND:

This is best seen from 1st (northmost) overlook, viewing north.



The exposed rock ledge tops has a diverse and unusual flora:

Polytrichum juniperinum

Polytrichum piliferum

Cornus canadensis

!!!! → Potentilla tridentata

Polypodium vulgare

Deschampsia flexuosa

Maianthemum canadense

Solidago macrophylla

Polytrichum ohioense

1st (N) Lookout only ??

Clintonia borealis

Coptis tripartita?

Clematis virginiana

Aconitum noveborac.

Poa compressa

Agrastis hernalis?

Bromus

Ribes rotundifolium

Vacc. myrt. and
pen. ang.

Aster acm. Uvularia sess. Carex deb.

101
290-8

Shrub are Prunus virginiana, Viburnum cassinoides, Prunus penns,
Corylus cornuta, and scrubby red oak, beech, black cherry, PB,
and red maple.

Summit area end of hike

Black Cherry, PB, Red Maple, Moosewood, Mtn. Maple to 12" x
30 to 40'. Wood fern, Poly. ohio, Aster acun, Polygonum cilinode;
Pohlia nutans, Dicranum flagellare with flag. on stump; Raspberry,
Maianthemum, Mithum, Carex intumescens, Cirina especially profuse.

The summit of Dry Brook Ridge is all hardwood; with not a
single fir observed. Spruce-fir ground plants such as
Cornus, Coptis, Clintonia were found, but in scattered
localities and not as ^{common} ground cover. Could this summit have
had fir at one time? The conditions warrant a few
scattered fir. ~~→ and removed for Christmas trees? NO!~~

No leafy liverworts observed entire hike!!