

# Cross cultural collaborations to protect brown ash: Reflections from Wabanakik



Ella McDonald  
Master's Student, UMaine Orono



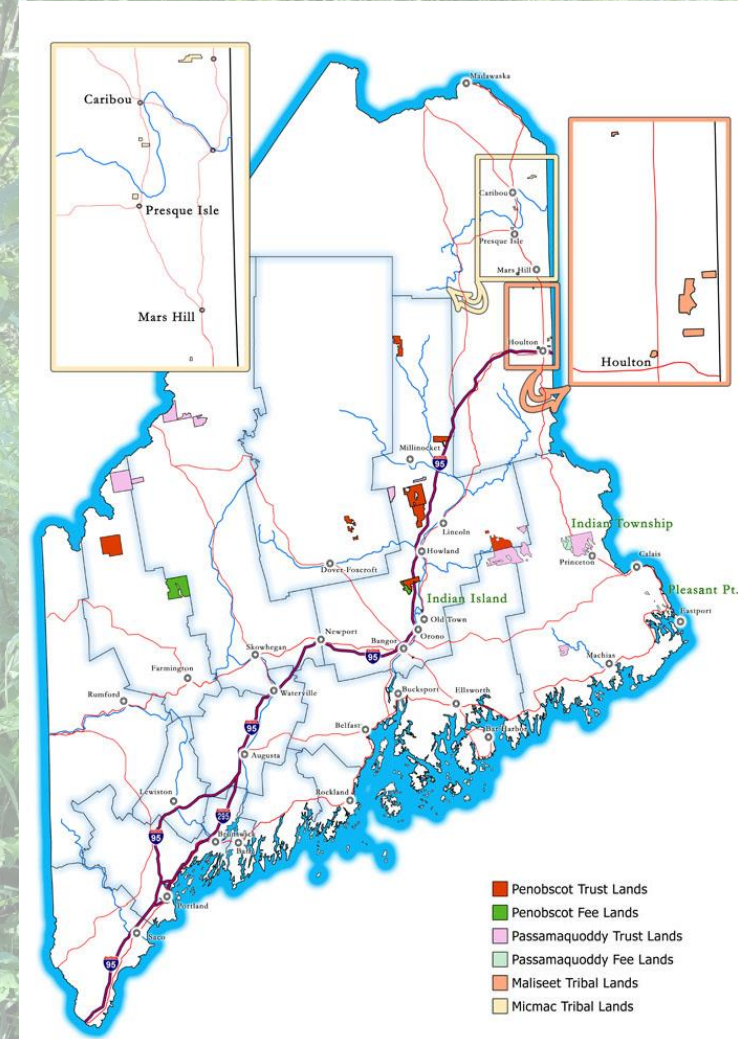
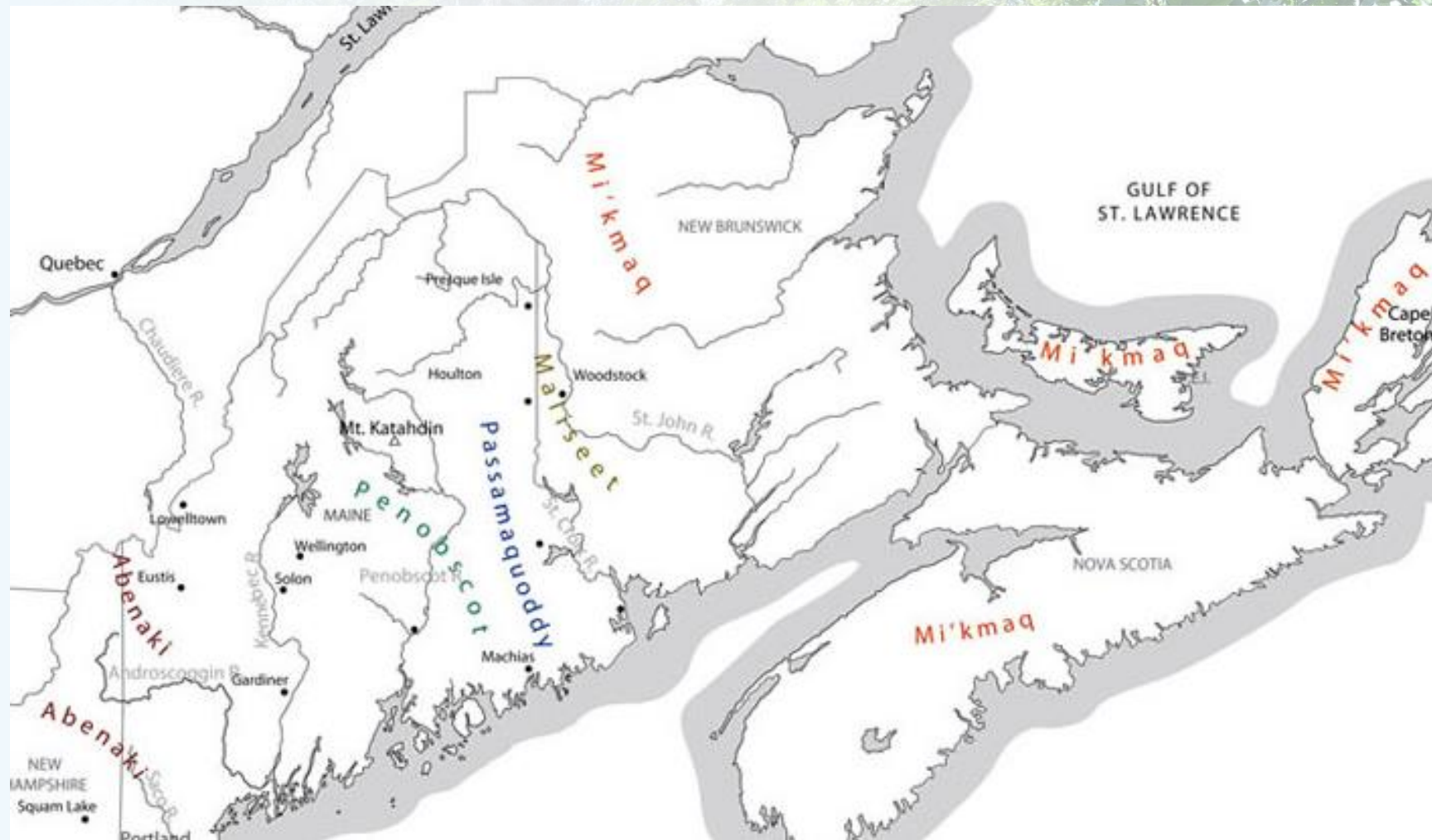


Building cross-cultural collaborative relationships for land access and land care



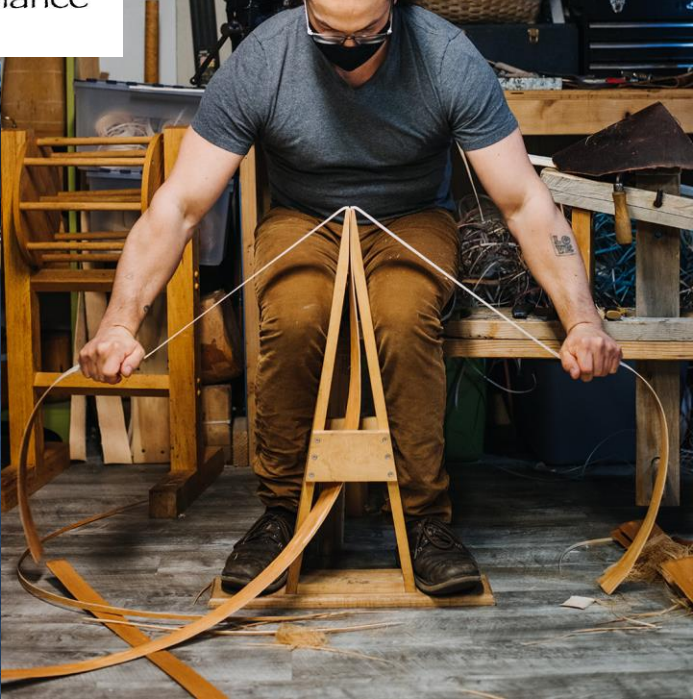
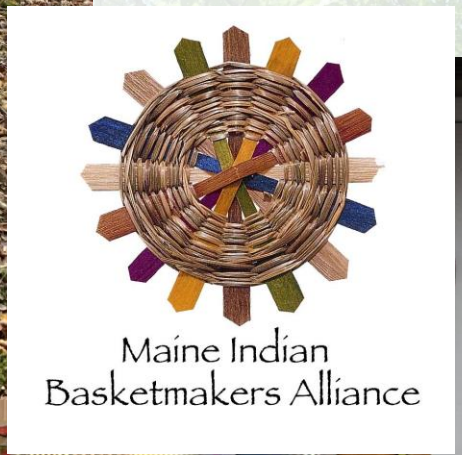
# Wabanakik

# Current Tribal Nation Land Holdings in Maine



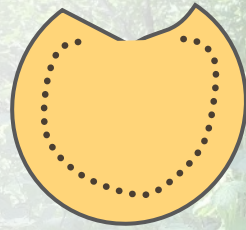


# Protecting brown ash is a Wabanaki priority



# Brown Ash

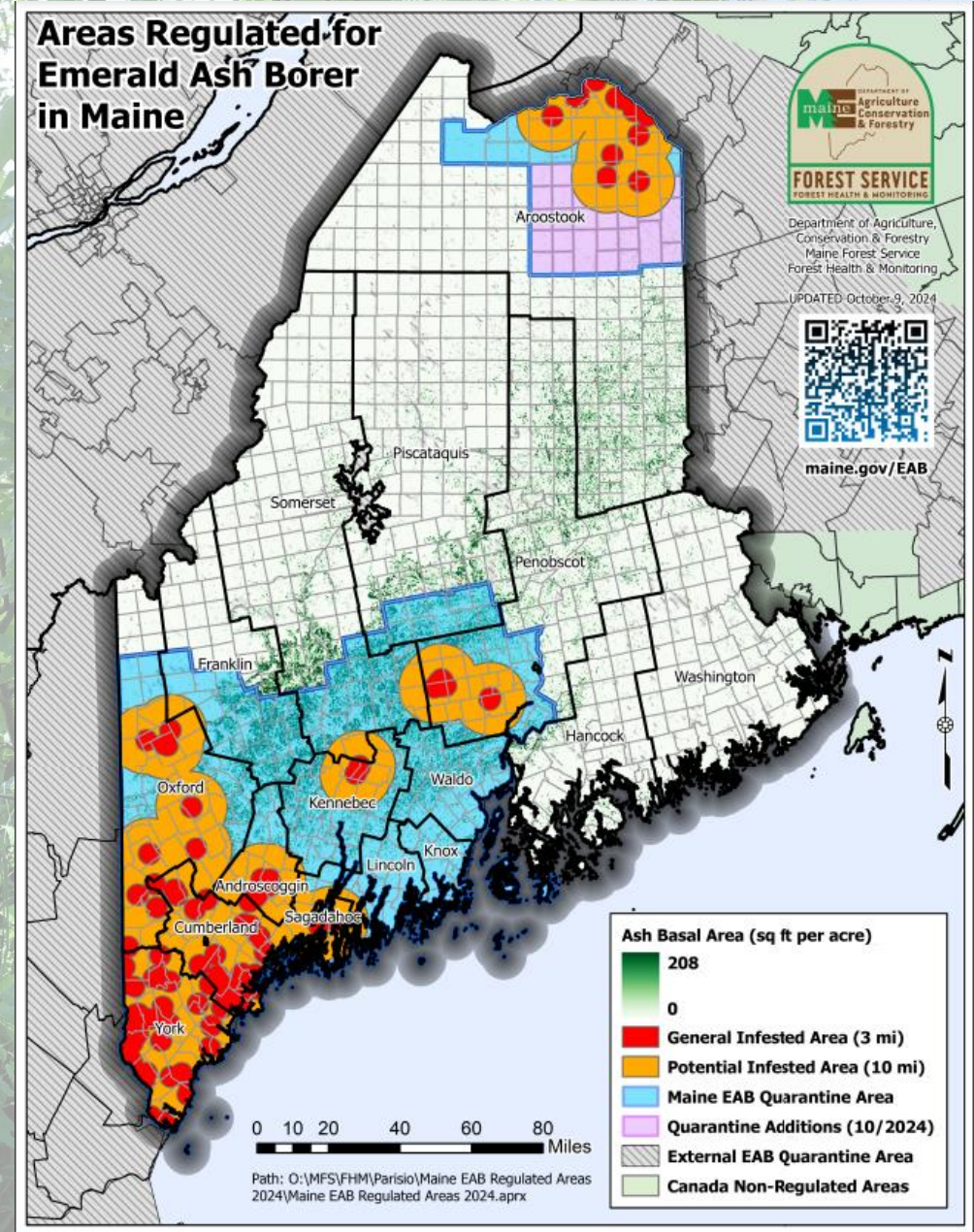
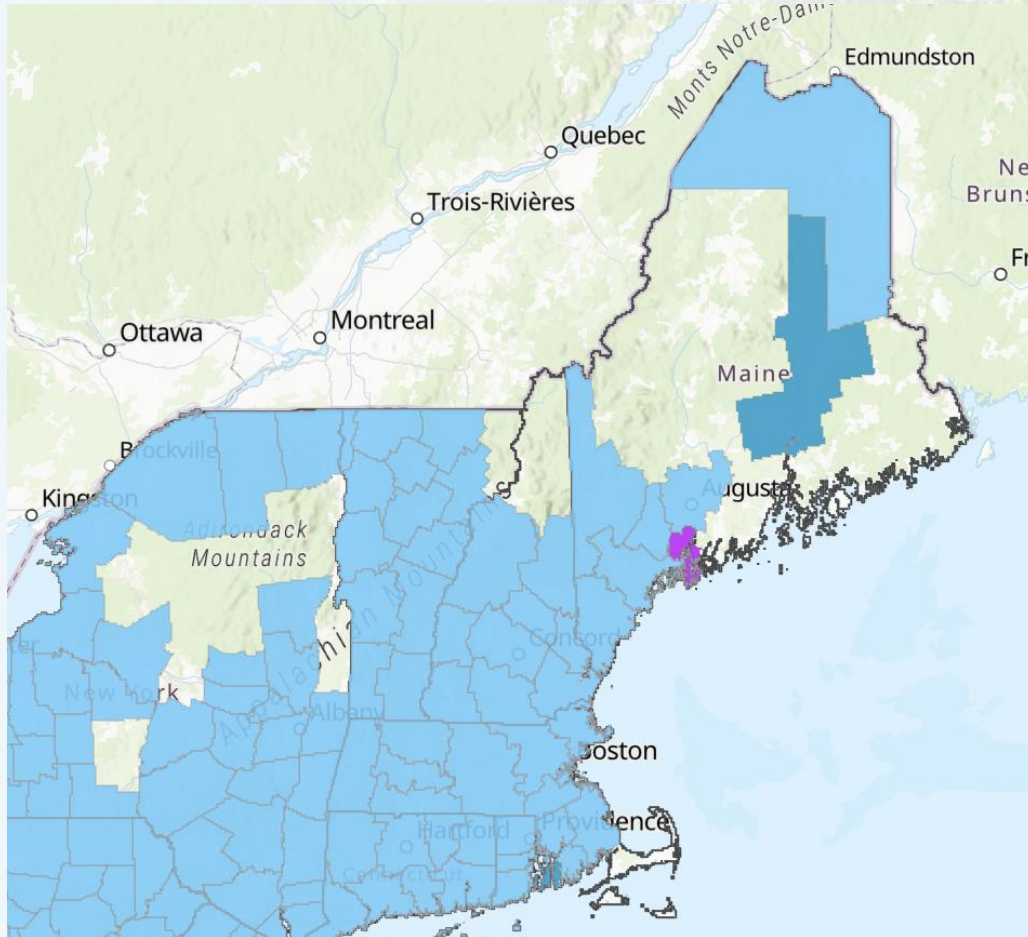
A.k.a.  
black ash,  
*Fraxinus*  
*nigra*



**Brown ash**



# EAB Spread



# Ash Protection Collaboration Across Wabanakik

Named in 2023, APCAW is a group of Indigenous and non-Indigenous researchers and forest caretakers working together to organize actions to protect ash, based out of the University of Maine.



# Research and outreach process: How we center Wabanaki knowledge and recommendations

- Wabanaki people shape our direction as P.I.s, graduate researchers, and partner organizations
- Regular brown ash task force meetings to provide updates and ask for direction from basket makers and Tribal Natural resource department staff
- Tools such as programs and website collaboratively developed
- Listen to and collaborate with Tribal Nations through grants and community meetings





# APCAW Program

- In 2023: Held 6 virtual events, 2 general in person trainings, 1 Tribal in person training
- 914 people registered total
- In 2024: 300 people attended Future of Brown Ash



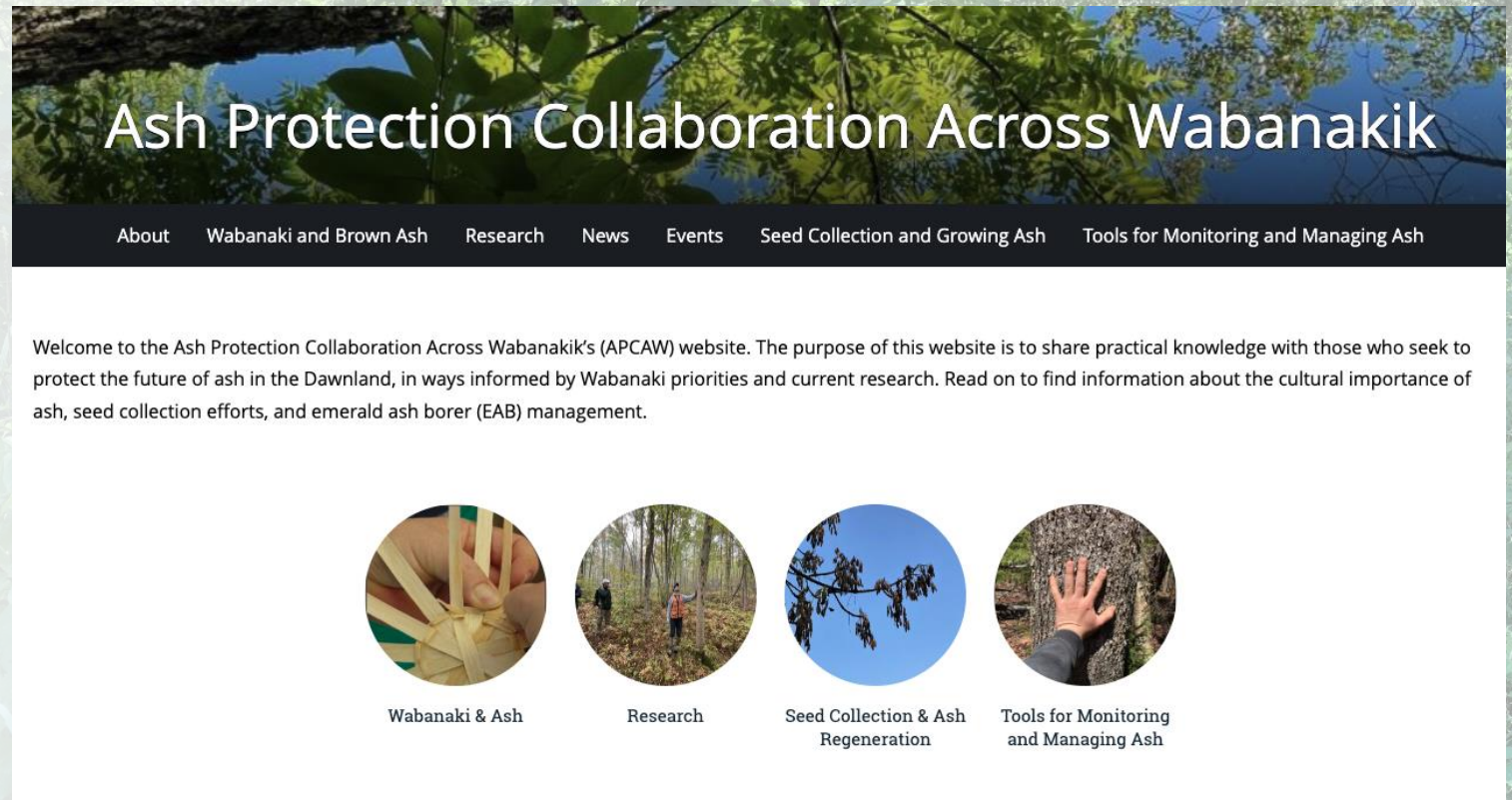
Ash Inventory Training June 2023  
(Maine Land Trust Network)



Ash seed collection training Fall 2023

# APCAW Website Created

Website developed in 2023 through a collaborative process:  
<https://umaine.edu/apcaw/>



# Positive response to APCAW's outreach and education

- Broad participation from conservation groups, land trusts, educators, foresters, state and federal agencies in our trainings
- People appreciate the approach of collaboration and learning from both Native and non-native perspectives



Questions

Responses

425

Settings

Sign up: Introduction to the Ash Protection  
Collaboration Across Wabanakik Training Series

# Did APCAW's outreach and education prepare people to take ash protection actions?

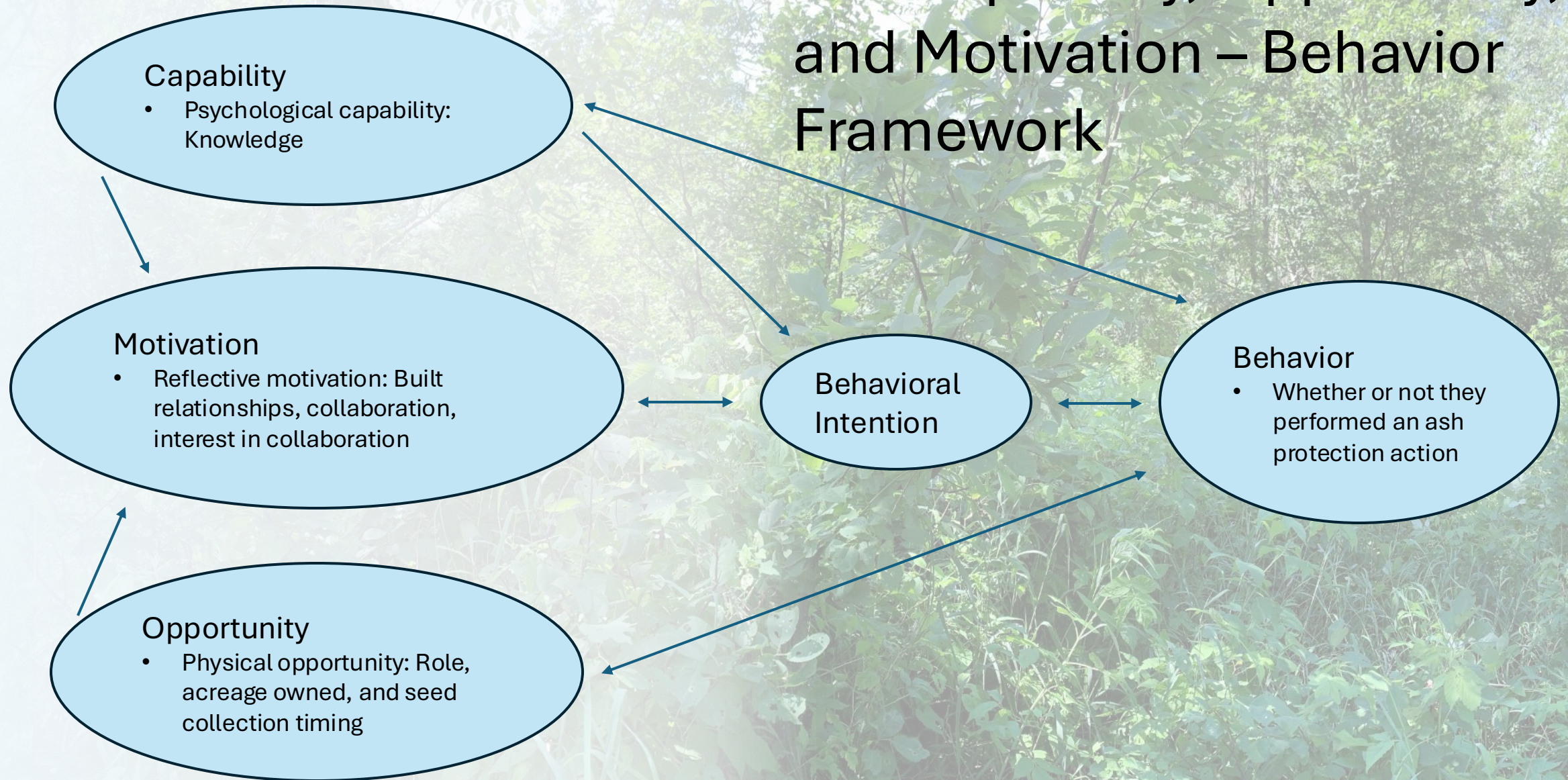
Qualtrics Questionnaire:

- Invited APCAW program registrants (n=914) to participate.
- Received 289 valid responses (32% response rate) in January 2024.

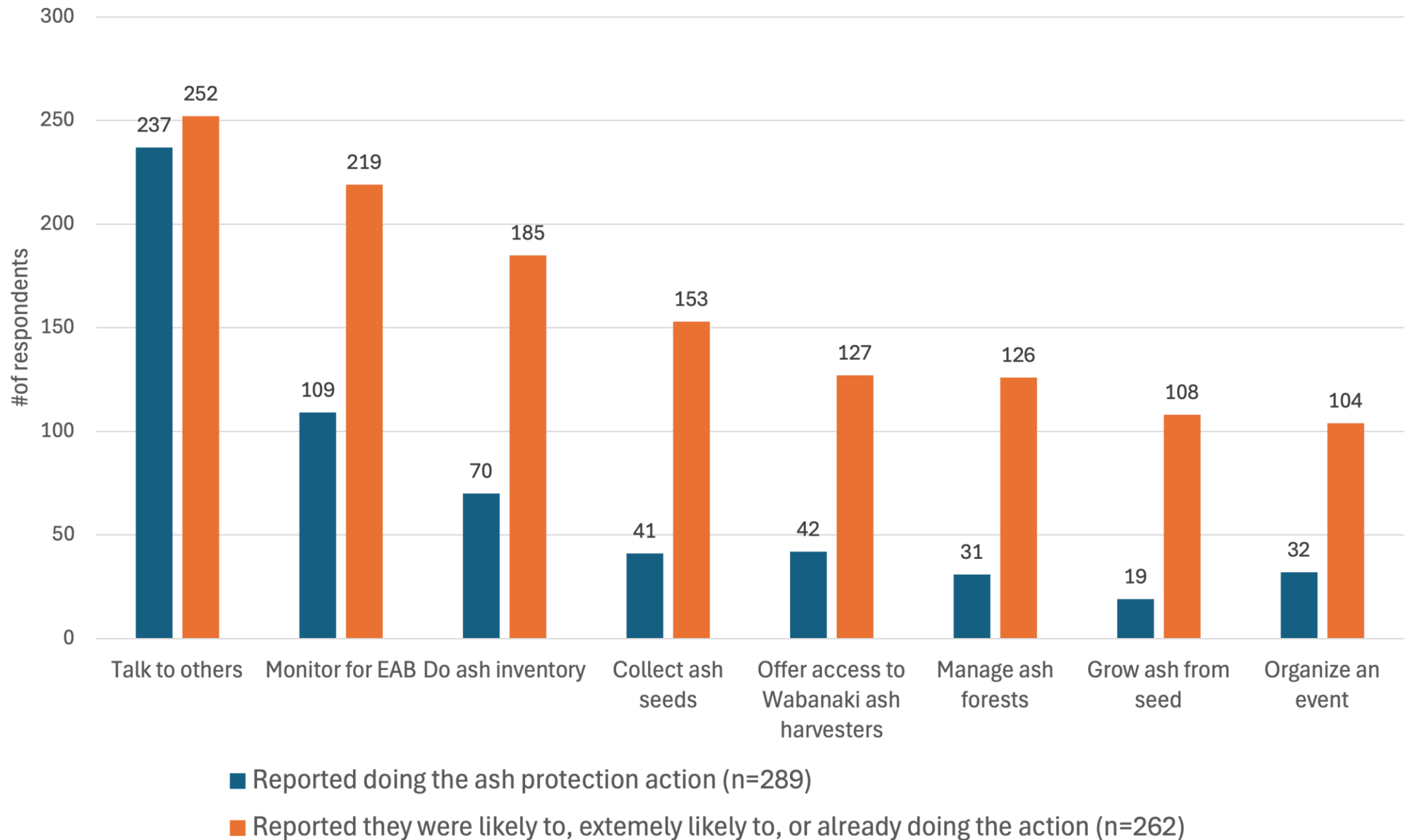
qualtrics<sup>XM</sup>



# The Capability, Opportunity, and Motivation – Behavior Framework



## Behavior vs. intention to take ash protection actions



# Capability increased for program participants:

Significant changes in knowledge observed before/after events in every category for every event

Item	N	M (pre)	SD (pre)	M (post)	SD (post)	$\Delta$ M	SD	SEM	t	P (two sided)
How to recognize differences between brown/black, white, and green ash	113	2.27	1.069	3.35	.596	-1.09	.82	.077	-14	<.001
How to collect stand, plot, and tree level data for ash trees	109	1.85	1.017	2.98	.793	-1.13	.70	.067	-17	<.001
How to identify ash habitat for each species	113	2.13	1.073	3.14	.789	-1.01	.75	.071	-14	<.001
How to monitor for signs and symptoms of EAB	113	2.24	1.071	3.25	.714	-1.01	.74	.069	-15	<.001
Wabanaki data sovereignty	110	1.70	.852	2.90	.766	-1.20	.84	.080	-15	<.001

**Example showing results from the Ash Inventory Webinar**

# Motivation: Built relationships, high potential for collaboration

**72%** of participants in the ash inventory field trip **built relationships** with others (n=40)

**84%** of participants in the seed collection training **built relationships** with others (n=26)

**124 people**, or 47.7% of respondents (n=260), indicated that they have collaborated with others around ash protection.

**84%** of respondents (n=131) indicated they are interested in collaborating with other people around ash protection



# Opportunity varies across program participants

- Limited access to ash stands: Only 90 respondents (n=289) were private landowners with ash on their land (31%)
- 113 respondents (n=289) were affiliated with conservation groups as staff or volunteers (39%)
- 12 were Tribal Nation staff
- Despite APCAW providing necessary tools, 2023 was not a good seed collection year



# Take aways

Knowledge (capacity) alone  $\neq$  Behavior

Continue to increase opportunity by:

- Facilitate access to ash stands for inventory and seed collection
- Providing tools
- Communicate when the time is right to collect seed

Foster motivation by:

- Organizing events for relationship building
- Affect?

# Future brown ash outreach & education

The most preferred method of learning was in person events

Found effective at building capacity (knowledge & skills), and motivation (relationships, collaboration)

APCAW can continue to remove barriers to opportunity like access to ash stands, lack of information about seed availability



# Thank you to our partners!



*+Private  
landowners!*

## Questions?

Ella McDonald  
Master's Student  
Email: [ella.mcdonald@maine.edu](mailto:ella.mcdonald@maine.edu)  
Phone: 413-230-0089

