



Conservation planning for the next generation of forest land management at Smokey House Center

Blanca Begert, Yale School of the Environment

Seth Inman, Yale School of the Environment

Jesse Pyles, Smokey House Center

Smokey House Center | Danby, VT | 802.293.2300 | info@smokeyhouse.org

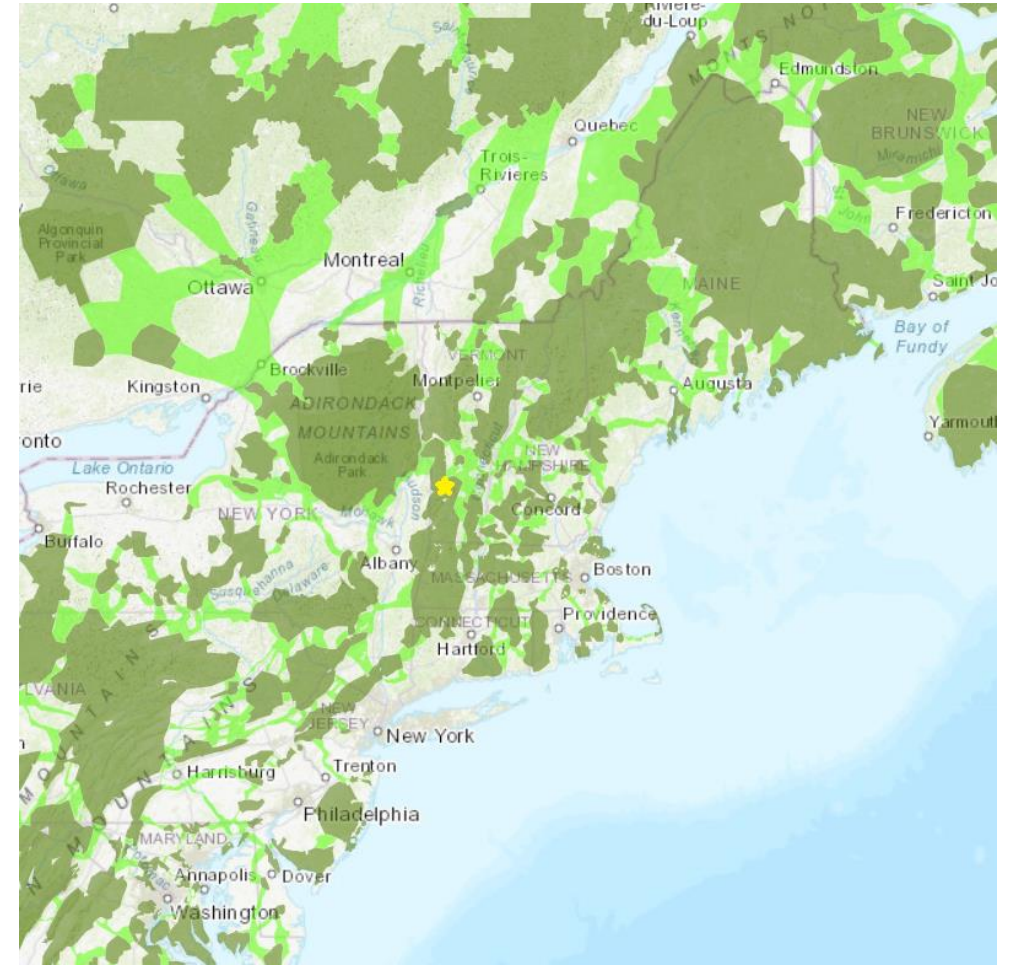


Land. Agriculture. Learning.

Background: Land Management Beginnings

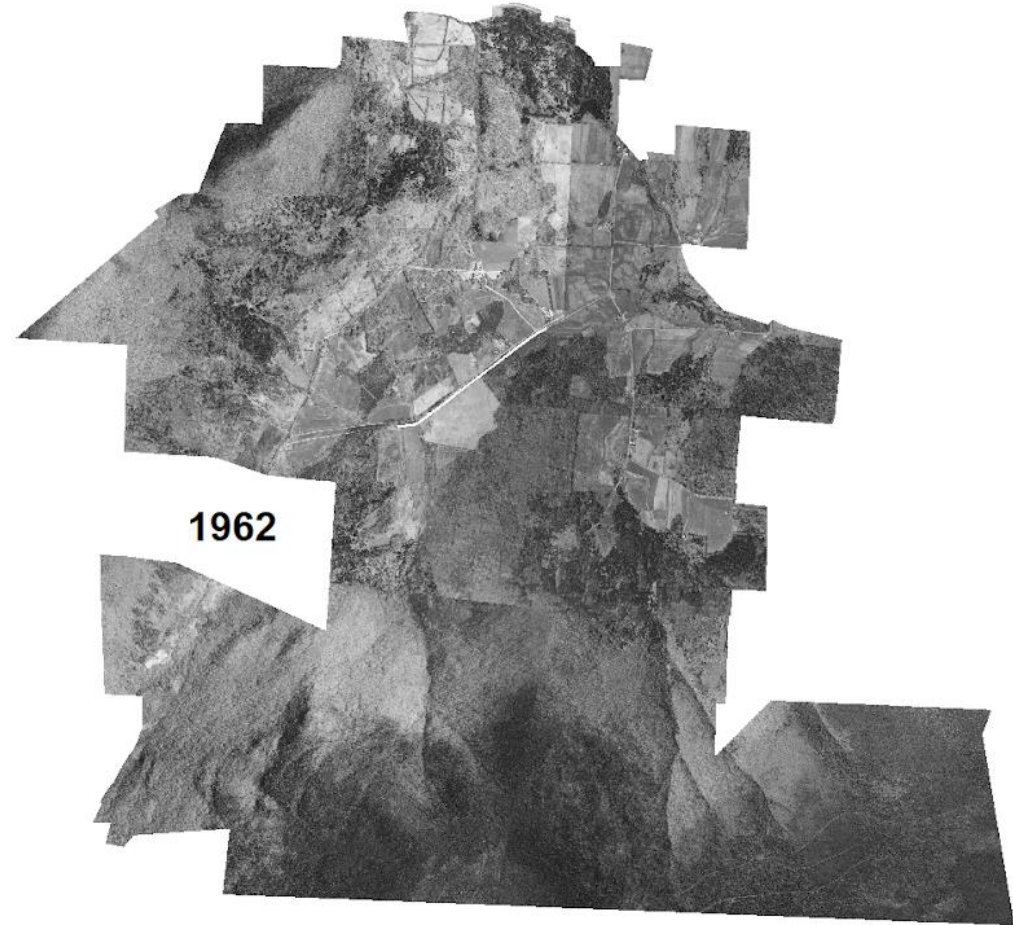
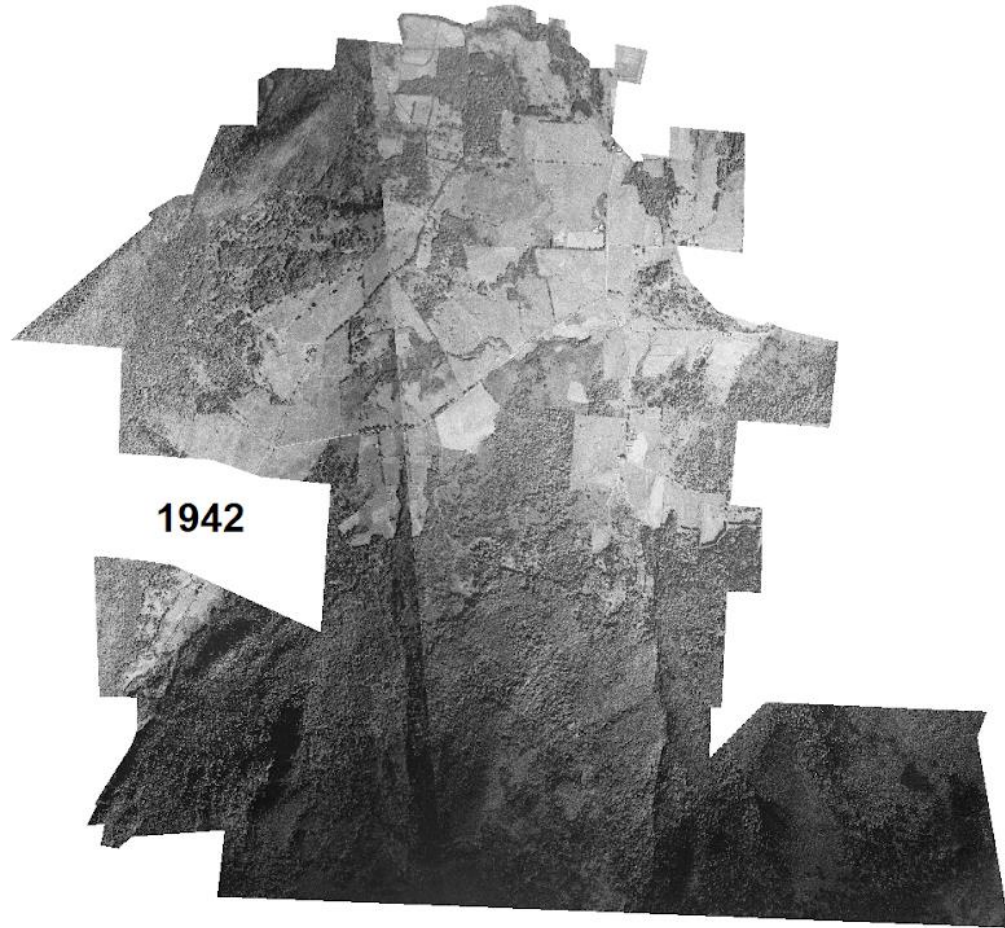


Native Land Digital: Native-Land.ca

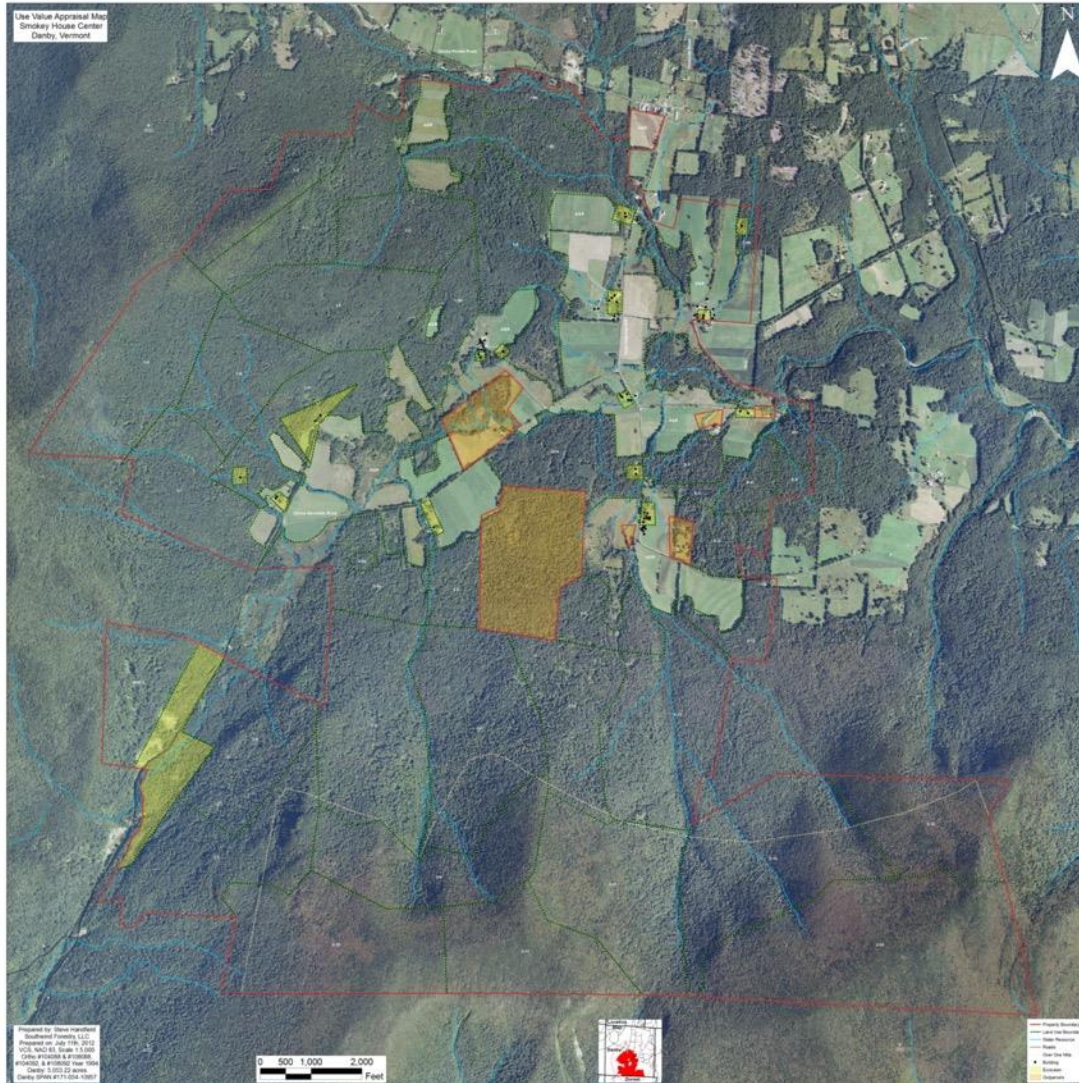


Wildlands Network: Eastern Wildway Connectivity

Background: Land Management Beginnings



Background: Organizational History



2012

- Education mission
- “Sustainable resource management”
- Property tax and Current Use enrollment
- Timber revenue to support non-profit functions
- Farm leases
- Shifting program market
- New Forest Management Plan 2022
- New climate/ecology mandate

Yale Post-graduate Fellowship at Smokey House Center



Identify Goals

- Survey Smokey House personnel
- Understand existing “Forestry Plan”
- Understand new “Conservation Plan” requirements
- Identify Conservation Values

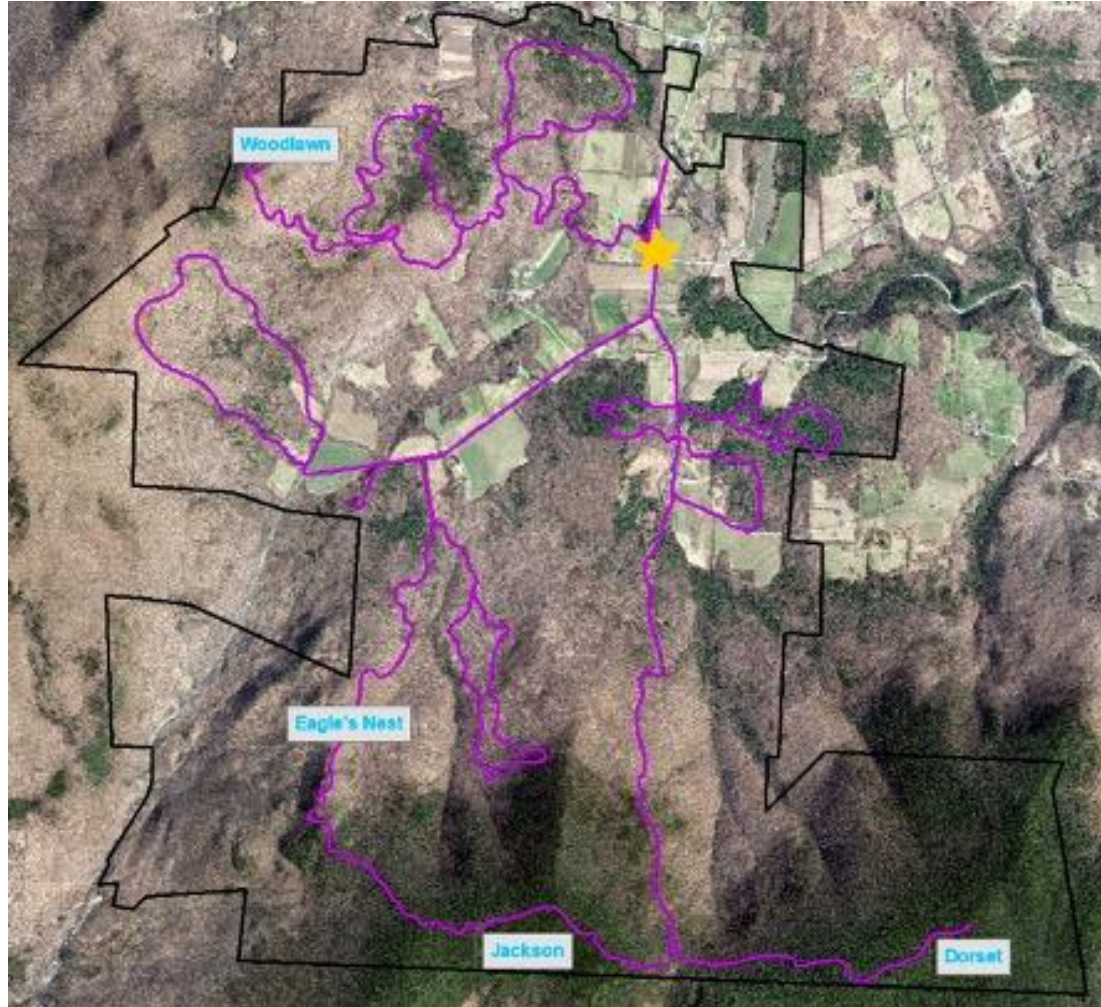


Forestry



Conservation

Groundtruth



- Field days
- Resource contacts
- Historical records
- Cross-reference data sets
 - ANR Atlas
 - BioFinder
 - Vermont Center for Ecostudies
 - TNC Resiliency maps
 - others

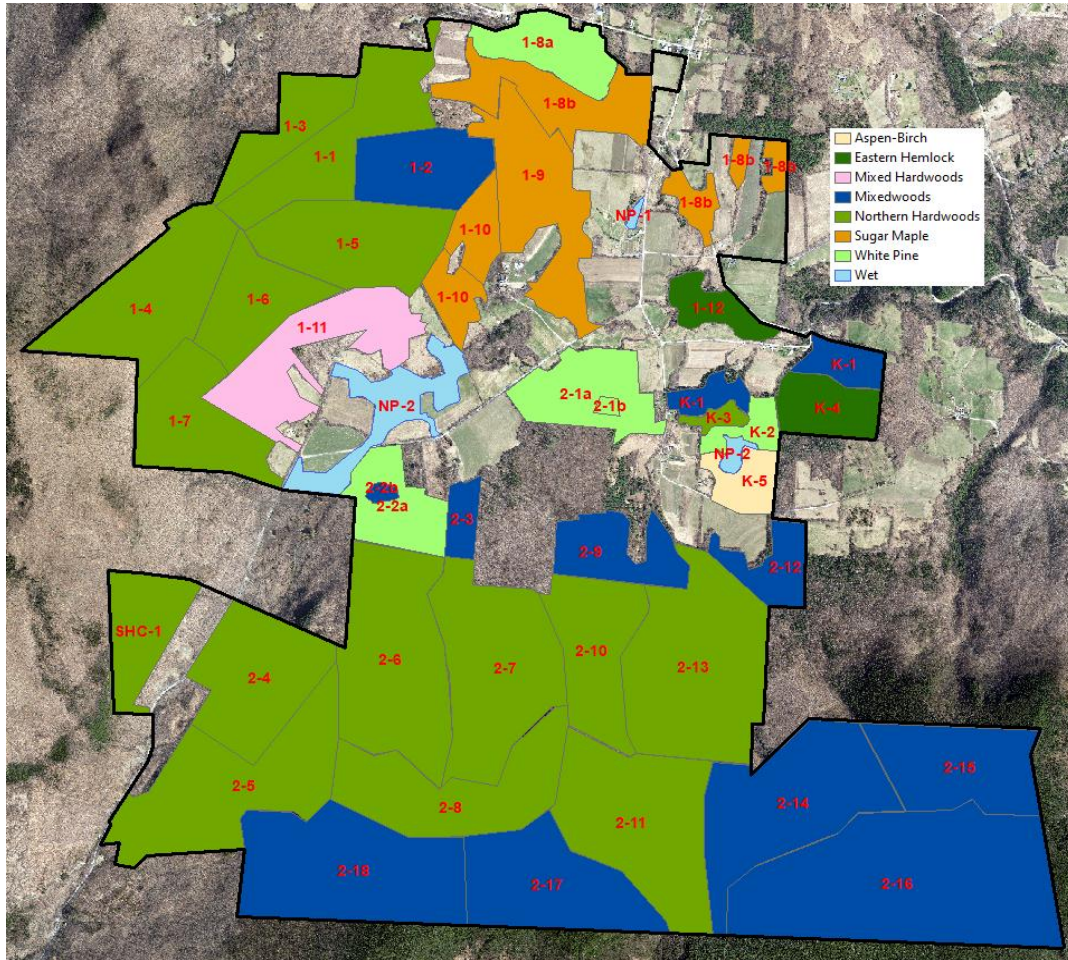
Natural Communities

- Identify and document interesting flora and fauna
- Mining old maps and files for historical land use
- New mapping based on “Natural Communities” to emphasize Conservation Values

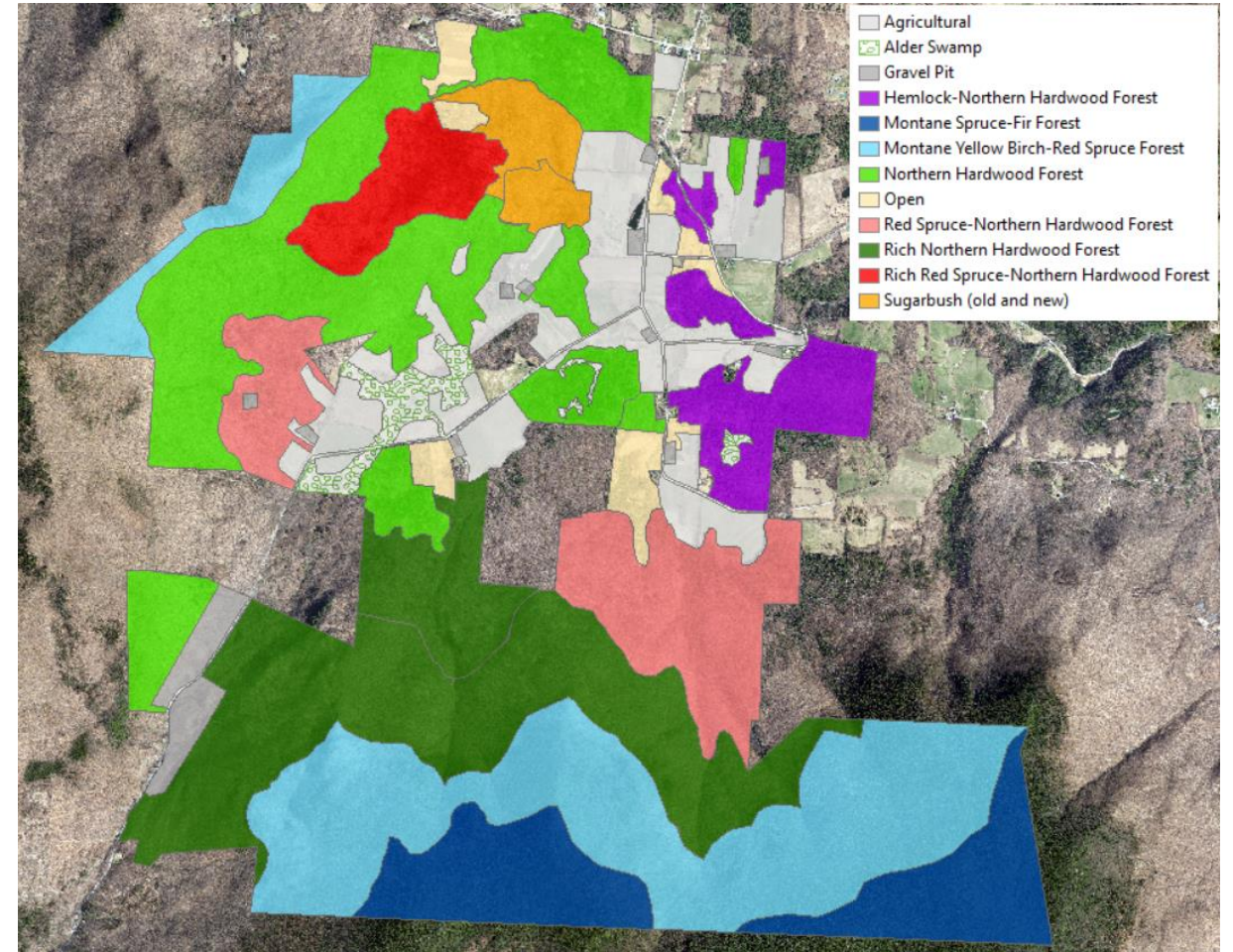
** Wetland, Woodland, Wildland: A Guide to the Natural Communities of Vermont*



The Maps



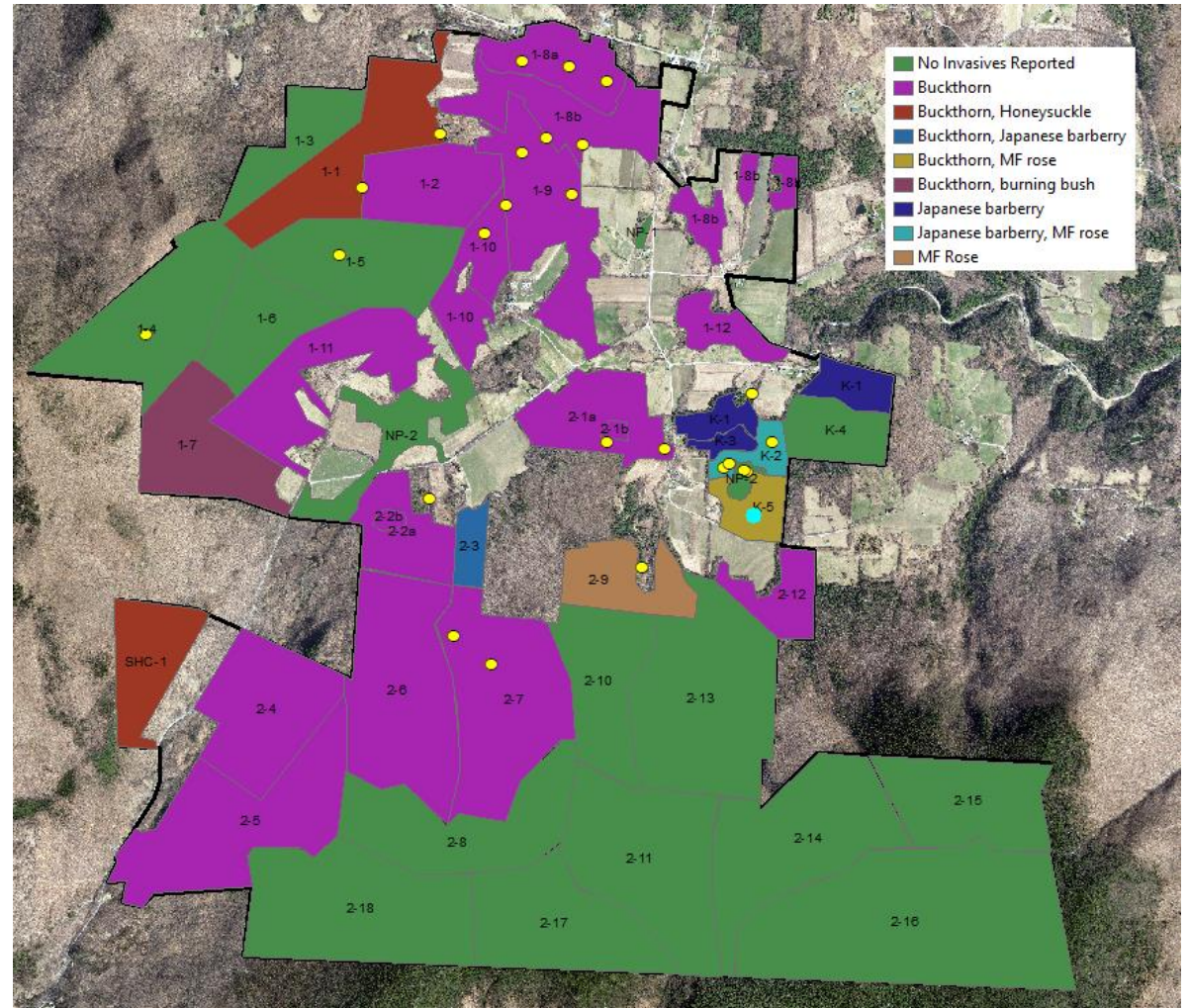
Stands



Natural Communities

The Plan

- Drafting the plan
- Conservation Values
 - Protect and promote wildlife habitat
 - Promote forest health, vigor, and resilience
 - Conserve plant species of concern
 - Protect soils and high-elevation areas
- Active and non-active management
- Subdividing “Natural Communities”
- Review



invasives management

Looking Ahead

- Plan submission
- Tax implications
- Future land management
 - Conservation values
 - “rewilding” and active management
- Education
 - Monitoring
 - Research
 - Outreach
- Intentions matter





Conservation planning for the next generation of forest land management at Smokey House Center

Blanca Begert, Yale School of the Environment

Seth Inman, Yale School of the Environment

Jesse Pyles, Smokey House Center

Smokey House Center | Danby, VT | 802.293.2300 | info@smokeyhouse.org